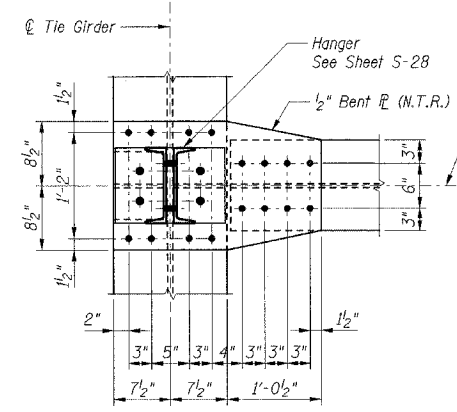
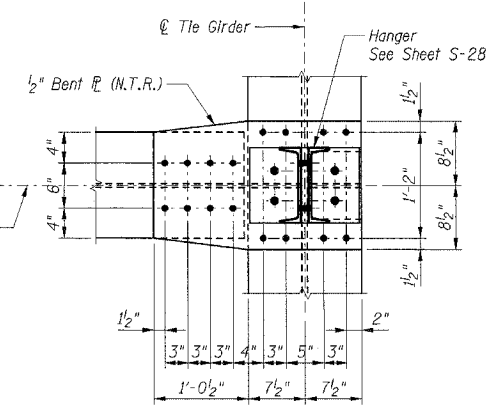


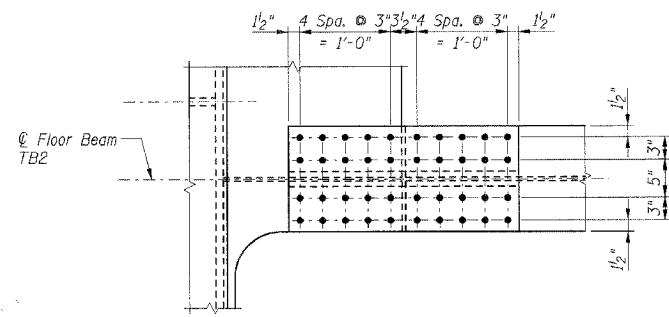
FAU RTE	SECTION	COUNTY	TOTAL SHEETS	SHEET NO.
7000	02-00212-00-BR	VERMILION	59	39
FROM STA. 96+00.00		TO STA. 103+10.10		
FED. ROAD DIST. NO.	ILLINOIS	FED. AID PROJECT		
CONTRACT NO. 91285				



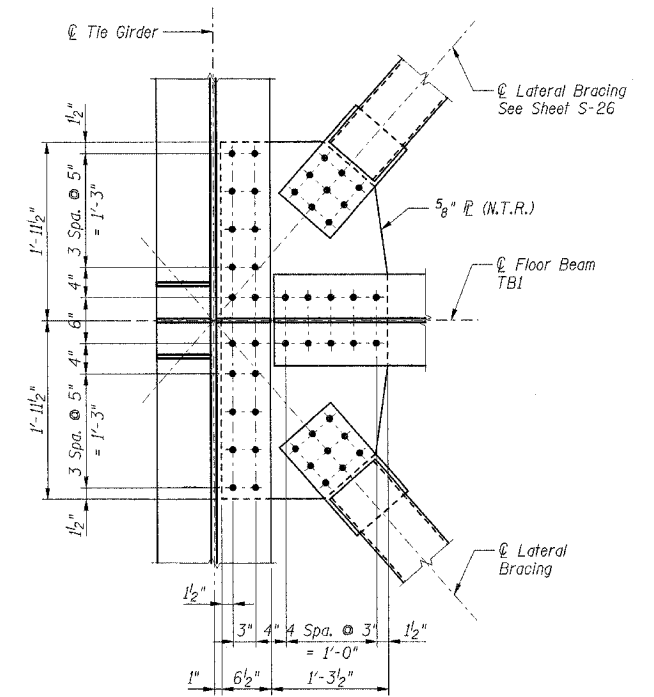
SECTION A-A



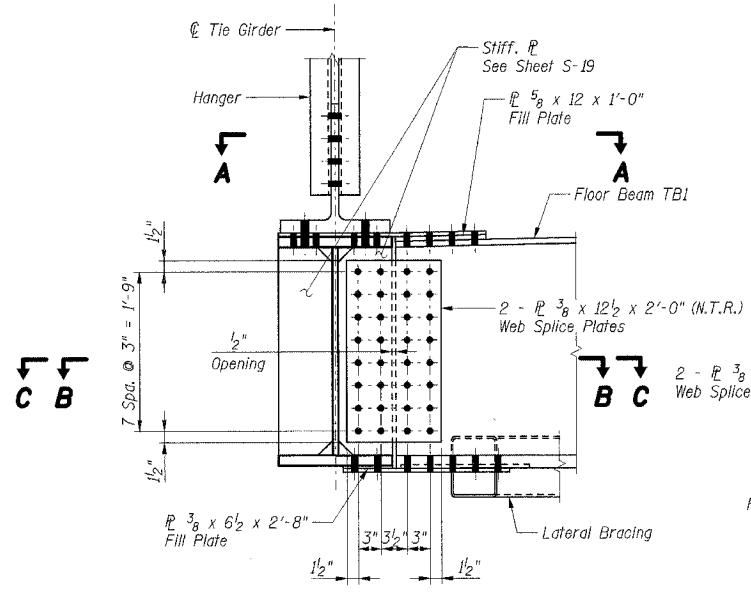
SECTION F-F



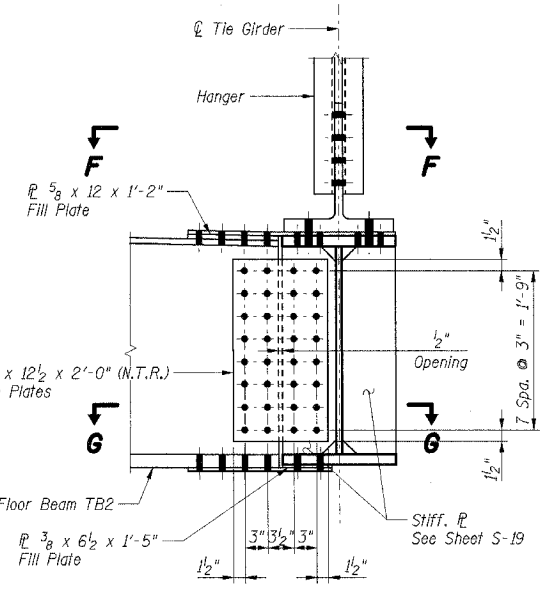
SECTION D-D



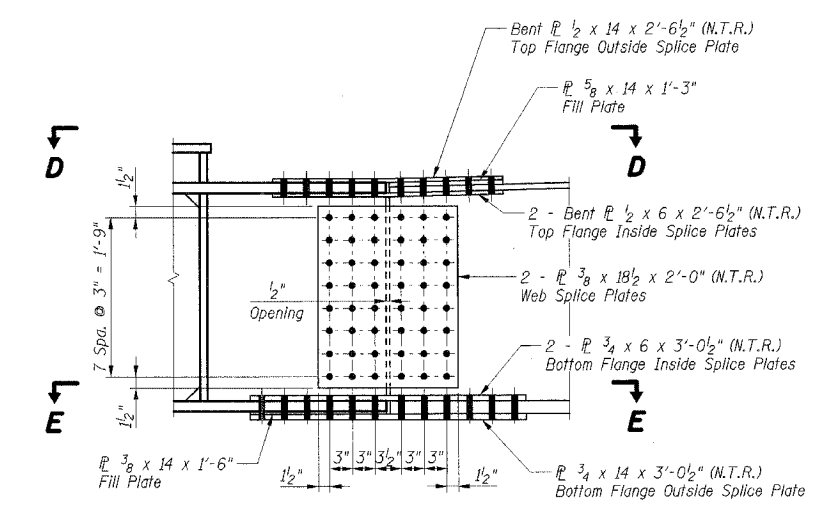
SECTION C-C



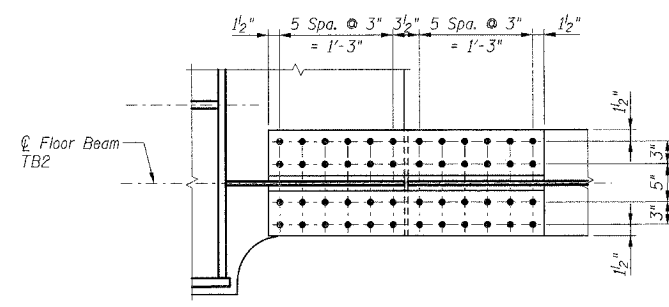
DETAIL '6'



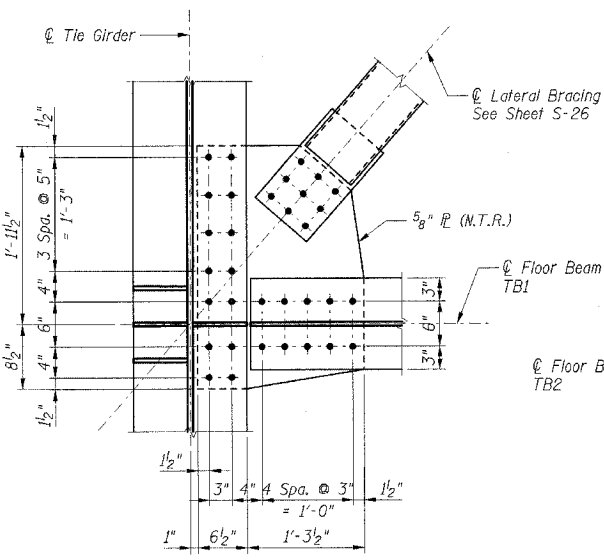
DETAIL '9'



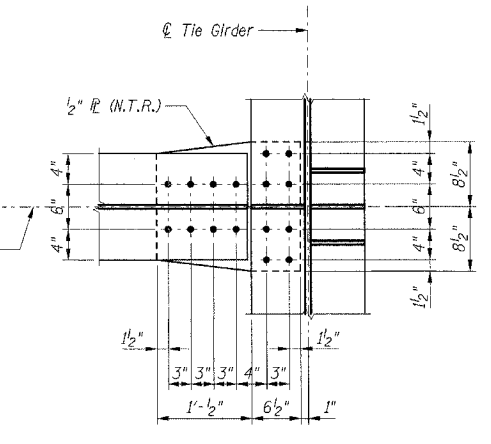
DETAIL '7'



SECTION E-E



SECTION B-B



SECTION G-G

- Notes:**
- All structural steel shall be AASHTO M 270 Grade 50W.
 - N.T.R. denotes steel that shall conform to the Supplemental Requirements for Notch Toughness (Zone 2).
 - Fasteners for floor beam connections shall be T_8 ϕ AASHTO M 164, Type 3 high-strength bolts in $15/16$ ϕ holes.

SHT. S-24 OF 40

REVISIONS	
NAME	DATE

CITY OF DANVILLE, ILLINOIS
HUNGRY HOLLOW ROAD BRIDGE

**TRANSVERSE FLOOR BEAM
CONNECTION DETAILS**

SCALE: _____ DRAWN BY: CCE
DATE: 12/06/05 CHECKED BY: JRH

TENG

TENG & ASSOCIATES, INC.
ENGINEERS ARCHITECTS PLANNERS
300 N. MICHIGAN AVE. CHICAGO, IL 60610
TELEPHONE 312.961.0100

R055FF
 I:\T\B00079.DWG - BIMECO\PRJ.DWG
 S:\DOCUMENT\02336902\STRUCT\DRGN\BMD00R.PRP.DGN
 12-07-2005, 13:12:40