

FAU RTE	SECTION	COUNTY	TOTAL SHEETS	SHEET NO.
7000	02-00212-00-BR	VERMILION	59	48
FROM STA. 96+00.00		TO STA. 103+10.10		
FED. ROAD DIST. NO.		ILLINOIS FED. AID PROJECT		

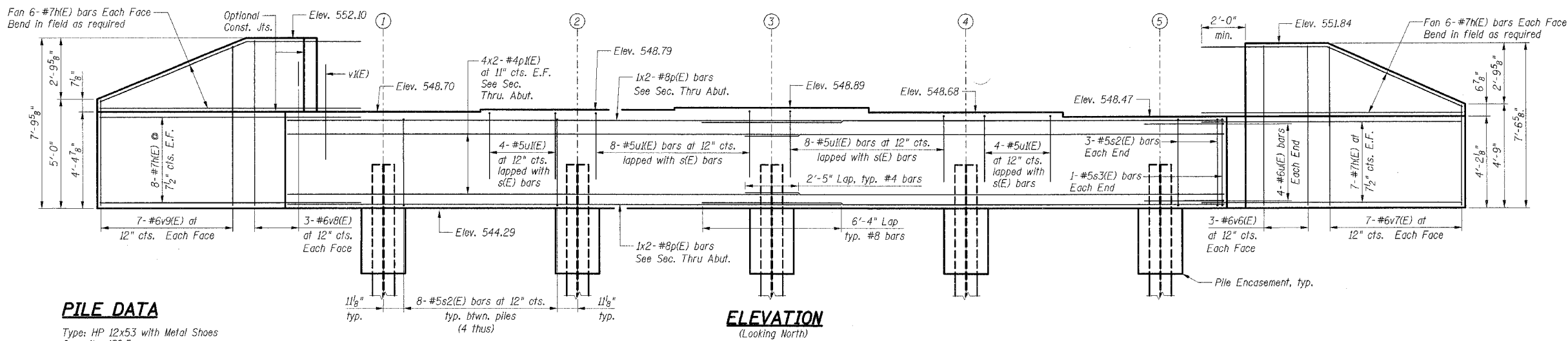
CONTRACT NO. 91285

BAR LIST

Bar	No.	Size	Length	Shape
N(E)	54	#7	12'-6"	—
p(E)	8	#8	25'-3"	—
p1(E)	16	#4	23'-4"	—
s2(E)	38	#5	13'-4"	□
s3(E)	2	#5	14'-0"	□
u(E)	8	#6	9'-7"	∟
u1(E)	24	#5	8'-2"	∟
v1(E)	87	#6	4'-4"	—
v6(E)	6	#6	7'-4"	—
v7(E)	7	#6	11'-10"	—
v8(E)	6	#6	7'-7"	—
v9(E)	7	#6	12'-2"	—

BILL OF MATERIAL

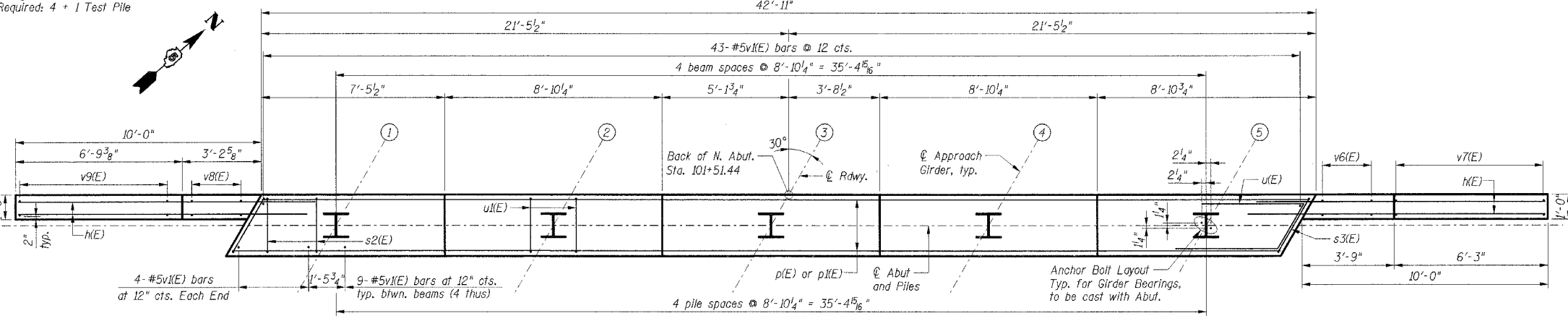
Item	Unit	Total
Porous Granular Embankment (Special)	Cu Yd	89
Structure Excavation	Cu Yd	129
Concrete Structures	Cu Yd	26
Reinforcement Bars, Epoxy Coated	Lbs	4,000
Geocomposite Wall Drain	Sq Yd	47
Pipe Underdrains for Structures	Ft	82



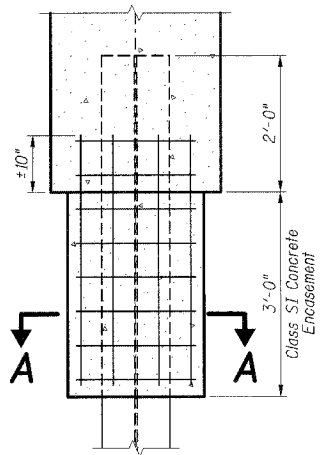
ELEVATION
(Looking North)

PILE DATA

Type: HP 12x53 with Metal Shoes
Capacity: 139.5
Est. Length: 25 ft
No. Required: 4 * 1 Test Pile



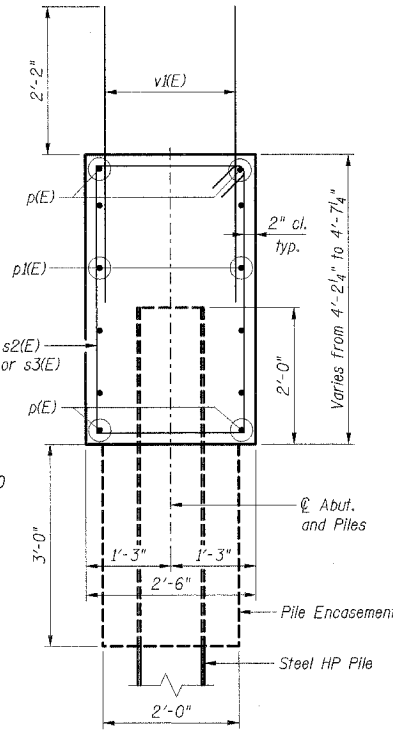
TOP PLAN



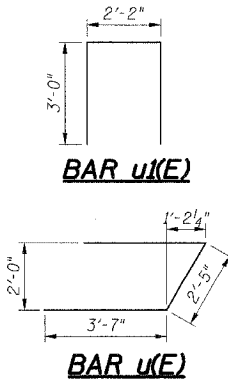
SECTION A-A

PILE ENCASEMENT

Welded wire fabric 6x6-W4.0xW4.0 weighing 58#/100 sq. ft. The cost of Excavation, Concrete Encasement and Reinforcement is included with furnishing piles. Forms for encasement may be omitted when soil conditions will permit.

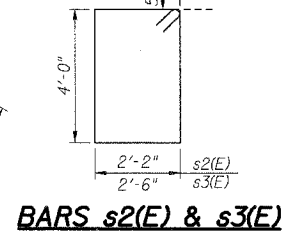


TYPICAL ABUTMENT SECTION
(Showing Geometry and Reinforcement)



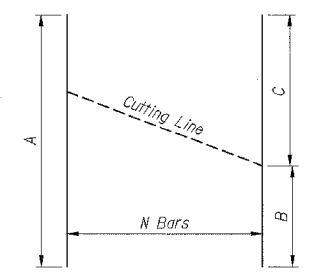
BAR u1(E)

BAR u(E)



BARS s2(E) & s3(E)

Bar	N	A	B	C
v7(E)	7	11'-10"	4'-7"	7'-3"
v9(E)	7	12'-2"	4'-10"	7'-4"



CUTTING DIAGRAM

Order v7(E) & v9(E) bars full length. Cut as shown and use remainder in opposite face.

- Notes:**
- Four steps monolithically with cap.
 - Reinforcement bars designated (E) shall be epoxy coated.
 - For drainage details behind abutment, see Sht. S-32.
 - Bars indicated thus 20x3-#5 etc. indicates 20 lines of bars with 3 lengths per line.
 - For anchor bolt details see Sheet S-31.

SHT. S-33 OF 40

REVISIONS	
NAME	DATE

CITY OF DANVILLE, ILLINOIS
HUNGRY HOLLOW ROAD BRIDGE
NORTH ABUTMENT
PLAN, ELEVATION & SECTION

SCALE: DRAWN BY LAR
DATE 12/06/05 CHECKED BY JRH



ROSSFF

\\TTP00078.DGN \PART\TOP\POXY.DGN SA\DOCUMENT\02136902\STRUCT\DRGN\ABT\TOP\POXY.DGN 12-07-2005 13:42:32