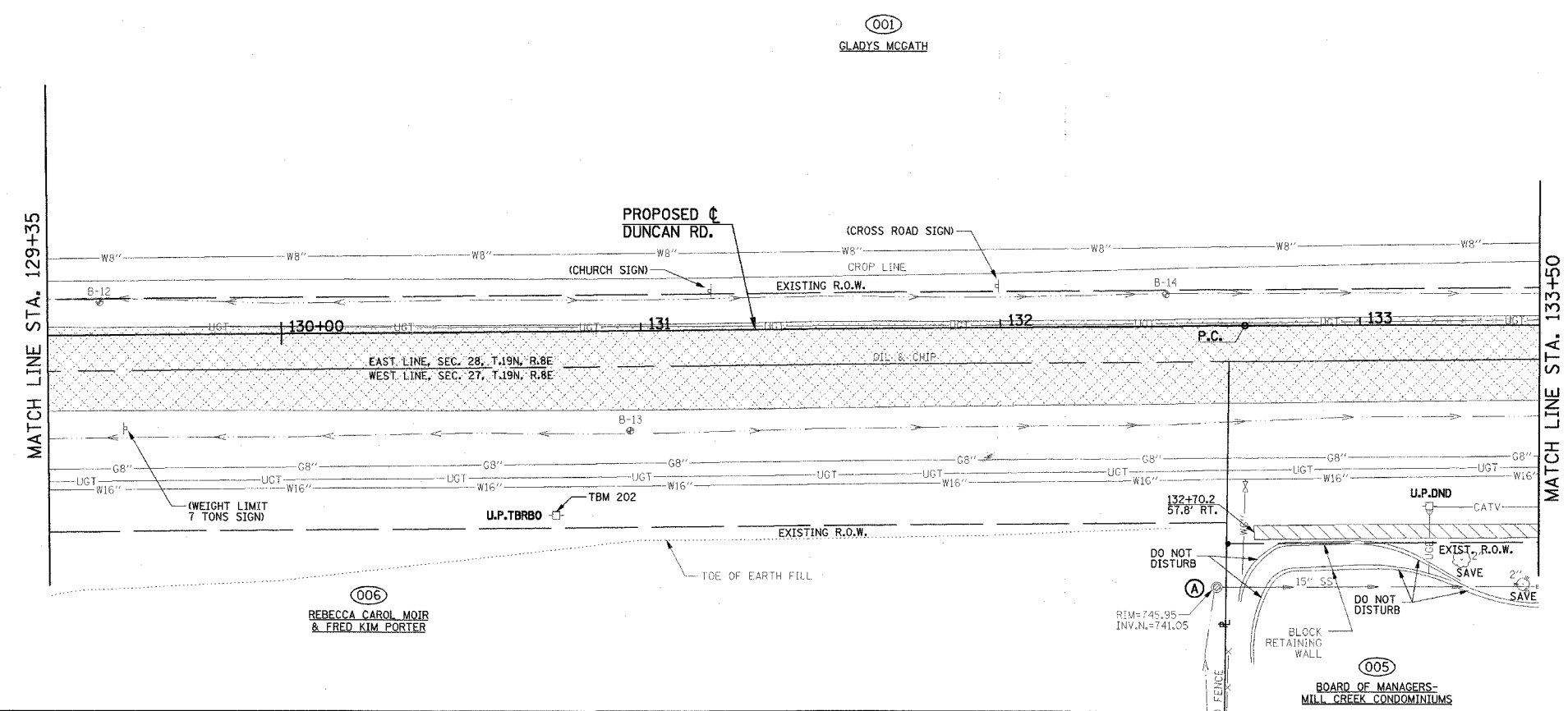
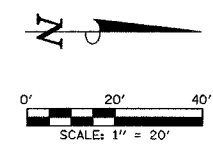


F.A.U. RT. 1	SECTION	COUNTY	TOTAL SHEETS	SHEET NO.
807	00-00374-00-PV	CHAMPAIGN	149	28
STA. 129+35		TO STA. 138+00		
FED. ROAD DIST. NO. 7		ILLINOIS	F.A. PROJECT M-5181(38)	

CONTRACT NO. 91308



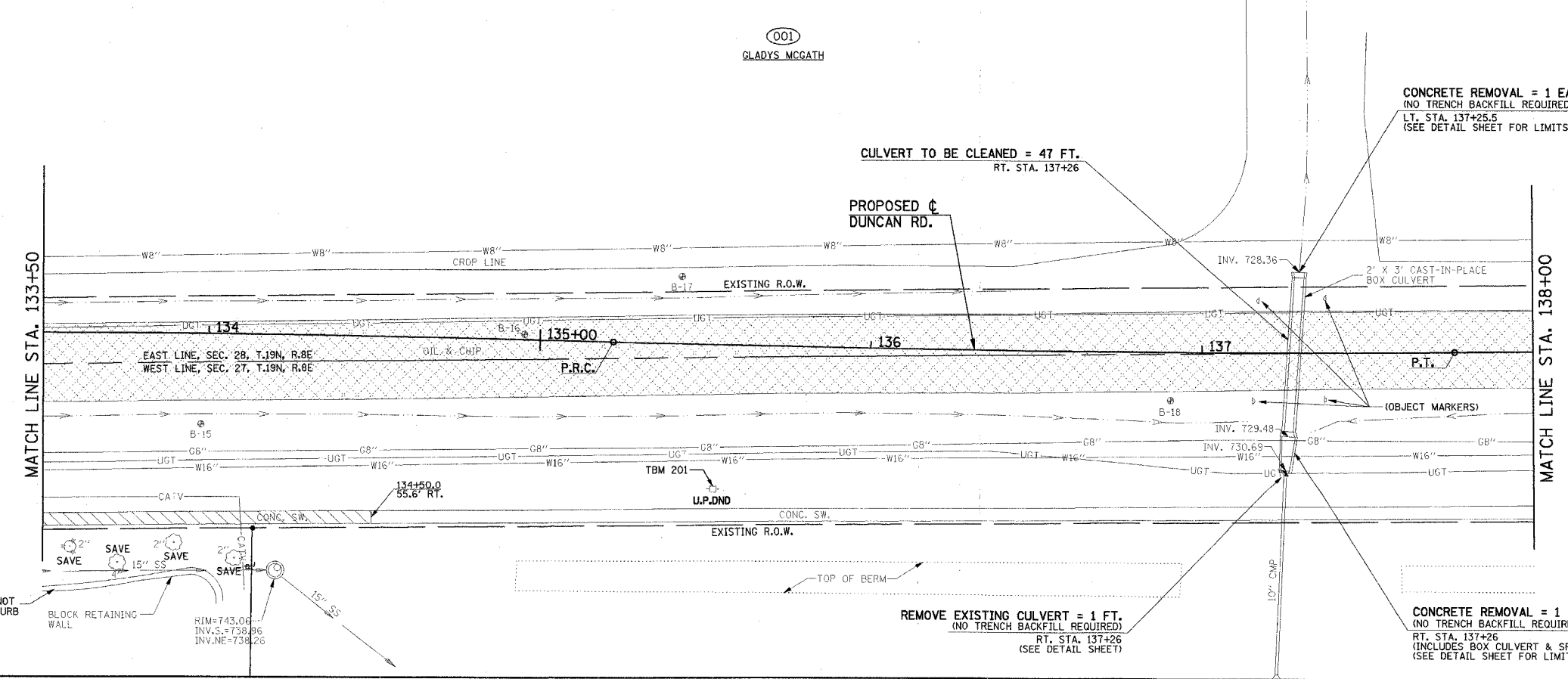
MAILBOXES SHALL BE TEMPORARILY RELOCATED AS DIRECTED BY THE ENGINEER IN ACCORDANCE WITH THE SPECIAL PROVISIONS.

SEE PLAN AND PROFILE SHEETS FOR STORM SEWER REMOVAL AND STRUCTURE REMOVAL AND ADJUSTMENT SCHEDULES.

ALL VARIOUS SIGNS WHICH INTERFERE WITH CONSTRUCTION OPERATIONS SHALL BE REMOVED AND RELOCATED AS DIRECTED BY THE ENGINEER. SEE SPECIAL PROVISIONS.

LEGEND

- (A) STRUCTURE TO BE ADJUSTED
- (R) STRUCTURE TO BE REMOVED
- (F) STRUCTURE TO BE FILLED
- (TM) TELEPHONE MANHOLE TO BE ADJUSTED BY OTHERS
- U.P.TBRBO UTILITY POLE - TO BE RELOCATED BY OTHERS
- U.P.DND UTILITY POLE - DO NOT DISTURB
- 15" TREE REMOVAL
- DRIVEWAY PAVEMENT REMOVAL
- PAVEMENT REMOVAL
- SIDEWALK REMOVAL
- CULVERT TO BE REMOVED



CONCRETE REMOVAL = 1 EACH
(NO TRENCH BACKFILL REQUIRED)
LT. STA. 137+25.5
(SEE DETAIL SHEET FOR LIMITS)

CULVERT TO BE CLEANED = 47 FT.
RT. STA. 137+26

PROPOSED DUNCAN RD.

REMOVE EXISTING CULVERT = 1 FT.
(NO TRENCH BACKFILL REQUIRED)
RT. STA. 137+26
(SEE DETAIL SHEET)

CONCRETE REMOVAL = 1 EACH
(NO TRENCH BACKFILL REQUIRED)
RT. STA. 137+26
(INCLUDES BOX CULVERT & SPLASH PAD)
(SEE DETAIL SHEET FOR LIMITS)

PAVING REMOVAL SCHEDULE

LOCATION	PAVEMENT REM (SQ YD)	DRIVE PAVEMENT REM (SQ YD)	SIDEWALK REM (SQ FT)
129+35.0 C. TO 133+50.0 C.	1,094.6		
132+70.2 RT. TO 133+50 RT.			310.8
133+50.0 C. TO 138+00.0 C.	1,189.3		
133+50 RT. TO 134+50 RT.			390.6

NOTE:
THE PAVEMENT REMOVAL AND/OR DRIVEWAY PAVEMENT REMOVAL SHALL INCLUDE ANY CURBS THAT HAVE BEEN CONSTRUCTED MONOLITHIC WITH THE PAVEMENT. THE COST OF REMOVING THE CURBS SHALL BE INCLUDED IN THE CONTRACT UNIT PRICE FOR "PAVEMENT REMOVAL" AND/OR "DRIVEWAY PAVEMENT REMOVAL".

ILLINOIS DEPARTMENT OF TRANSPORTATION

REMOVALS/RELOCATIONS PLAN

DATE: 8-05
DRAWN BY: S.M.W.
CHECKED BY: R.L.H.

SCALE: 1"=20'