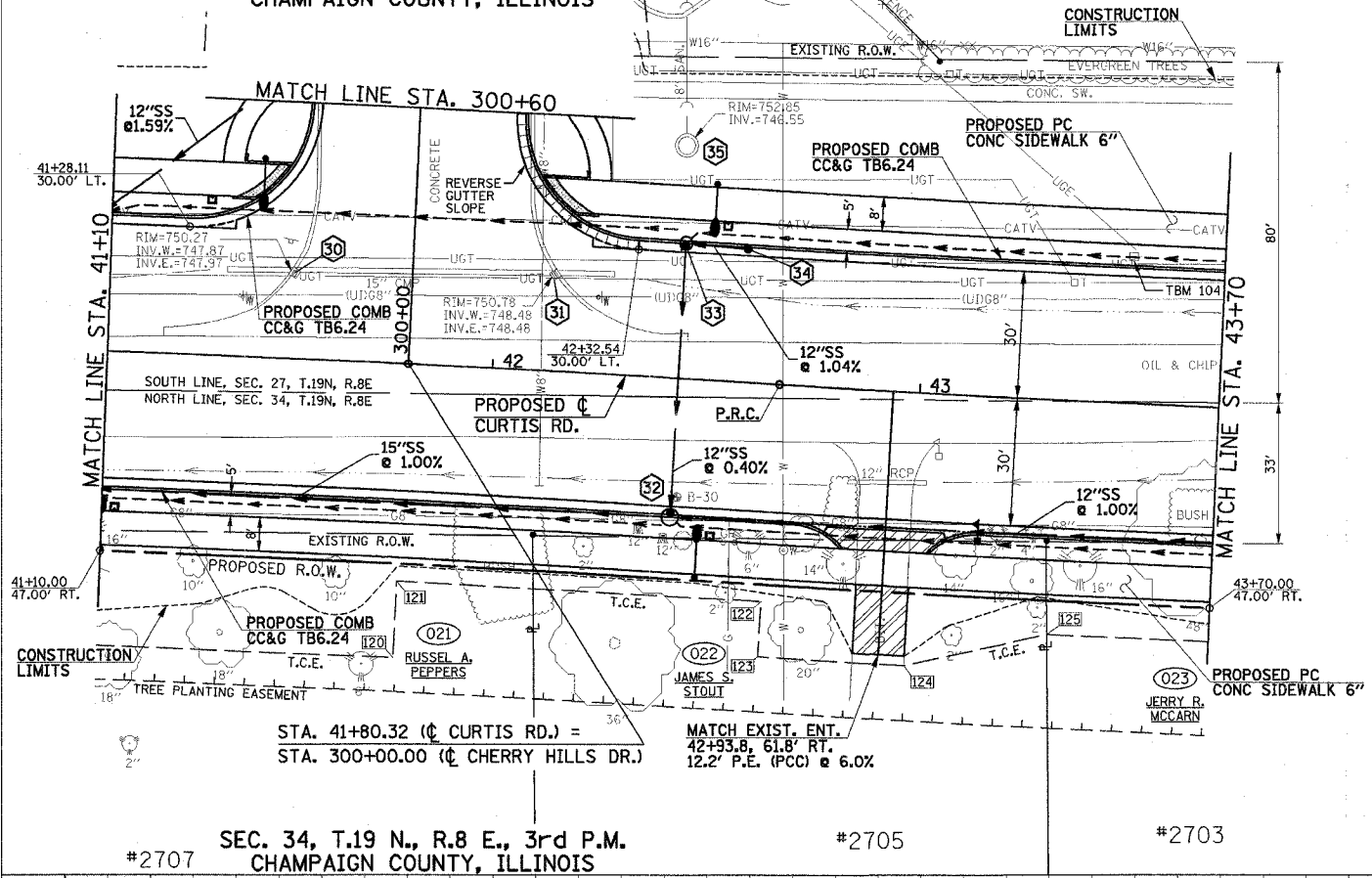


SEC. 27, T.19 N., R.8 E., 3rd P.M.  
CHAMPAIGN COUNTY, ILLINOIS

F.A.U. RTE.	SECTION	COUNTY	TOTAL SHEETS	SHEET NO.
807	00-00374-00-PV	CHAMPAIGN	149	34
STA. 41+10 TO STA. 43+70				
FED. ROAD DIST. NO. 7 ILLINOIS			F.A. PROJECT M-5181(38)	
CONTRACT NO. 91308				



PROP. CURVE CHRHYL-1  
PI STA. = 301+63.14  
Δ = 12° 05' 12" (LT)  
D = 7° 32' 20"  
R = 760.00'  
T = 80.46'  
L = 160.32'  
E = 4.25'  
P.C. STA = 300+82.68  
P.T. STA = 302+43.00  
S.E. = NONE

15' TRANSITION (TYP) FROM COMB C&G TB6.24 TO EXISTING GUTTER TYPE

PROPOSED PC CONC SIDEWALK 6"

PROPOSED COMB CC&G TB6.24

PROPOSED COMB CC&G TB6.12

CONSTRUCTION LIMITS

PROPOSED PC CONC SIDEWALK 6"

PROPOSED COMB CC&G TB6.24

PROPOSED COMB CC&G TB6.12

REVERSE GUTTER SLOPE

12" SS WMO @ 2.48%

12" SS WMO @ 1.16%

CONSTRUCTION LIMITS

PROPOSED PC CONC SIDEWALK 6"

6" CONC. CURB POURED MONOLITHIC WITH PAVEMENT

PROPOSED COMB CC&G TB6.24

REVERSE GUTTER SLOPE

12" SS WMO @ 2.19%

12" SS WMO @ 1.77%

SEE INTERSECTION DETAILS FOR ADDITIONAL INFORMATION.

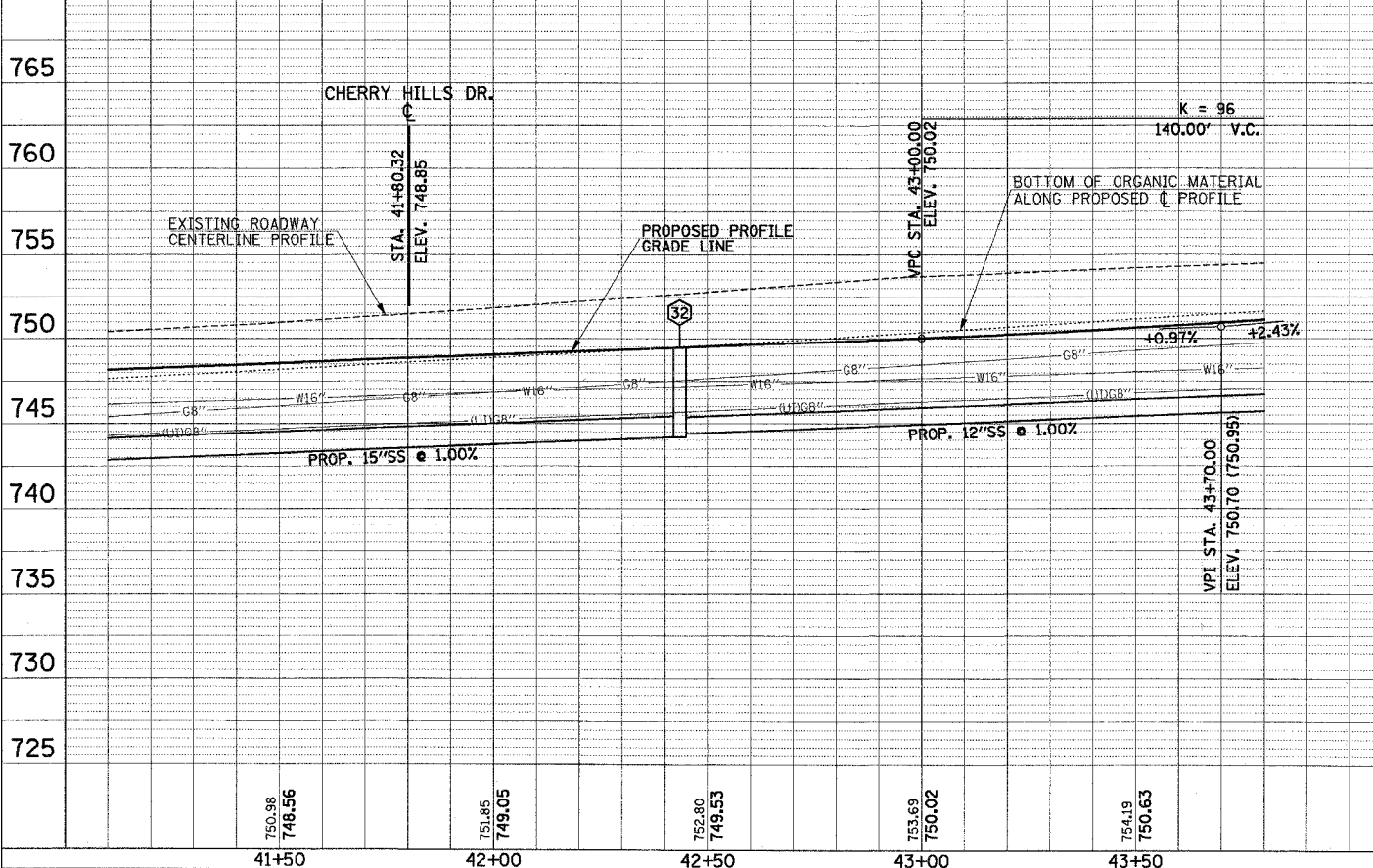
SEE SCHEDULE OF QUANTITIES FOR TYPICAL SECTION PAVEMENT PAY ITEMS AND THEIR LOCATIONS.

- LEGEND**
- PROPOSED PCC DRIVEWAY PAVEMENT (SEE DETAIL)
  - PROPOSED SIDEWALK RAMP (SEE DETAIL)
  - REVERSE GUTTER SLOPE, -2%
  - PIPE UNDERDRAINS 6"

**TEMPORARY CONSTRUCTION EASEMENT STATIONS AND OFFSETS**

POINT	STATION	LOCATION
I20	41+80.00	69.00' RT.
I21	41+80.00	51.00' RT.
I22	42+66.00	51.00' RT.
I23	42+66.00	64.00' RT.
I24	43+00.00	64.00' RT.
I25	43+32.59	55.00' RT.
S00	300+71.10	51.00' LT.
S01	302+03.00	42.00' LT.
S02	302+03.00	36.10' LT.
S03	300+74.96	53.00' RT.
S04	302+03.00	43.00' RT.
S05	302+03.00	35.90' RT.

SEC. 34, T.19 N., R.8 E., 3rd P.M.  
CHAMPAIGN COUNTY, ILLINOIS



**STORM SEWER STRUCTURE SCHEDULE**

STR. NO.	STRUCTURE TYPE	OFF-SET SIDE	STA. OF C/L 2 FT. OPENING	OFFSET OF C/L 2 FT. OPENING	STA. OF C/L STR.	OFFSET OF C/L STR.	EX. T/O FRAME/GRATE ELEV.	PR. T/O FRAME/GRATE ELEV.	PR. T/O FLAT SLAB TOP ELEV.	INVERT IN ELEV.	U.S. STR. NO.	INVERT OUT ELEV.	D.S. STR. NO.
25	RD MAN 4 DIA T3V F&G	LT	300+70.78	24.50	300+70.78	25.50	---	748.79	747.79	745.24	27	745.24	24
26	INLETS TA T3V F&G	LT	---	---	300+85.00	24.50	---	748.08	---	---	---	745.53	25
27	RD INLETS TB T3V F&G	RT	300+70.78	24.50	300+70.78	25.00	---	749.09	748.09	745.78	28	745.78	25
28	RD INLETS TB T3V F&G	RT	300+85.00	24.50	300+85.00	25.00	---	749.29	748.29	745.98	29	745.98	27
29	INLETS TA T3V F&G	RT	---	---	301+26.00	24.50	---	750.16	---	---	---	746.85	28
30	REMOVE INLET	LT	---	---	41+52.9	20.2	750.27	---	---	---	---	747.87	---
31	REMOVE INLET	LT	---	---	42+13.6	22.8	750.78	---	---	747.97	---	748.48	---
32	RD MAN 4 DIA T3V F&G	RT	42+43.48	31.80	42+43.48	32.80	---	748.93	747.93	744.38	36	744.18	23
33	RD INLETS TB T3V F&G	LT	42+43.48	31.80	42+43.48	32.30	---	748.93	747.93	745.62	34	745.62	32
34	INLETS TA T3V F&G	LT	---	---	42+58.00	31.80	---	749.07	---	---	---	745.76	33
35	SAN MAN RECONST	LT	---	---	42+42.4	54.8	752.85	751.24	---	---	---	746.55	---

UD = INVERT OF 6" UNDERDRAIN

**STORM SEWER PIPE SCHEDULE**

LOCATION STR. - STR. OR STA., O.S.	STORM SEW (FOOT)	STORM SEW (FOOT)	STORM SEW (FOOT)	SS1 WMO 12 (FOOT)	GRADE %	TRENCH BACKFILL (SPECIAL) (CU YD)
24 - 25	60				1.59	11.2
25 - 26				12	2.48	0.7
25 - 27				47	1.16	4.6
27 - 28				12	1.77	1.0
28 - 29				40	2.19	3.4
23 - 32		133			1.00	31.5
32 - 33	62				0.40	9.3
33 - 34	12				1.04	1.0
32 - 36		181			1.00	7.6

TBM 104 - 6" GEAR HEAD SPIKE, SOUTH SIDE OF POWER POLE, ON NORTH SIDE OF CURTIS, FIRST POLE EAST FROM CHERRY HILLS DR. STA. 43+49, 35' LT. ELEV. 755.43