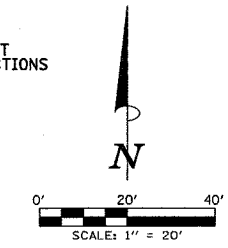


SEC. 27, T.19 N., R.8 E., 3rd P.M.
CHAMPAIGN COUNTY, ILLINOIS

F.A.U. RTE.	SECTION	COUNTY	TOTAL SHEETS	SHEET NO.
807	00-00374-00-PV	CHAMPAIGN	149	36
STA. 47+50		TO STA. 51+50		
FEB. ROAD DIST. NO. 7 ILLINOIS F.A. PROJECT M-5181(38)				
CONTRACT NO. 91308				

LEGEND

- PROPOSED BITUMINOUS PAVEMENT TRANSITION - SEE TYPICAL SECTIONS
- PROPOSED PCC DRIVEWAY PAVEMENT (SEE DETAIL)
- PROPOSED SIDEWALK RAMP (SEE DETAIL)
- PROPOSED AGGREGATE SUBGRADE, SPECIAL
- INCIDENTAL BITUMINOUS SURFACING, 8" (PLACE IN TWO LIFTS)
- PIPE UNDERDRAINS 6"



SEE INTERSECTION DETAILS FOR ADDITIONAL INFORMATION.

SEE SCHEDULE OF QUANTITIES FOR TYPICAL SECTION PAVEMENT PAY ITEMS AND THEIR LOCATIONS.

PROP. CURVE CURTIS-3
PI STA. = 48+08.23
Δ = 2° 45' 40" (LT)
D = 0° 53' 13"
R = 6,460.00'
T = 155.69'
L = 311.32'
E = 1.88'
P.C. STA = 46+52.54
P.R.C. STA = 49+63.86
S.E. = NONE

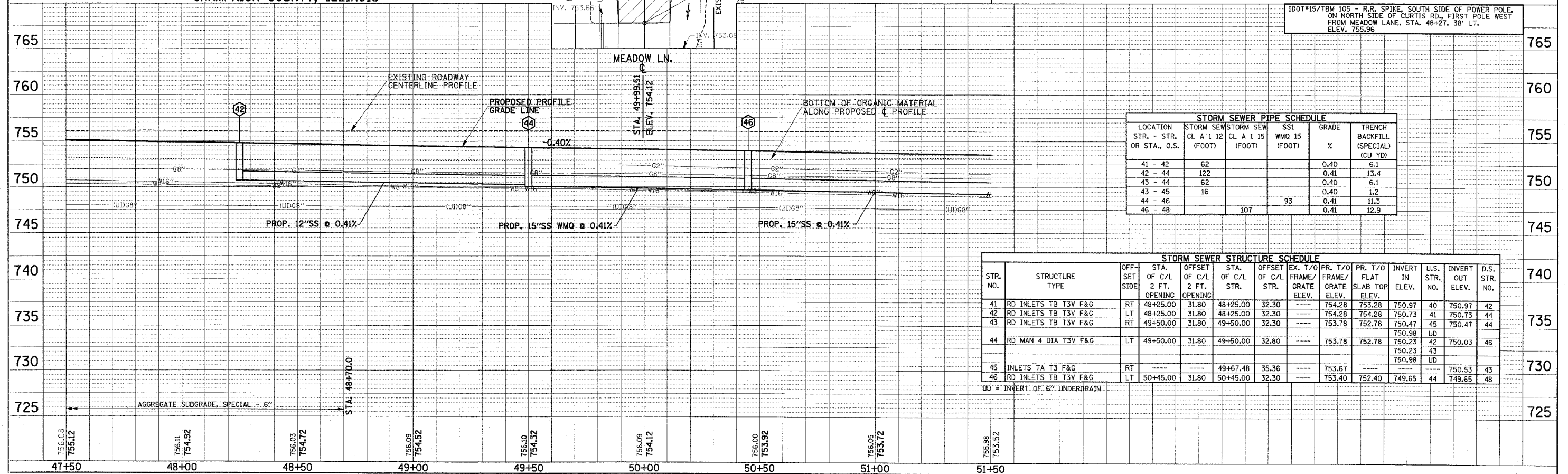
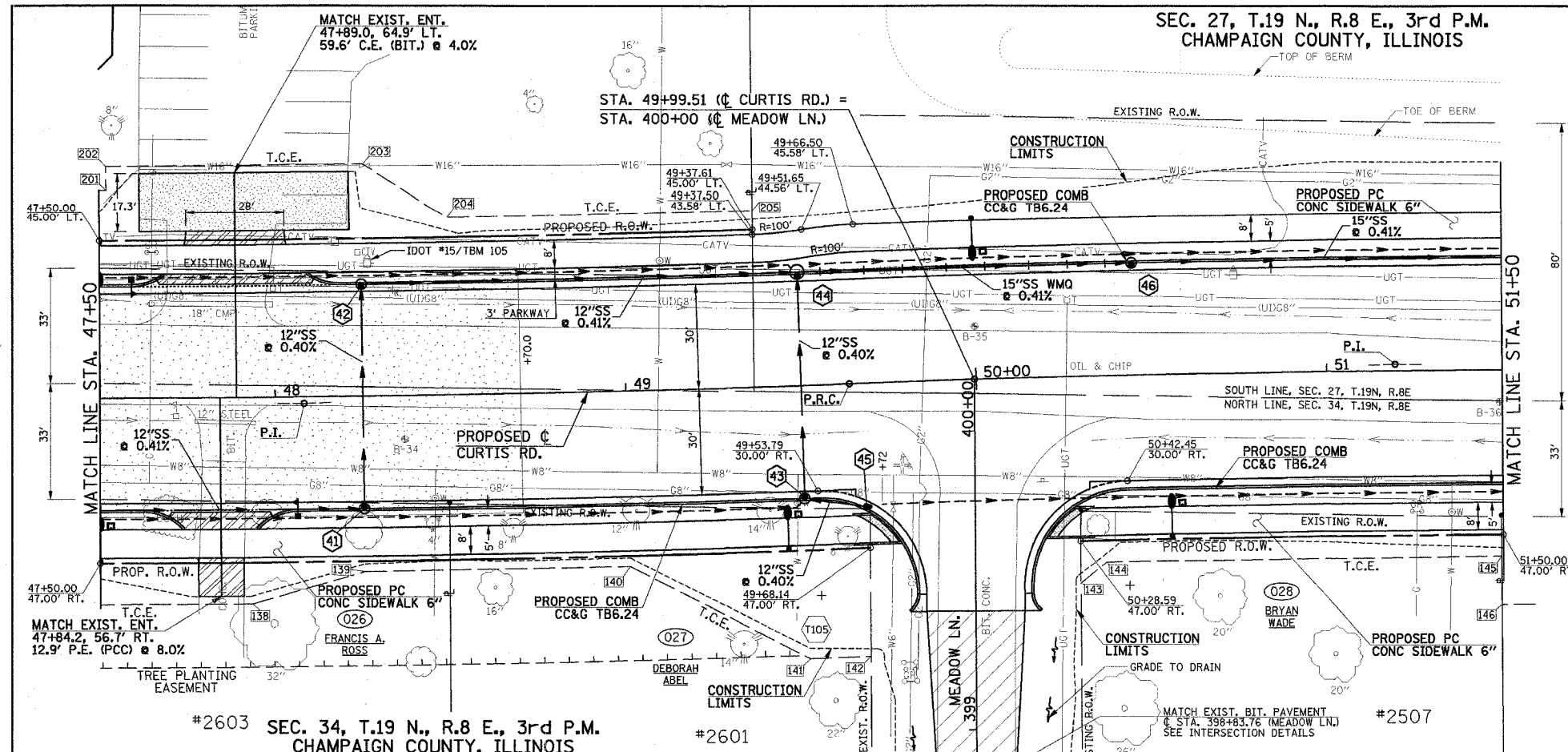
PROP. CURVE CURTIS-4
PI STA. = 51+19.55
Δ = 2° 45' 40" (RT)
D = 0° 53' 13"
R = 6,460.00'
T = 155.69'
L = 311.32'
E = 1.88'
P.R.C. STA = 49+63.86
P.T. STA = 52+75.18
S.E. = NONE

TEMPORARY CONSTRUCTION EASEMENT STATIONS AND OFFSETS

POINT	STATION	LOCATION
201	47+52.00	60.00' LT.
202	47+52.00	67.00' LT.
138	47+93.00	59.00' RT.
139	48+25.00	50.00' RT.
203	48+26.00	67.00' LT.
204	48+50.00	51.00' LT.
140	49+00.00	50.00' RT.
205	49+37.74	51.00' LT.
141	49+50.00	78.00' RT.
142	49+67.22	78.00' RT.
143	50+28.35	59.00' RT.
144	50+36.00	53.00' RT.
145	51+49.53	53.00' RT.
146	51+49.52	67.00' RT.

TREE PLANTING EASEMENT STATIONS AND OFFSETS

POINT	STATION	LOCATION
1105	49+48.23	77.00' RT.



LOCATION STR. - STR. OR STA., O.S.	STORM SEW CL A 1 12 (FOOT)	STORM SEW CL A 1 15 (FOOT)	SSI WMO 15 (FOOT)	GRADE %	TRENCH BACKFILL (SPECIAL) (CU YD)
41 - 42	62			0.40	6.1
42 - 44	122			0.41	13.4
43 - 44	62			0.40	6.1
43 - 45	16			0.40	1.2
44 - 46			93	0.41	11.3
46 - 48		107		0.41	12.9

STR. NO.	STRUCTURE TYPE	OFF-SET SIDE	STA. OF C/L 2 FT. OPENING	OFF-SET OF C/L 2 FT. OPENING	STA. OF C/L STR.	OFF-SET OF C/L STR.	EX. T/O FRAME/GRATE ELEV.	PR. T/O FRAME/GRATE ELEV.	PR. T/O FLAT SLAB TOP ELEV.	INVERT IN ELEV.	U.S. STR. NO.	INVERT OUT ELEV.	D.S. STR. NO.
41	RD INLETS TB T3V F&G	RT	48+25.00	31.80	48+25.00	32.30	754.28	754.28	750.73	750.97	40	750.97	42
42	RD INLETS TB T3V F&G	LT	48+25.00	31.80	48+25.00	32.30	754.28	754.28	750.73	750.73	41	750.73	44
43	RD INLETS TB T3V F&G	RT	49+50.00	31.80	49+50.00	32.30	753.78	752.78	750.47	750.47	45	750.47	44
44	RD MAN 4 DIA T3V F&G	LT	49+50.00	31.80	49+50.00	32.80	753.78	752.78	750.23	750.98	42	750.03	46
45	INLETS TA T3 F&G	RT			49+67.48	35.36	753.67			750.98			
46	RD INLETS TB T3V F&G	LT	50+45.00	31.80	50+45.00	32.30	753.40	752.40	749.65	749.65	44	749.65	48

UD = INVERT OF 6" UNDERDRAIN

DATE: _____ BY: _____
PLAN: _____
NOTE BOOK: _____
ALIGNED CHECKED: _____
CADD FILE NAME: _____

DATE: _____ BY: _____
PROFILE: _____
NOTE BOOK: _____
GRADE CHECKED: _____
STRUCTURE: _____
NOTATION CHECKED: _____