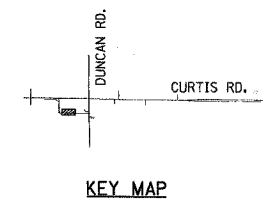
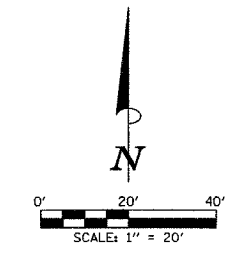
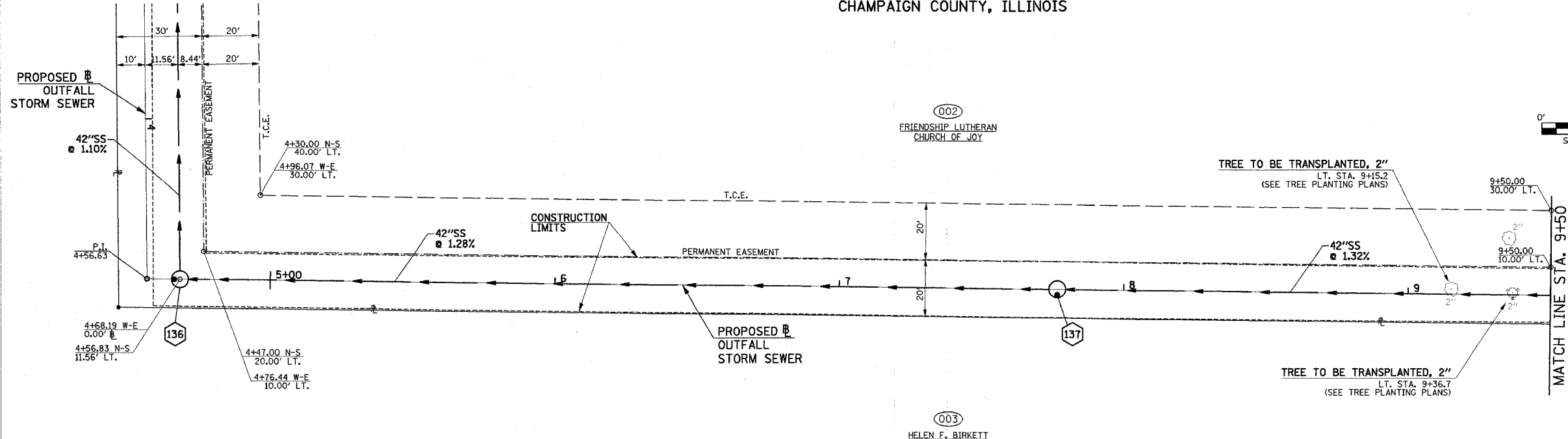


SEC. 33, T.19 N., R.8 E., 3rd P.M.
CHAMPAIGN COUNTY, ILLINOIS

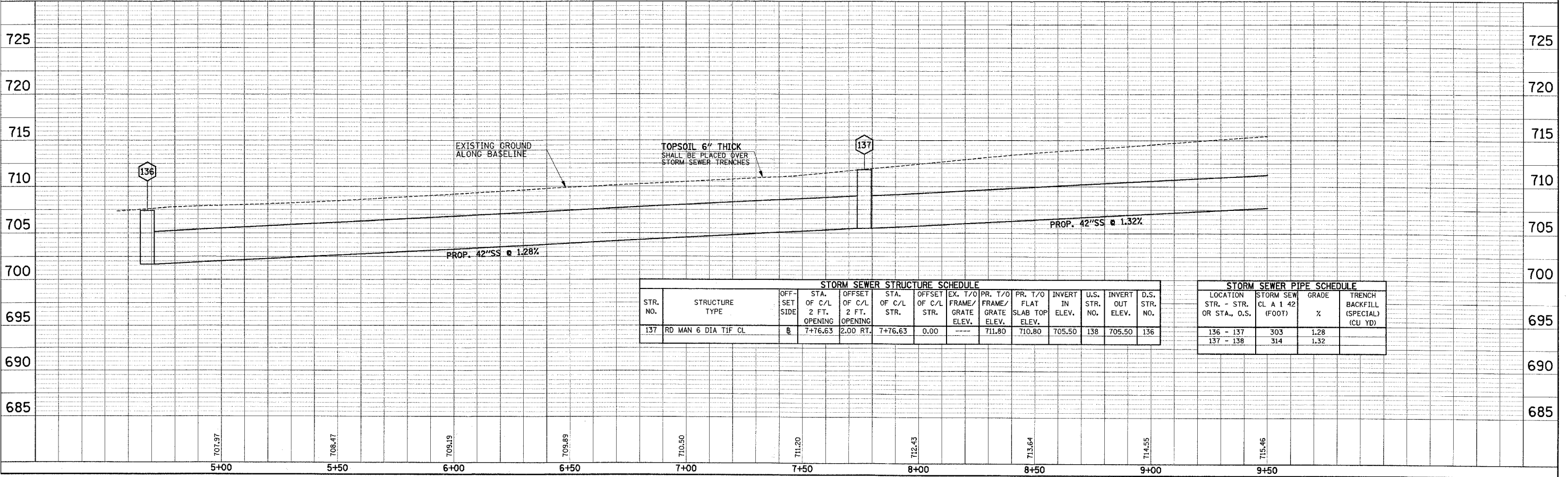
F.A.U. R.F.E.	SECTION	COUNTY	TOTAL SHEETS	SHEET NO.
807	00-00374-00-PV	CHAMPAIGN	149	49
STA. 4+56.63		TO STA. 9+50		
FED. ROAD DIST. NO. 7 ILLINOIS F.A. PROJECT M-5181(3B)				
CONTRACT NO. 91308				



DATE	
BY	
PLAN	
SURVEYED	
NOTE BOOK	
NO.	
ALIGNED	
CHECKED	
DATE	
FILE NAME	



DATE	
BY	
PROFILE	
SURVEYED	
GRADES CHECKED	
NO.	
STRUCTURE	
NOTING	
CHANGED	



STR. NO.	STRUCTURE TYPE	OFF-SET SIDE	STA. OF C/L 2 FT. OPENING	OFFSET OF C/L 2 FT. OPENING	STA. OF C/L STR.	OFFSET OF C/L STR.	EX. T/O FRAME/GRATE ELEV.	PR. T/O FRAME/GRATE ELEV.	PR. T/O FLAT SLAB TOP ELEV.	INVERT IN ELEV.	U.S. STR. NO.	INVERT OUT ELEV.	D.S. STR. NO.
137	RD MAN 6 DIA TIF CL	B	7+76.63	2.00 RT.	7+76.63	0.00	---	711.80	710.80	705.50	138	705.50	136

LOCATION STR. - STR. OR STA., O.S.	STORM SEW CL A 1 42 (FOOT)	GRADE %	TRENCH BACKFILL (SPECIAL) (CU YD)
136 - 137	303	1.28	
137 - 138	314	1.32	