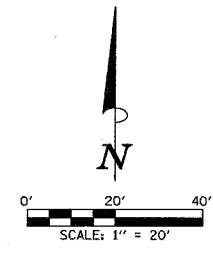
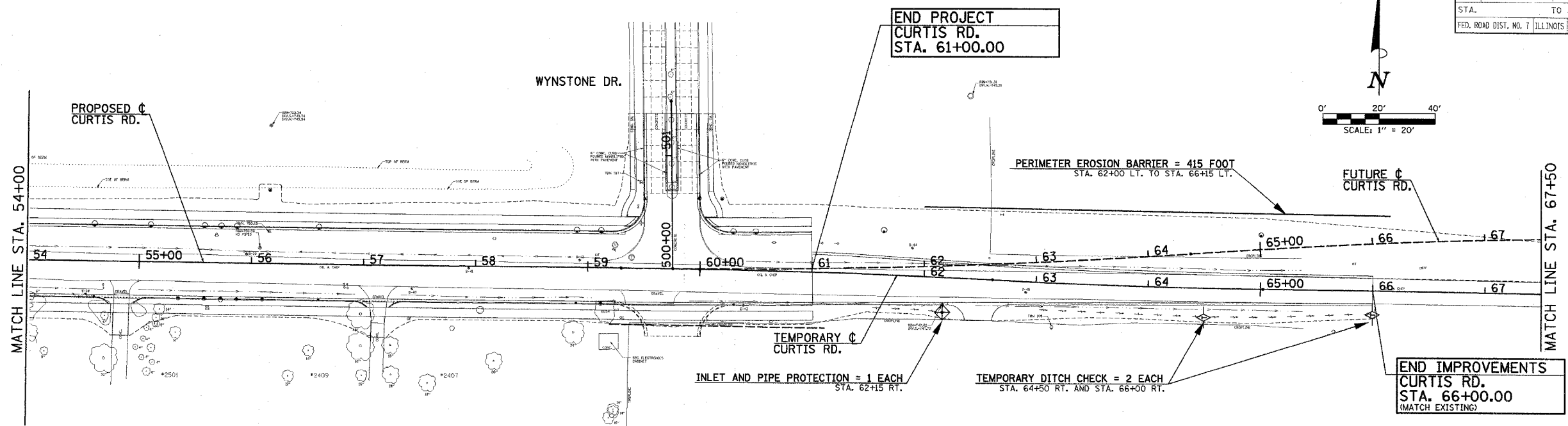
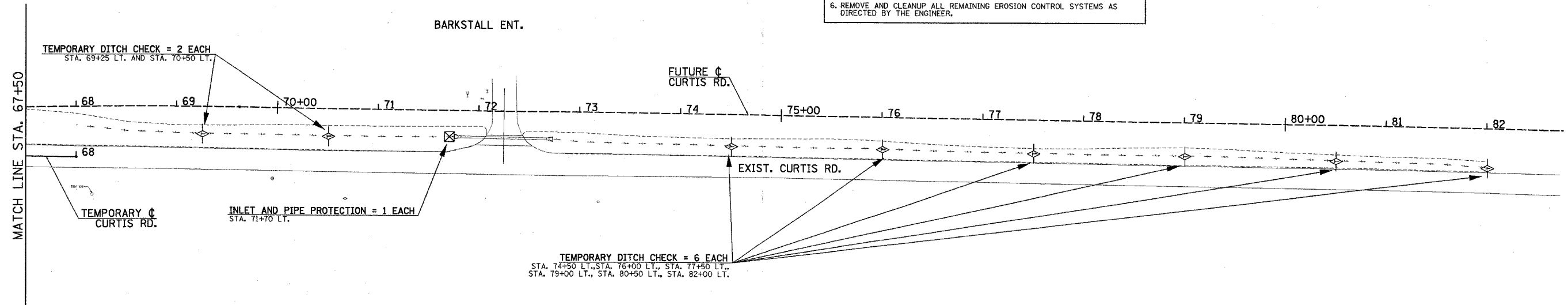


F.A.D. NO.	SECTION	COUNTY	TOTAL SHEETS	SHEET NO.
807	00-00374-00-PV	CHAMPAIGN	149	55
STA.	TO STA.			
FED. ROAD DIST. NO. 7	ILLINOIS	F.A. PROJECT	M-5181(38)	
CONTRACT NO. 91308				



- EROSION CONTROL SYSTEMS INSTALLATION SEQUENCE**
1. REFER TO THE STAGE CONSTRUCTION AND MAINTENANCE OF TRAFFIC PLAN SHEETS FOR THE DETAILED SEQUENCE OF CONSTRUCTION AND STAGING PLAN.
  2. PLACE THE PERIMETER EROSION BARRIER PRIOR TO STARTING ANY WORK.
  3. INSTALL TEMPORARY DITCH CHECKS, INLET AND PIPE PROTECTION, INLET FILTERS AND TEMPORARY SEEDING AS SOON AS THE ROUGH GRADING IS COMPLETE OR DRAINAGE STRUCTURES HAVE BEEN CONSTRUCTED.
  4. MAINTAIN ALL EROSION CONTROL SYSTEMS UNTIL SUCH TIME THAT THEY CAN BE REMOVED AS DIRECTED BY THE ENGINEER.
  5. SEED, FERTILIZE, MULCH, AND PLACE SOD AS SOON AS FINAL GRADING AND SHAPING IS COMPLETE.
  6. REMOVE AND CLEANUP ALL REMAINING EROSION CONTROL SYSTEMS AS DIRECTED BY THE ENGINEER.



- LEGEND**
- CONSTRUCTION LIMITS
  - ◇ INDICATES TEMPORARY DITCH CHECK
  - ⊕ INDICATES INLET AND PIPE PROTECTION
  - INDICATES PERIMETER EROSION BARRIER

ILLINOIS DEPARTMENT OF TRANSPORTATION

**STORM WATER POLLUTION PREVENTION PLAN**

DATE : 8-05  
 DRAWN BY : S.M.W.  
 CHECKED BY : R.L.H.

SCALE : 1"=50'