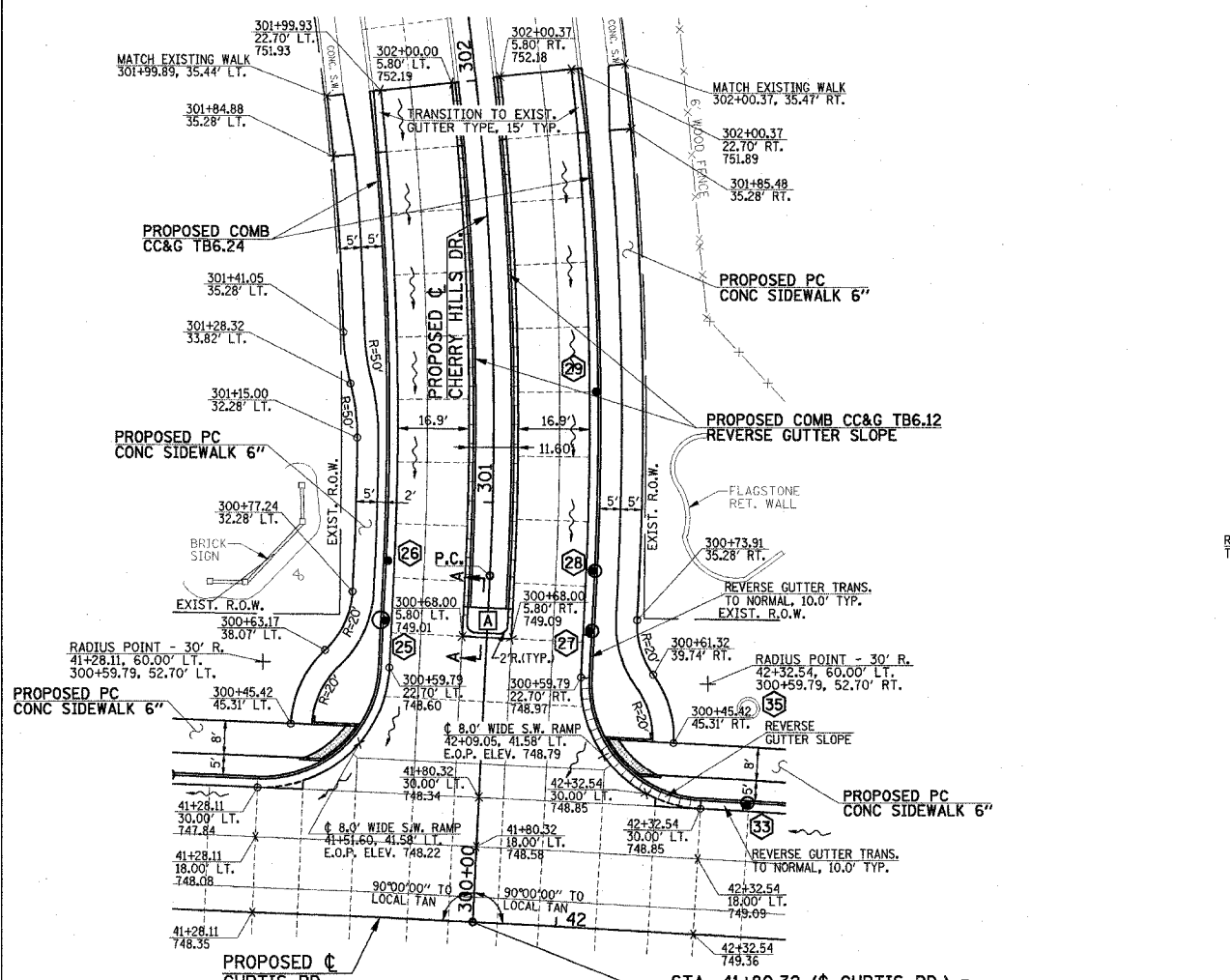


- LEGEND**
- PROPOSED BITUMINOUS PAVEMENT TRANSITION - SEE TYPICAL SECTIONS
  - PROPOSED SIDEWALK RAMP (SEE DETAIL)
  - REVERSE GUTTER SLOPE
  - STRUCTURE NUMBER (SEE PLAN/PROFILE SHEETS)
  - PROPOSED CONCRETE MEDIAN, TYPE SB-6.12 (SEE SECTION A-A)

SEE SCHEDULE OF QUANTITIES FOR TYPICAL SECTION PAVEMENT PAY ITEMS AND THEIR LOCATIONS.

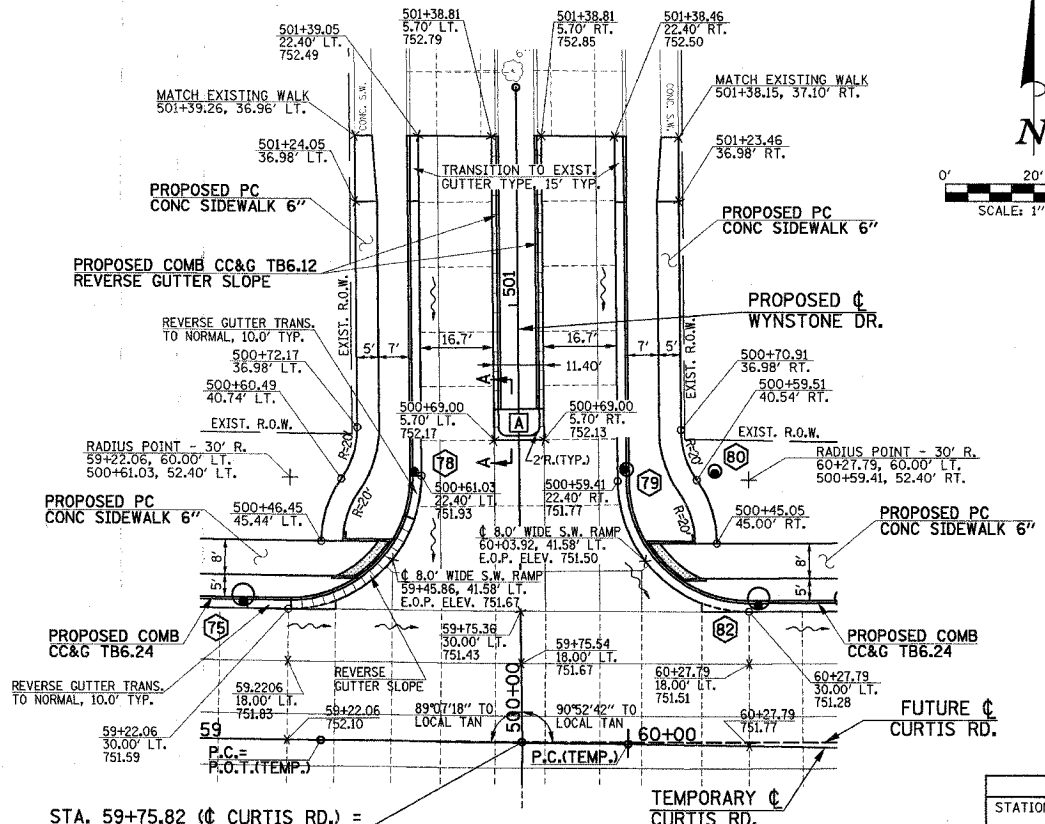
SEE PROPOSED TYPICAL SECTION SHEETS, HORIZONTAL ALIGNMENT LAYOUT AND CONTROL SHEET, SUPERELEVATION & CROSS SLOPE TRANSITION TABLES SHEET, REMOVALS/RELOCATIONS SHEETS, PLAN AND PROFILE SHEETS, PAVEMENT JOINT PLANS, MISCELLANEOUS DETAILS SHEETS, AND CROSS SECTION SHEETS FOR ADDITIONAL INFORMATION.



**CURTIS ROAD & CHERRY HILLS DRIVE**

**SPOT ELEVATION TABLE - CHERRY HILLS DR.**

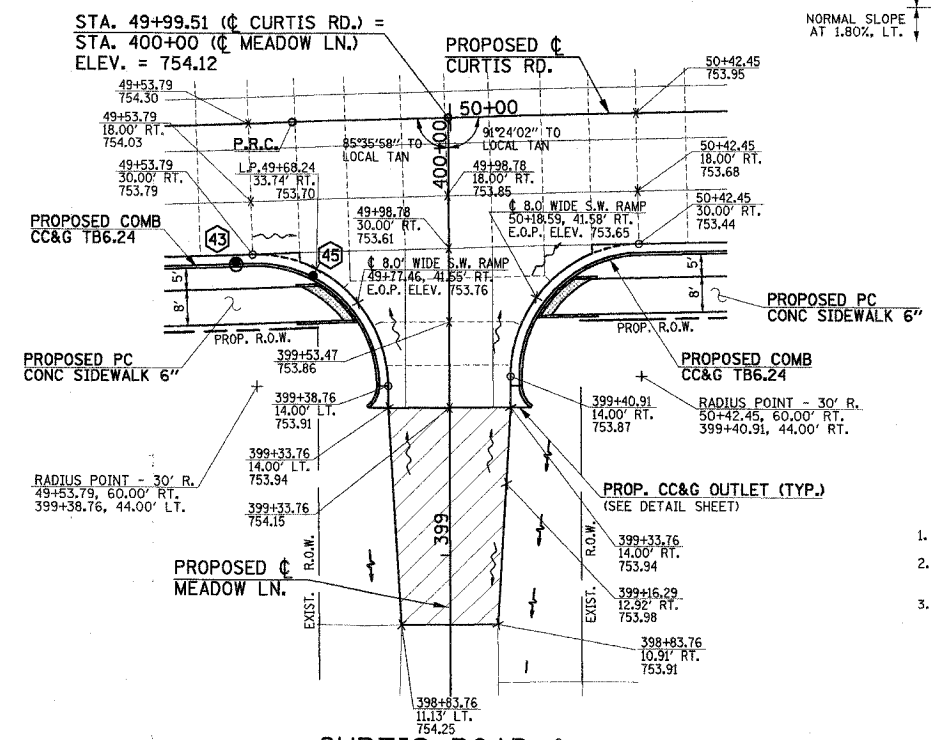
STATION	E.O.P. ELEV.	E.O.P. ELEV.	CENTERLINE P.G.L. ELEVATION	E.O.P. ELEV.	E.O.P. ELEV.
	22.70' LT.	5.80' LT.		5.80' RT.	22.70' RT.
300+70.00	748.80	749.05	749.14	749.13	749.11
300+80.00	749.00	749.26	749.34	749.32	749.25
300+90.00	749.23	749.48	749.57	749.53	749.41
301+00.00	749.48	749.73	749.82	749.76	749.59
301+10.00	749.75	750.00	750.09	750.02	749.80
301+20.00	750.05	750.30	750.39	750.30	750.04
301+30.00	750.36	750.62	750.70	750.61	750.32
301+40.00	750.69	750.94	751.03	750.93	750.64
301+50.00	751.00	751.25	751.34	751.24	750.96
301+60.00	751.28	751.53	751.62	751.52	751.23
301+70.00	751.51	751.76	751.85	751.75	751.46
301+80.00	751.69	751.95	752.03	751.94	751.65
301+90.00	751.83	752.09	752.18	752.08	751.79



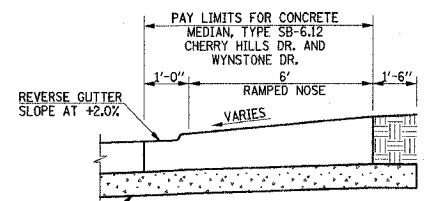
**CURTIS ROAD & WYNSTONE DRIVE**

**SPOT ELEVATION TABLE - WYNSTONE DR.**

STATION	E.O.P. ELEV.	E.O.P. ELEV.	CENTERLINE P.G.L. ELEVATION	E.O.P. ELEV.	E.O.P. ELEV.
	22.40' LT.	5.70' LT.		5.70' RT.	22.40' RT.
500+70.00	752.06	752.19	752.23	752.15	751.91
500+80.00	752.20	752.37	752.43	752.33	752.05
500+90.00	752.34	752.55	752.63	752.51	752.18
501+00.00	752.44	752.70	752.79	752.67	752.32
501+10.00	752.50	752.80	752.90	752.78	752.43
501+20.00	752.57	752.87	752.97	752.85	752.50



**CURTIS ROAD & MEADOW LANE**



- NOTES**
- THE RAMPED CONCRETE MEDIAN NOSES AT CHERRY HILLS DR. AND WYNSTONE DR. SHALL BE CONSTRUCTED IN ACCORDANCE WITH STD. 606301.

- NOTES**
- ALL ELEVATIONS REFERRED TO ARE TO THE TOP OF FINISHED CONSTRUCTION.
  - SEE DRAINAGE STRUCTURE TABLES ON PLAN/PROFILE SHEETS FOR HORIZONTAL LOCATIONS AND VERTICAL ELEVATION OF DRAINAGE STRUCTURES.
  - ALL STREET RADII ARE DIMENSIONED TO THE EDGE OF PAVEMENT, UNLESS OTHERWISE SHOWN.

ILLINOIS DEPARTMENT OF TRANSPORTATION  
**INTERSECTION DETAILS**

DATE : 8-05  
DRAWN BY : S.M.W.  
CHECKED BY : R.L.H.