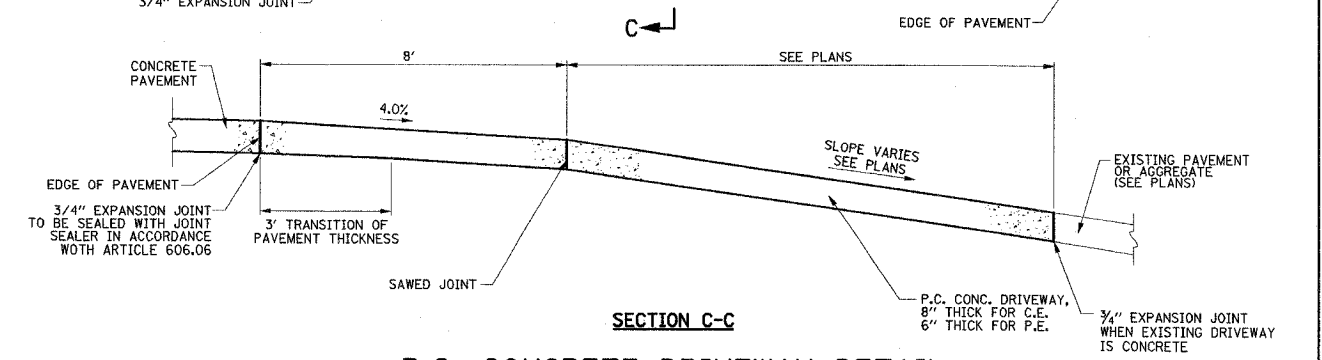
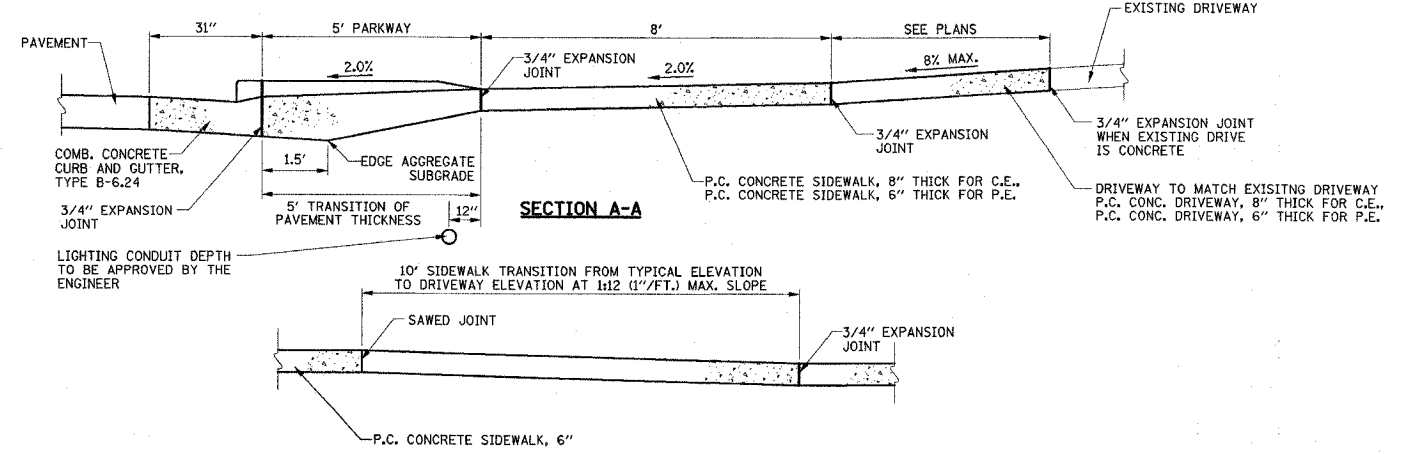
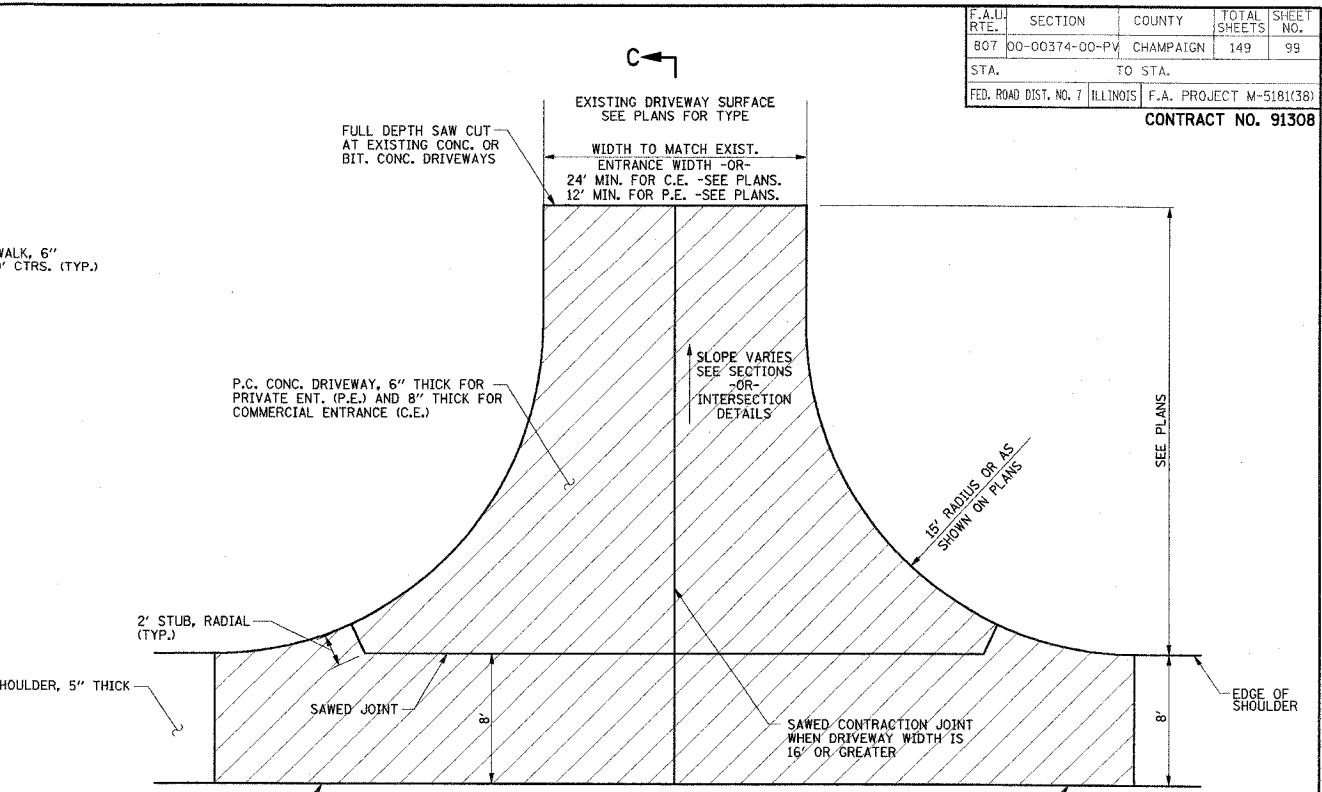
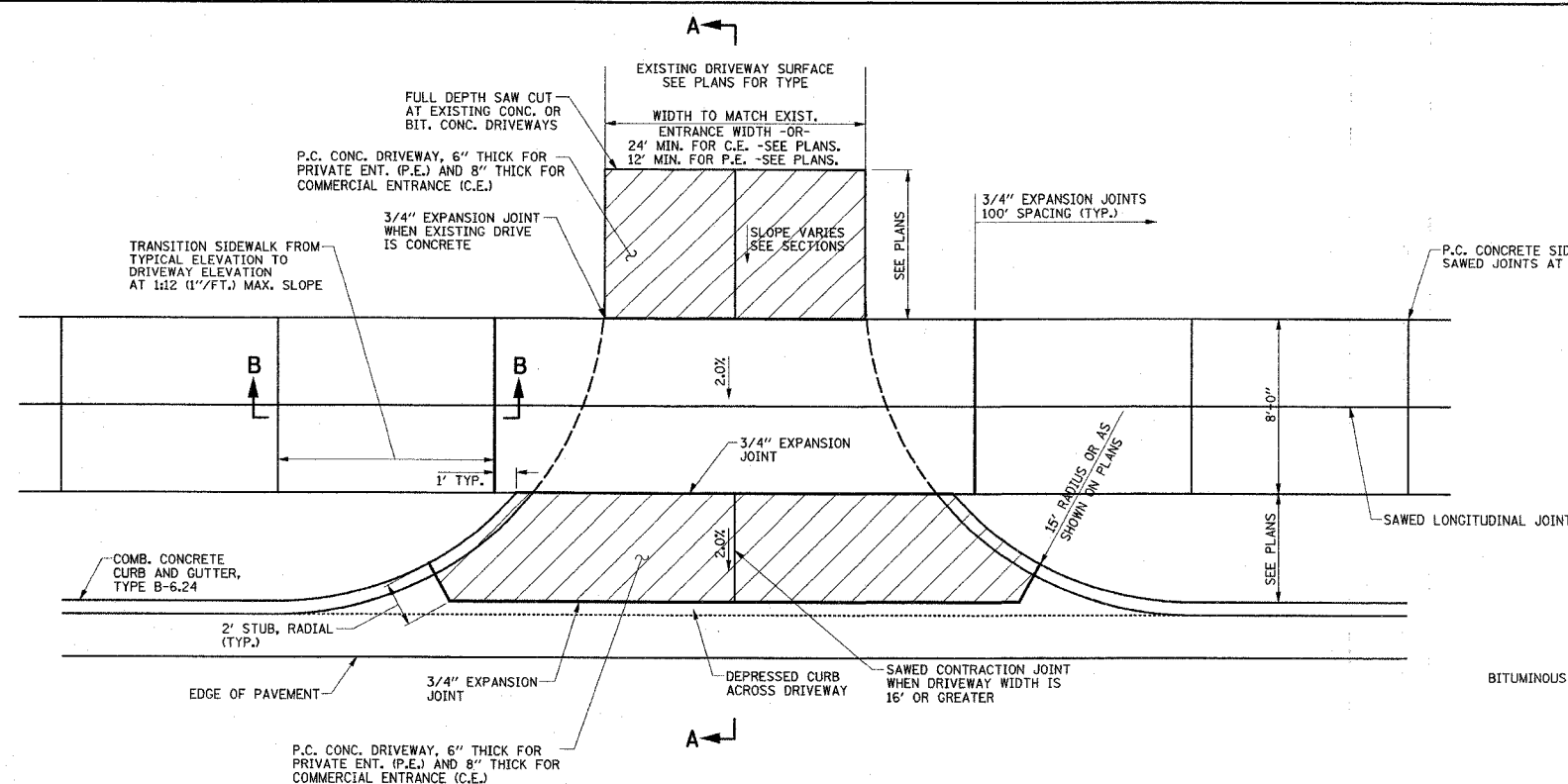


F.A.U. RTE.	SECTION	COUNTY	TOTAL SHEETS	SHEET NO.
807	00-00374-00-PV	CHAMPAIGN	149	99
STA.	TO STA.			
FED. ROAD DIST. NO. 7	ILLINOIS	F.A. PROJECT M-5181(38)		

CONTRACT NO. 91308



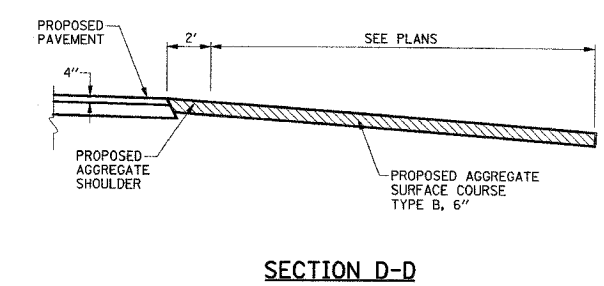
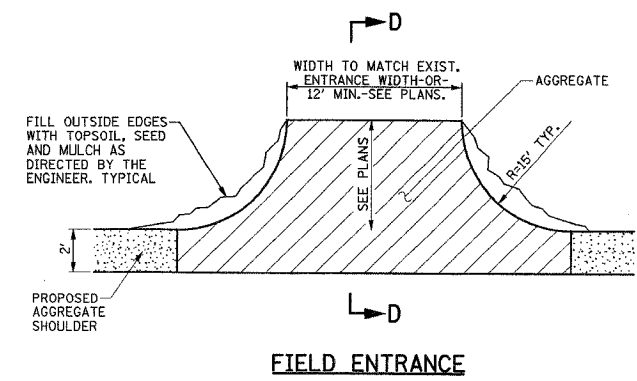
**P.C. CONCRETE DRIVEWAY DETAIL
ADJACENT TO COMB. CONC. CURB & GUTTER, TYPE B-6.24
(PRIVATE AND COMMERCIAL ENTRANCES)**

**P.C. CONCRETE DRIVEWAY DETAIL
ADJACENT TO BITUMINOUS SHOULDER
(PRIVATE AND COMMERCIAL ENTRANCES)**

**GENERAL NOTES FOR
P.C.C. DRIVEWAY PAVEMENT**

1. THE COST OF CONSTRUCTING THE DEPRESSED GUTTER OR CURB INCLUDING THE 2' STUB AS SHOWN SHALL BE CONSIDERED INCLUDED IN THE COST OF CONSTRUCTING THE COMBINATION CONCRETE CURB AND GUTTER TYPE B-6.24 AND NO ADDITIONAL COMPENSATION WILL BE ALLOWED.
2. THE COST OF FURNISHING AND INSTALLING THE 3/4\"/>

NOTE:
THE COST OF FURNISHING AND PLACING THE TOPSOIL WILL BE CONSIDERED AS INCIDENTAL AND WILL NOT BE PAID FOR SEPARATELY. THE SEEDING AND MULCH WILL BE PAID FOR IN ACCORDANCE WITH SECTION 250 AND 251 OF THE STANDARD SPECIFICATIONS.



SECTION D-D

ILLINOIS DEPARTMENT OF TRANSPORTATION

MISCELLANEOUS DETAILS

FIELD ENTRANCES ON CURTIS ROAD

DATE : 8-05
DRAWN BY : S.M.W.
CHECKED BY : R.L.H.