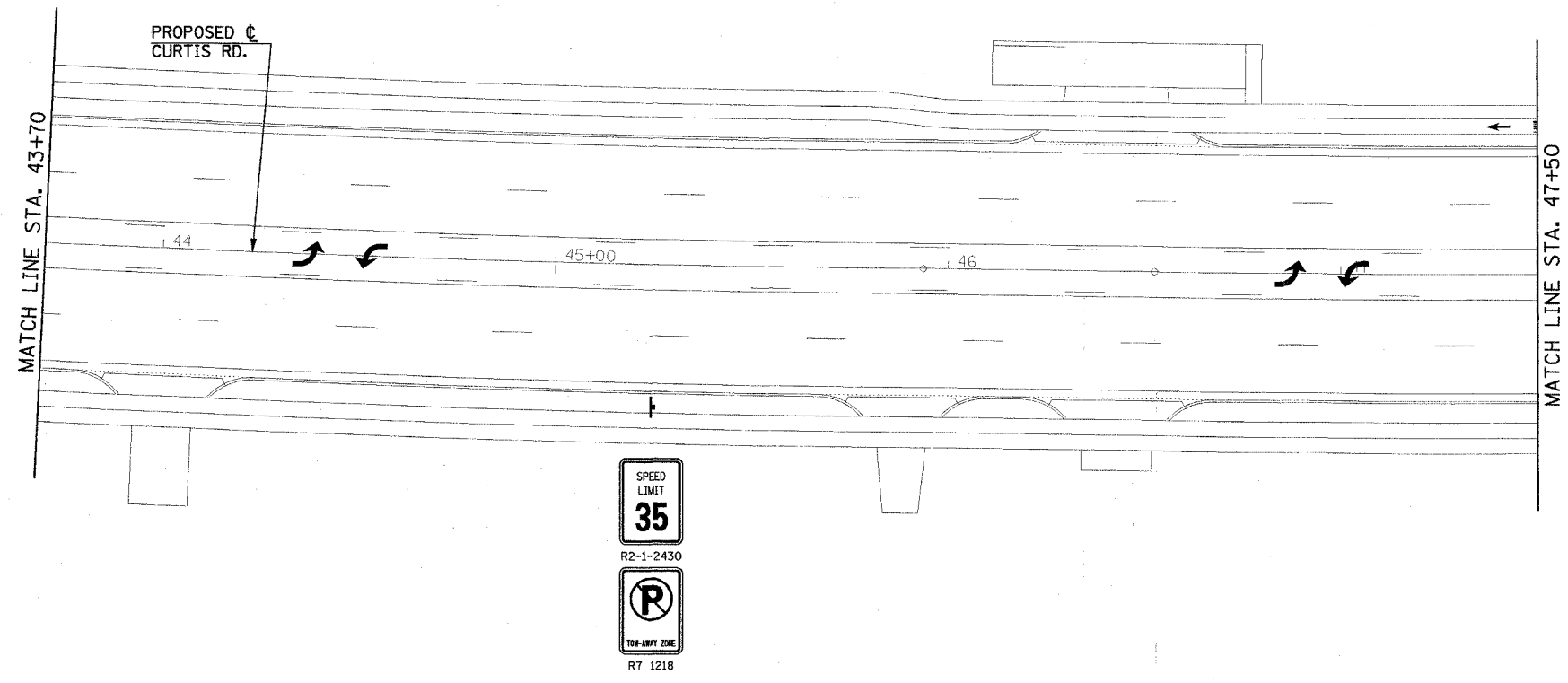
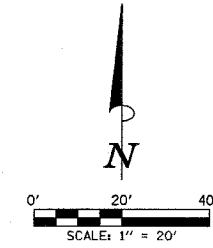


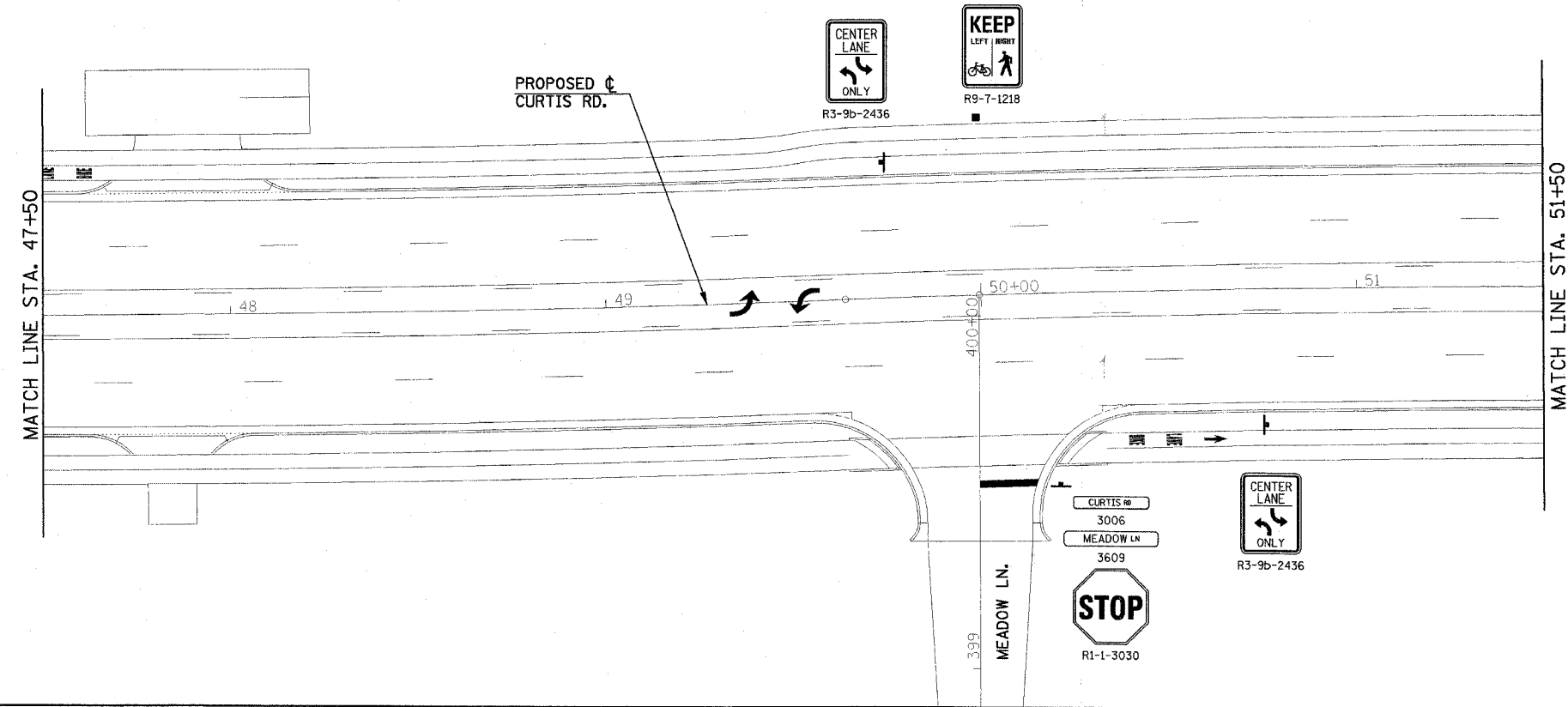
F.A.U. RTE.	SECTION	COUNTY	TOTAL SHEETS	SHEET NO.
807	00-00374-00-PV	CHAMPAIGN	149	143
STA. 43+70		TO STA. 51+50		
FED. ROAD DIST. NO. 7 ILLINOIS F.A. PROJECT M-5181(38)				
<b>CONTRACT NO. 91308</b>				



THE PROPOSED TRAFFIC CONTROL SIGNS SHOWN WILL BE FURNISHED AND INSTALLED BY OTHERS AND ARE FOR INFORMATION ONLY. THE CONTRACTOR SHALL NOTIFY THE ENGINEER A MINIMUM OF 14 DAYS PRIOR TO OPENING THE PROPOSED ROADWAYS TO TRAFFIC. THE ENGINEER WILL COORDINATE THE SIGN INSTALLATION WITH THE CITY OF CHAMPAIGN.

ALL SIGNS SHALL BE INSTALLED IN CONFORMANCE WITH IDOT GUIDELINES AND STANDARDS FOR HORIZONTAL AND VERTICAL CLEAR ZONES.

LEGEND	
—	POST MOUNTED SIGN
■	LIGHT POLE MOUNTED SIGN
●	MAST ARM POLE MOUNTED SIGN



ILLINOIS DEPARTMENT OF TRANSPORTATION  
**SIGNING PLAN**  
 (FOR INFORMATION ONLY)  
 DATE : 8-05  
 DRAWN BY : J.A.J.  
 CHECKED BY : R.L.H.  
 SCALE : 1"=20'