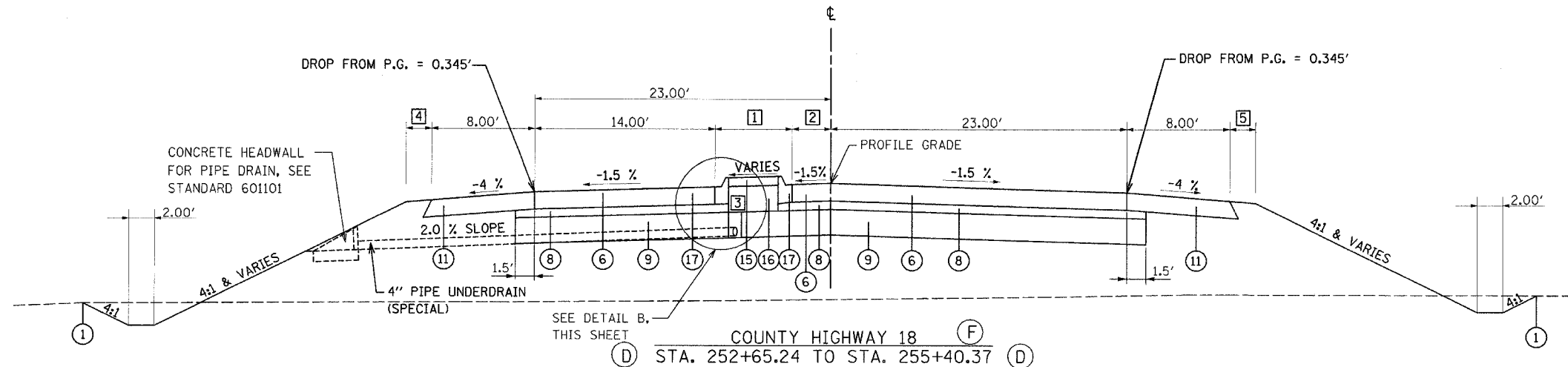
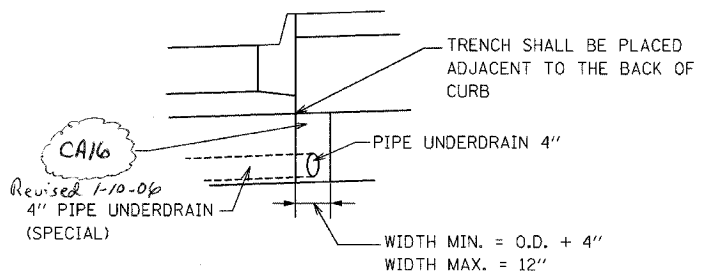


F.A.S. RTE.	SECTION	COUNTY	TOTAL SHEETS	SHEET NO.
642	99-00124-02-PV	COLES	229	6
STA.		TO STA.		
FED. ROAD DIST. NO.		ILLINOIS	FED. AID PROJECT	

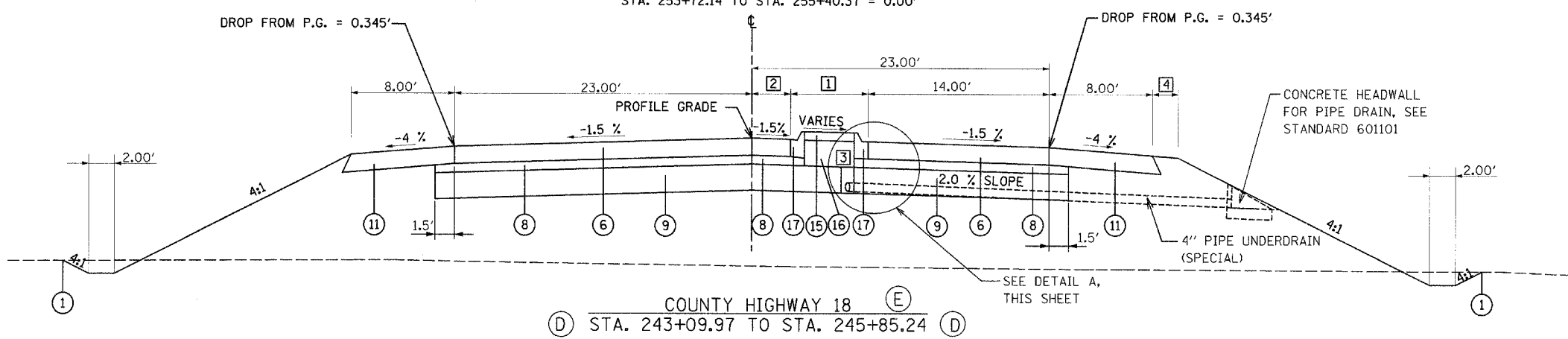


- ① EXISTING GROUND
- ② BITUMINOUS CONCRETE PAVEMENT (FULL-DEPTH), SUPERPAVE, 11"
- ③ BITUMINOUS CONCRETE PAVEMENT (FULL-DEPTH), SUPERPAVE, 8"
- ④ BITUMINOUS CONCRETE SURFACE COURSE, SUPERPAVE, IL 9.5L (LOW ESAL)
- ⑤ AGGREGATE BASE COURSE, TYPE A 10"
- ⑥ PORTLAND CEMENT CONCRETE PAVEMENT 8" (JOINTED)
- ⑦ PORTLAND CEMENT CONCRETE PAVEMENT 9 1/2" (JOINTED)
- ⑧ AGGREGATE BASE COURSE, TYPE A 4"
- ⑨ PROCESSING LIME MODIFIED SOILS 12"
- ⑩ SUBBASE GRANULAR MATERIAL, TYPE C (COST INCLUDED IN ⑨)
- ⑪ BITUMINOUS SHOULDERS SUPERPAVE 8"
- ⑫ AGGREGATE SHOULDERS, TYPE A
- ⑬ AGGREGATE SHOULDERS, TYPE B 6"
- ⑭ PORTLAND CEMENT CONCRETE SHOULDERS 9 1/2"
- ⑮ CONCRETE MEDIAN SURFACE, 4"
- ⑯ AGGREGATE BASE COURSE, TYPE B
- ⑰ COMBINATION CONCRETE CURB AND GUTTER, TYPE M-4.06

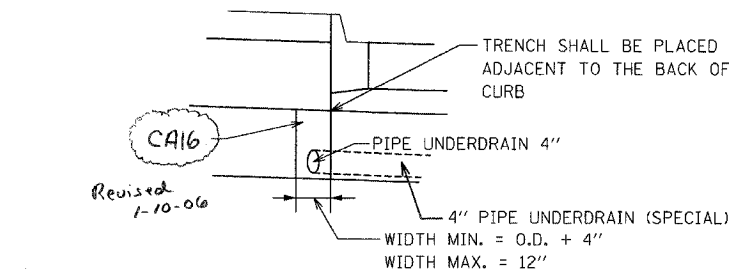


- SEE DETAIL B, THIS SHEET
- COUNTY HIGHWAY 18 (F)**  
**④ STA. 252+65.24 TO STA. 255+40.37 ④**
- ① STA. 252+65.24 TO STA. 253+35.24 = TRANSITION FROM 9.00' TO 6.00'  
 STA. 253+35.24 TO STA. 255+40.37 = 6.00'
  - ② STA. 252+65.24 TO STA. 253+35.24 = TRANSITION FROM 0.00' TO 3.00'  
 STA. 253+35.24 TO STA. 255+40.37 = 3.00'
  - ③ STA. 252+65.24 TO STA. 255+40.37 = SEE DETAIL B, THIS SHEET
  - ④ STA. 252+65.24 TO STA. 255+40.37 = 3.26'
  - ⑤ STA. 252+65.24 TO STA. 252+88.14 = 3.26'  
 STA. 252+88.14 TO STA. 253+13.14 = TRANSITION FROM 3.26' TO 4.00'  
 STA. 253+13.14 TO STA. 253+48.14 = 4.00'  
 STA. 253+48.14 TO STA. 253+72.14 = TRANSITION FROM 4.00' TO 0.00'  
 STA. 253+72.14 TO STA. 255+40.37 = 0.00'

**DETAIL B**  
 SEE STANDARD 601001 FOR MORE DETAILS  
 SEE SHEET NO. 24 FOR LOCATIONS OF 4" PIPE UNDERDRAIN (SPECIAL)



- SEE DETAIL A, THIS SHEET
- COUNTY HIGHWAY 18 (E)**  
**④ STA. 243+09.97 TO STA. 245+85.24 ④**
- ① STA. 243+09.97 TO STA. 245+15.24 = 6.00'  
 STA. 245+15.24 TO STA. 245+85.24 = TRANSITION FROM 6.00' TO 9.00'
  - ② STA. 243+09.97 TO STA. 245+15.24 = 3.00'  
 STA. 245+15.24 TO STA. 245+85.24 = TRANSITION FROM 3.00' TO 0.00'
  - ③ STA. 243+09.97 TO STA. 245+85.24 = SEE DETAIL A THIS SHEET
  - ④ STA. 243+09.97 TO STA. 243+72.84 = 0'  
 STA. 243+72.84 TO STA. 243+96.84 = TRANSITION FROM 0.00' TO 4.00'  
 STA. 243+96.84 TO STA. 244+31.84 = 4.00'  
 STA. 244+31.84 TO STA. 244+56.84 = TRANSITION FROM 4.00' TO 3.26'  
 STA. 244+56.84 TO STA. 245+85.24 = 3.26'



**DETAIL A**  
 SEE STANDARD 601001 FOR MORE DETAILS  
 SEE SHEET NO. 24 FOR LOCATIONS OF 4" PIPE UNDERDRAIN (SPECIAL)

- NOTES :
- 1 SEE CROSS SECTIONS FOR DITCH ELEVATIONS
  - 2 SEE CROSS SECTIONS FOR SIDE SLOPE TRANSITION LOCATIONS.
  - 3 EARTH SHOULDER WIDENED FOR GUARDRAIL. SEE STANDARD 630301. SEE MISCELLANEOUS DETAILS SHEET, SHEET NO. 116, FOR BITUMINOUS SHOULDER CURB.

REVISIONS	
NAME	DATE

ILLINOIS DEPARTMENT OF TRANSPORTATION  
 PROPOSED TYPICAL SECTIONS  
 C.H. 18  
 FAI-57, FAS 642  
 SEC NO. 15-23K, 99-00124-02-PV  
 COLES COUNTY, ILLINOIS

SCALE: NOT TO SCALE  
 DATE 07/13/2005  
 DRAWN BY SKM  
 CHECKED BY JWM



07/13/2005  
 SKM 12/26/03  
 SKM 07/23/03  
 SKM 07/05/04  
 1:07 JUES BT sc:0286/Civil/Sheet/5037p.dgn