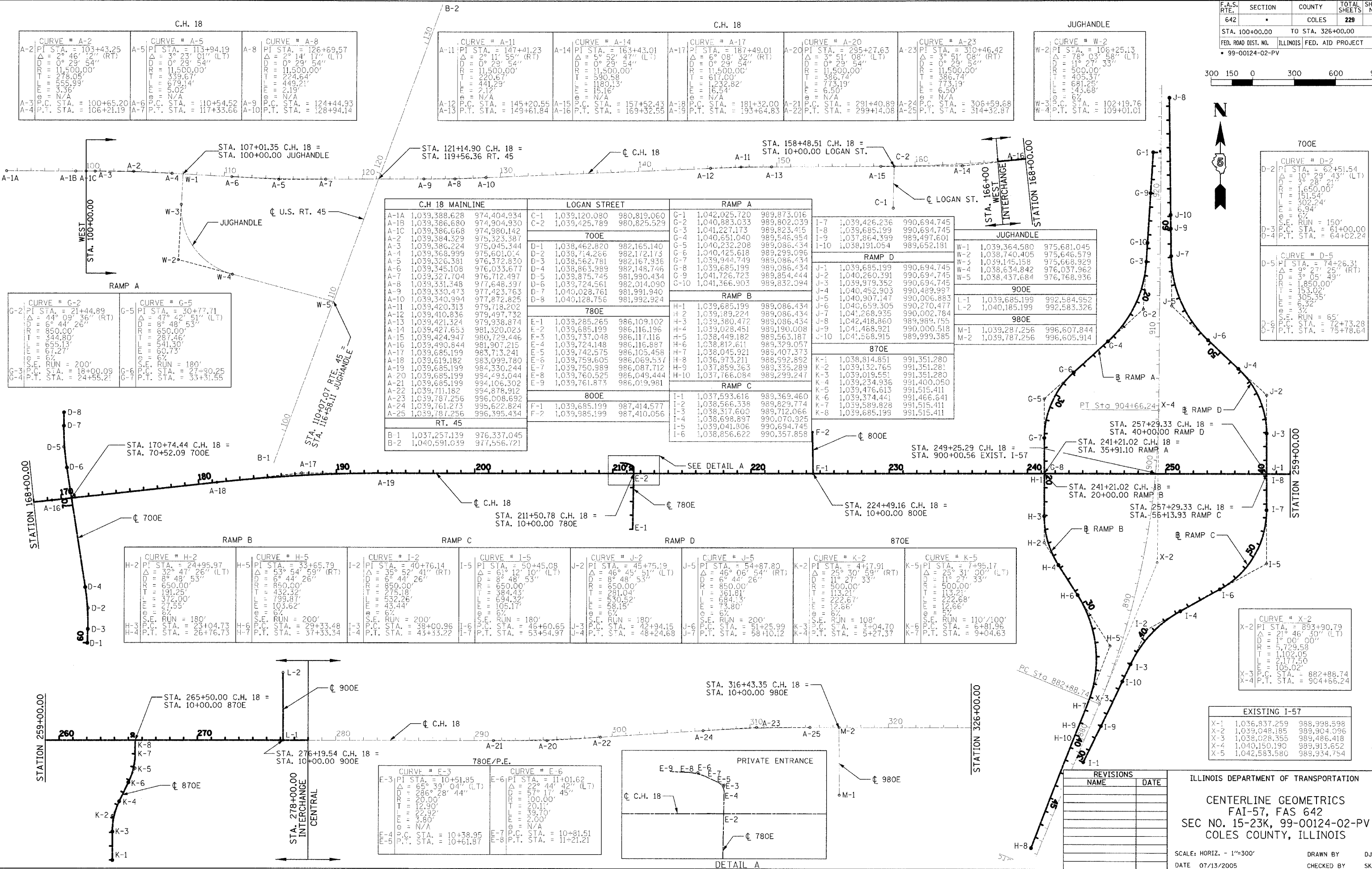
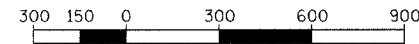


F.A.S. RTE.	SECTION	COUNTY	TOTAL SHEETS	SHEET NO.
642	*	COLES	229	27
STA. 100+00.00		TO STA. 326+00.00		
FED. ROAD DIST. NO.		ILLINOIS FED. AID PROJECT		
* 99-00124-02-PV				



C.H. 18

CURVE # A-2 PI STA. = 103+43.25 Δ = 2° 46' 22" (RT) D = 0° 29' 54" R = 11,500.00' T = 278.05' E = 555.93' L = 336.35'P.C. STA. = 100+65.20 P.T. STA. = 106+21.19	CURVE # A-5 PI STA. = 113+94.19 Δ = 3° 23' 01" (LT) D = 0° 29' 54" R = 11,500.00' T = 339.67' E = 679.14' L = 5.02' P.C. STA. = 110+54.52 P.T. STA. = 117+33.66	CURVE # A-8 PI STA. = 126+69.57 Δ = 2° 14' 17" (LT) D = 0° 29' 54" R = 11,500.00' T = 224.64' E = 449.21' L = N/A P.C. STA. = 124+44.93 P.T. STA. = 128+94.14
------------------------------------------------------------------------------------------------------------------------------------------------------------------------------------------	--------------------------------------------------------------------------------------------------------------------------------------------------------------------------------------------	------------------------------------------------------------------------------------------------------------------------------------------------------------------------------------------

C.H. 18

CURVE # A-11 PI STA. = 147+41.23 Δ = 2° 11' 55" (RT) D = 0° 29' 54" R = 11,500.00' T = 220.67' E = 441.29' L = 2.12' P.C. STA. = 145+20.55 P.T. STA. = 149+61.84	CURVE # A-14 PI STA. = 163+43.01 Δ = 5° 52' 47" (LT) D = 0° 29' 54" R = 11,500.00' T = 590.58' E = 1180.13' L = 15.16' P.C. STA. = 157+52.43 P.T. STA. = 169+32.55	CURVE # A-17 PI STA. = 187+49.01 Δ = 6° 08' 32" (RT) D = 0° 29' 54" R = 11,500.00' T = 617.00' E = 1,232.82' L = 16.54' P.C. STA. = 181+32.00 P.T. STA. = 193+64.83	CURVE # A-20 PI STA. = 295+27.63 Δ = 3° 51' 08" (LT) D = 0° 29' 54" R = 11,500.00' T = 386.74' E = 773.19' L = 6.50' P.C. STA. = 291+40.89 P.T. STA. = 299+14.08	CURVE # A-23 PI STA. = 310+46.42 Δ = 3° 51' 08" (RT) D = 0° 29' 54" R = 11,500.00' T = 386.74' E = 773.19' L = 6.50' P.C. STA. = 306+59.68 P.T. STA. = 314+32.87
---------------------------------------------------------------------------------------------------------------------------------------------------------------------------------------------	-----------------------------------------------------------------------------------------------------------------------------------------------------------------------------------------------	------------------------------------------------------------------------------------------------------------------------------------------------------------------------------------------------	---------------------------------------------------------------------------------------------------------------------------------------------------------------------------------------------	---------------------------------------------------------------------------------------------------------------------------------------------------------------------------------------------

JUGHANDLE

CURVE # W-2 PI STA. = 106+25.13 Δ = 78° 03' 58" (LT) D = 11° 27' 33" R = 500.00' T = 302.54' E = 6.94' L = 6.7' P.C. STA. = 102+19.76 P.T. STA. = 109+01.01

C.H. 18 MAINLINE		LOGAN STREET		RAMP A	
A-1A	1,039,388.628	C-1	1,039,120.080	G-1	1,042,025.720
A-1B	1,039,386.680	C-2	1,039,425.789	G-2	1,040,883.033
A-1C	1,039,386.668	700E		G-3	1,041,227.173
A-2	1,039,384.329	D-1	1,038,462.820	G-4	1,040,651.040
A-3	1,039,386.224	D-2	1,038,714.266	G-5	1,040,232.208
A-4	1,039,368.999	D-3	1,038,562.781	G-6	1,040,425.618
A-5	1,039,326.381	D-4	1,038,863.989	G-7	1,039,944.749
A-6	1,039,345.108	D-5	1,039,875.745	G-8	1,039,685.199
A-7	1,039,327.704	D-6	1,039,724.561	G-9	1,041,726.723
A-8	1,039,331.348	D-7	1,040,028.761	G-10	1,041,366.903
A-9	1,039,330.473	D-8	1,040,128.756	RAMP B	
A-10	1,039,340.994	780E		H-1	1,039,685.199
A-11	1,039,420.313	E-1	1,039,285.265	H-2	1,039,189.224
A-12	1,039,410.836	E-2	1,039,685.199	H-3	1,039,380.472
A-13	1,039,421.324	E-3	1,039,737.048	H-4	1,039,028.451
A-14	1,039,427.653	E-4	1,039,724.148	H-5	1,038,449.182
A-15	1,039,424.947	E-5	1,039,724.148	H-6	1,038,812.611
A-16	1,039,430.844	E-6	1,039,742.575	H-7	1,038,045.921
A-17	1,039,685.199	E-7	1,039,759.605	H-8	1,036,973.211
A-18	1,039,619.182	E-8	1,039,750.989	H-9	1,037,859.363
A-19	1,039,685.199	E-9	1,039,760.525	H-10	1,037,766.084
A-20	1,039,685.199	800E		I-1	1,037,593.616
A-21	1,039,685.199	F-1	1,039,685.199	I-2	1,038,566.338
A-22	1,039,711.182	F-2	1,039,985.199	I-3	1,038,317.600
A-23	1,039,787.256	RT. 45		I-4	1,038,698.897
A-24	1,039,761.273	B-1	1,037,257.139	I-5	1,039,041.806
A-25	1,039,787.256	B-2	1,040,591.039	I-6	1,038,856.622
				I-7	1,038,856.622

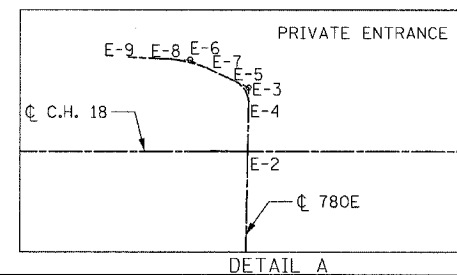
JUGHANDLE

W-1	1,039,364.580	975,681.045
W-2	1,038,740.405	975,646.579
W-3	1,039,145.158	975,668.929
W-4	1,038,634.842	976,037.962
W-5	1,038,437.684	976,768.936
900E		
J-1	1,039,685.199	990,694.745
J-2	1,040,260.391	990,694.745
J-3	1,039,979.352	990,694.745
J-4	1,040,452.903	990,489.997
J-5	1,040,907.147	990,006.883
J-6	1,040,659.305	990,270.477
J-7	1,041,268.935	990,002.784
J-8	1,042,418.860	989,989.755
J-9	1,041,468.921	990,000.518
J-10	1,041,568.915	989,999.385
800E		
K-1	1,038,814.851	991,351.280
K-2	1,039,132.765	991,351.280
K-3	1,039,019.551	991,351.280
K-4	1,039,234.936	991,400.050
K-5	1,039,476.613	991,515.411
K-6	1,039,374.441	991,466.641
K-7	1,039,589.828	991,515.411
K-8	1,039,685.199	991,515.411

RAMP B		RAMP C		RAMP D		870E	
H-2	1,039,244.957	I-2	1,039,407.614	J-2	1,039,457.519	K-2	1,039,417.911
H-3	1,039,244.957	I-3	1,039,407.614	J-3	1,039,457.519	K-3	1,039,417.911
H-4	1,039,244.957	I-4	1,039,407.614	J-4	1,039,457.519	K-4	1,039,417.911
H-5	1,039,244.957	I-5	1,039,407.614	J-5	1,039,457.519	K-5	1,039,417.911
H-6	1,039,244.957	I-6	1,039,407.614	J-6	1,039,457.519	K-6	1,039,417.911
H-7	1,039,244.957	I-7	1,039,407.614	J-7	1,039,457.519	K-7	1,039,417.911
H-8	1,039,244.957	I-8	1,039,407.614	J-8	1,039,457.519	K-8	1,039,417.911
H-9	1,039,244.957	I-9	1,039,407.614	J-9	1,039,457.519	K-9	1,039,417.911
H-10	1,039,244.957	I-10	1,039,407.614	J-10	1,039,457.519	K-10	1,039,417.911

PRIVATE ENTRANCE

E-3	1,039,105.185	E-6	1,039,110.162
E-4	1,039,105.185	E-7	1,039,110.162
E-5	1,039,105.185	E-8	1,039,110.162



CURVE # X-2

PI STA. = 893+90.79
Δ = 21° 46' 30" (LT)
D = 1° 00' 00"
R = 5,729.58'
T = 1,102.05'
E = 2,177.50'
L = 105.02'
P.C. STA. = 882+88.74
P.T. STA. = 904+66.24

EXISTING I-57

X-1	1,036,837.259	988,998.598
X-2	1,039,048.185	989,904.096
X-3	1,038,028.355	989,486.418
X-4	1,040,150.190	989,913.652
X-5	1,042,583.580	989,934.754

REVISIONS

NAME	DATE

ILLINOIS DEPARTMENT OF TRANSPORTATION
 CENTERLINE GEOMETRICS
 FAI-57, FAS 642
 SEC NO. 15-23K, 99-00124-02-PV
 COLES COUNTY, ILLINOIS
 SCALE: HORIZ. - 1"=300'
 DATE 07/13/2005
 DRAWN BY DJP
 CHECKED BY SKM



07/13/2005
 DWP 12/26/03
 DJP 12/26/03
 SKM 07/05/04
 HANSON PROFESSIONAL SERVICES INC.