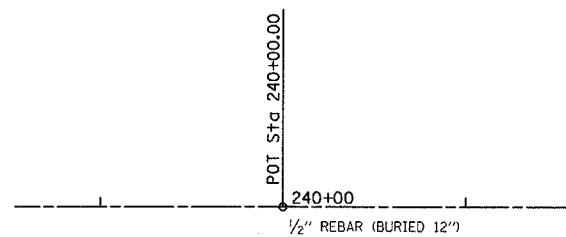


F.A.S. RTE.	SECTION	COUNTY	TOTAL SHEETS	SHEET NO.
642	99-00124-02-PV	COLES	229	30
STA.		TO STA.		
FED. ROAD DIST. NO.		ILLINOIS	FED. AID PROJECT	

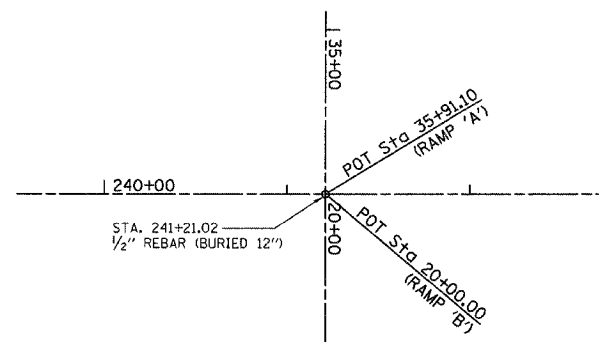
P.O.T.
C.H. 18 STA.240+00.00
(NO CROSS TIES AVAILABLE)

N 1039685.20
E 988965.42



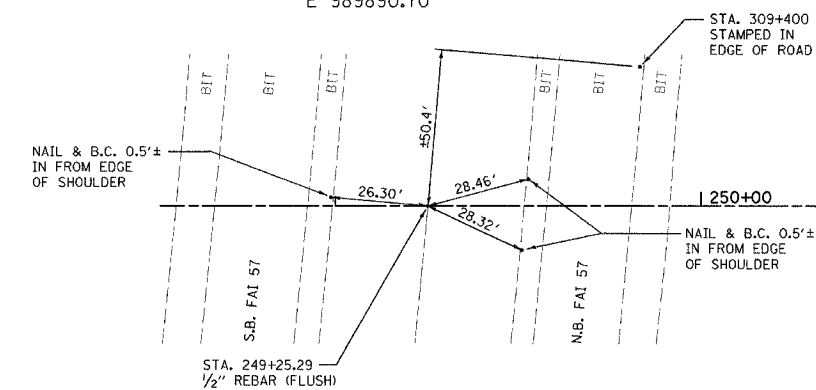
P.O.T. (C-C)
C.H. 18 STA.241+21.02
(NO CROSS TIES AVAILABLE)

N 1039685.20
E 989086.43



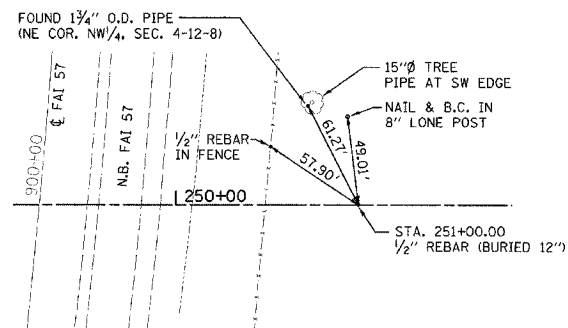
P.O.T. (C-C)
C.H. 18 STA.249+25.29

N 1039685.20
E 988990.70



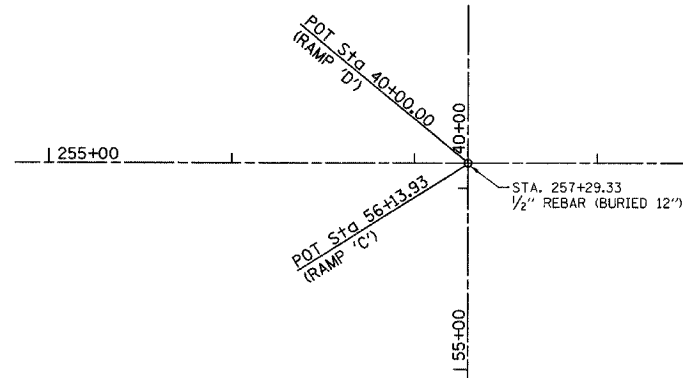
P.O.T.
C.H. 18 STA.251+00.00

N 1039685.20
E 990065.42



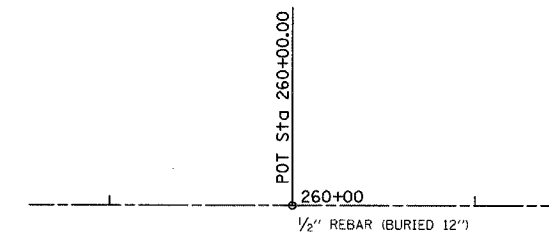
P.O.T. (C-C)
C.H. 18 STA.257+29.33
(NO CROSS TIES AVAILABLE)

N 1039685.20
E 990694.75



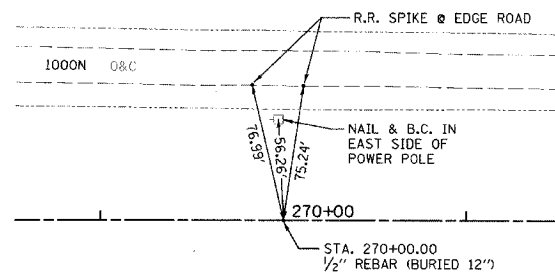
P.O.T.
C.H. 18 STA.260+00.00
(NO CROSS TIES AVAILABLE)

N 1039685.20
E 990965.42



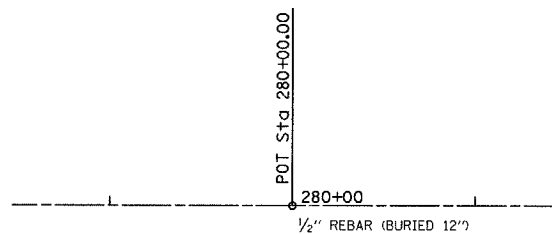
P.O.T.
C.H. 18 STA.270+00.00

N 1039685.20
E 991965.42



P.O.T.
C.H. 18 STA.280+00.00
(NO CROSS TIES AVAILABLE)

N 1039685.20
E 992965.42



REVISIONS	
NAME	DATE

ILLINOIS DEPARTMENT OF TRANSPORTATION

SURVEY TIES
FAI-57, FAS 642
SEC NO. 15-23K, 99-00124-02-PV
COLES COUNTY, ILLINOIS

SCALE: VERT. N.T.S.
HORIZ. N.T.S.
DATE 07/13/2005

DRAWN BY CAI
CHECKED BY MED