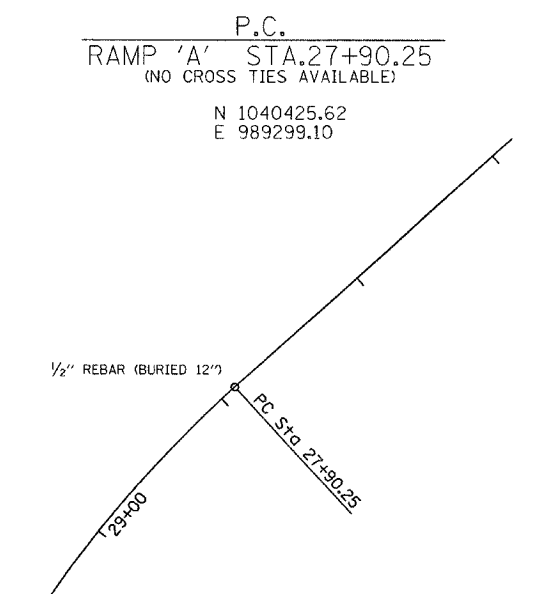
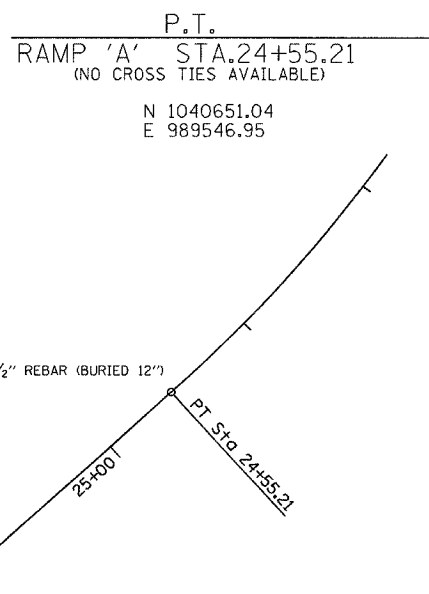
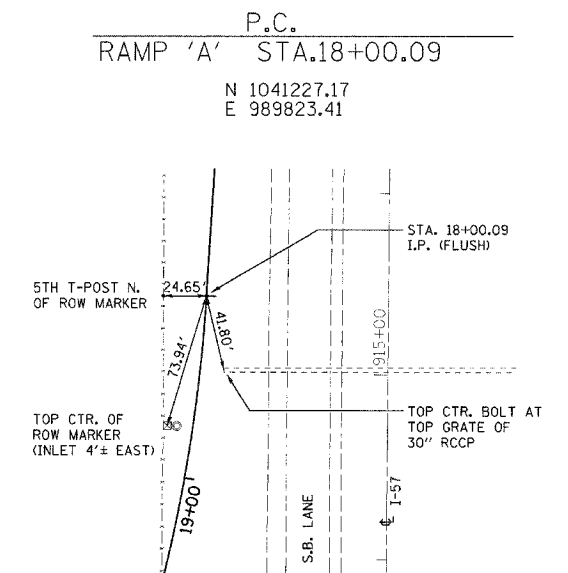
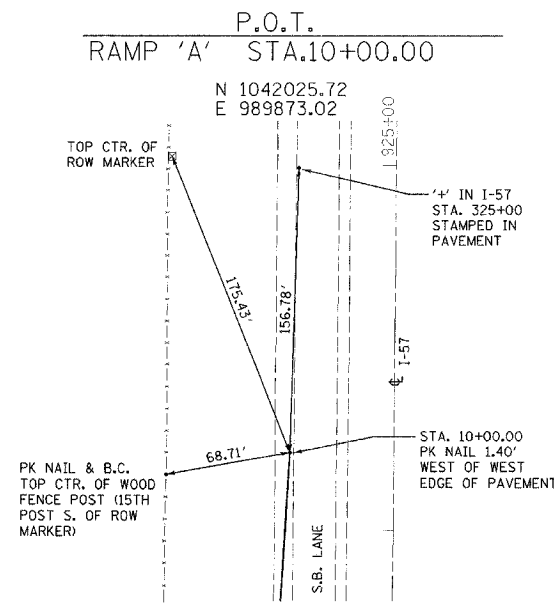
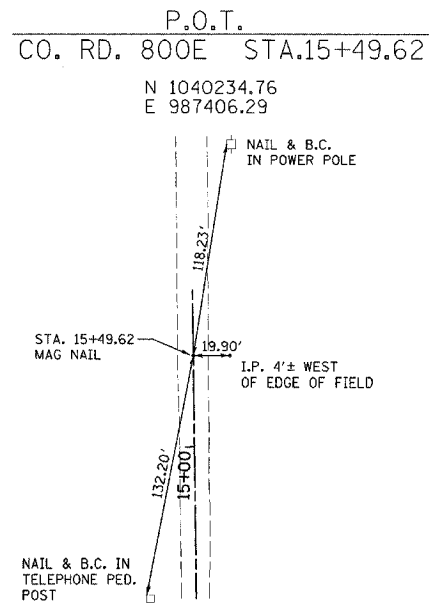
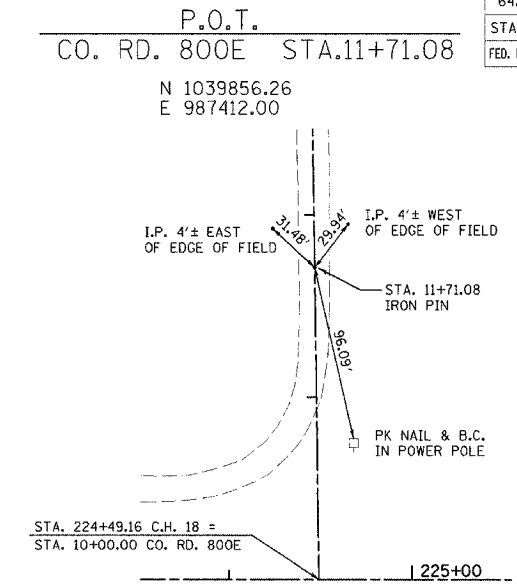
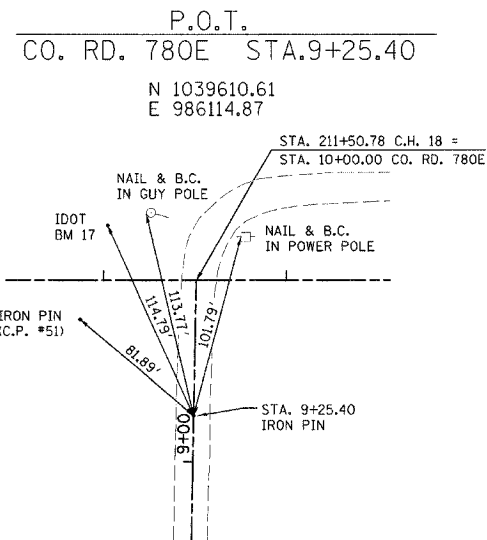
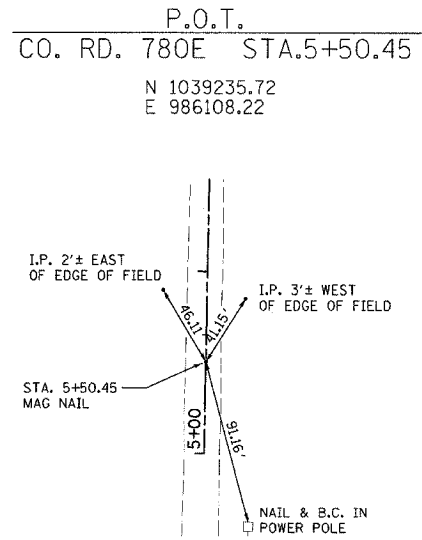


F.A.S. RTE.	SECTION	COUNTY	TOTAL SHEETS	SHEET NO.
642	99-00124-02-PV	COLES	229	32
STA.		TO STA.		
FED. ROAD DIST. NO.		ILLINOIS FED. AID PROJECT		



REVISIONS	
NAME	DATE

ILLINOIS DEPARTMENT OF TRANSPORTATION

SURVEY TIES
FAI-57, FAS 642
SEC NO. 15-23K, 99-00124-02-PV
COLES COUNTY, ILLINOIS

SCALE: VERT. N.T.S. DRAWN BY
HORIZ. N.T.S. CHECKED BY MED
DATE 07/13/2005

TUG PROJ. #191022-5
#FILEADR5EVS