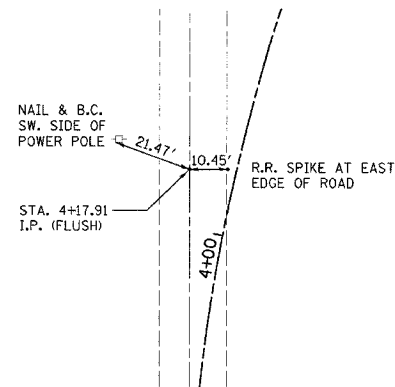
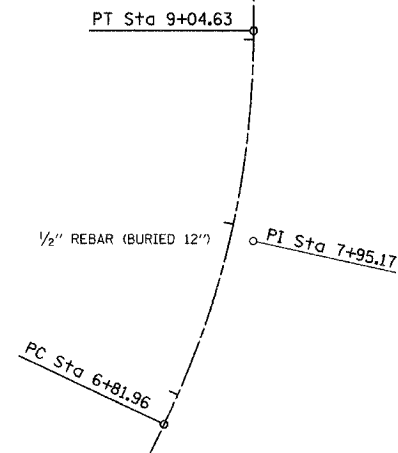


F.A.S. RTE.	SECTION	COUNTY	TOTAL SHEETS	SHEET NO.
642	99-00124-02-PV	COLES	229	33
STA.		TO STA.		
FED. ROAD DIST. NO.		ILLINOIS	FED. AID PROJECT	

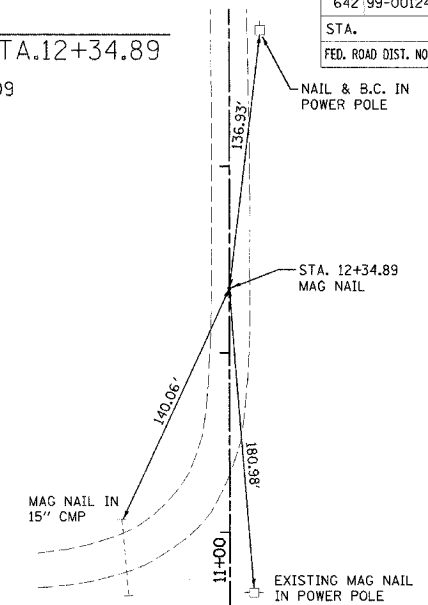
P.I.
CO. RD. 870E STA.4+17.91
N 1039132.77
E 991351.28



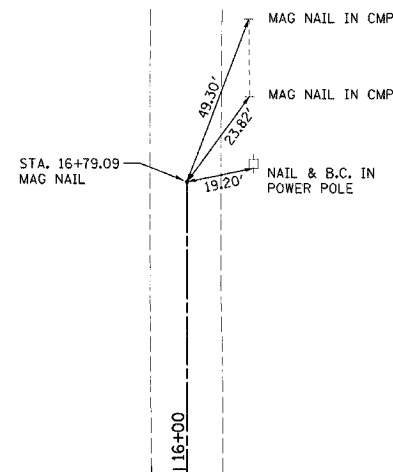
P.I.
CO. RD. 870E STA.7+95.17
(NO CROSS TIES AVAILABLE)
N 1039476.61
E 991515.41



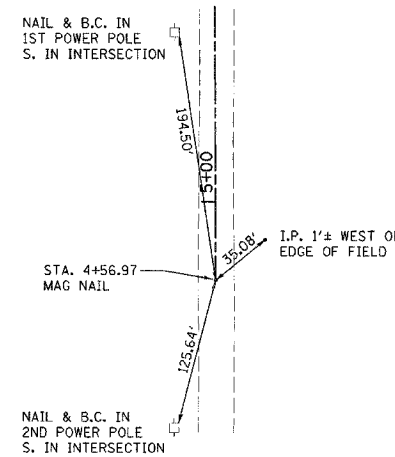
P.O.T.
CO. RD. 900E STA.12+34.89
N 1039920.09
E 992584.19



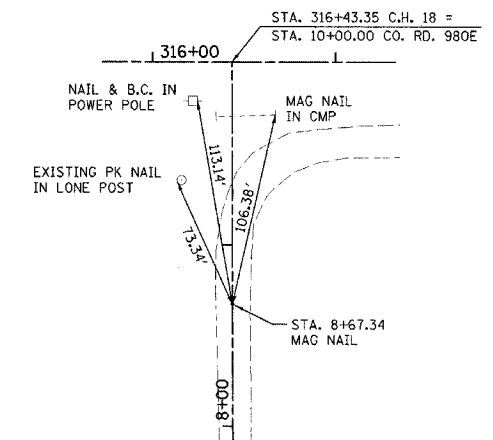
P.O.T.
CO. RD. 900E STA.16+79.09
N 1040364.29
E 992582.74



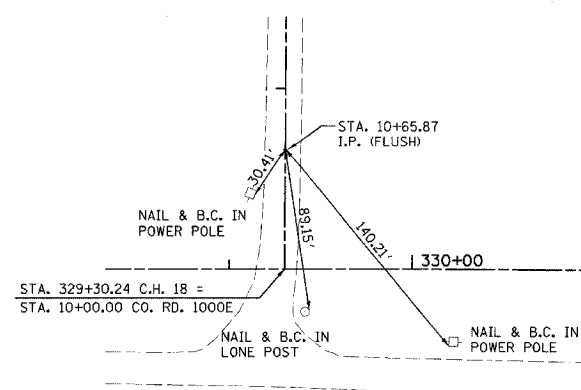
P.O.T.
CO. RD. 980E STA.4+56.97
N 1039244.23
E 996608.01



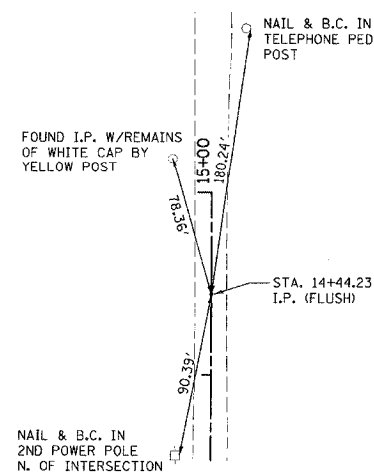
P.O.T.
CO. RD. 980E STA.8+67.34
N 1039654.60
E 996606.43



P.O.T.
CO. RD. 1000E STA.10+65.87
N 1039853.13
E 997893.02



P.O.T.
CO. RD. 1000E STA.14+44.23
N 1040231.48
E 997894.25



REVISIONS	
NAME	DATE

ILLINOIS DEPARTMENT OF TRANSPORTATION
SURVEY TIES
FAI-57, FAS 642
SEC NO. 15-23K, 99-00124-02-PV
COLES COUNTY, ILLINOIS
SCALE: VERT. N.T.S. DRAWN BY
HORIZ. N.T.S. CHECKED BY MED
DATE 07/13/2005

TUC PROJ. #3131022-5
6/11/05/3/2005