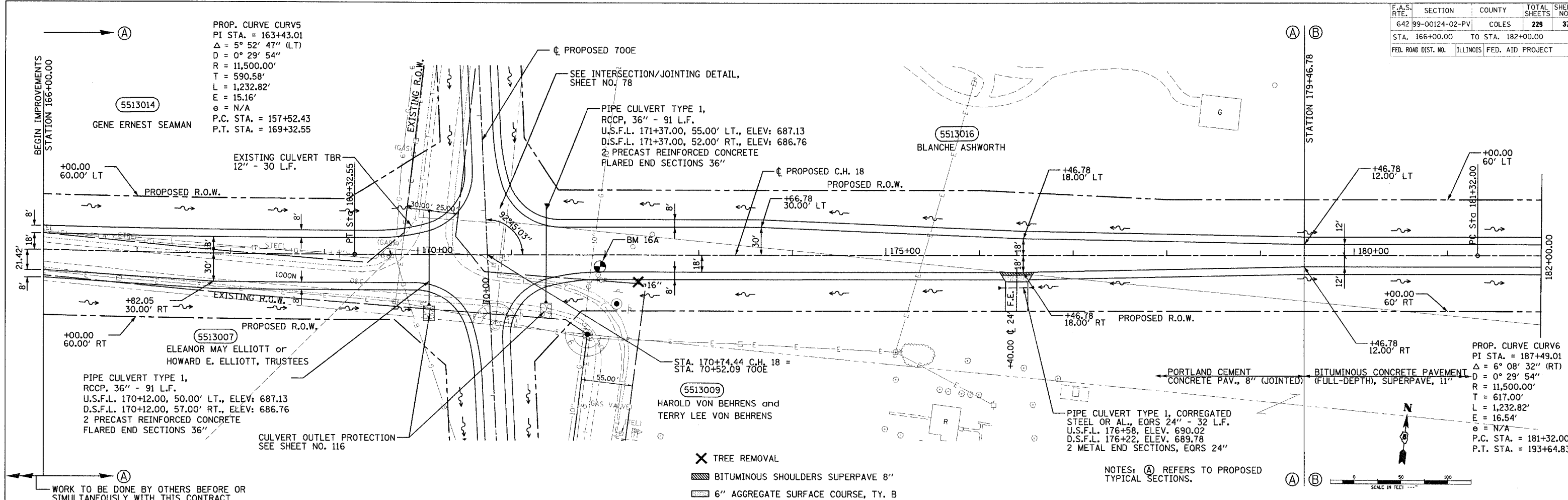


F.A.S. RTE.	SECTION	COUNTY	TOTAL SHEETS	SHEET NO.
642	99-00124-02-PV	COLES	229	37
STA. 166+00.00 TO STA. 182+00.00		ILLINOIS FED. AID PROJECT		

DATE: _____ BY: _____
 SURVEYED: _____
 PLOTTED: _____
 NOTE BOOK: _____
 NO. _____
 HANSON PROFESSIONAL SERVICES INC. 2005



PROP. CURVE CURV5
 PI STA. = 163+43.01
 $\Delta = 5^\circ 52' 47''$ (LT)
 $D = 0^\circ 29' 54''$
 $R = 11,500.00'$
 $T = 590.58'$
 $L = 1,232.82'$
 $E = 15.16'$
 $\theta = N/A$
 P.C. STA. = 157+52.43
 P.T. STA. = 169+32.55

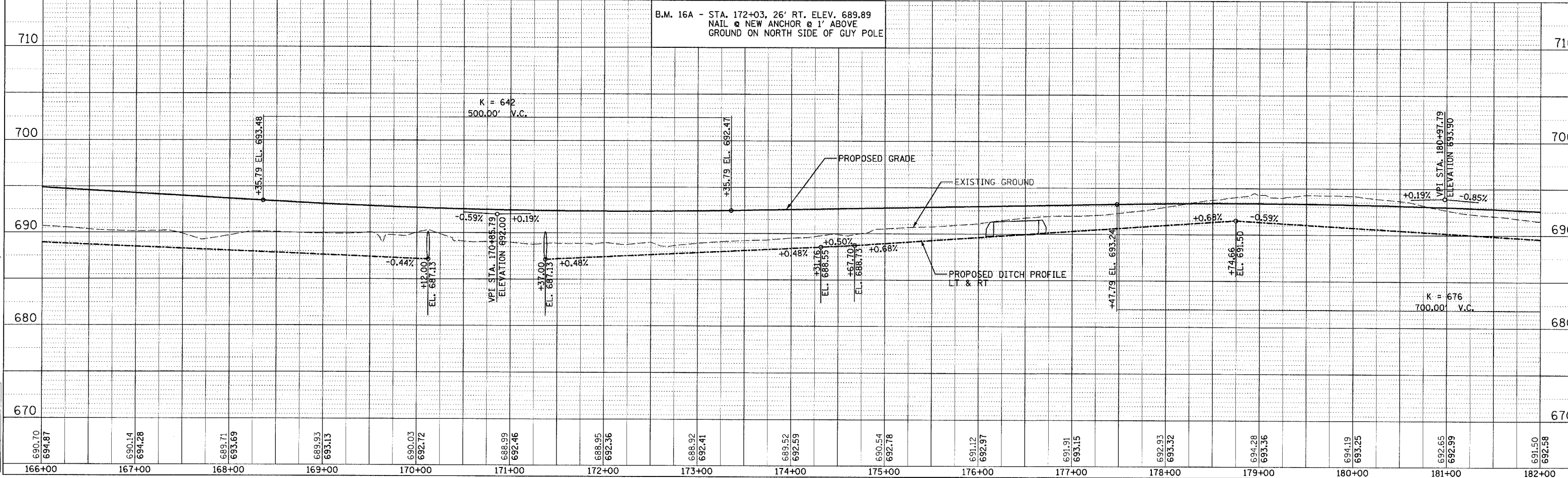
PROP. CURVE CURV6
 PI STA. = 187+49.01
 $\Delta = 6^\circ 08' 32''$ (RT)
 $D = 0^\circ 29' 54''$
 $R = 11,500.00'$
 $T = 617.00'$
 $L = 1,232.82'$
 $E = 16.54'$
 $\theta = N/A$
 P.C. STA. = 181+32.00
 P.T. STA. = 193+64.83

- X TREE REMOVAL
- BITUMINOUS SHOULDERS SUPERPAVE 8"
- 6" AGGREGATE SURFACE COURSE, TY. B

NOTES: (A) REFERS TO PROPOSED TYPICAL SECTIONS.

WORK TO BE DONE BY OTHERS BEFORE OR SIMULTANEOUSLY WITH THIS CONTRACT

B.M. 16A - STA. 172+03, 26' RT. ELEV. 689.89
 NAIL @ NEW ANCHOR @ 1' ABOVE GROUND ON NORTH SIDE OF GUY POLE



DATE: _____ BY: _____
 SURVEYED: _____
 PLOTTED: _____
 NOTE BOOK: _____
 NO. _____
 HANSON PROFESSIONAL SERVICES INC. 2005