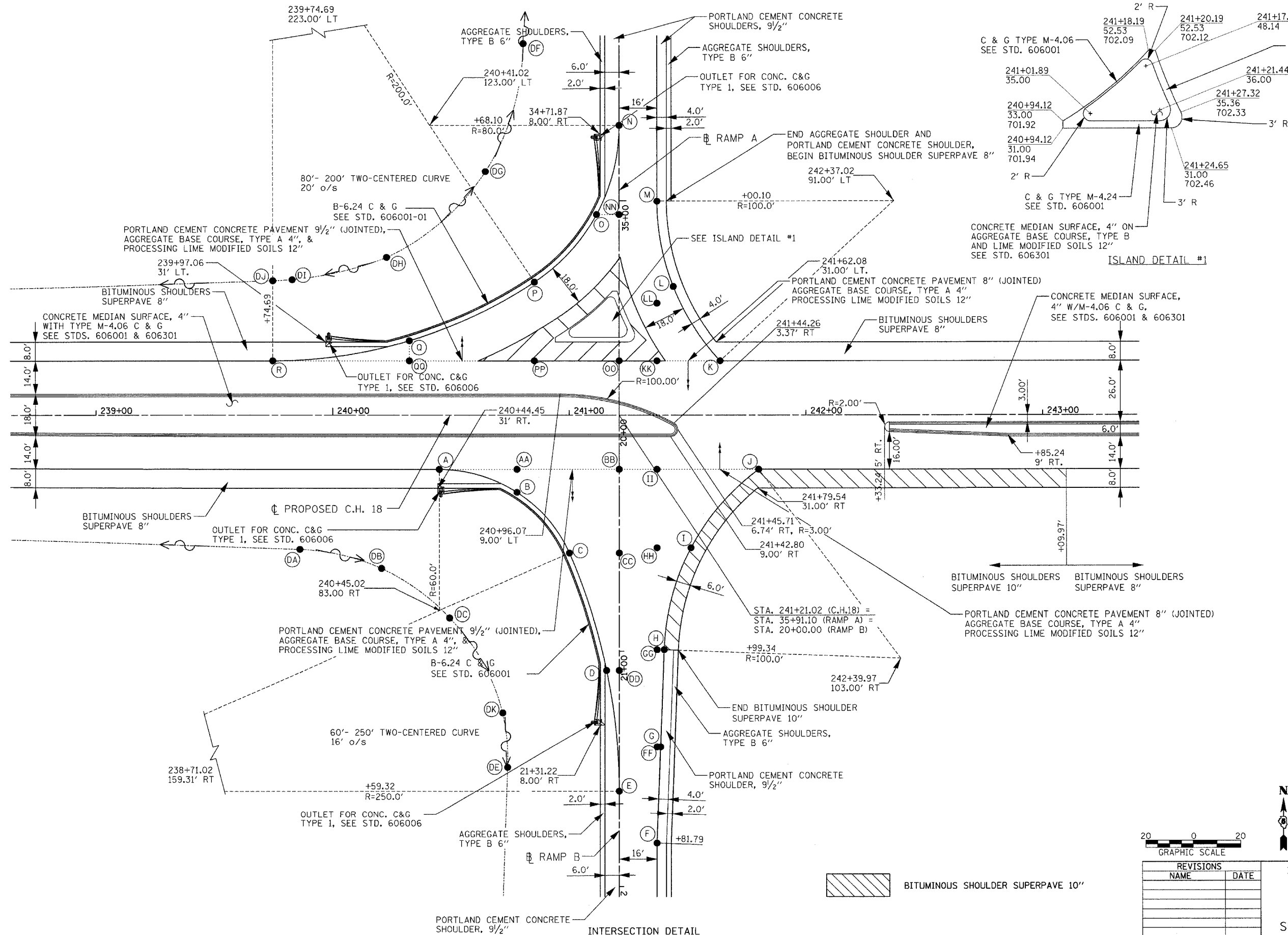
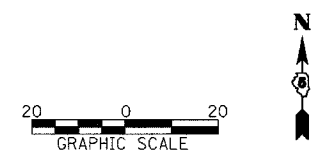


F.A.S. RTE.	SECTION	COUNTY	TOTAL SHEETS	SHEET NO.
642	99-00124-02-PV	COLES	229	68
STA.	TO STA.			
FED. ROAD DIST. NO.	ILLINOIS	FED. AID PROJECT		



RAMPS A & B			
* STATION	OFFSET	ELEVATION	
A	240+45.02	23.00	701.10
B	240+77.84	32.70	701.45
C	240+99.97	58.90	701.80
D	241+15.70	108.02	701.25
E	241+21.02	159.31	700.53
F	241+37.02	181.79	699.95
G	241+38.53	140.57	700.54
H	241+40.03	99.34	701.13
I	241+51.36	56.65	701.69
J	241+79.97	23.00	703.75
K	241+63.70	23.00	703.43
L	241+47.02	54.48	701.97
M	241+37.02	90.85	701.32
N	241+21.02	123.00	701.08
O	241+11.51	85.17	701.27
P	240+85.25	56.33	701.45
Q	240+32.42	31.51	700.69
R	239+74.69	23.00	699.86
AA	240+77.84	23.00	701.72
BB	241+21.02	23.00	702.58
CC	241+21.02	58.90	702.04
DD	241+21.02	108.02	701.30
FF	241+37.02	140.57	700.57
GG	241+37.02	99.34	701.19
HH	241+37.02	56.65	701.83
II	241+37.02	23.00	702.90
KK	241+37.02	23.00	702.34
LL	241+37.02	47.41	701.97
NN	241+21.02	85.17	701.56
OO	241+21.02	23.00	702.58
PP	240+85.24	23.00	701.86
QQ	240+32.42	23.00	700.86
DA	239+86.06	57.30	693.50
DB	240+20.55	65.42	692.74
DC	240+49.31	86.10	692.00
DK	240+71.78	125.97	691.62
DE	240+73.85	149.13	690.80
DF	240+80.54	156.93	692.47
DG	240+64.57	103.61	693.33
DH	240+22.78	66.84	693.54
DI	239+82.91	57.32	693.41
DJ	239+74.73	56.90	693.31

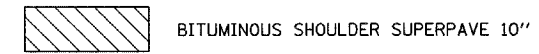
\*ALL STATIONS AND OFFSETS IN TABLE ARE REFERENCED TO COUNTY HIGHWAY 18



REVISIONS	
NAME	DATE

ILLINOIS DEPARTMENT OF TRANSPORTATION  
**INTERSECTION DETAIL**  
**RAMPS A & B WITH C.H. 18**  
**FAI-57, FAS 642**  
**SEC NO. 15-23K, 99-00124-02-PV**  
**COLES COUNTY, ILLINOIS**

SCALE: 1"=20'  
 DATE: 07/13/2005  
 DRAWN BY: JLW  
 CHECKED BY: SKM



LAYOUT: JLV/SKM 03/29/03  
 DRAWN: JLV 04/26/03  
 REVIEWED: SKM 07/13/05  
 FILE: 197-JOBS\97-00124-02-PV\15-23K\15-23K-01.dgn

Copyright Hanson Professional Services Inc. 2005