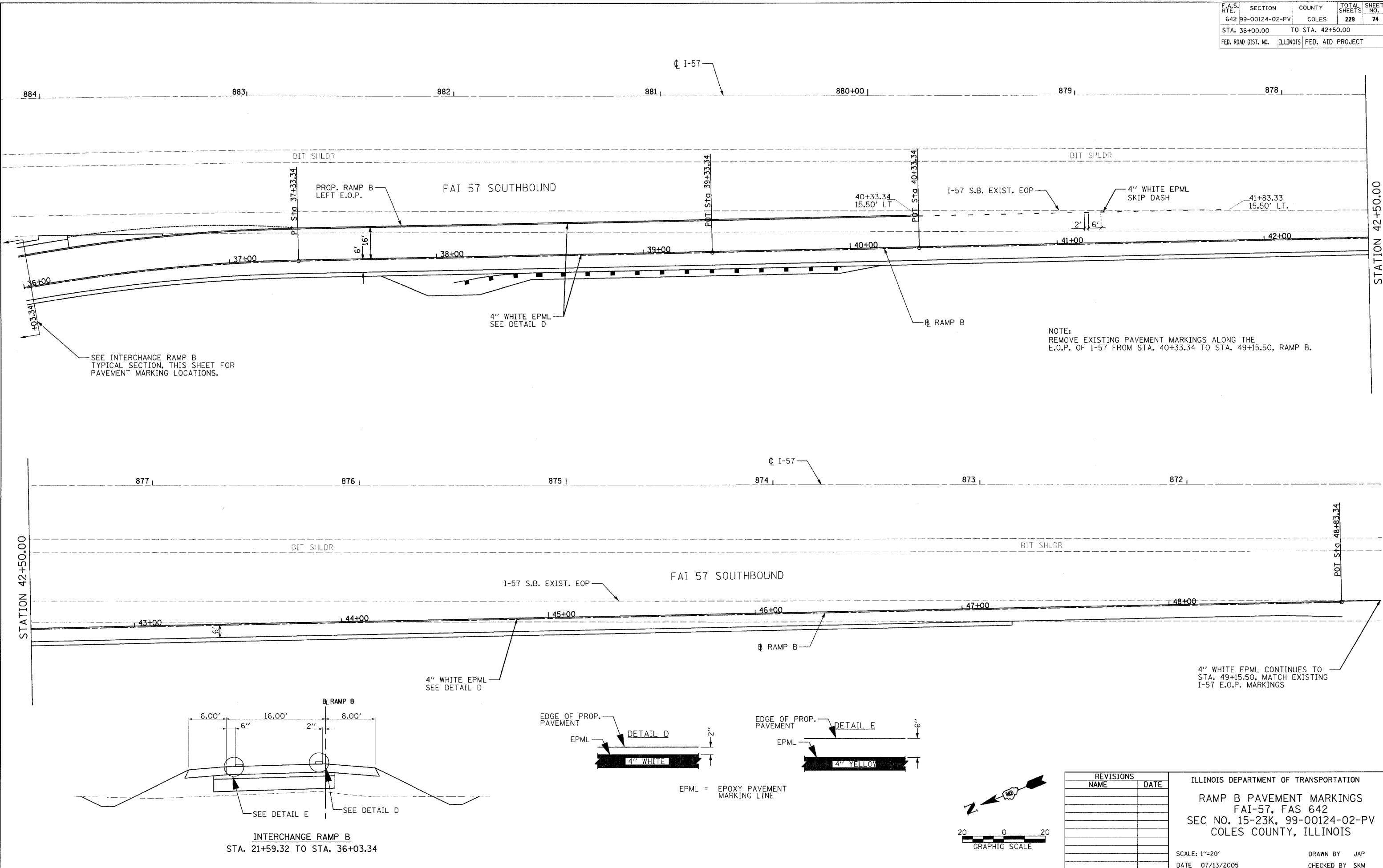


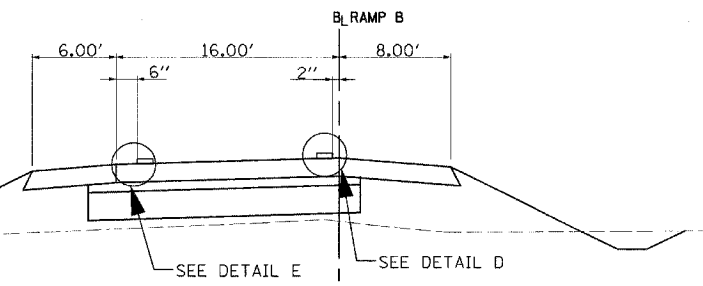
F.A.S. RTE.	SECTION	COUNTY	TOTAL SHEETS	SHEET NO.
642	99-00124-02-PV	COLES	229	74
STA. 36+00.00		TO STA. 42+50.00		
FED. ROAD DIST. NO.	ILLINOIS	FED. AID PROJECT		



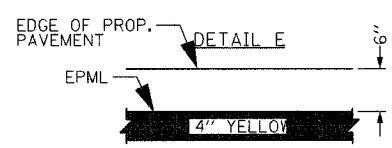
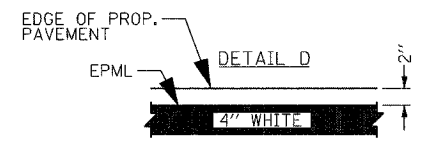
SEE INTERCHANGE RAMP B TYPICAL SECTION, THIS SHEET FOR PAVEMENT MARKING LOCATIONS.

NOTE:
REMOVE EXISTING PAVEMENT MARKINGS ALONG THE E.O.P. OF I-57 FROM STA. 40+33.34 TO STA. 49+15.50, RAMP B.

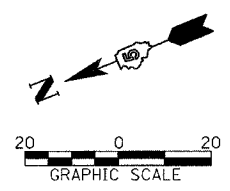
4" WHITE EPML CONTINUES TO STA. 49+15.50, MATCH EXISTING I-57 E.O.P. MARKINGS



INTERCHANGE RAMP B
STA. 21+59.32 TO STA. 36+03.34



EPML = EPOXY PAVEMENT MARKING LINE



REVISIONS	
NAME	DATE

ILLINOIS DEPARTMENT OF TRANSPORTATION
 RAMP B PAVEMENT MARKINGS
 FAI-57, FAS 642
 SEC NO. 15-23K, 99-00124-02-PV
 COLES COUNTY, ILLINOIS
 SCALE: 1"=20'
 DATE 07/13/2005
 DRAWN BY JAP
 CHECKED BY SKM



LAYOUT SKM 03/28/03
 DRAWN JAP 04/28/03
 DESIGNED SKM 01/15/04
 07/13/2005
 P:\97\JOBS\97s2022b\Civil\Sheet\c-504PVTB.dgn

© Copyright Hanson Professional Services Inc. 2005