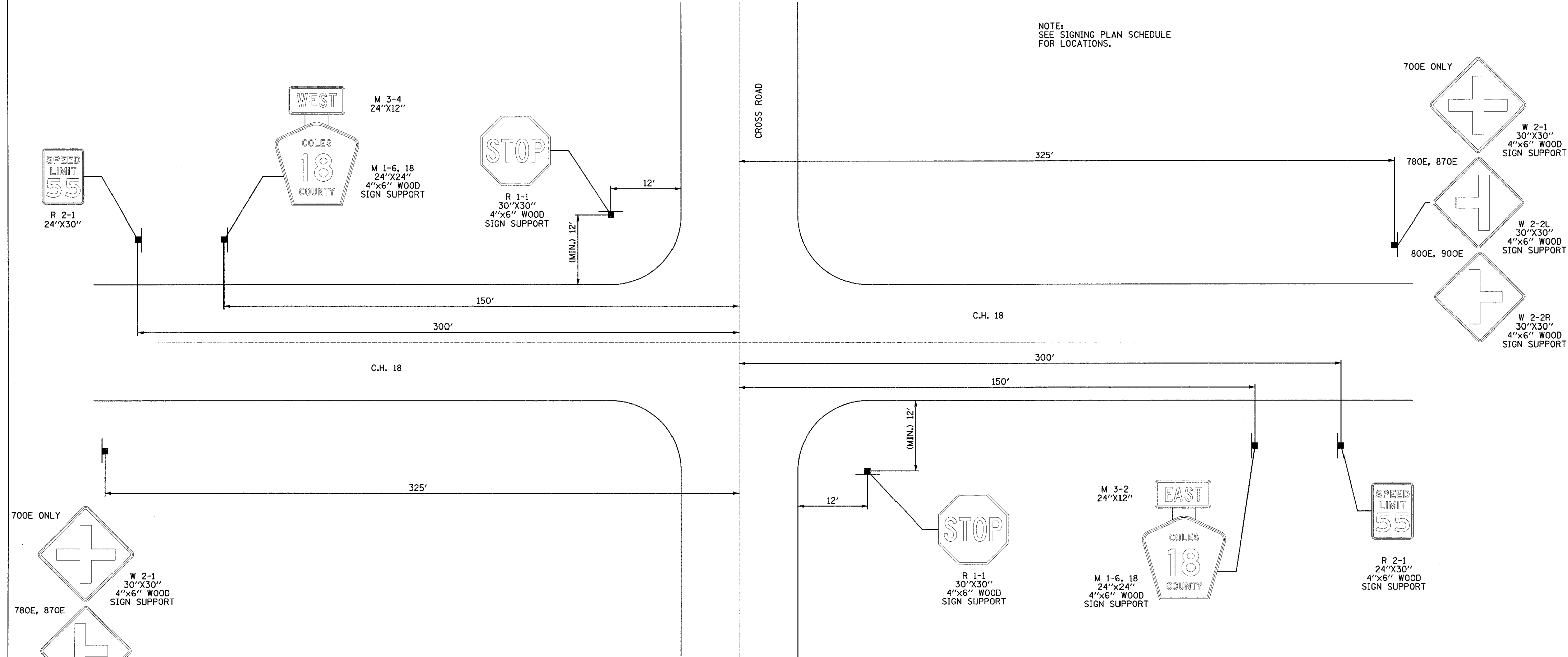


F.A.S. RTE.	SECTION	COUNTY	TOTAL SHEETS	SHEET NO.
642		COLES	229	84
STA.		TO STA.		
FED. ROAD DIST. NO.		ILLINOIS	FED. AID PROJECT	
• 99-00124-02-PV				

NOTE:
SEE SIGNING PLAN SCHEDULE
FOR LOCATIONS.



TYPICAL SIGN PLACEMENT @ INTERSECTION
SEE STANDARD 720006 FOR MORE INFORMATION



REVISIONS	
NAME	DATE

ILLINOIS DEPARTMENT OF TRANSPORTATION
SIGNING PLANS
FAI-57, FAS 642
SEC NO. 15-23K, 66-00124-02-PV
COLES COUNTY, ILLINOIS

SCALE: NOT TO SCALE
DATE 07/13/2005

DRAWN BY JAP
CHECKED BY SKM



© Copyright Hanson Professional Services Inc. 2005

LAYOUT	JAP	01/12/04
DRAWN	JAP	01/14/04
REVIEWED	SKM	01/11/05

07/13/2005
h3974085/974222bb/C.H.18/Sheet.c-92449.dgn