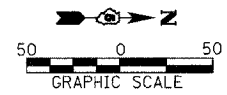


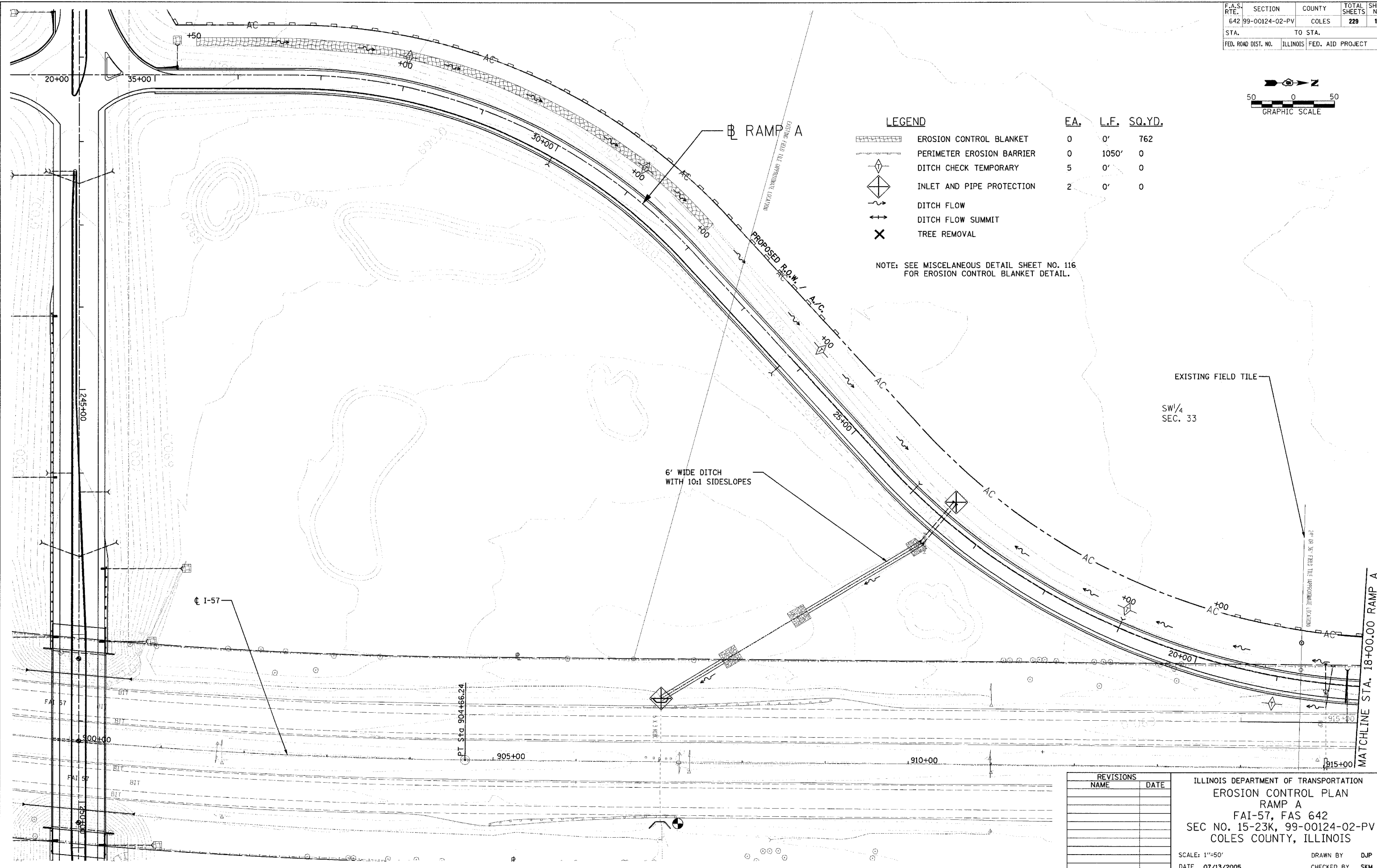
F.A.S. RTE.	SECTION	COUNTY	TOTAL SHEETS	SHEET NO.
642	99-00124-02-PV	COLES	229	100
STA.	TO STA.			
FED. ROAD DIST. NO.	ILLINOIS	FED. AID PROJECT		



**LEGEND**

	EA.	L.F.	SQ.YD.
	0	0'	762
	0	1050'	0
	5	0'	0
	2	0'	0

NOTE: SEE MISCELLANEOUS DETAIL SHEET NO. 116 FOR EROSION CONTROL BLANKET DETAIL.



© Copyright Hanson Professional Services Inc. 2005

LAYOUT: P:\P\54\03\28\03 07/13/2005  
 DRAWN: D.P. 02/28/03  
 REVISION: L.M. 05/07/03  
 I:\97\JOBS\97-62028\DWG\TAMP-A-ERO.dgn

REVISIONS	
NAME	DATE

ILLINOIS DEPARTMENT OF TRANSPORTATION  
 EROSION CONTROL PLAN  
 RAMP A  
 FAI-57, FAS 642  
 SEC NO. 15-23K, 99-00124-02-PV  
 COLES COUNTY, ILLINOIS

SCALE: 1"=50'  
 DATE 07/13/2005

DRAWN BY: DJP  
 CHECKED BY: SKM