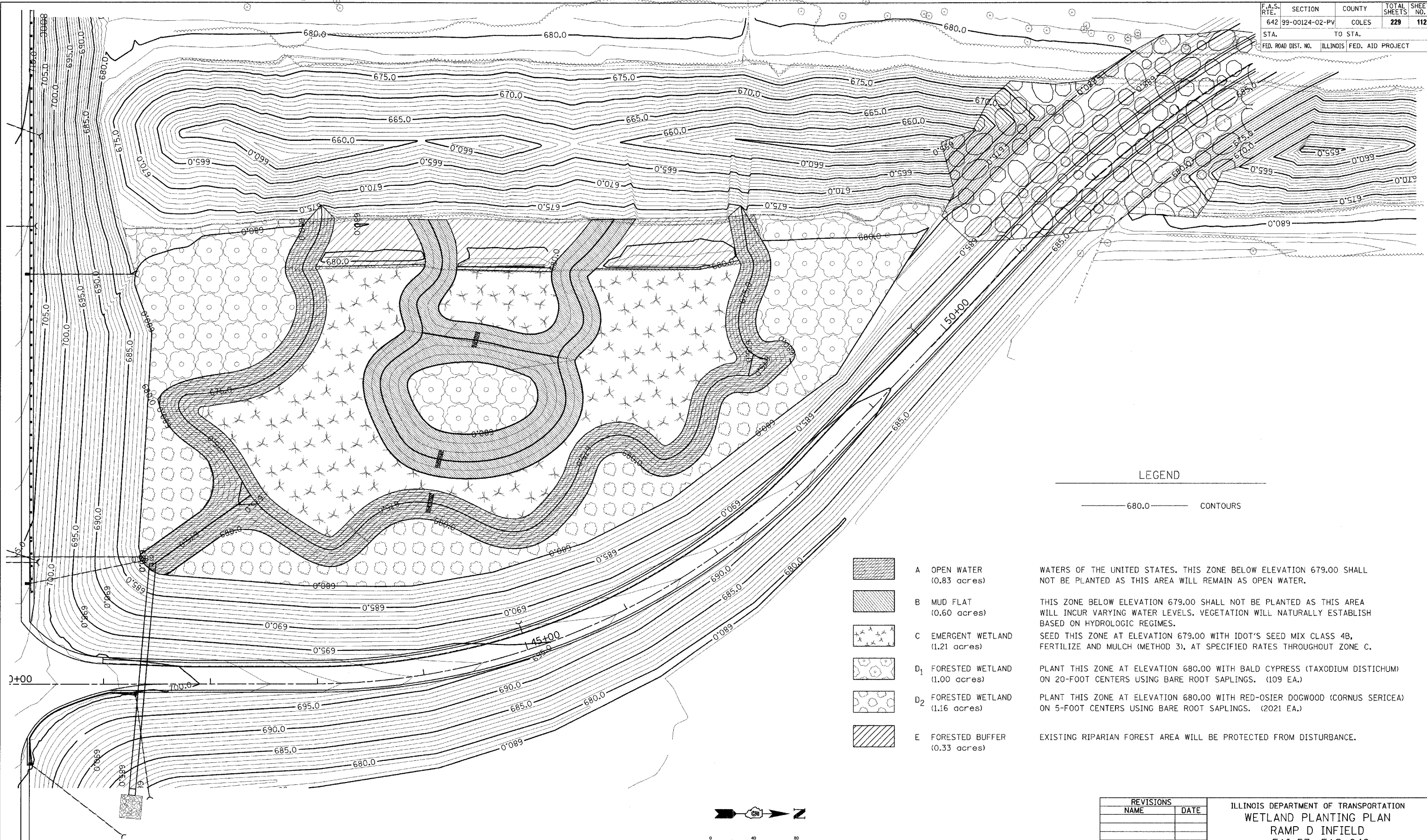
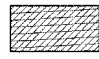
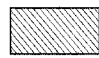
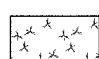


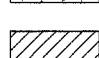


F.A.S. RTE.	SECTION	COUNTY	TOTAL SHEETS	SHEET NO.
642	99-00124-02-PV	COLES	229	112
STA.	TO STA.			
FED. ROAD DIST. NO.	ILLINOIS	FED. AID PROJECT		



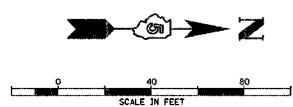
LEGEND

— 680.0 — CONTOURS

-  A OPEN WATER (0.83 acres) WATERS OF THE UNITED STATES. THIS ZONE BELOW ELEVATION 679.00 SHALL NOT BE PLANTED AS THIS AREA WILL REMAIN AS OPEN WATER.
-  B MUD FLAT (0.60 acres) THIS ZONE BELOW ELEVATION 679.00 SHALL NOT BE PLANTED AS THIS AREA WILL INCUR VARYING WATER LEVELS. VEGETATION WILL NATURALLY ESTABLISH BASED ON HYDROLOGIC REGIMES.
-  C EMERGENT WETLAND (1.21 acres) SEED THIS ZONE AT ELEVATION 679.00 WITH IDOT'S SEED MIX CLASS 4B, FERTILIZE AND MULCH (METHOD 3), AT SPECIFIED RATES THROUGHOUT ZONE C.
-  D1 FORESTED WETLAND (1.00 acres) PLANT THIS ZONE AT ELEVATION 680.00 WITH BALD CYPRESS (TAXODIUM DISTICHUM) ON 20-FOOT CENTERS USING BARE ROOT SAPLINGS. (109 EA.)
-  D2 FORESTED WETLAND (1.16 acres) PLANT THIS ZONE AT ELEVATION 680.00 WITH RED-OSIER DOGWOOD (CORNUS SERICEA) ON 5-FOOT CENTERS USING BARE ROOT SAPLINGS. (2021 EA.)
-  E FORESTED BUFFER (0.33 acres) EXISTING RIPARIAN FOREST AREA WILL BE PROTECTED FROM DISTURBANCE.

REVISIONS	
NAME	DATE

ILLINOIS DEPARTMENT OF TRANSPORTATION
 WETLAND PLANTING PLAN
 RAMP D INFIELD
 FAI-57, FAS 642
 SEC NO. 15-23K, 99-00124-02-PV
 COLES COUNTY, ILLINOIS
 SCALE: 1"=40'
 DATE 07/13/2005
 DRAWN BY DJP
 CHECKED BY SKM



BENCHMARK 800C: STA. 250+81, 52' LT. ELEVATION 683.69 NAIL IN LONE FENCE POST NEAR S.W. CORNER OF WOODED AREA AROUND THE POND.

LAYOUT: RMS 01/12/04
 DRAWN: DJP 01/14/04
 REVIEWED: RMS 01/15/04
 07/13/2005
 15974085537_s202000.ctb\shemc-5201wet.dgn