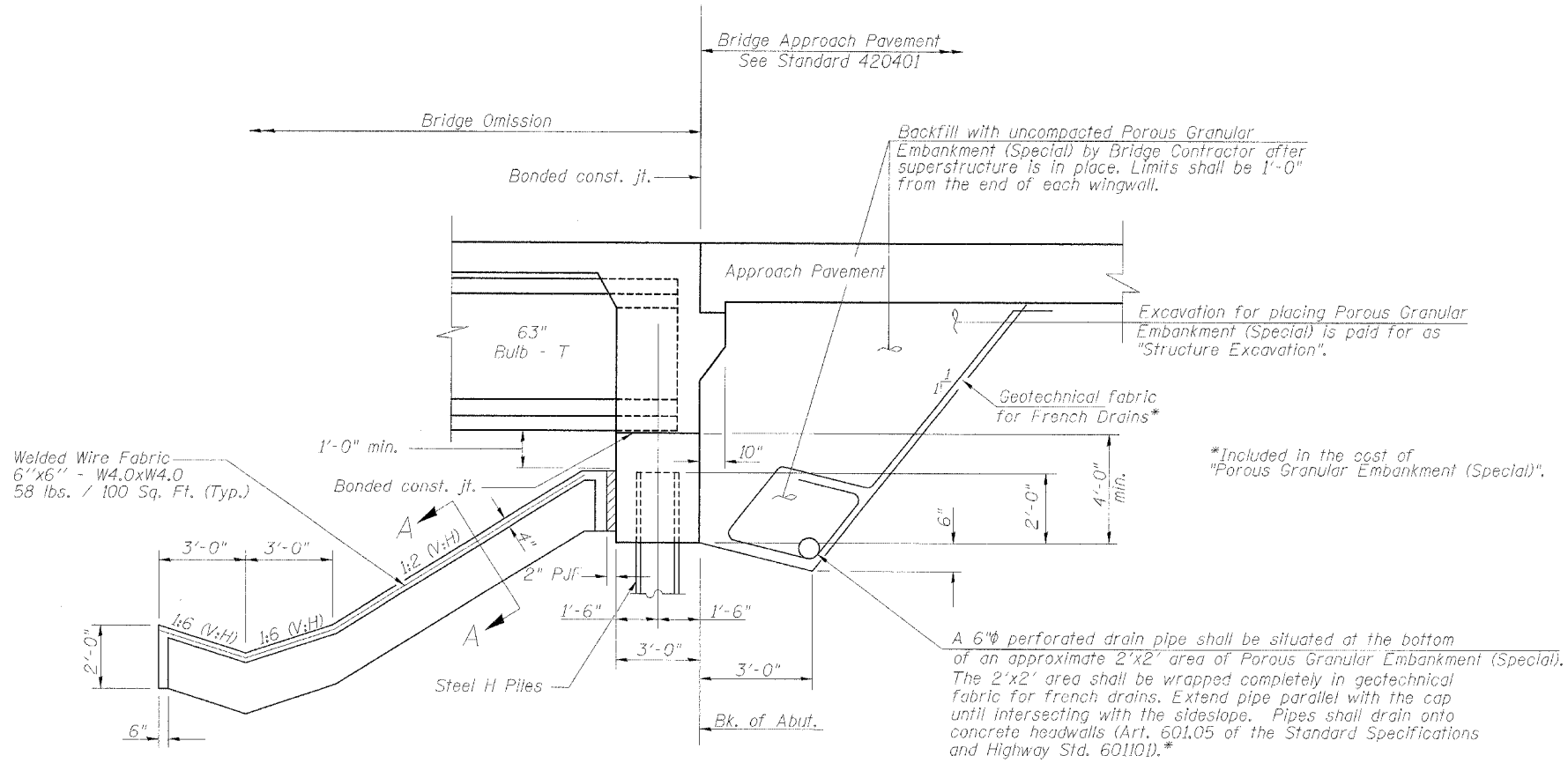
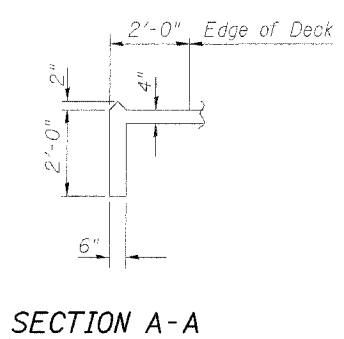


ROUTE NO.	SECTION	COUNTY	TOTAL SHEETS	SHEET NO.
C.H. 18	*	COLES	229	120
FED. ROAD DIST. NO. 7		BLANKS	FED. AID PROJECT	



SECTION THRU INTEGRAL ABUTMENT AND SLOPEWALL
(Dimensions @ Rt. <'s to Bk. of Abutment)

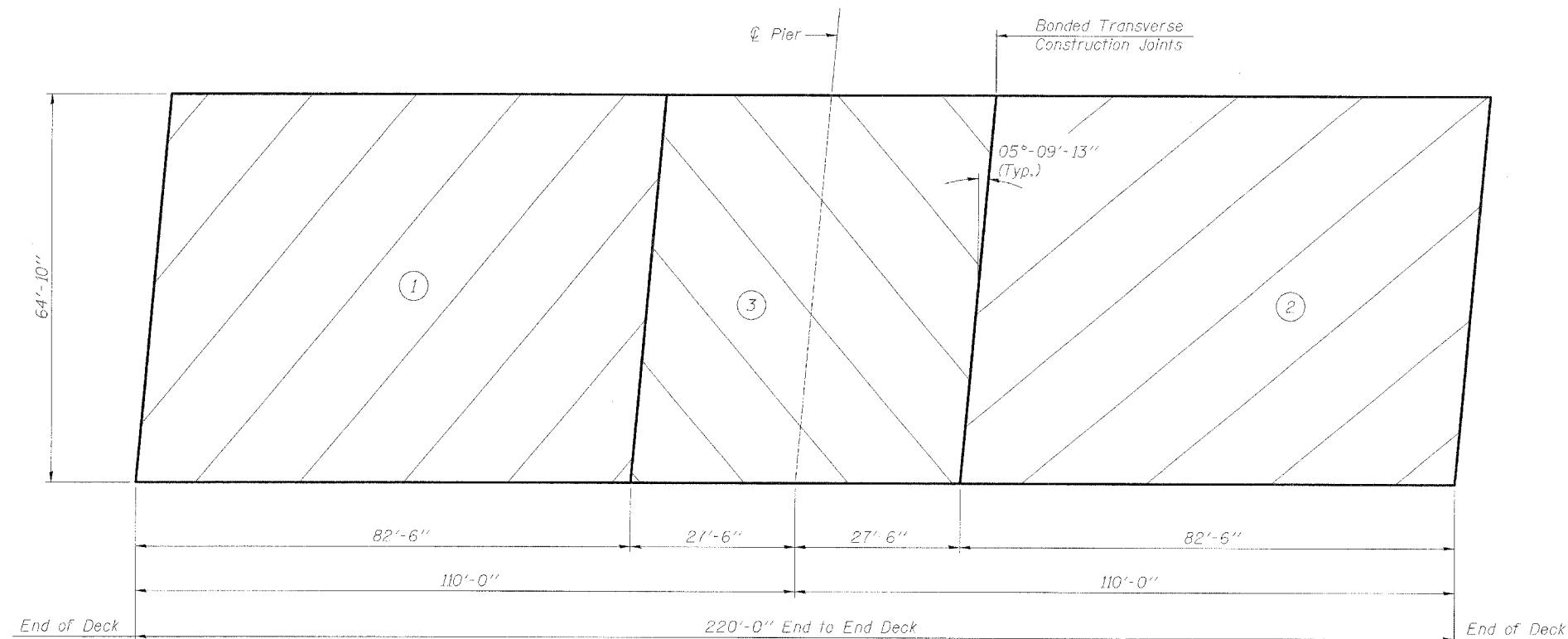


SECTION A-A

- GENERAL NOTES**
- Reinforcement bars shall conform to the requirements of AASHTO M 31 or M 322 Grade 60.
 - The contractor shall drive 1 HP12x53 test piles in a permanent location at each abutment and pier as directed by the Engineer before ordering the remainder of piles.
 - All construction joints shall be bonded.
 - Slope wall shall be reinforced with welded wire fabric 6"x6" - W4.0xW4.0, weighing 58 lbs. per 100 Sq. Ft.
 - The embankment configuration shown shall be the minimum embankment that must be constructed prior to construction of the abutments.
 - When the deck pour is stopped for the day at one or more of the transverse Bonded Construction Joints in the deck Pouring Sequence as shown, the next pour shall not be made until both of the following requirements are met:
 - At least 72 hours shall have elapsed from the end of the previous pour.
 - The concrete strength shall have attained a minimum flexural strength of 650 psi or a minimum compressive strength of 3500 psi.

TOTAL BILL OF MATERIAL

ITEM	UNIT	SUPER	SUB	TOTAL
Porous Granular Embankment (Special)	Cu. Yd.	-	415	415
Protective Coat	Sq. Yd.	1628	-	1628
Structure Excavation	Cu. Yd.	-	613	613
Concrete Structures	Cu. Yd.	-	198.4	198.4
Concrete Superstructure	Cu. Yd.	578.3	-	578.3
Bridge Deck Grooving	Sq. Yd.	1002	-	1002
Furnishing and Erecting Precast Prestressed Concrete Bulb-T-Beams 63"	Ft.	2178.5	-	2178.5
Reinforcement Bars, Epoxy Coated	Lbs.	112690	38550	151240
Slope Wall 4"	Sq. Yd.	-	690	690
Furnishing Steel Piles HP12x53	Ft.	-	3574	3574
Driving Steel Piles	Ft.	-	3574	3574
Test Pile Steel HP12x53	Each	-	3	3
Name Plates	Each	-	1	1
Bar Splicers	Each	122	-	122



DECK POURING SEQUENCE
The concrete deck segments shall be poured in the numerical order shown above.

STATION 249+25.29
BUILT 20__ BY
STATE OF ILLINOIS
F.A.S. RT. 642 SEC. 99-00124-02-PV
LOADING HS20-44
STR. NO. 015-0073

NAME PLATE
See Std. 515001

Corporate License Number 184-001-084
GENERAL NOTES & BILL OF MATERIAL
COUNTY HIGHWAY 18 OVER F.A.I. RTE. 57
SECTION 99-00124-02-PV
COLES COUNTY
STATION 249+25.29
STRUCTURE NUMBER 015-0073



LAYOUT: MWM 03/24/03
 DRAWN: DAP 03/25/03
 REVIEWED: JWM 05/12/03
 FILE: I:\DBS\97s2028b\Struc\57_Bridge\bridge.dgn
 9/7/2005