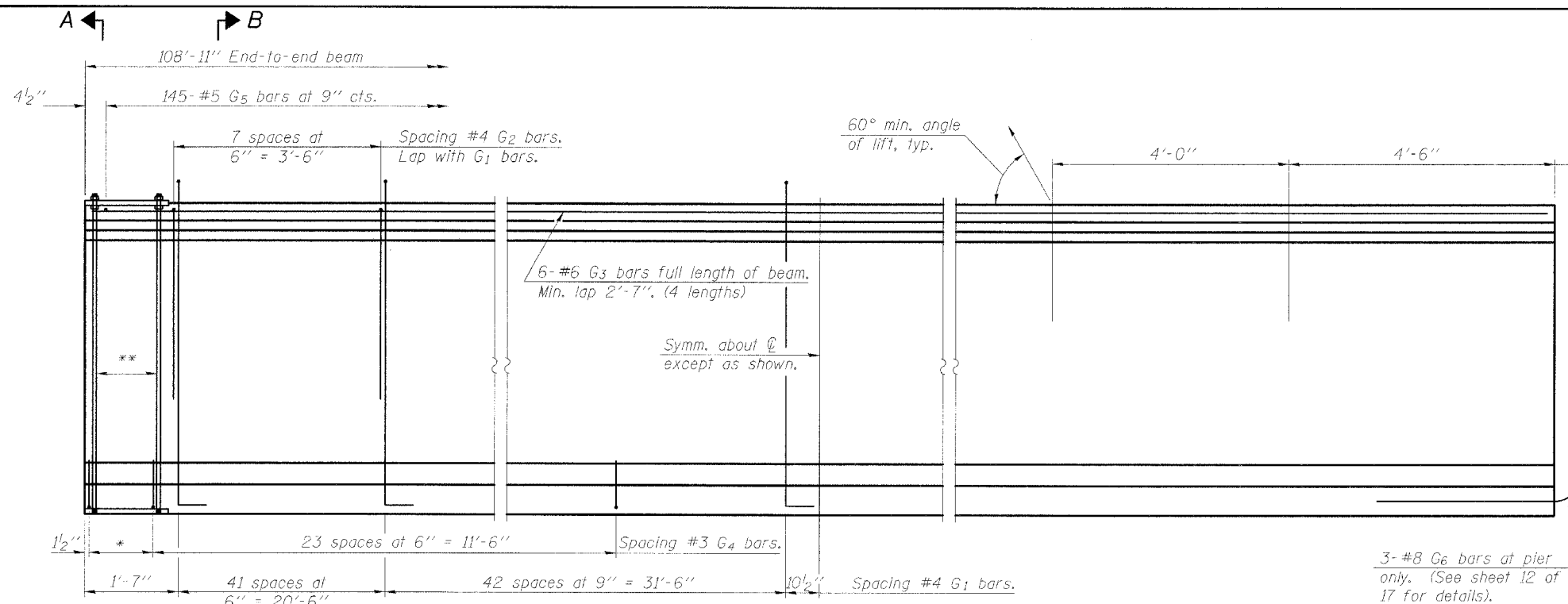


ROUTE NO.	SECTION	COUNTY	SHEETS	SHEET NO.
C.H. 18	#	COLES	229	129
FED. AID DEST. NO. 7 ILLINOIS FED. AID PROJECT-				

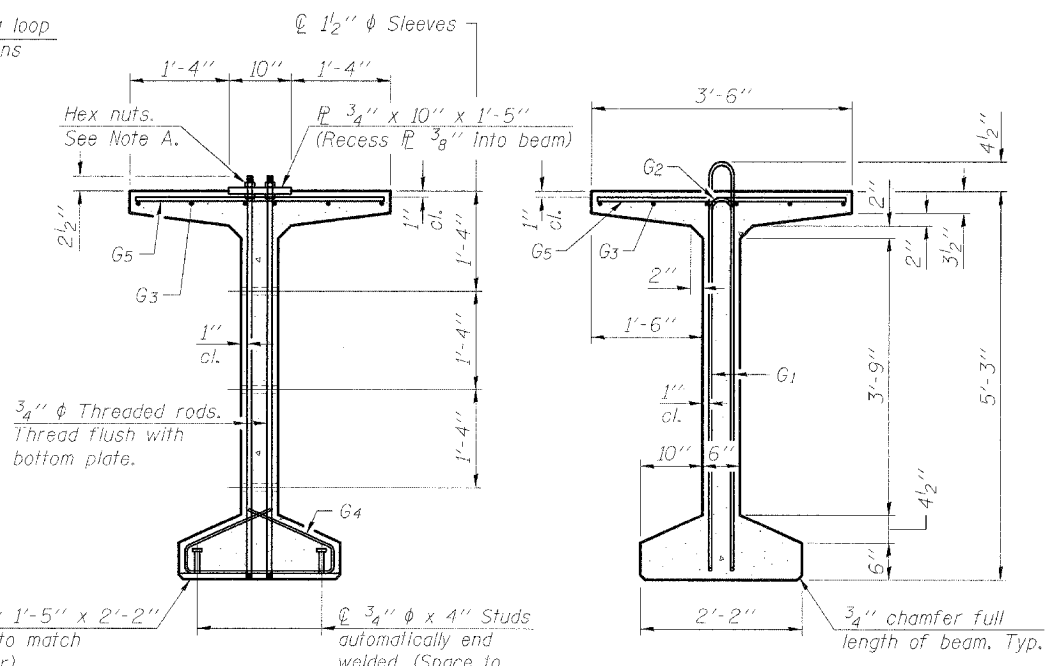


* 4 spaces at 3/4" = 1'-1"
** 5-3/4" φ threaded dowel rods at 3/4" cts., each face.

ELEVATION OF BEAM
(Showing reinforcement & dimensions)

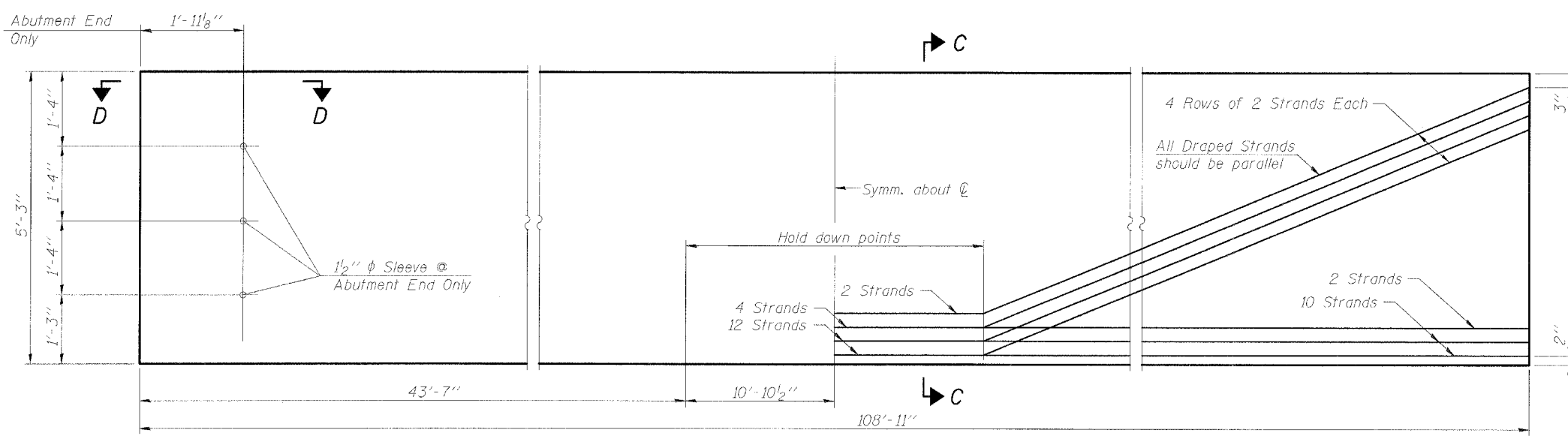
Note A:
Hex nuts (top and bottom) with lock washers (top). Only tighten sufficiently to compress lock washers.

1" x 1'-5" x 2'-2" (Bevel to match chamfer). φ 3/4" φ x 4" Studs automatically end welded. (Space to miss strands).

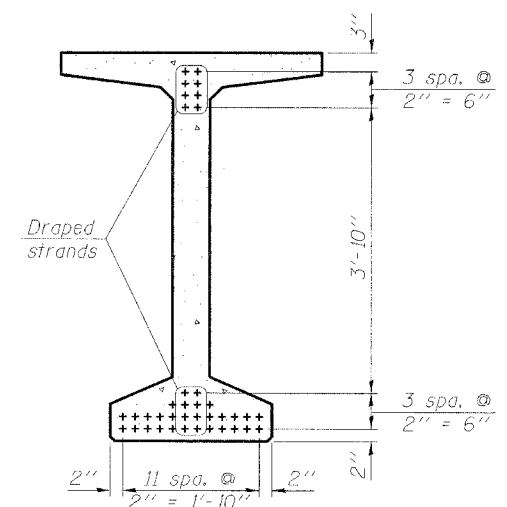


SECTION A-A

SECTION B-B



ELEVATION OF BEAM
(Showing prestressing steel)

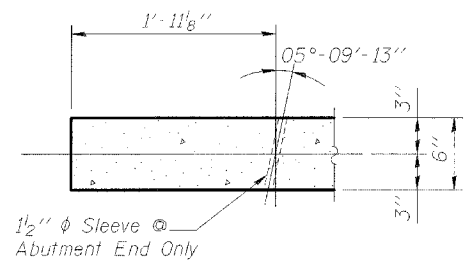


SECTION C-C

BAR LIST
ONE BEAM ONLY

Bar	No.	Size	Length	Shape
G ₁	169	#4	11'-11"	∩L
G ₂	16	#4	6'-2"	∩
G ₃	24	#6	29'-2"	—
G ₄	56	#3	4'-11"	∩
G ₅	145	#5	3'-4"	—
G ₆	3	#8	3'-9"	—

Notes:
See sheet 12 of 17 for additional detail and Bill of Material.
Required release strength, f'_{ci}, shall be 5000 psi.



SECTION D-D

Corporate License Number 184-001-084

63" PPC BULB T-BEAM
COUNTY HIGHWAY 18 OVER F.A.I. RTE. 57
SECTION 99-00124-02-PV
COLES COUNTY
STATION 249+25.29
STRUCTURE NUMBER 015-0073

Copyright Hanson Professional Services Inc. 2005



JOB#

97S2028E

DATE:

05/27/03

I:\97 JOBS\97-020286\Struct\57 Bridge\bridge.dgn 9/7/2005

LAYOUT	MM	03/24/03
DRAWN	DAP	03/25/03
REVIEWED	JWM	05/12/03