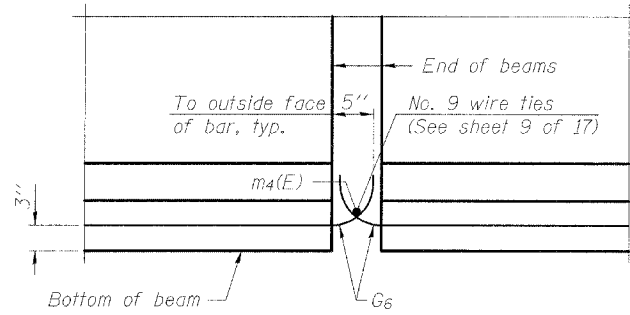


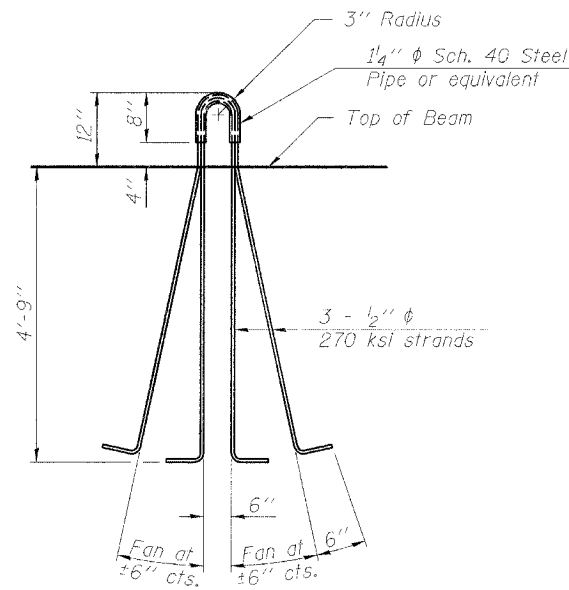
ROUTE NO.	SECTION	COUNTY	TOTAL SHEETS	SHEET NO.
C.H. 18	*	COLES	229	129A
FED. ROAD DIST. NO. 7	BUILDING	FED. AID PROJECT		

NOTES

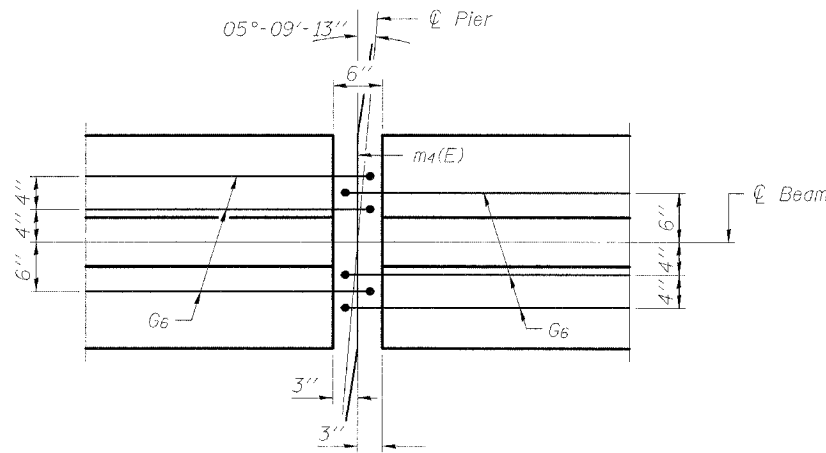
All Sleeves, reinforcing and Prestressing Steel, and other items which are cast into the Precast Concrete Bulb T-Beams shall be included in the contract unit price per foot of "Furnishing and Erecting Precast Prestressed Concrete Bulb T-Beams, 63 in."
 Prestressing steel shall be uncoated high strength, low relaxation 7-wire strand, Grade 270.
 The nominal diameter shall be 1/2" and the nominal cross-sectional area shall be 0.153 sq. in.
 Non-prestressing steel shall conform to AASHTO designation M-31 or M 322, Grade 60.
 A minimum 2 1/2" φ lifting pin shall be used to engage the lifting loops during handling.
 Reinforcement bars designated (E) shall be epoxy coated.
 Cut G⁶ bars when necessary to maintain 1/2" clearance.
 The bottom plates and studs shall be galvanized according to AASHTO M111 and ASTM A385.
 Threaded rods shall be ASTM F 1554 Grade 55.
 The cut strands at each beam end shall be given two coats of zinc dust spray or paint meeting the requirements of ASTM A 780. The zinc dust spray or paint shall be applied before corrosion appears and allowed to dry according to the manufacturer's specifications prior to another coat of zinc. A concrete sealer meeting the requirements of Section 587 of the Standard Specifications shall be applied to all portions of the I-beam or Bulb-T beam, except the top surface of the top flange and the bottom surface of the bottom flange, starting at each beam end and extending out a distance of 63 inches. The sealer shall be applied after visible crack growth has subsided. This work shall be performed by the producer and included with the cost of the beam.



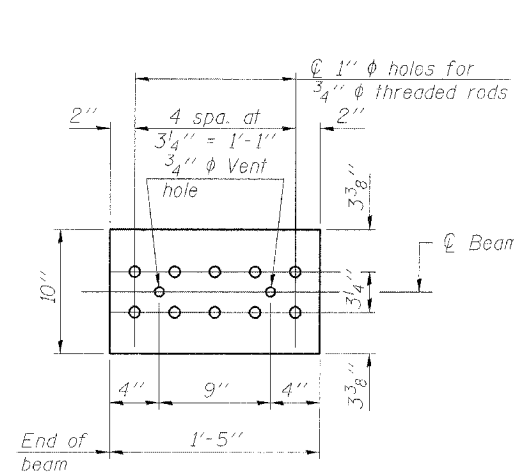
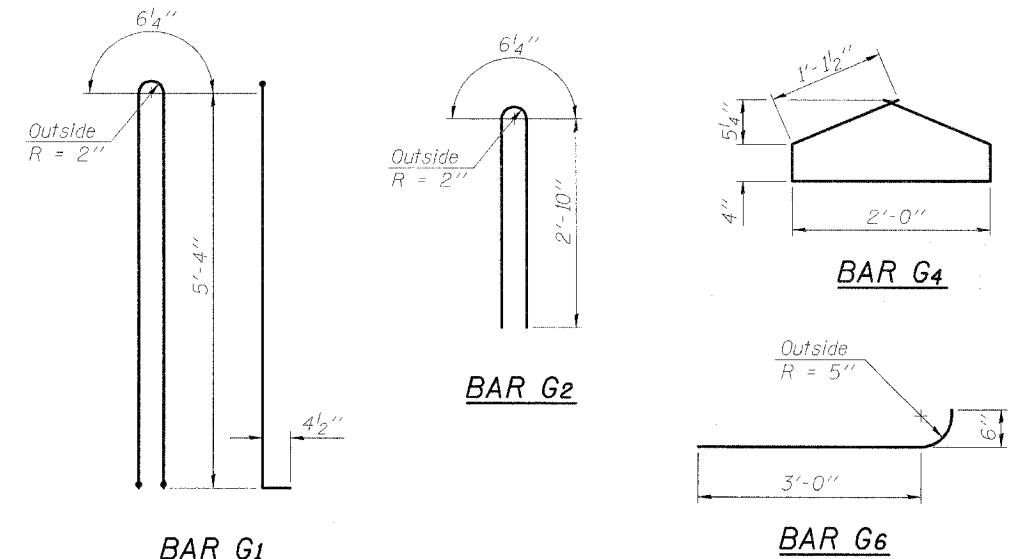
ELEVATION OF BEAM AT PIER



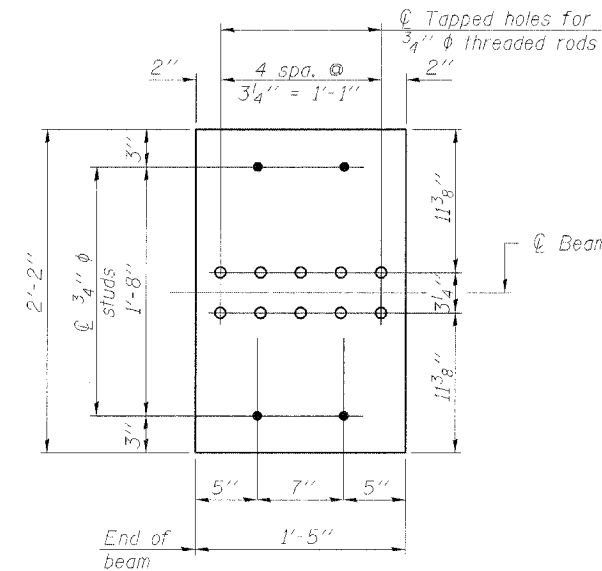
LIFTING LOOP DETAIL



PLAN OF BEAM AT PIER



TOP PLATE



BOTTOM PLATE

See bearing details for pinte hole locations when required.

BILL OF MATERIAL

Item	Unit	Total
Furnishing and Erecting Precast Prestressed Concrete Bulb T-Beams, 63"	Ft.	2178.5

Corporate License Number 184-001-084

63" PPC BULB T-BEAM DETAILS
 COUNTY HIGHWAY 18 OVER F.A.I. RTE. 57
 SECTION 99-00124-02-PV
 COLES COUNTY
 STATION 249+25.29
 STRUCTURE NUMBER 015-0073

© Copyright Hanson Professional Services Inc. 2005



DATE: 05/27/03
 JOB: 97S2028B

I:\9710655\972028B\51\rcv\57_Bridge\bridge.dgn 9/7/2005

LAYOUT	MM	03/24/03
DRAWN	DAP	03/25/03
REVIEWED	JWM	05/12/03