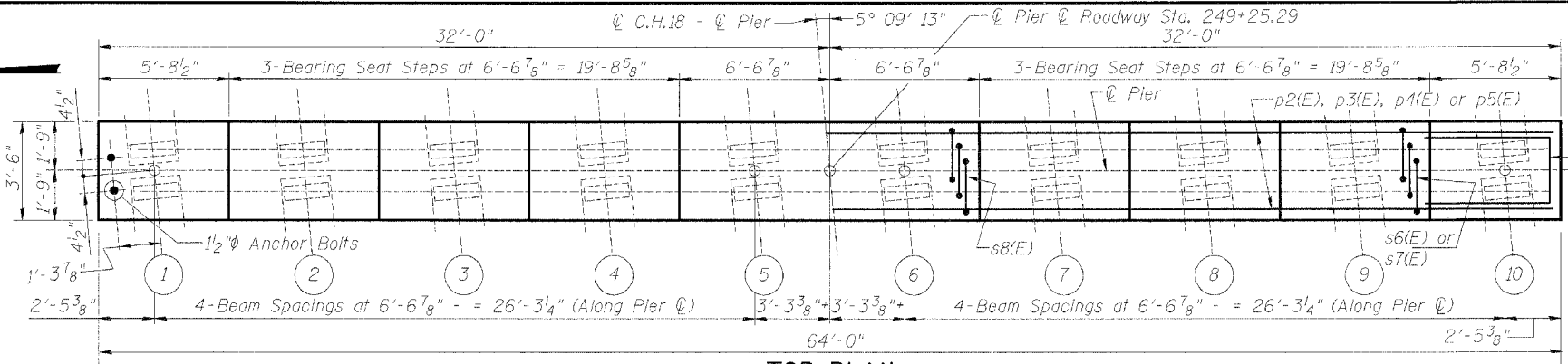


ROUTE NO. C.H. 18	SECTION *	COUNTY COLES	TOTAL SHEETS 229	SHEET NO. 131
PIER, ROAD DIST. NO. 7		ILLUMINATED	FED. AID PROJECT	

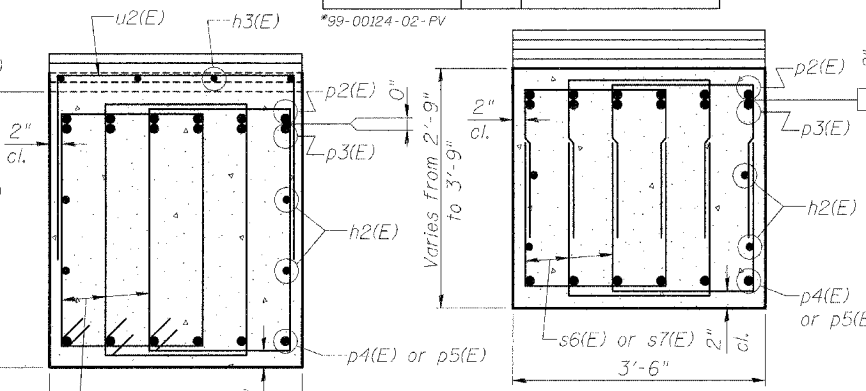
Note:
Space reinforcement in cap to miss anchor bolts.
Pour steps monolithically with cap.
Reinforcement bars indicated thus 6x2-#10 etc. Indicates 6 lines of bars with 2 lengths per line.

MIN. BAR LAPS

- #5 - 2'-2"
- #6 - 2'-7"
- #8 - 4'-6"
- #9 - 5'-9"
- #10 - 7'-3"



TOP PLAN



SECTION A-A
SECTION B-B

BILL OF MATERIAL

Bar	No.	Size	Length	Shape
h1(E)	16	#6	26'-2"	—
h2(E)	8	#5	32'-11"	—
h3(E)	4	#5	25'-11"	—
h4(E)	14	#9	27'-9"	—
n(E)	64	#10	12'-8"	C
p2(E)	12	#10	35'-6"	—
p3(E)	12	#10	18'-0"	—
p4(E)	6	#8	26'-8"	—
p5(E)	6	#8	41'-8"	—
s4(E)	40	#5	7'-9"	□
s5(E)	88	#5	9'-1"	□
s6(E)	36	#5	7'-1"	□
s7(E)	96	#5	7'-9"	□
s8(E)	225	#5	12'-1"	□
s9(E)	134	#8	7'-0"	C
s10(E)	67	#6	7'-10"	□
s11(E)	10	#5	6'-10"	□
s12(E)	40	#5	3'-4"	C
s13(E)	88	#5	4'-0"	C
s14(E)	128	#5	3'-3"	C
t(E)	52	#8	8'-6"	—
u1(E)	6	#6	8'-2"	—
u2(E)	27	#5	8'-2"	—
v3(E)	64	#10	19'-2"	—
v4(E)	54	#8	4'-2"	C
w(E)	20	#8	27'-7"	—
Structure Excavation	Cu. Yd.		127	
Concrete Structures	Cu. Yd.		12.8	
Reinforcement Bars, Epoxy Coated	Pound		27850	
Furnishing Steel Piles HP12x53	Ft.		1404	
Driving Steel Piles	Ft.		1404	
Test Pile St. HP12x53	Each		1	

BAR n(E), s9(E), & v4(E)

BARS s4(E) thru s13(E)

A & B DIMENSIONS

Bar	A	B
s4(E)	2'-4"	2'-8 1/2"
s5(E)	2'-4"	3'-4 1/2"
s6(E)	2'-3"	2'-5"
s7(E)	2'-3"	2'-9"
s10(E)	2'-8"	2'-7"
s11(E)	2'-6"	2'-2"
s12(E)	2'-8"	0'-8"
s13(E)	3'-4"	0'-8"

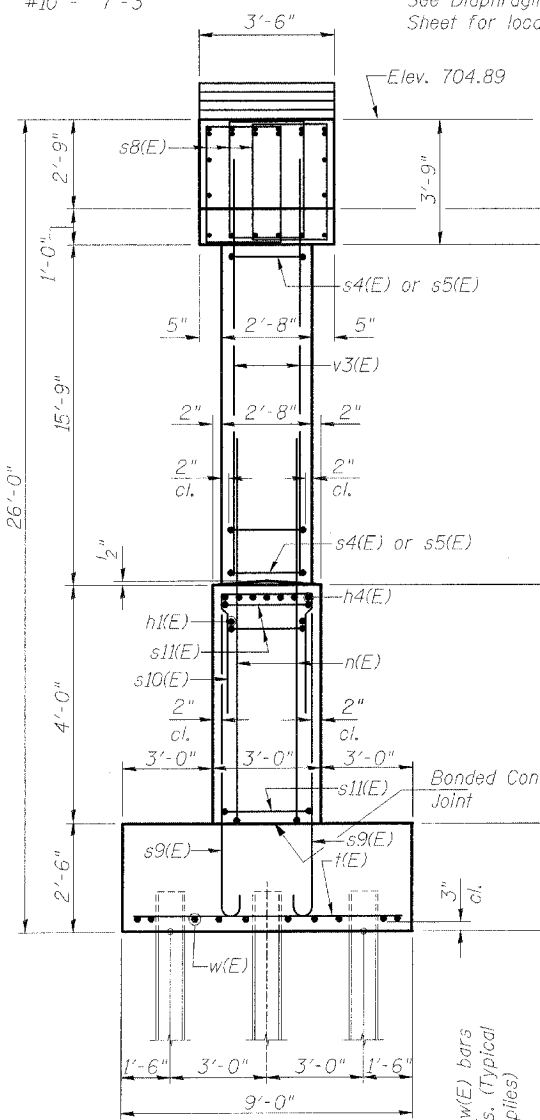
BAR s14(E)

BAR s8(E)

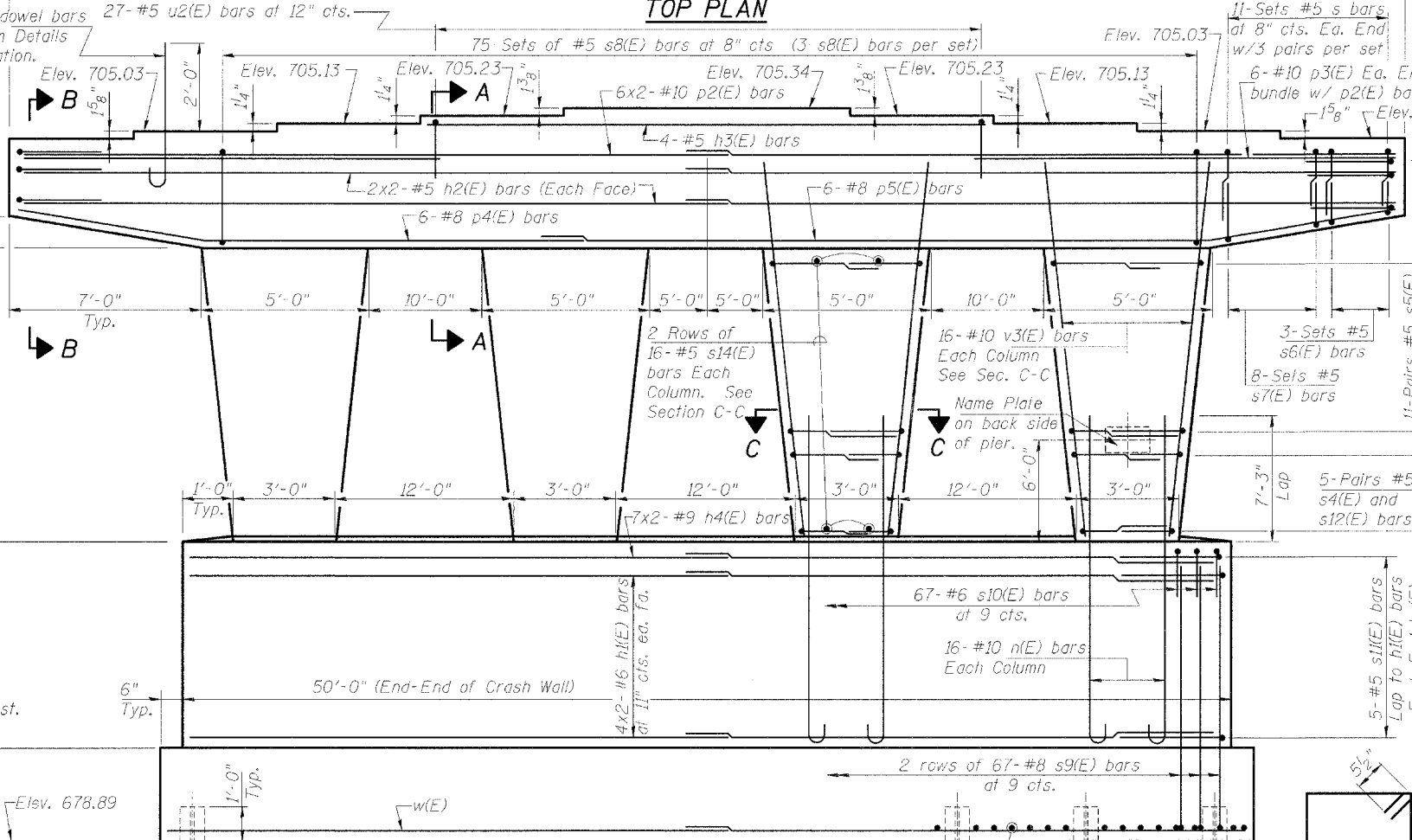
SECTION C-C

BAR u1(E) & u2(E)

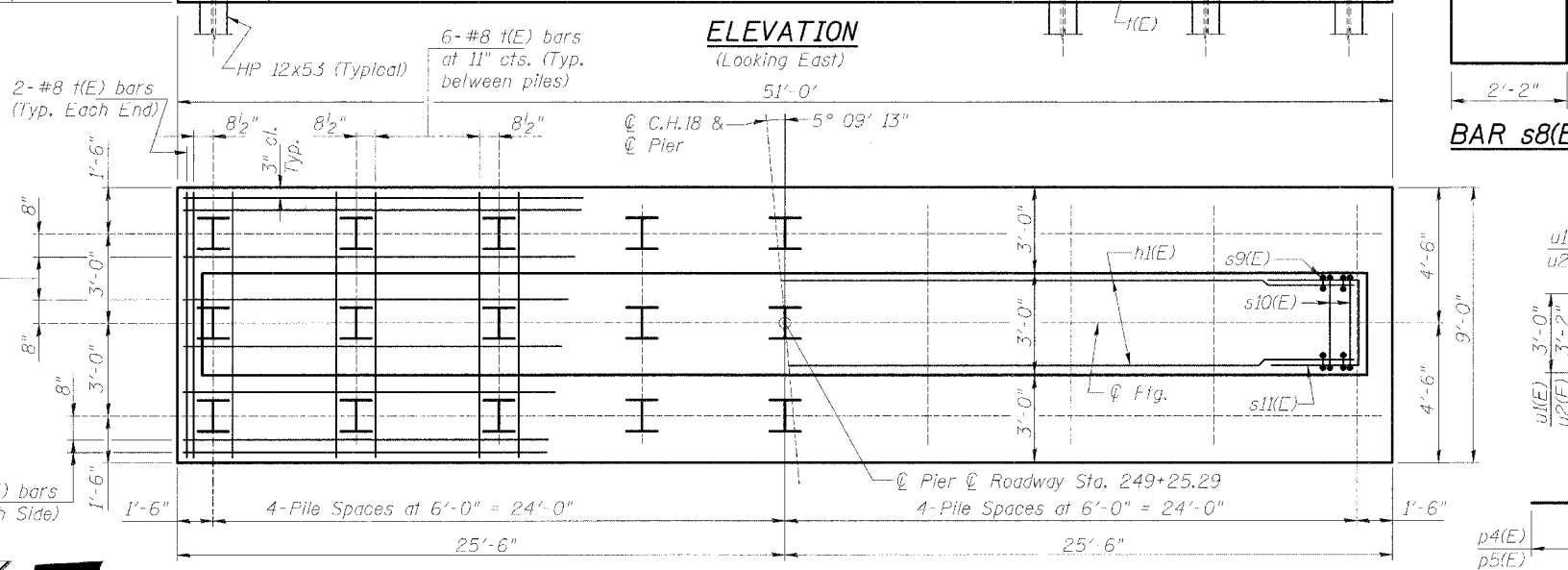
BAR p4(E) & p5(E)



END VIEW



ELEVATION (Looking East)



FOOTING PLAN

PILE DATA

Pile Type: HP 12x53
Capacity: Driven to Refusal
Estimated Length: 54'
No. Required: 27 (Includes 1 Test Pile)
Test Piles: 1

PIER
COUNTY HIGHWAY 18 OVER F.A.I. RTE. 57
SECTION 99-00124-02-PV
COLES COUNTY
STATION 249+25.29
STRUCTURE NUMBER 015-0073

Reinforcement Bars designated (E) shall be epoxy coated.
Corporate License Number 184-001-084



LAYOUT: MAM 03/24/03
 DRAWN: ROD 03/25/03
 REVIEWED: JWM 05/12/03
 1A97J065397s20288A.StructV157_Bridge.brdgedgr
 9/7/2005