

# T.12N.-R.8E., 3rd P.M., LAFAYETTE TWP.

SEE SHEET 2 OF 5



PROP. CURVE SONCURVE-4  
 PI STA. = 33+65.79  
 $\Delta = 53^\circ 54' 59''$  (RT)  
 $D = 6^\circ 44' 26''$   
 $R = 850.00'$   
 $T = 432.32'$   
 $E = 799.87'$   
 $P.C. STA = 29+33.48$   
 $P.T. STA = 37+33.34$

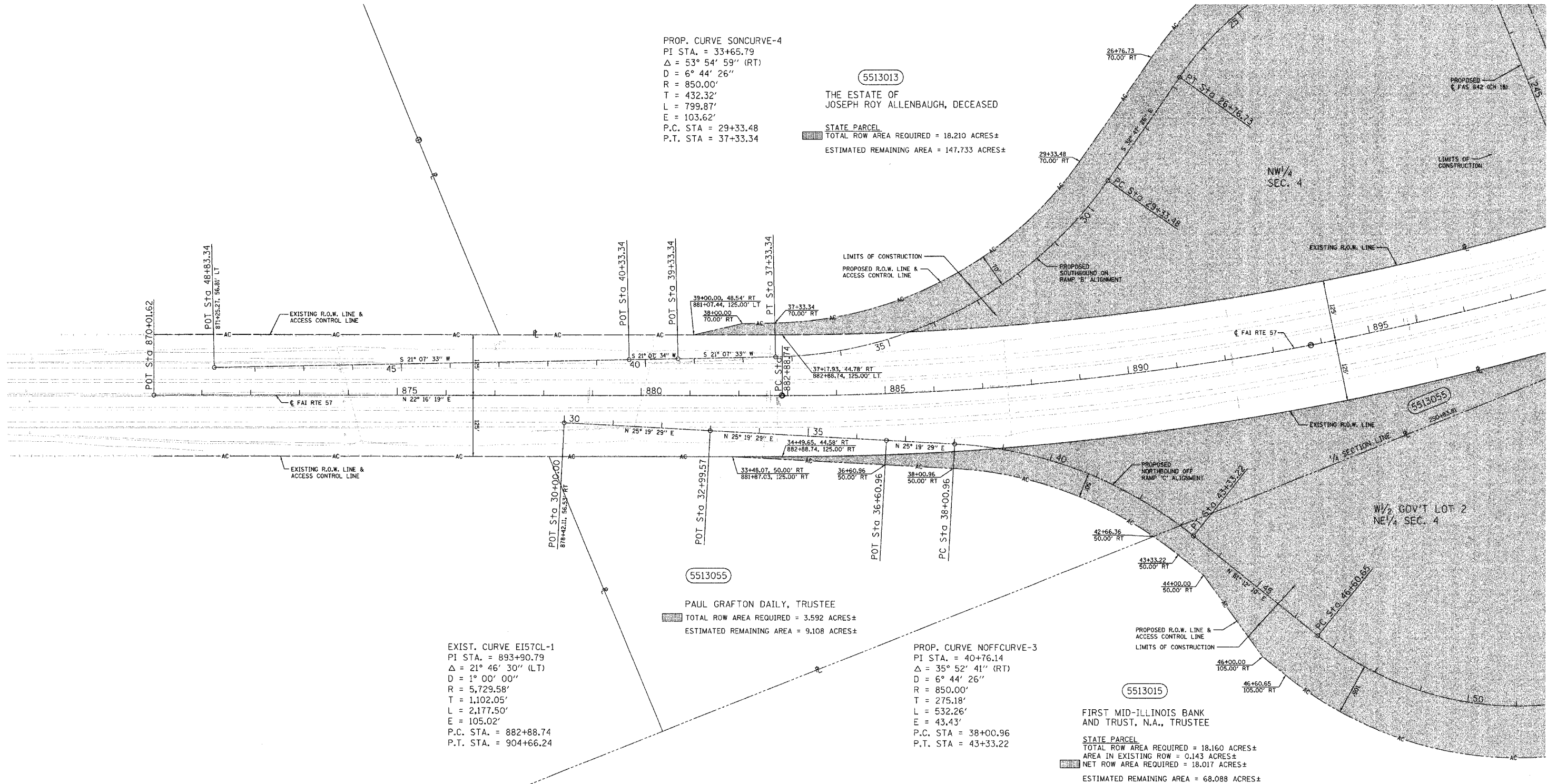
5513013  
 THE ESTATE OF  
 JOSEPH ROY ALLENBAUGH, DECEASED  
 STATE PARCEL  
 TOTAL ROW AREA REQUIRED = 18.210 ACRES±  
 ESTIMATED REMAINING AREA = 147.733 ACRES±

EXIST. CURVE EI57CL-1  
 PI STA. = 893+90.79  
 $\Delta = 21^\circ 46' 30''$  (LT)  
 $D = 1^\circ 00' 00''$   
 $R = 5,729.58'$   
 $T = 1,102.05'$   
 $L = 2,177.50'$   
 $E = 105.02'$   
 $P.C. STA. = 882+88.74$   
 $P.T. STA. = 904+66.24$

5513055  
 PAUL GRAFTON DAILY, TRUSTEE  
 TOTAL ROW AREA REQUIRED = 3.592 ACRES±  
 ESTIMATED REMAINING AREA = 9.108 ACRES±

PROP. CURVE NOFFCURVE-3  
 PI STA. = 40+76.14  
 $\Delta = 35^\circ 52' 41''$  (RT)  
 $D = 6^\circ 44' 26''$   
 $R = 850.00'$   
 $T = 275.18'$   
 $L = 532.26'$   
 $E = 43.43'$   
 $P.C. STA = 38+00.96$   
 $P.T. STA = 43+33.22$

5513015  
 FIRST MID-ILLINOIS BANK  
 AND TRUST, N.A., TRUSTEE  
 STATE PARCEL  
 TOTAL ROW AREA REQUIRED = 18.160 ACRES±  
 AREA IN EXISTING ROW = 0.143 ACRES±  
 NET ROW AREA REQUIRED = 18.017 ACRES±  
 ESTIMATED REMAINING AREA = 68.088 ACRES±



- NOTES:  
 1. TEMPORARY EASEMENTS ARE REQUIRED FOR ENTRANCE CONSTRUCTION AND EARTHWORK.  
 2. ALL BEARINGS ARE REFERENCED TO THE ILLINOIS STATE PLANE COORDINATE SYSTEM EAST ZONE DATUM OF 1983.

# T.12N.-R.8E., 3rd P.M., LAFAYETTE TWP.

REVISION		ILLINOIS DEPT. OF TRANSPORTATION RIGHT OF WAY PLAN
DATE	DESCRIPTION	
10-23-03	IDOT COMMENTS	ROUTE F.A.I. 57 SECTION 15-23K COUNTY COLES JOB# R-95-051-03 SEC 4-12-8 STA 870+00 TO STA 898+00 (FAI 57) DRAWN S.A.E. CHECKED D.E.H. SCALE: 1"= 100' SHEET NO. 226 OF 229
12-16-04	OWNER 5513013	