

T.13N.-R.8E., 3rd P.M., HUMBOLDT TWP.



SEE SHEET 2 OF 5

PROP. CURVE SOFFCURVE-3
 PI STA. = 21+44.89
 $\Delta = 44^\circ 09' 36''$ (RT)
 $D = 6^\circ 44' 26''$
 $R = 850.00'$
 $T = 344.80'$
 $L = 655.12'$
 $E = 67.27'$
 P.C. STA = 18+00.09
 P.T. STA = 24+55.21

5513026

JOHN R. LOWRY and GAIL A. LOWRY

TOTAL ROW AREA REQUIRED = 15.551 ACRES±
 ESTIMATED REMAINING AREA = 37.648 ACRES±

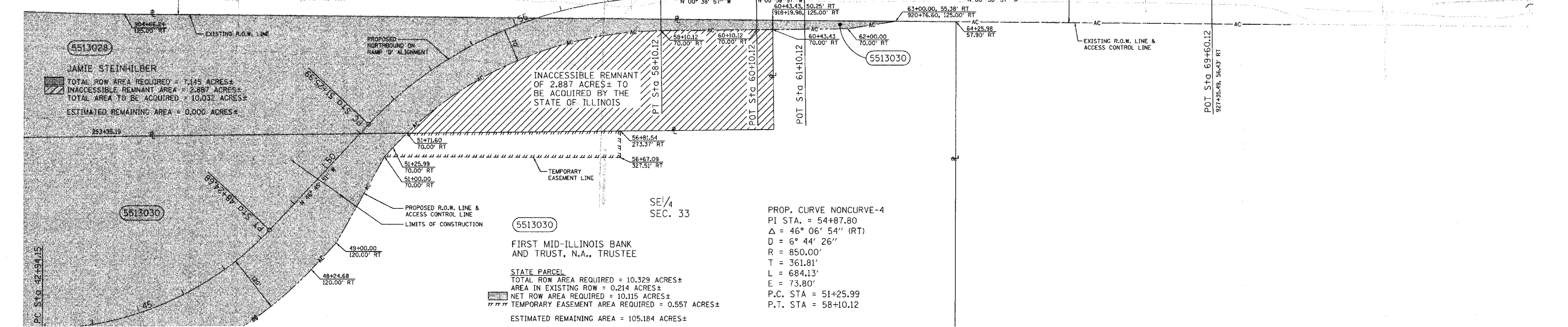
SW/4 SEC. 33

5513082

OPAL I. RATHE

TOTAL ROW AREA REQUIRED = 0.005 ACRES±
 ESTIMATED REMAINING AREA = 83.685 ACRES±

SEE SHEET 5 OF 5



5513028

JAMIE STEINHILBER
 TOTAL ROW AREA REQUIRED = 7.145 ACRES±
 INACCESSIBLE REMNANT AREA = 2.887 ACRES±
 TOTAL AREA TO BE ACQUIRED = 10.032 ACRES±
 ESTIMATED REMAINING AREA = 0.000 ACRES±

5513030

5513030

FIRST MID-ILLINOIS BANK AND TRUST, N.A., TRUSTEE

STATE PARCEL
 TOTAL ROW AREA REQUIRED = 10.329 ACRES±
 AREA IN EXISTING ROW = 0.214 ACRES±
 NET ROW AREA REQUIRED = 10.115 ACRES±
 TEMPORARY EASEMENT AREA REQUIRED = 0.557 ACRES±
 ESTIMATED REMAINING AREA = 105.184 ACRES±

SE/4 SEC. 33

PROP. CURVE NONCURVE-4
 PI STA. = 54+87.80
 $\Delta = 46^\circ 06' 54''$ (RT)
 $D = 6^\circ 44' 26''$
 $R = 850.00'$
 $T = 361.81'$
 $L = 684.13'$
 $E = 73.80'$
 P.C. STA = 51+25.99
 P.T. STA = 58+10.12

SEE SHEET 5 OF 5

- NOTES:
 1. TEMPORARY EASEMENTS ARE REQUIRED FOR RAMP CONSTRUCTION AND EARTHWORK.
 2. ALL BEARINGS ARE REFERENCED TO THE ILLINOIS STATE PLANE COORDINATE SYSTEM EAST ZONE DATUM OF 1983.

T.13N.-R.8E., 3rd P.M., HUMBOLDT TWP.

REVISION		ILLINOIS DEPT. OF TRANSPORTATION RIGHT OF WAY PLAN
DATE	DESCRIPTION	
10-23-03	IDOT COMMENTS	ROUTE F.A.I. 57 SECTION 15-23K COUNTY COLES JOB# R-95-051-03 SEC 33-13-8 STA 903+00 DRAWN S.A.E. SCALE: 1"= 100' TO STA 929+00 (FAI 57) CHECKED D.E.H. SHEET NO. 227 OF 229