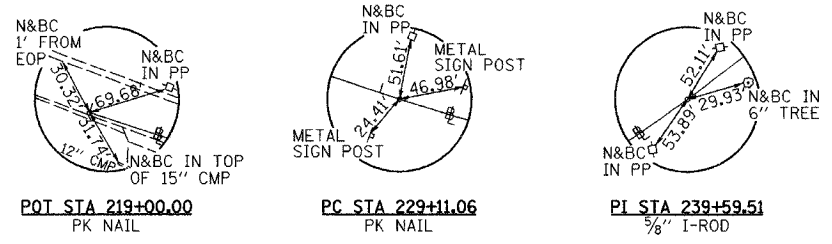


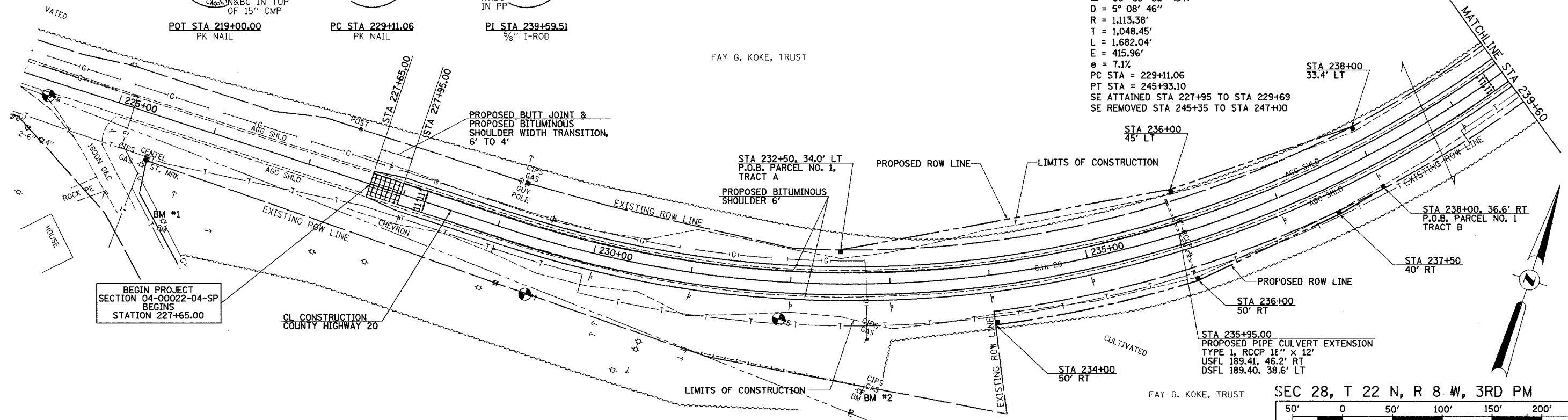
SEC 28, T 22 N, R 8 W, 3RD PM

F.A.S. RTE.	SECTION	COUNTY	TOTAL SHEETS	SHEET NO.
567	04-00022-04-FP	MASON	18	3
STA. 224+00		TO STA. 239+60		
FED. ROAD DIST. NO.		ILLINOIS FED. AID PROJECT		

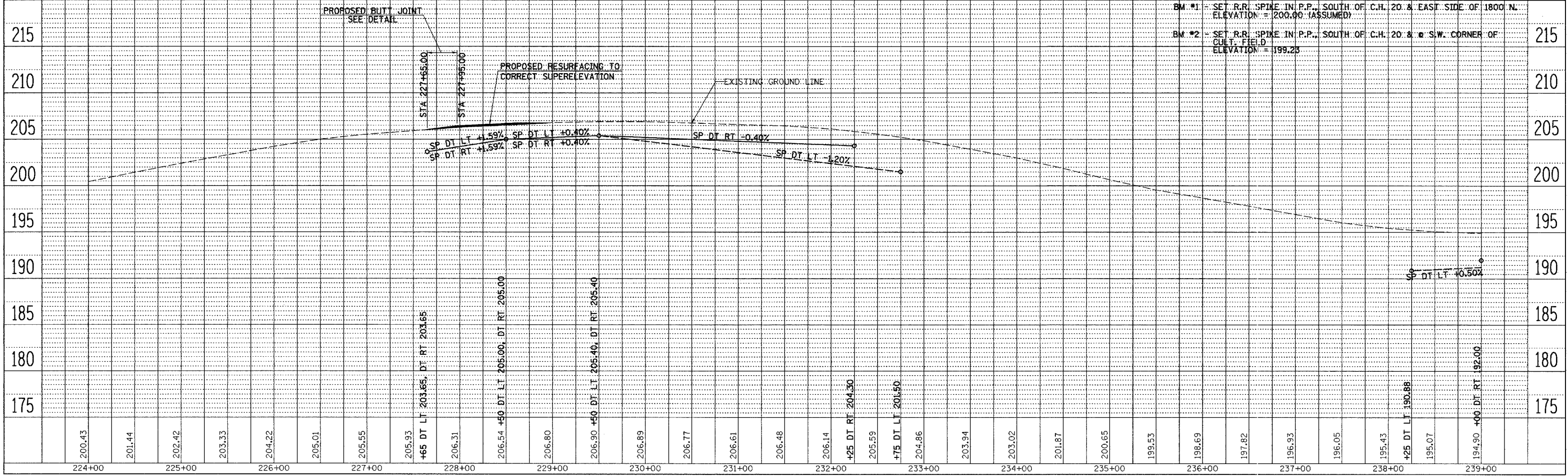
CONTRACT NO. 93400



PROP CURVE CH20-1
 PI STA = 239+59.51
 $\Delta = 86^\circ 33' 35''$ (LT)
 $D = 5^\circ 08' 46''$
 $R = 1,113.38'$
 $T = 1,048.45'$
 $L = 1,682.04'$
 $E = 415.96'$
 $e = 7.1\%$
 PC STA = 229+11.06
 PT STA = 245+93.10
 SE ATTAINED STA 227+95 TO STA 229+69
 SE REMOVED STA 245+35 TO STA 247+00



SEC 33, T 22 N, R 8 W, 3RD PM



ROADWAY PLAN & PROFILE COUNTY HIGHWAY 20 (FAS 567), STA 224+00 TO STA 239+60

PLAN	DATE
BY	
DATE	
BY	
DATE	
BY	
DATE	

PROFILE	DATE
BY	
DATE	
BY	
DATE	
BY	
DATE	

v:\2014\proj_07\06\2015_08_23_51.dwg