









F.A.S. RTE.	SECTION	COUNTY	TOTAL SHEETS	SHEET NO.
567	04-00022-04-FP	MASON	18	5
STA. 224+00		TO STA. 239+60		
FED. ROAD DIST. NO.	ILLINOIS FED. AID PROJECT			

**CONTRACT NO. 93400**

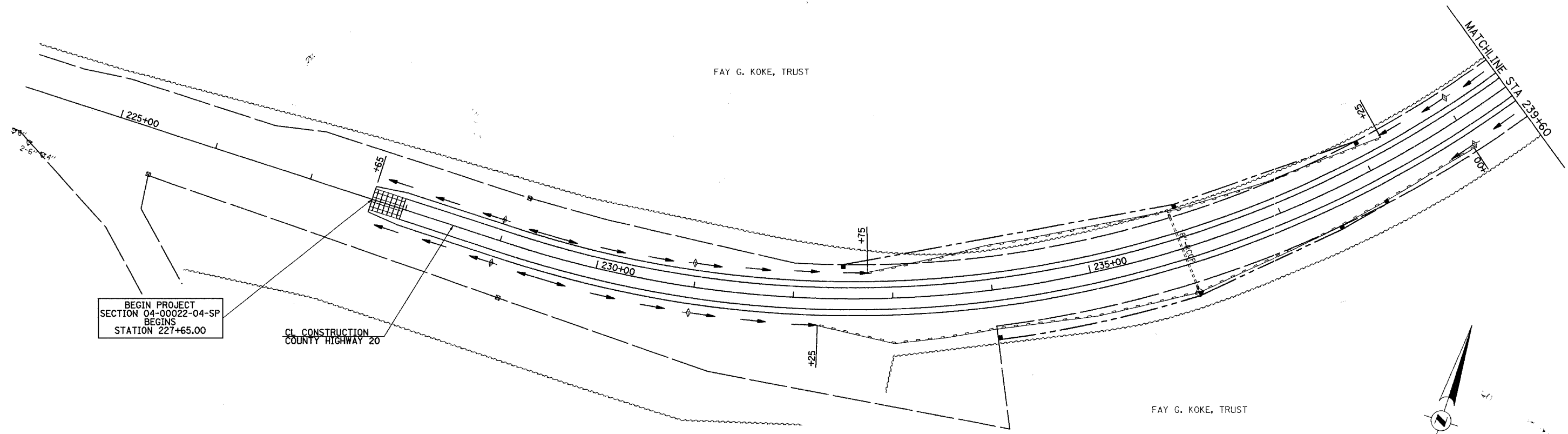
**LEGEND**

-  PERIMETER EROSION BARRIER
-  EROSION CONTROL BLANKET
-  AGGREGATE DITCH
-  TEMPORARY DITCH CHECK
-  INLET & PIPE PROTECTION
-  STANDARD DITCH - FLOW LINE AND DIRECTION
-  SPECIAL DITCH - FLOW LINE AND DIRECTION
-  PROPOSED RIPRAP PLACEMENT

SEC 28, T 22 N, R 8 W, 3RD PM

FAY G. KOKE, TRUST

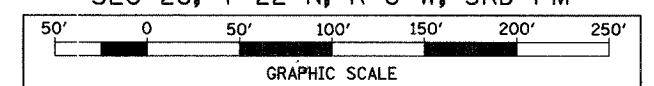
FAY G. KOKE, TRUST



BEGIN PROJECT  
SECTION 04-00022-04-SP  
BEGINS  
STATION 227+65.00

CL CONSTRUCTION  
COUNTY HIGHWAY 20

SEC 28, T 22 N, R 8 W, 3RD PM



REVISIONS	
NAME	DATE

ILLINOIS DEPARTMENT OF TRANSPORTATION  
EROSION CONTROL PLANS  
COUNTY HIGHWAY 20 (FAS 567)  
SECTION 04-00022-04-FP  
STA 224+00 TO STA 239+00

SCALE: \_\_\_\_\_ DATE \_\_\_\_\_ DRAWN BY JCG CHECKED BY JRB