

F.A.S. RTE.	SECTION	COUNTY	TOTAL SHEETS	SHEET NO.
567	04-00022-04-SP	MASON	18	1
FED. ROAD DIST. NO.	ILLINOIS	FED. AID PROJECT		

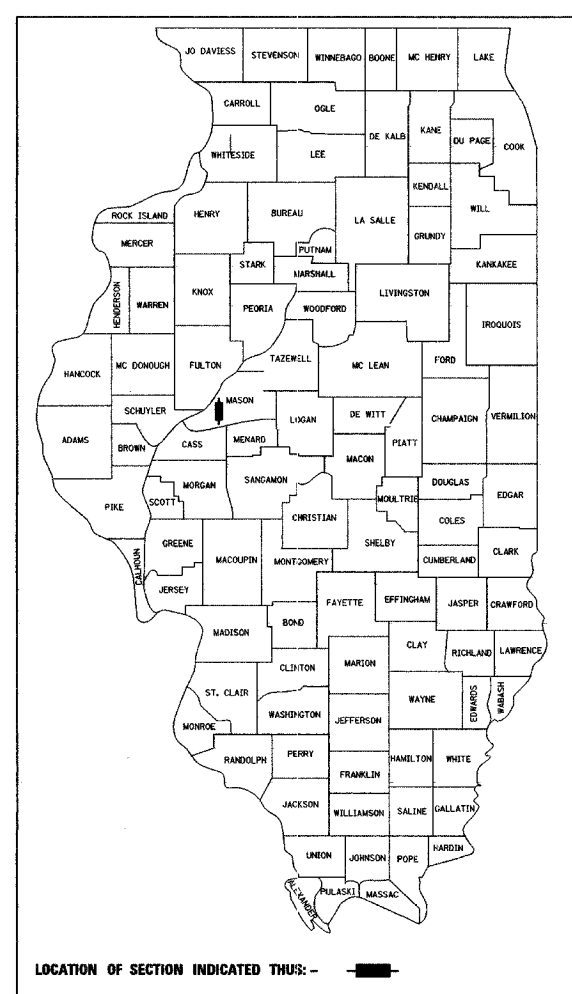
**STATE OF ILLINOIS
DEPARTMENT OF TRANSPORTATION
DIVISION OF HIGHWAYS**

**PLANS FOR PROPOSED
HAZARD ELIMINATION SAFETY PROGRAM
FAS 567**

SECTION NO. 04-00022-04-SP

**PROJECT NO. HS-567-(111)
MASON COUNTY
COUNTY HIGHWAY 20
C-96-203-05**

CONTRACT NO. 93400

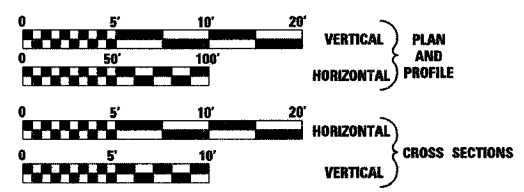
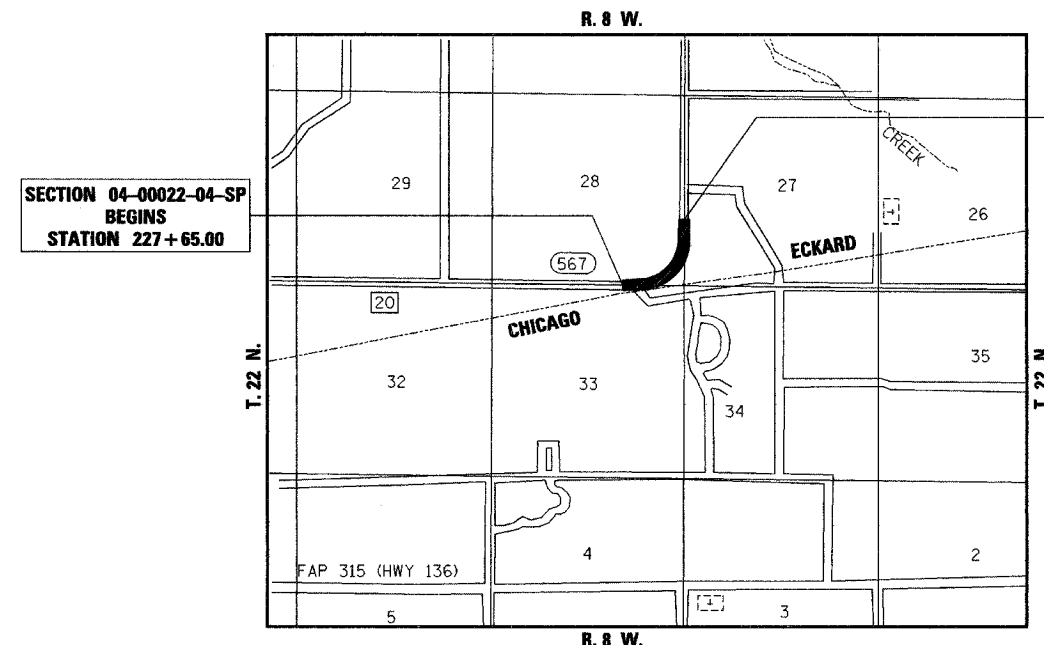


INDEX OF SHEETS

- 1 COVER SHEET
- 2 GENERAL NOTES, SUMMARY OF QUANTITIES, PROPOSED TYPICAL SECTION, AND BUTT JOINT DETAIL
- 3-4 PLAN AND PROFILE SHEETS
- 5-6 EROSION CONTROL PLANS
- 7-18 CROSS SECTIONS

REQUIRED STANDARDS

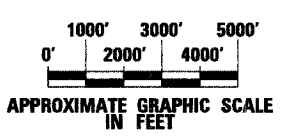
- 000001-04 SYMBOLS, ABBREVIATIONS, AND PATTERNS
- 280001-02 TEMPORARY EROSION CONTROL SYSTEMS
- 642001 SHOULDER RUMBLE STRIP
- 666001 RIGHT-OF-WAY MARKERS
- 701006-02 OFF-ROAD OPERATIONS, 2L, 2W, 4.5m (15') TO 600 mm (24") FROM PAVEMENT EDGE
- 701011-01 OFF-ROAD MOVING OPERATIONS, 2L, 2W, DAY ONLY
- 701201-02 LANE CLOSURE, 2L, 2W, DAY ONLY, FOR SPEEDS ≥ 45 MPH
- 701306-01 LANE CLOSURE, 2L, 2W, SLOW MOVING OPERATIONS DAY ONLY, FOR SPEEDS ≥ 45 MPH
- 701311-02 LANE CLOSURE, 2L, 2W, MOVING OPERATIONS - DAY ONLY
- 702001-05 TRAFFIC CONTROL DEVICES
- 780001-01 TYPICAL PAVEMENT MARKINGS
- 781001-02 TYPICAL APPLICATIONS RAISED REFLECTIVE PAVEMENT MARKERS



FULL SIZE PLANS HAVE BEEN PREPARED USING STANDARD ENGINEERING SCALES, REDUCED SIZE PLANS WILL NOT CONFORM TO STANDARD SCALES, IN MAKING MEASUREMENTS ON REDUCED PLANS, THE ABOVE SCALES MAY BE USED.

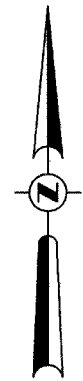
J.U.L.I.E.
JOINT UTILITY LOCATION INFORMATION FOR EXCAVATION
1-800-892-0123

FUNCTIONAL CLASSIFICATION : MAJOR COLLECTOR
ADT : 5400 (2024)
DESIGN SPEED : 50 MPH (POSTED 45)



TOTAL AND NET LENGTH OF PROJECT = 1974.00 FEET = 0.374 MILES

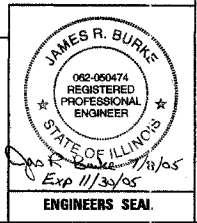
SECTION 04-00022-04-SP ENDS STATION 247+39.00



DESCRIPTION OF WORK

THE PROJECT WILL CONSIST OF IMPROVING A HORIZONTAL CURVE ON COUNTY HIGHWAY 20. THE IMPROVEMENTS WILL CONSIST OF INCREASING THE SUPERELEVATION BY VARIABLE THICKNESS RESURFACING, CONSTRUCTING BITUMINOUS SHOULDERS 6' WIDE, AND FLATTENING THE EARTH SIDE SLOPES.

HUTCHISON ENGINEERING, INC
CONSULTING ENGINEERS
JACKSONVILLE, ILLINOIS
2005 JOB NO 2314



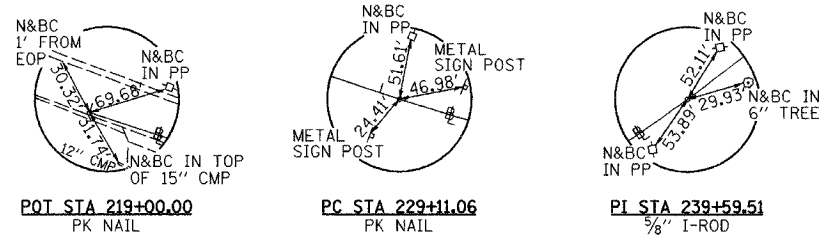
APPROVED	<i>May 31</i>	20 05
	<i>William R. Burke</i>	COUNTY ENGINEER
PASSED	<i>OCTOBER 13</i>	20 05
	<i>James J. ...</i>	DISTRICT SIX ENGINEER OF LOCAL ROADS & STREETS
PASSED	<i>OCT 14</i>	20 05
	<i>W.R. ...</i>	DISTRICT SIX ENGINEER OF CONSTRUCTION
Releasing For Bid Based on Limited Review	<i>OCT 13</i>	20 05
	<i>Christine M. Reed</i>	DEPUTY DIRECTOR OF HIGHWAYS, REGION FOUR ENGINEER
STATE OF ILLINOIS DEPARTMENT OF TRANSPORTATION		

CONTRACT NO. 93400

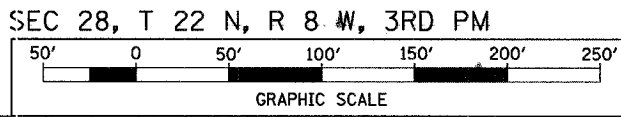
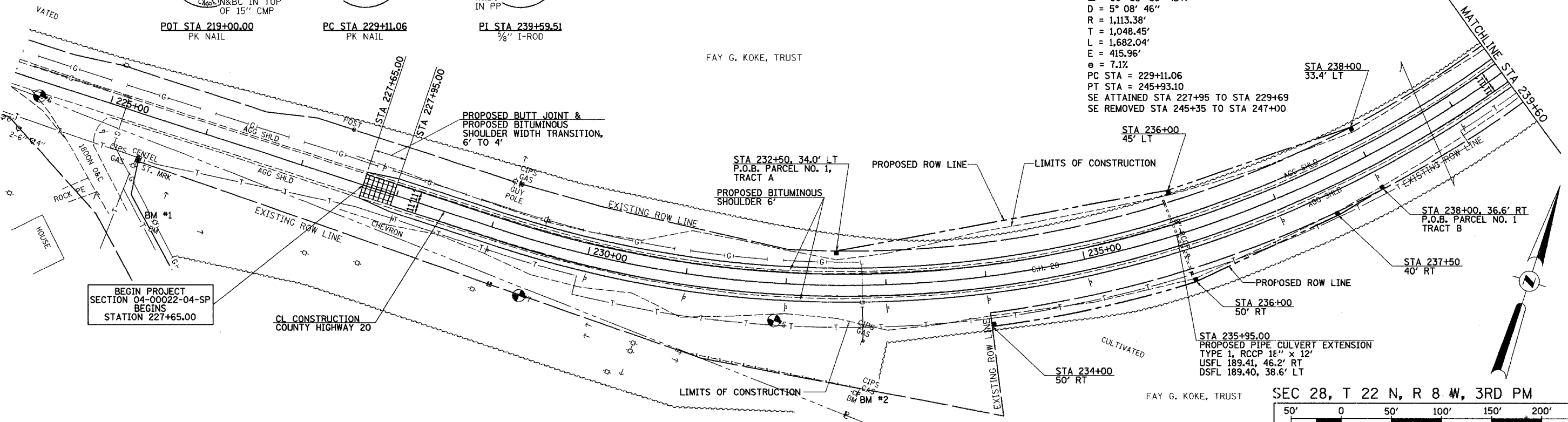
SEC 28, T 22 N, R 8 W, 3RD PM

F.A.S. RTE.	SECTION	COUNTY	TOTAL SHEETS	SHEET NO.
567	04-00022-04-FP	MASON	18	3
STA. 224+00		TO STA. 239+60		
FED. ROAD DIST. NO.		ILLINOIS FED. AID PROJECT		

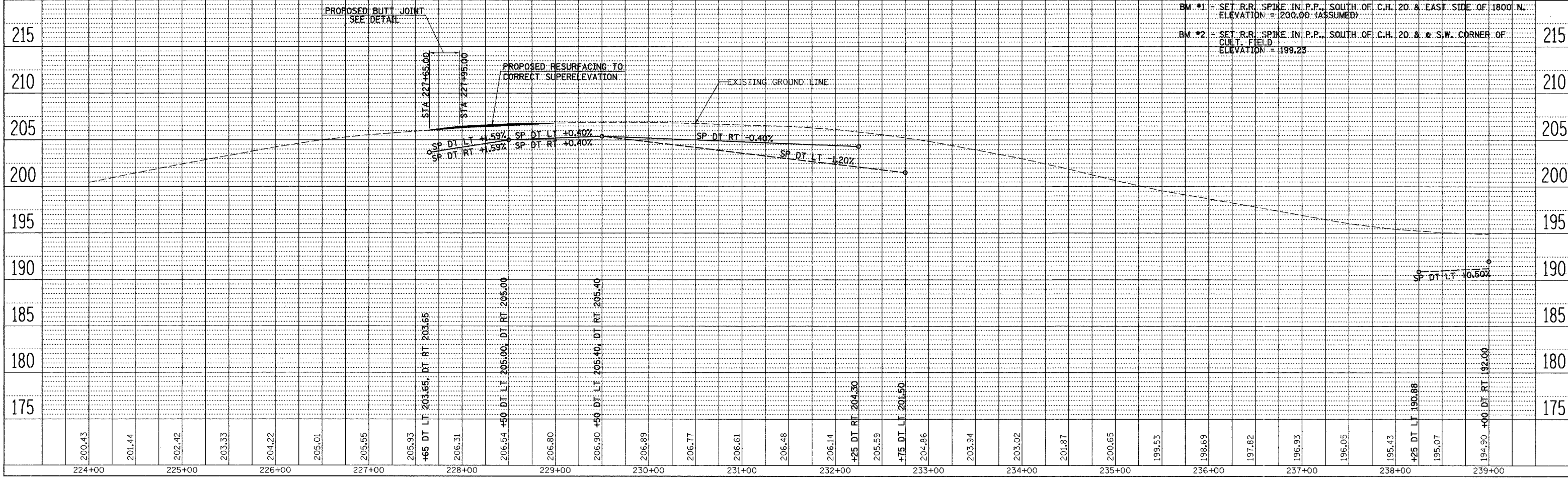
CONTRACT NO. 93400



PROP CURVE CH20-1
 PI STA = 239+59.51
 $\Delta = 86^\circ 33' 35''$ (LT)
 $D = 5^\circ 08' 46''$
 $R = 1,113.38'$
 $T = 1,048.45'$
 $L = 1,682.04'$
 $E = 415.96'$
 $e = 7.1\%$
 PC STA = 229+11.06
 PT STA = 245+93.10
 SE ATTAINED STA 227+95 TO STA 229+69
 SE REMOVED STA 245+35 TO STA 247+00



SEC 33, T 22 N, R 8 W, 3RD PM



BM #1 - SET R.R. SPIKE IN P.P., SOUTH OF C.H. 20 & EAST SIDE OF 1800' N. ELEVATION = 1200.00 (ASSUMED)
 BM #2 - SET R.R. SPIKE IN P.P., SOUTH OF C.H. 20 & S.W. CORNER OF CULT. FIELD. ELEVATION = 1199.25

ROADWAY PLAN & PROFILE COUNTY HIGHWAY 20 (FAS 567), STA 224+00 TO STA 239+60

PLAN	DATE
BY	
REVISIONS	
NO.	

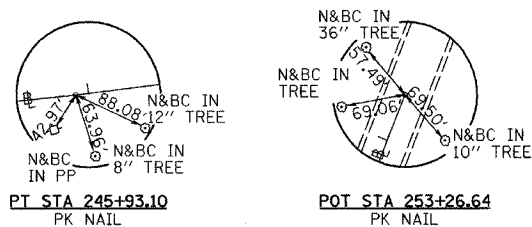
PROFILE	DATE
BY	
REVISIONS	
NO.	

v:\2014\p1.dgn 07/06/2015 08:23:51 AM

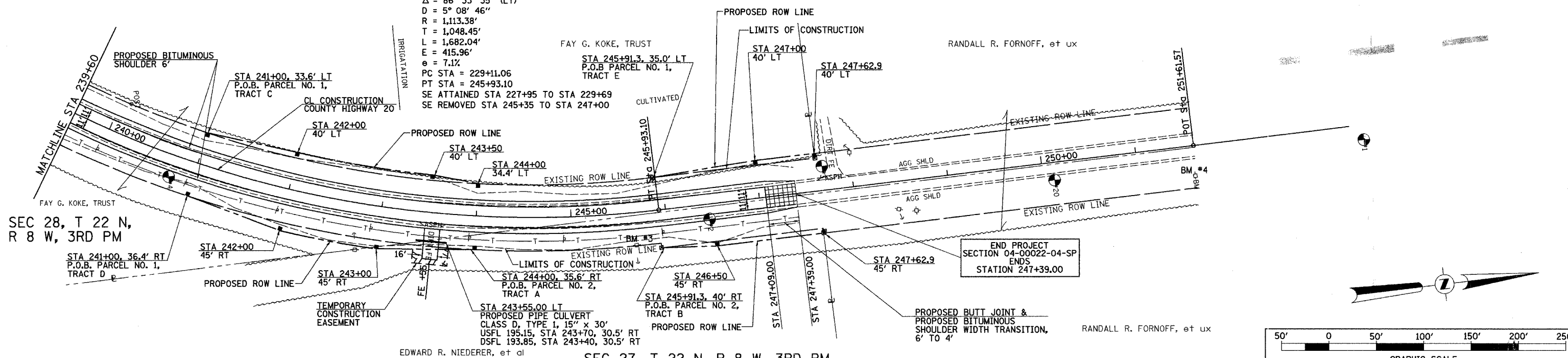
SEC 28, T 22 N, R 8 W, 3RD PM

F.A.S. RTE.	SECTION	COUNTY	TOTAL SHEETS	SHEET NO.
567	04-0022-04-FF	MASON	18	4
STA. 239+60		TO STA. 251+62		
FED. ROAD DIST. NO.		ILLINOIS	FED. AID PROJECT	

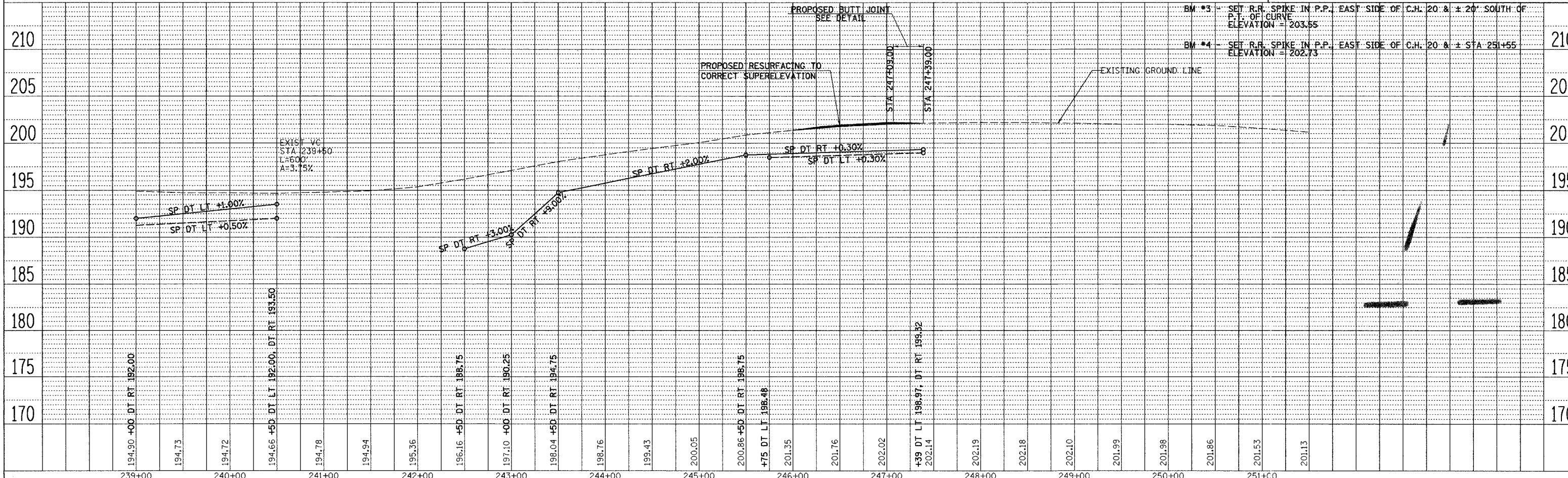
CONTRACT NO. 93400



PROP CURVE CH20-1
 PI STA = 239+59.51
 $\Delta = 86^\circ 33' 35''$ (LT)
 $D = 5^\circ 08' 46''$
 $R = 1,113.38'$
 $T = 1,048.45'$
 $L = 1,682.04'$
 $E = 415.96'$
 $e = 7.1\%$
 PC STA = 229+11.06
 PT STA = 245+93.10
 SE ATTAINED STA 227+95 TO STA 229+69
 SE REMOVED STA 245+35 TO STA 247+00



SEC 27, T 22 N, R 8 W, 3RD PM



ROADWAY PLAN & PROFILE COUNTY HIGHWAY 20 (FAS 567), STA 239+60 TO STA 251+62

DATE	BY

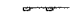


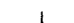




DATE	BY

V: 02/14/02 dgm 07/09/2005 10:24:05 AM

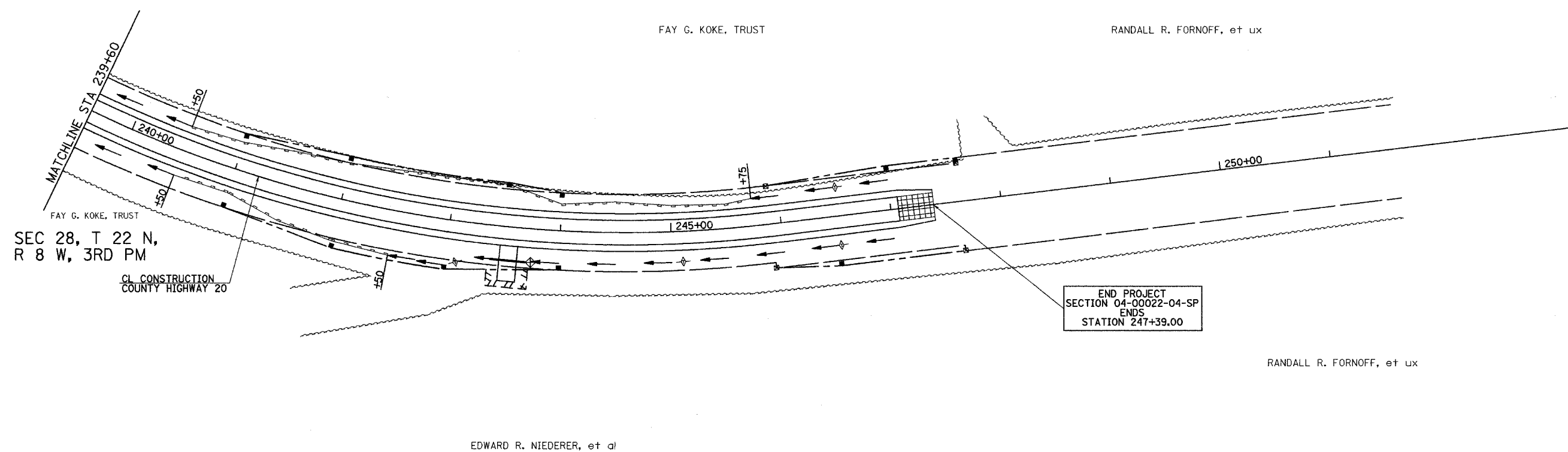
F.A.S. RTE.	SECTION	COUNTY	TOTAL SHEETS	SHEET NO.
567	04-00022-04-FP	MASON	18	6
STA. 239+60		TO STA. 251+62		
FED. ROAD DIST. NO.	ILLINOIS	FED. AID PROJECT		

CONTRACT NO. 93400

LEGEND

-  PERIMETER EROSION BARRIER
-  EROSION CONTROL BLANKET
-  AGGREGATE DITCH
-  TEMPORARY DITCH CHECK
-  INLET & PIPE PROTECTION
-  STANDARD DITCH - FLOW LINE AND DIRECTION
-  SPECIAL DITCH - FLOW LINE AND DIRECTION
-  PROPOSED RIPRAP PLACEMENT

SEC 28, T 22 N, R 8 W, 3RD PM

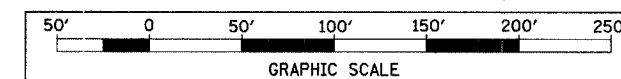
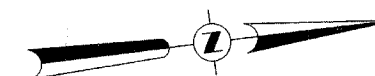


SEC 28, T 22 N,
R 8 W, 3RD PM

CL CONSTRUCTION
COUNTY HIGHWAY 20

END PROJECT
SECTION 04-00022-04-SP
ENDS
STATION 247+39.00

SEC 27, T 22 N, R 8 W, 3RD PM

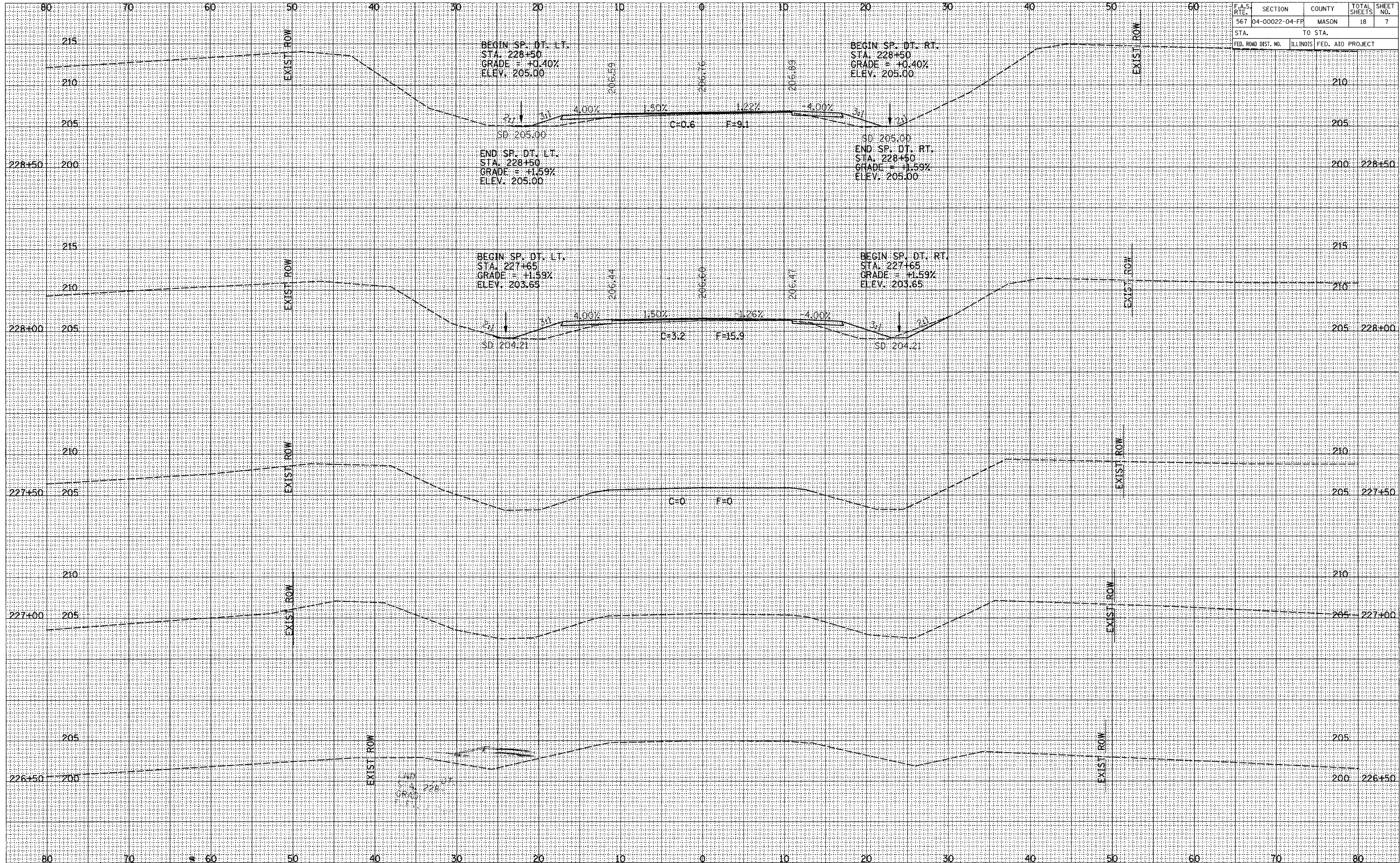


REVISIONS	
NAME	DATE

ILLINOIS DEPARTMENT OF TRANSPORTATION
EROSION CONTROL PLANS
COUNTY HIGHWAY 20 (FAS 567)
SECTION 04-00022-04-FP
STA 239+60 TO STA 251+62

SCALE: _____
DATE _____
DRAWN BY JCG
CHECKED BY JRB

F.A.S. RTE.	SECTION	COUNTY	TOTAL SHEETS	SHEET NO.
567	04-00022-04-FF	MASON	18	7
STA. TO STA.		FED. ROAD DIST. NO. ILLINOIS FED. AID PROJECT		

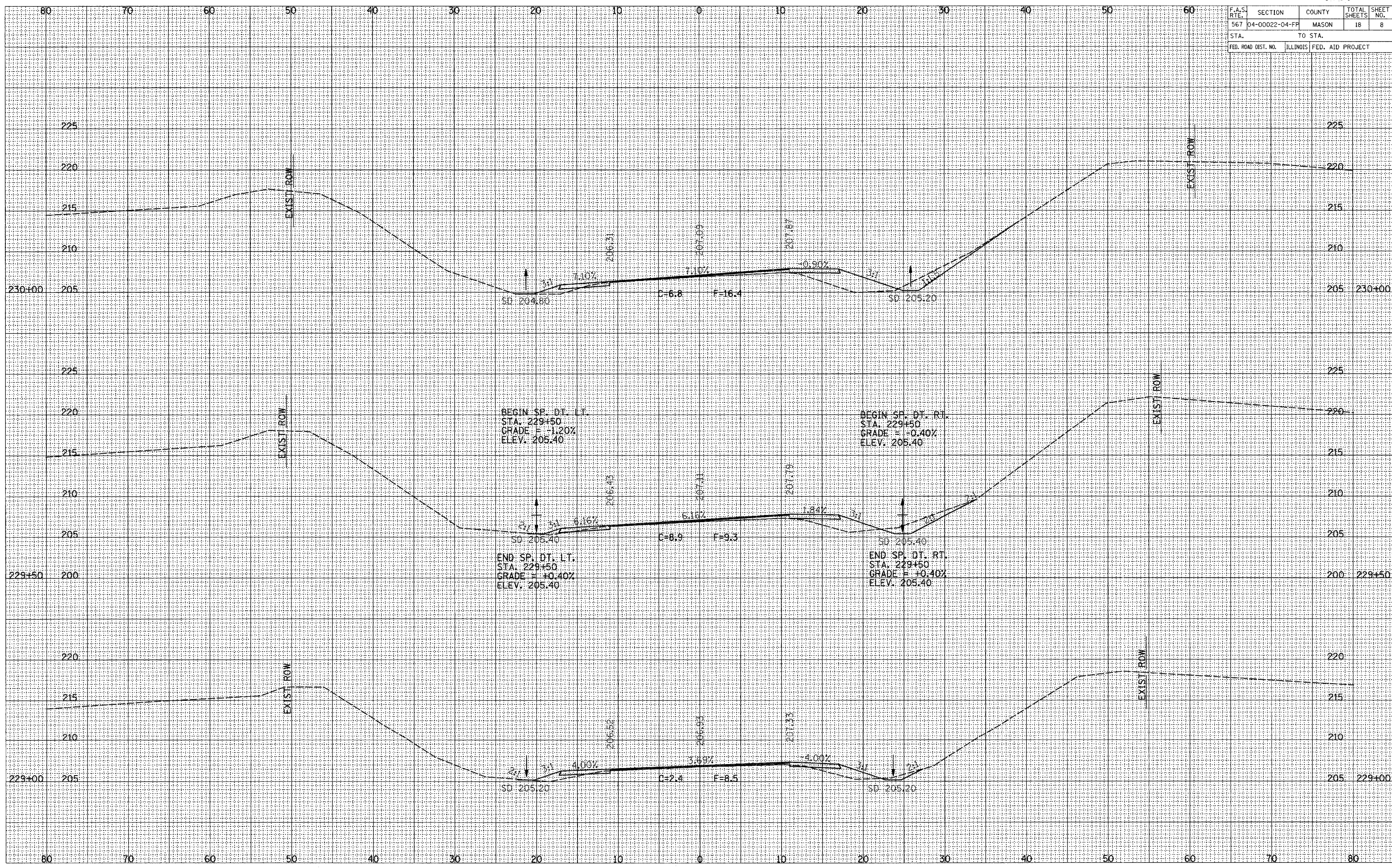


PLOTTED
 SHEET
 NO. 1
 DATE
 11/1/00
 BY
 J. W. B.

PLOTTED
 SHEET
 NO. 1
 DATE
 11/1/00
 BY
 J. W. B.

END
 STA. 228+50
 GRAD

F.A.S. RTE.	SECTION	COUNTY	TOTAL SHEETS	SHEET NO.
567	04-00022-04-FF	MASON	18	8
STA.		TO STA.		
FED. ROAD DIST. NO.		ILLINOIS	FED. AID PROJECT	

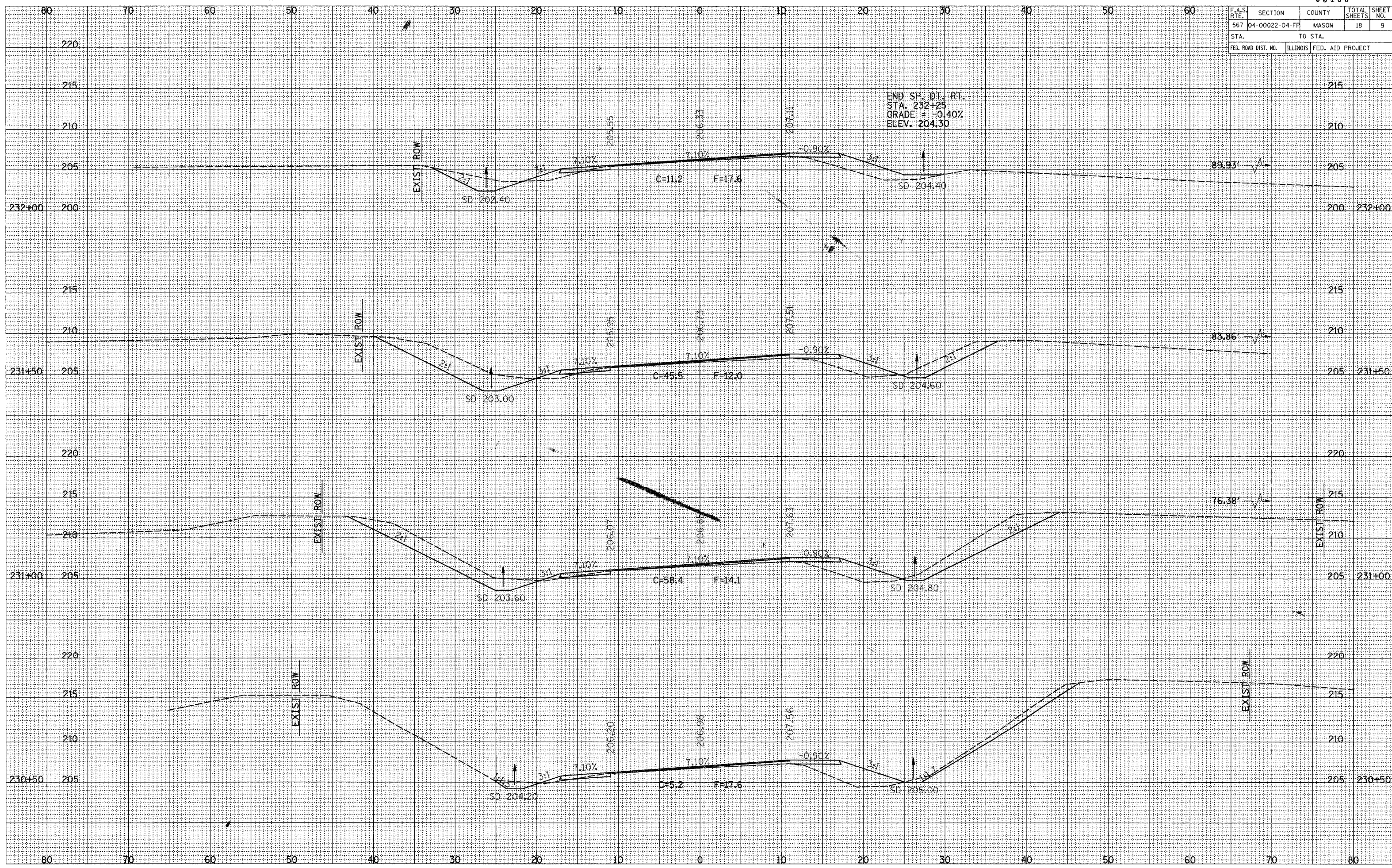


SURVEY PLOTTED
 NOTE BOOK TEMPLATE
 AREAS CHECKED
 NO.

SURVEY PLOTTED
 NOTE BOOK TEMPLATE
 AREAS CHECKED
 NO.

SURVEY PLOTTED
 NOTE BOOK TEMPLATE
 AREAS CHECKED
 NO.

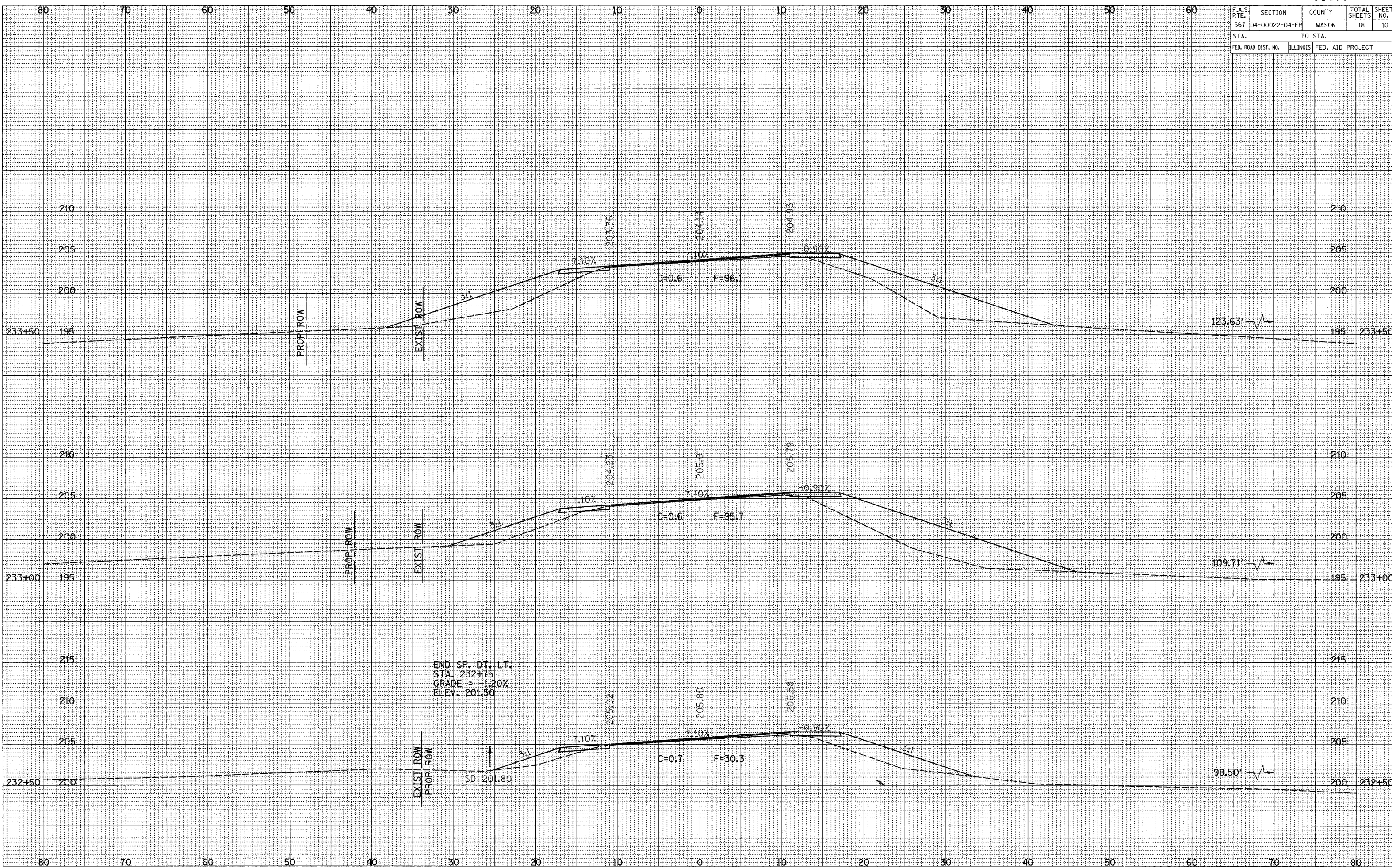
F.A.S. RTE.	SECTION	COUNTY	TOTAL SHEETS	SHEET NO.
567	04-00022-04-FP	MASON	18	9
STA.		TO STA.		
FED. ROAD DIST. NO.	ILLINOIS	FED. AID PROJECT		



SURVEY
 PLOTTED
 TEMPLATE
 NOTE BOOK
 AREAS
 CHECKED
 MS.

SURVEY
 PLOTTED
 TEMPLATE
 NOTE BOOK
 AREAS
 CHECKED
 MS.

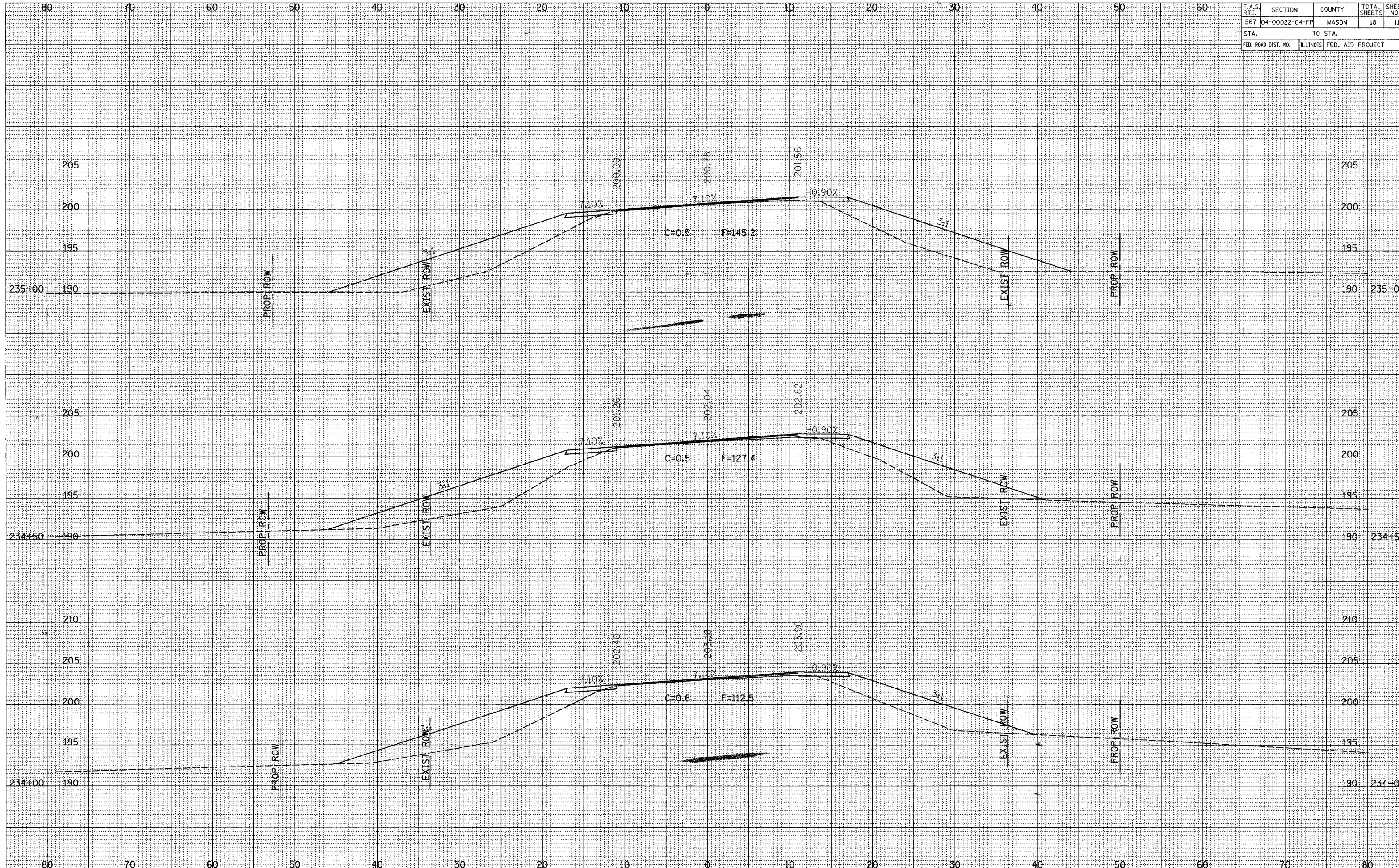
F.A.S. RTE.	SECTION	COUNTY	TOTAL SHEETS	SHEET NO.
567	04-00022-04-FP	MASON	18	10
STA.		TO STA.		
FED. ROAD DIST. NO.		ILLINOIS	FED. AID PROJECT	



PLOTTED
TEMPLATE
NOTE BOOK
AREAS CHECKED

PLOTTED
TEMPLATE
NOTE BOOK
AREAS CHECKED

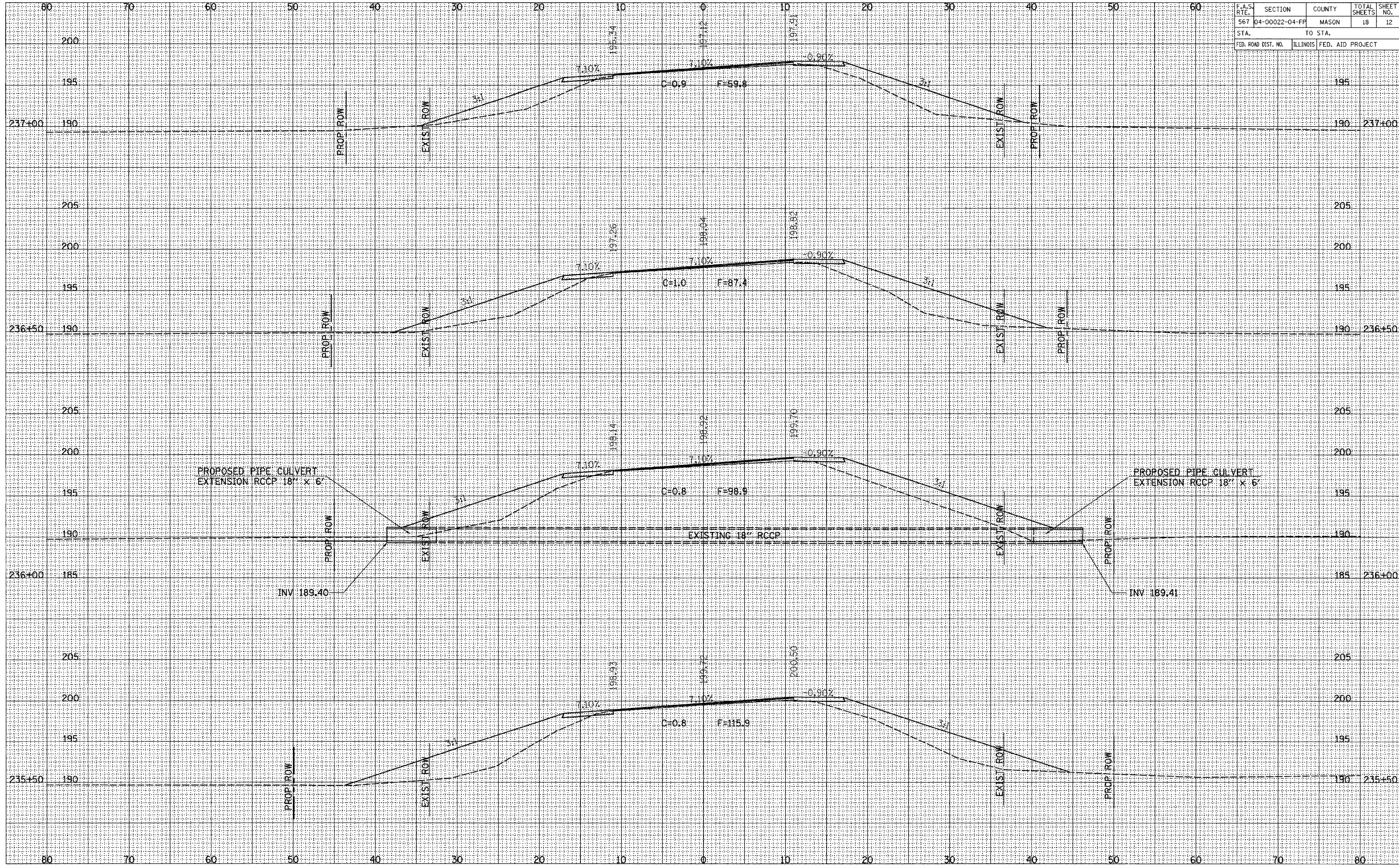
F.A.S. RTE.	SECTION	COUNTY	TOTAL SHEETS	SHEET NO.
567	04-00022-04-FP	MASON	18	11
STA.		TO STA.		
FED. ROAD DIST. NO.	ILLINOIS	FED. AID PROJECT		



SURVEY PLOTTED
 NOTE BOOK TEMPLATE
 AREAS CHECKED

SURVEY PLOTTED
 NOTE BOOK TEMPLATE
 AREAS CHECKED

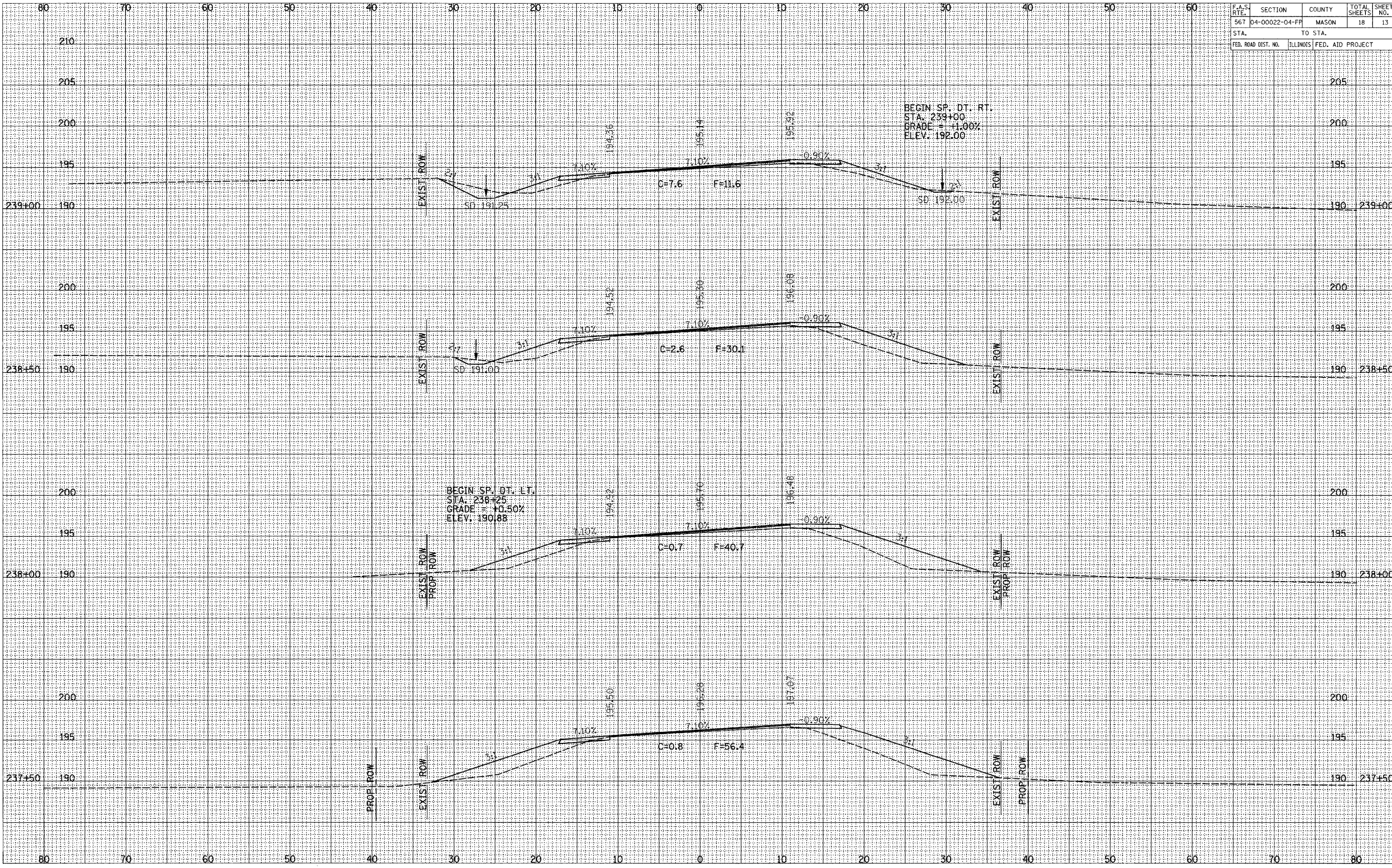
F.A.S. RTE.	SECTION	COUNTY	TOTAL SHEETS	SHEET NO.
567	04-00022-04-FP	MASON	18	12
STA.		TO STA.		
FED. ROAD DIST. NO.		ILLINOIS FED. AID PROJECT		



SURVEY PLOTTED
 NOTE BOOK
 NO.

SURVEY PLOTTED
 NOTE BOOK
 NO.

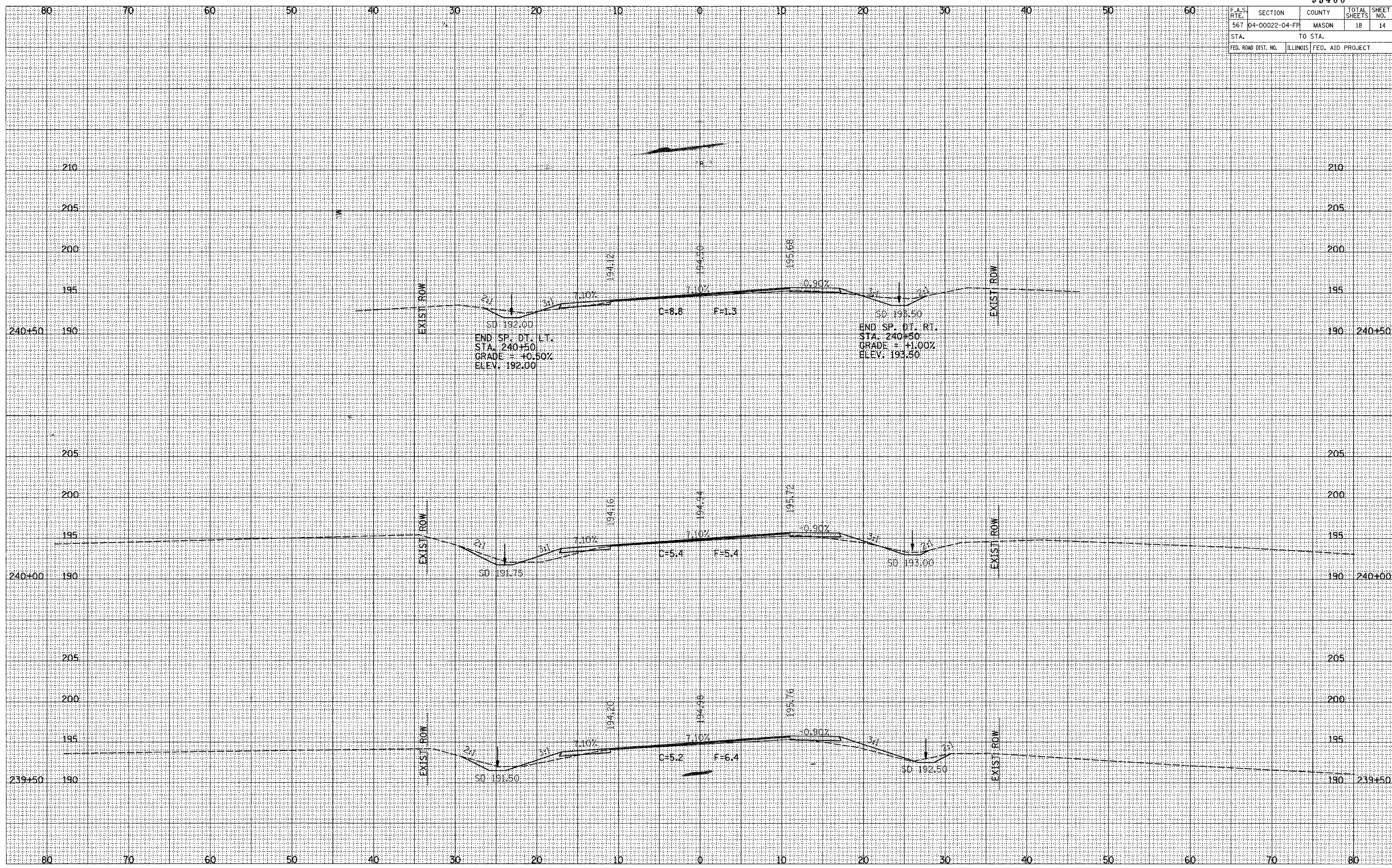
F.A.S. RTE.	SECTION	COUNTY	TOTAL SHEETS	SHEET NO.
567	D4-00022-04-FP	MASON	18	13
STA.		TO STA.		
FED. ROAD DIST. NO.	ILLINOIS	FED. AID PROJECT		



SURVEY
 FLOTTED
 TEMPLATE
 NOTE BOOK
 NO. AREAS CHECKED

SURVEY
 FLOTTED
 TEMPLATE
 NOTE BOOK
 NO. AREAS CHECKED

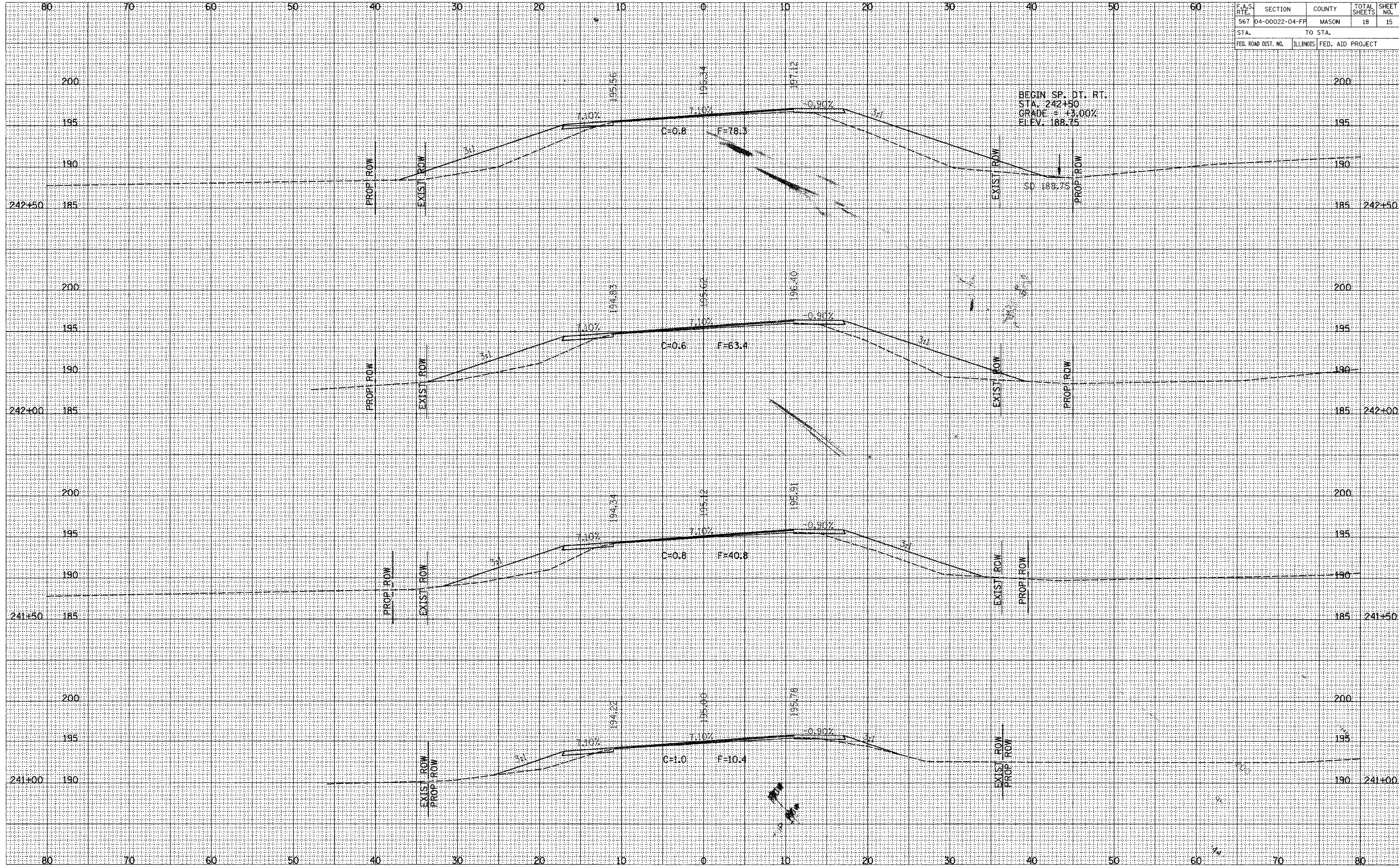
F.A.S. RTE.	SECTION	COUNTY	TOTAL SHEETS	SHEET NO.
567	04-00022-04-FP	MASON	18	14
STA.		TO STA.		
FED. ROAD DIST. NO.		ILLINOIS FED. AID PROJECT		



SURVEY PLOTTED
 NOTE BOOK TEMPLATE
 AREAS CHECKED

SURVEY PLOTTED
 NOTE BOOK TEMPLATE
 AREAS CHECKED

F.A.S. RTE.	SECTION	COUNTY	TOTAL SHEETS	SHEET NO.
567	04-00022-04-FP	MASON	18	15
STA.		TO STA.		
FED. ROAD DIST. NO.		ILLINOIS FED. AID PROJECT		

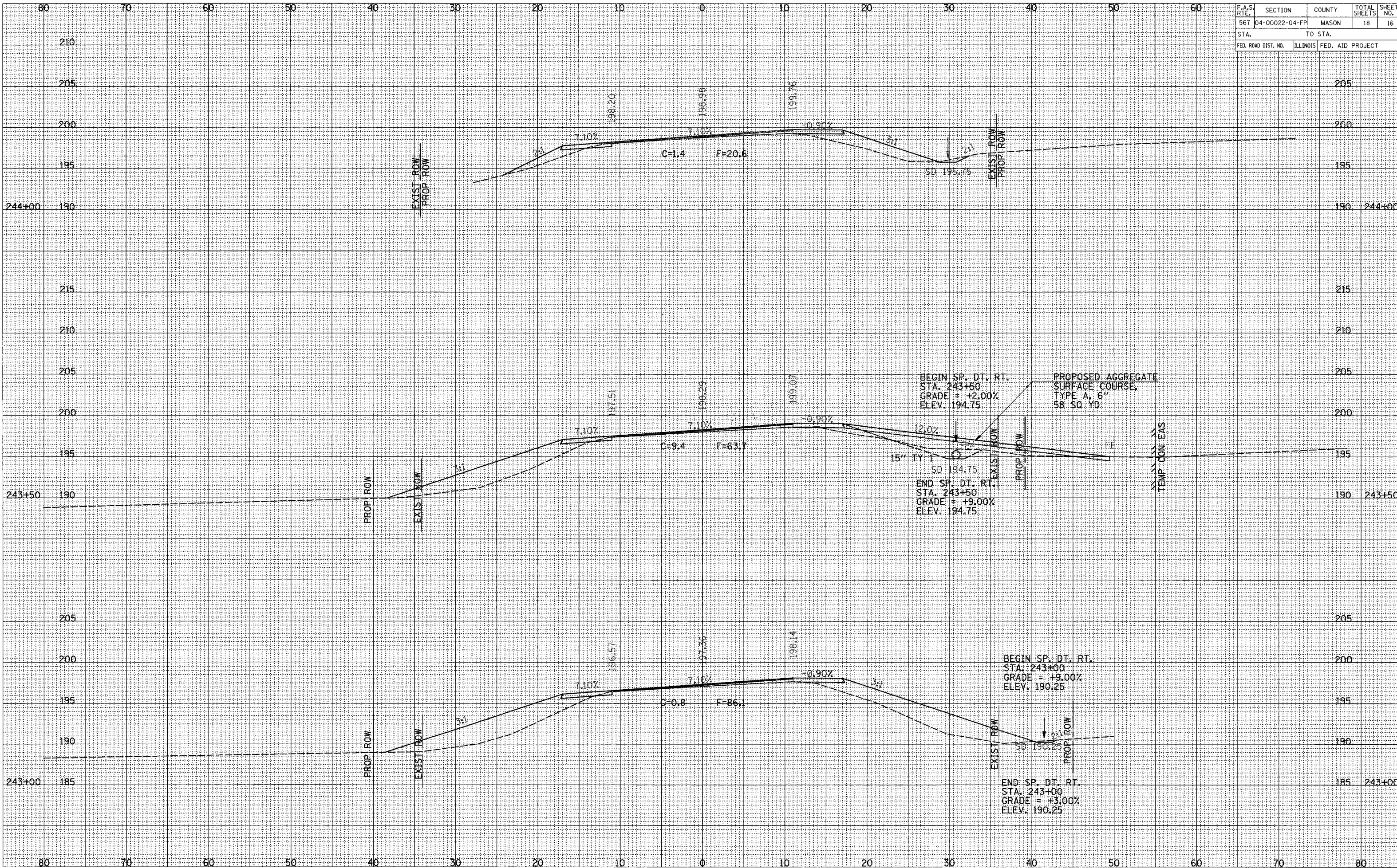


BEGIN SP. DT. RT.
 STA. 242+50
 GRADE = +3.00%
 FL FV: 188.75

PLOTTED
 SURVEY
 NOTE BOOK
 NO.

PLOTTED
 SURVEY
 NOTE BOOK
 NO.

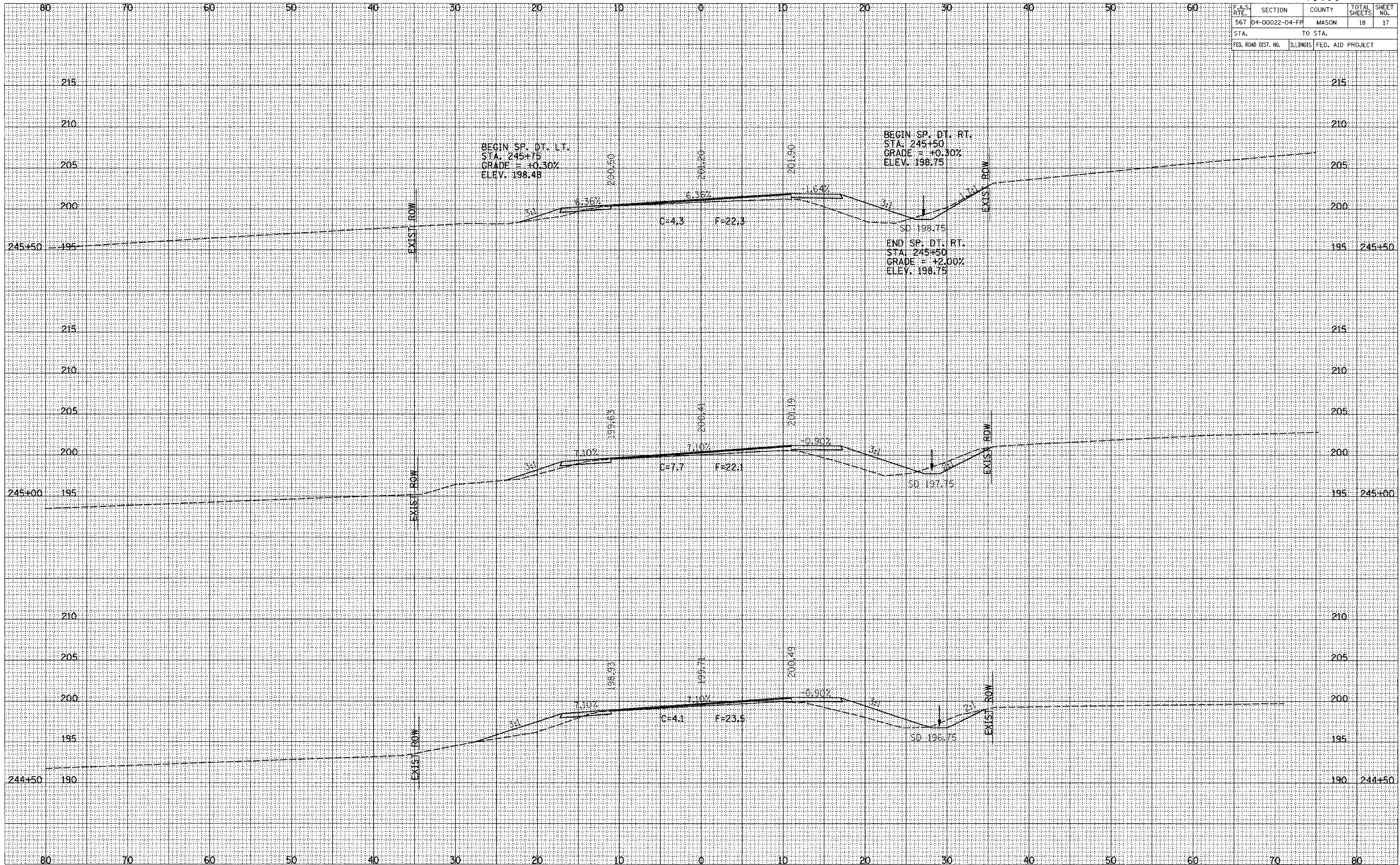
F.A.S. RTE.	SECTION	COUNTY	TOTAL SHEETS	SHEET NO.
567	04-00022-04-FP	MASON	18	16
STA.		TO STA.		
FED. ROAD DIST. NO.	ILLINOIS	FED. AID PROJECT		



DATE: _____
 DRAWN BY: _____
 CHECKED BY: _____
 NO. _____

DATE: _____
 DRAWN BY: _____
 CHECKED BY: _____
 NO. _____

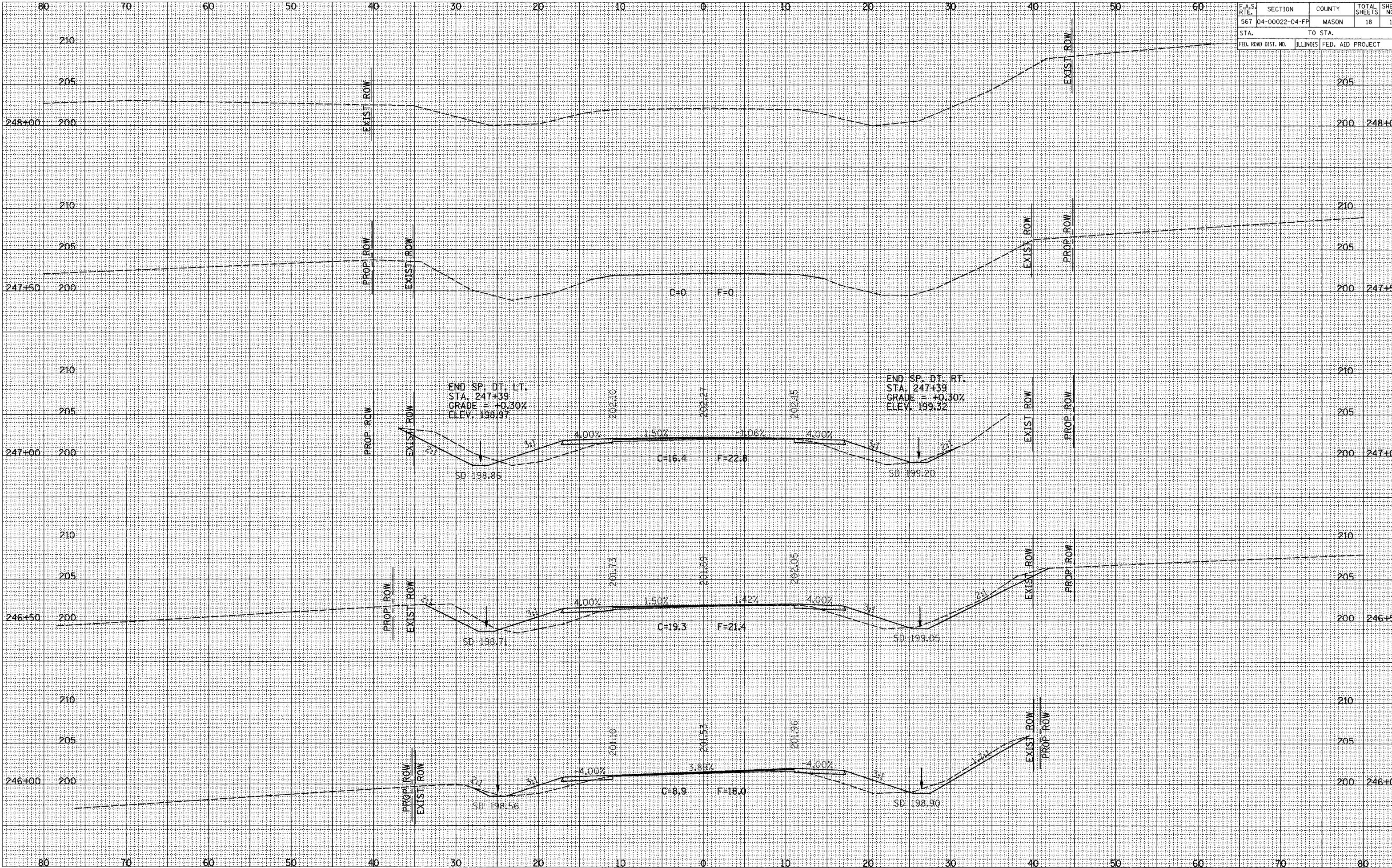
F.A.S. RTE.	SECTION	COUNTY	TOTAL SHEETS	SHEET NO.
567	04-00022-04-FP	MASON	18	17
STA.		TO STA.		
FED. ROAD DIST. NO.		ILLINOIS FED. AID PROJECT		



NOTED
 SURVEY PLOTTED
 NOTE BOOK TEMPLATE
 AREAS CHECKED

NOTED
 SURVEY PLOTTED
 NOTE BOOK TEMPLATE
 AREAS CHECKED

F.A.S. RTE.	SECTION	COUNTY	TOTAL SHEETS	SHEET NO.
567	04-00022-04-FP	MASON	18	18
STA.		TO STA.		
FED. ROAD DIST. NO.		ILLINOIS FED. AID PROJECT		



PLOTTED
 SHEET NO.
 TEMPLATE
 NO.

PLOTTED
 SHEET NO.
 TEMPLATE
 NO.