

ROUTE NO.	SECTION	COUNTY	TOTAL SHEETS	SHEET NO.
FAS 429 C.H. 23	94-00087 -00-BR	HANCOCK	43	7
ROAD DIST.		ILLINOIS		

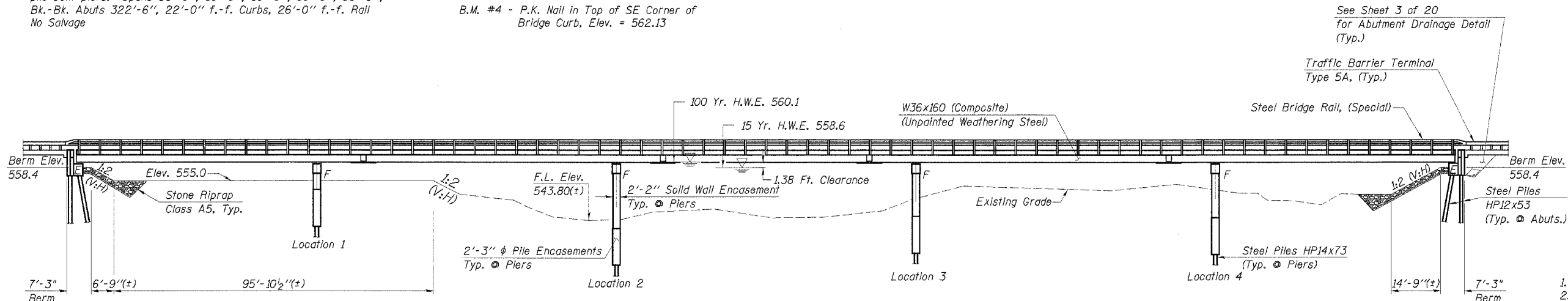
Contract No. 93401
Sheet 1 of 20

Existing Structure No. 034-3230

Sta. 314+03.25 - 5-Span Continuous Steel Wide Flange Beam Bridge (W27x106) with Concrete Deck on closed timber abutments & concrete pile bent piers. Spans 56'-0", 69'-0", 69'-0", 69'-0", 56'-0"; Bk.-Bk. Abuts 322'-6", 22'-0" f.-f. Curbs, 26'-0" f.-f. Rail No Salvage

B.M. Descriptions

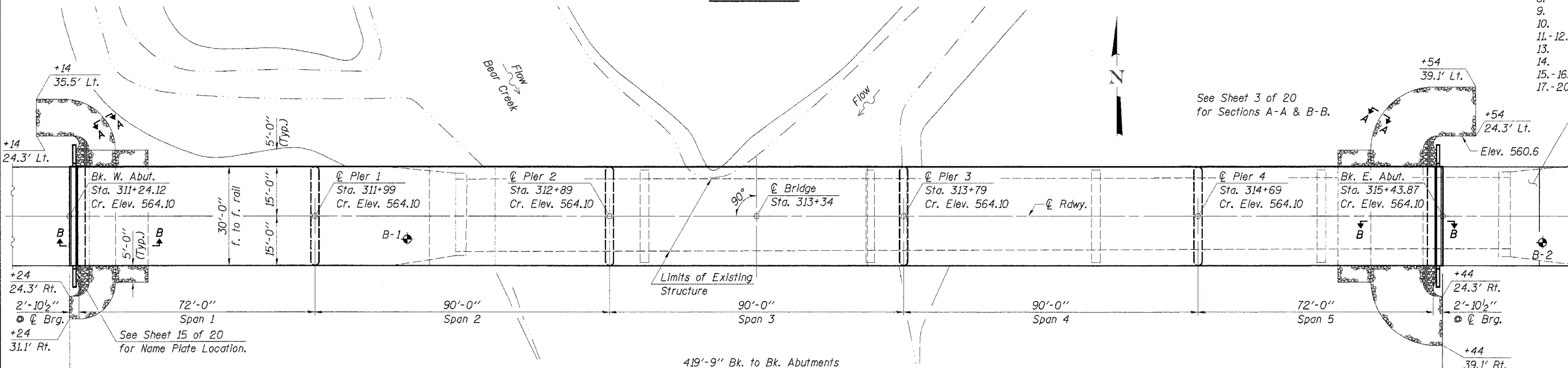
B.M. #3 - Spike in Wingwall Post
12' Rt. Sta. 312+26, Elev. = 563.60
B.M. #4 - P.K. Nail in Top of SE Corner of Bridge Curb, Elev. = 562.13



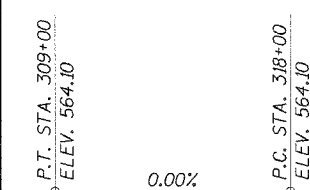
ELEVATION

INDEX OF SHEETS

1. General Plan & Elevation
2. General Notes & Bill of Materials
3. Miscellaneous Details
- 4.-7. Top of Slab Elevations
8. Superstructure
9. Expansion Joint Details
10. Steel Bridge Rail (Special)
- 11.-12. Structural Steel
13. Bearing Details
14. Anchor Bolt Details
- 15.-16. Abutments
- 17.-20. Piers



PLAN



PROFILE GRADE
@ Roadway

DESIGNED	A.R.K.
CHECKED	S.F.M., F.J.S.
DRAWN	S.A.P.
CHECKED	A.R.K., F.J.S.

LOADING HS20-44
Allow 25#/sq. ft. for future wearing surface.

WATERWAY INFORMATION

Drainage Area	127.73 Sq. Mi.
Existing Opening (15 Yr.)	2,618 Sq. Ft.
Required Opening (15 Yr.)	3,149 Sq. Ft.
Proposed Opening (15 Yr.)	3,149 Sq. Ft.
Design Discharge (15 Yr.)	8,325 C.F.S.
Created Head (15 Yr.)	0.1 Ft.
100 Year Discharge	12,950 C.F.S.
100 Yr. Created Head	0.2 Ft.

Construction Permits: The requirements of the IDNR - Office of Water Resources have been fulfilled in accordance with Statewide Permit No. 2

DESIGN SPECIFICATIONS

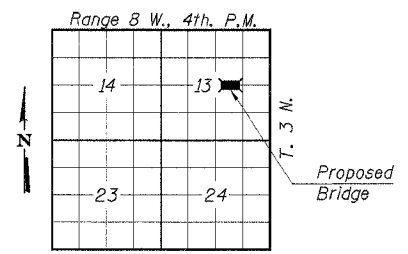
2002 AASHTO

DESIGN STRESSES

$f'_c = 3,500$ p.s.i. (Concrete)
 $f_y = 60,000$ p.s.i. (Reinforcement Bars)
 $f_y = 50,000$ p.s.i. AASHTO M270 GR 50W (Structural Steel)

SEISMIC DATA

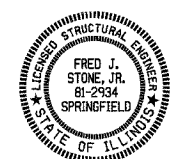
Seismic Performance Category (S.P.C.) = A
Bedrock Acceleration Coefficient (A) = 0.04
Site Coefficient (S) = 1.0



LOCATION PLAN

"I certify that to the best of my knowledge, information and belief, this bridge design is structurally adequate for the design loading shown on the plans. The design is an economical one for the style of structure and complies with requirements of the current 'AASHTO Standard Specifications for Highway Bridges'."

Fred J. Stone, Jr. (10-12-05)
ILLINOIS STRUCTURAL NO. 2934 (Expires 11/30/06)



30' Bridge Approach Pavement
Std. 420401 (Typ.) (No Curb)
(Pay Width = 30'-0")

**BEAR CREEK
BUILT 200_ BY
HANCOCK COUNTY
SEC. 94-00087-00-BR
F.A. PROJ. BRS-429(102)
LOADING HS20
STR. NO. 034-3231**

LETTERING FOR NAME PLATE
See Std. 515001

GENERAL PLAN & ELEVATION

SECTION 94-00087-00-BR
COUNTY HIGHWAY 23 - FAS ROUTE 429
HANCOCK COUNTY
STA. 313+34

4440 ASH GROVE SPRINGFIELD, IL 62711 (217) 793-8600 oasinc@famvid.com	OZYURT AND STONE, INC. CONSULTING ENGINEERS	JOB NO.: 0319 FILE: GPE.DGN DATE: 10/12/05
--	---	--