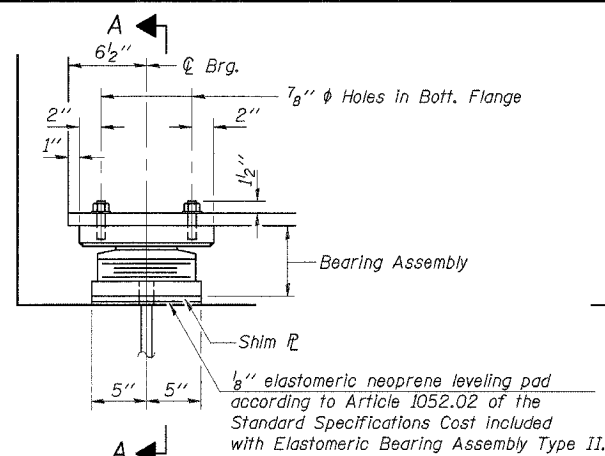
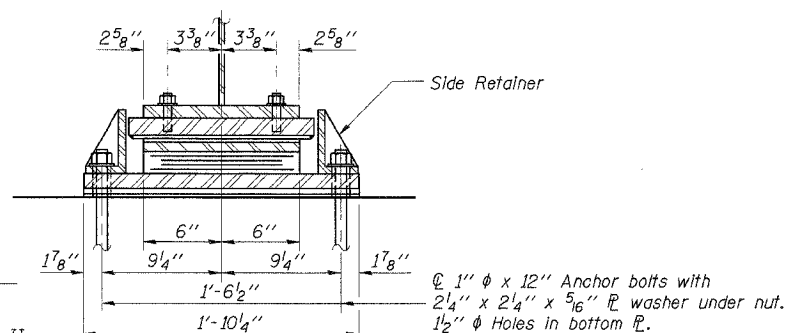


ROUTE NO.	SECTION	COUNTY	TOTAL SHEETS	SHEET NO.
FAS 429	94-00087	HANCOCK	43	19
C.H. 23	-00-BR			
ROAD DIST.		ILLINOIS		

Contract No. 93401  
Sheet 13 of 20



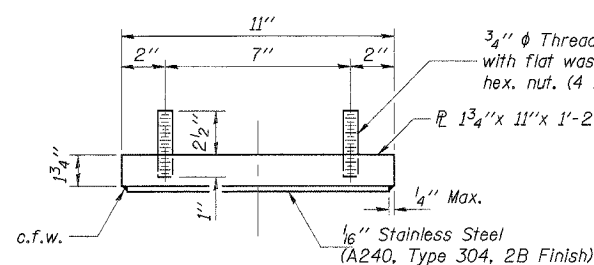
ELEVATION AT ABUT.



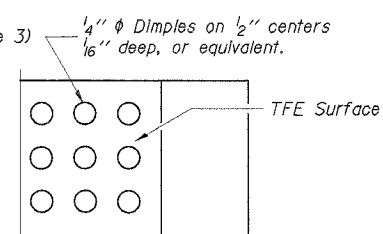
SECTION A-A

**TYPE II ELASTOMERIC EXP. BRG.**

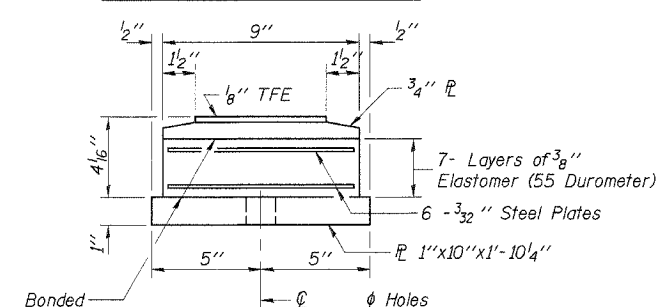
(10 Required)



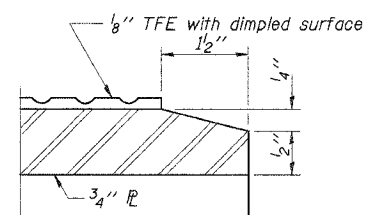
TOP BEARING ASSEMBLY



PLAN-TFE SURFACE



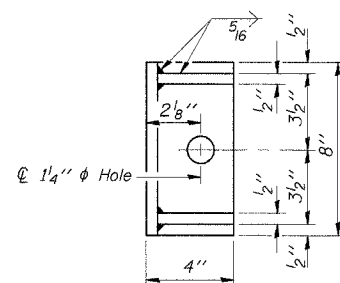
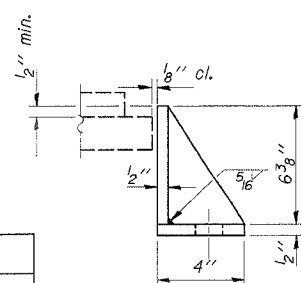
BOTTOM BEARING ASSEMBLY



SECTION THRU TFE

Note: The 1/8" TFE sheet shall be bonded directly to the top steel plate with a two-component, medium viscosity epoxy resin, conforming to the requirements of the Federal Specification MMM-A-134, Type I. The bond agent shall be applied on the full area of the contact surfaces.

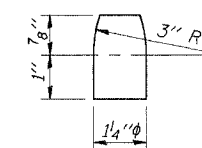
Bonding of 1/8" TFE sheet during vulcanizing process will be permitted provided the process and method of adjusting assembly height is approved by the Engineer.



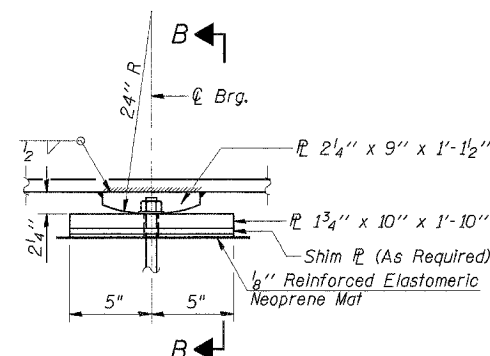
**SIDE RETAINER - ABUTMENTS**

Equivalent rolled angle with stiffeners will be allowed in lieu of welded plates. Weight included with Structural Steel.

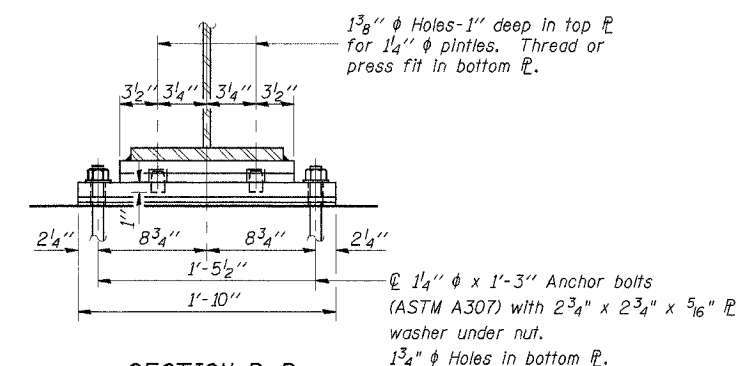
DESIGNED	A.R.K.
CHECKED	S.F.M., F.J.S.
DRAWN	S.A.P.
CHECKED	A.R.K., F.J.S.
I-2-E2	9-1-03



PINTLE



ELEVATION AT PIERS 1, 2, 3, & 4

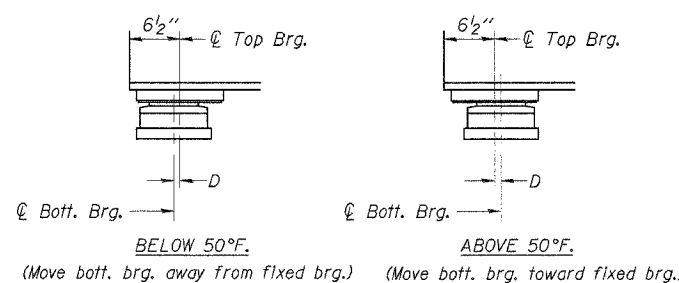


SECTION B-B

**FIXED BEARING**

(20 Required)  
Weight included with Structural Steel.

Notes: Anchor bolts at fixed bearings may be built into the masonry. See sheet 14 of 20 for Anchor Bolt installation.



**SETTING ANCHOR BOLTS AT EXP. BRG.**

D = 1/8" per each 100' of expansion for every 15° temp. change from the normal temp. of 50°F.

**BILL OF MATERIAL**

Item	Unit	Total
Elastomeric Bearing Assembly Type II	Each	10

**BEARING DETAILS**

SECTION 94-00087-00-BR  
COUNTY HIGHWAY 23 - FAS ROUTE 429  
HANCOCK COUNTY  
STA. 313+34

4440 ASH GROVE SPRINGFIELD, IL 62711 (217) 933-8600 oasinc@amvid.com	<b>OZYURT AND STONE, INC.</b> CONSULTING ENGINEERS	JOB NO.: 0319 FILE: 03BRG.DGN DATE: 08/24/05
---	---	--