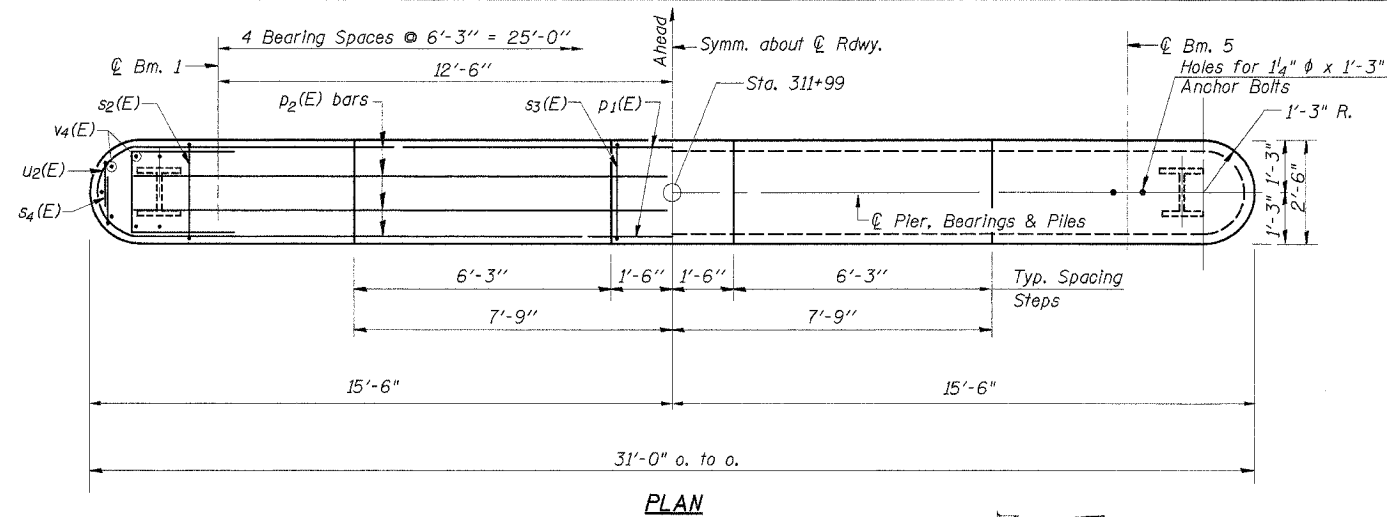
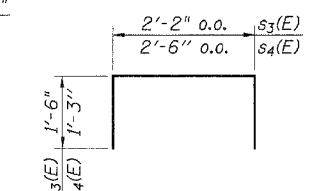


ROUTE NO.	SECTION	COUNTY	TOTAL SHEETS	SHEET NO.
FAS 429 C.H. 23	94-00087 -00-BR	HANCOCK	43	23
ROAD DIST.		ILLINOIS		

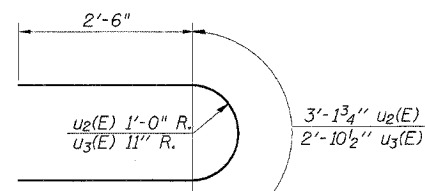
Contract No. 93401
Sheet 17 of 20



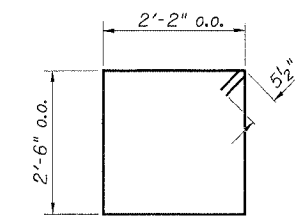
PLAN



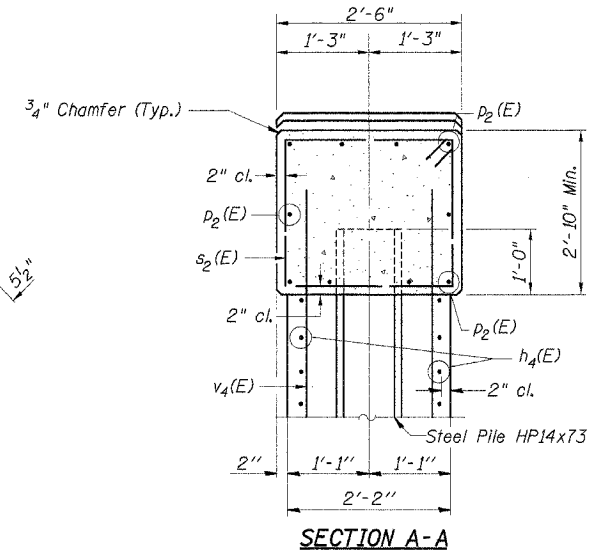
BAR s3(E) or s4(E)



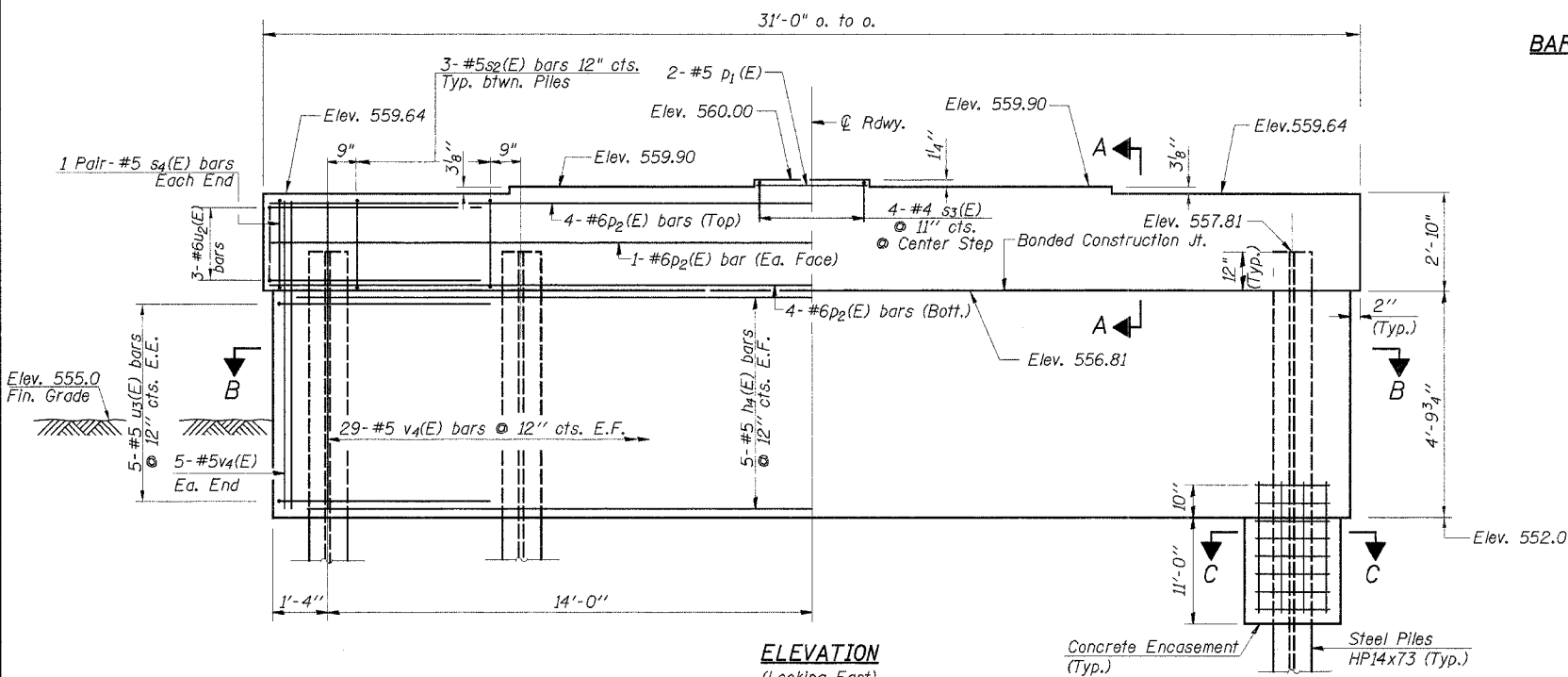
BAR u2(E) & u3(E)



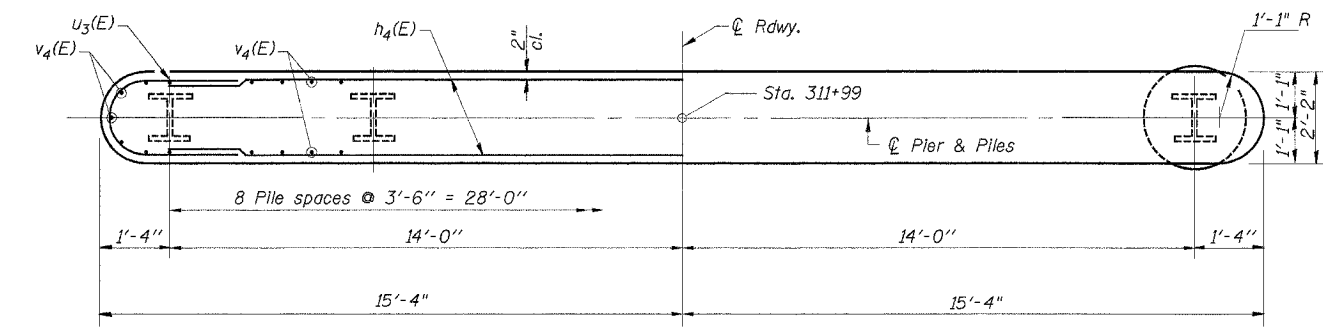
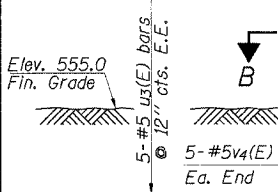
BAR s2(E)



SECTION A-A



ELEVATION
(Looking East)



SECTION B-B

DESIGNED	A.R.K.
CHECKED	S.F.M., F.J.S.
DRAWN	S.A.P.
CHECKED	A.R.K., F.J.S.

NOTES

Space Reinforcement in cap to miss Anchor Bolts.

Pour Steps monolithically with cap.

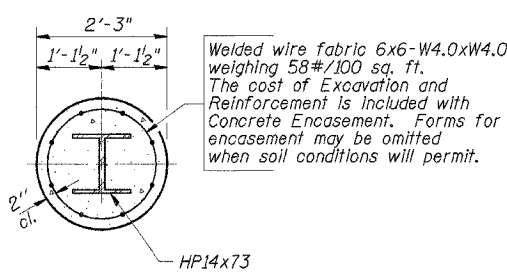
All edges shall have the standard 3/4" Chamfer except as noted.

Anchor Bolts at fixed bearings may be built into the masonry.

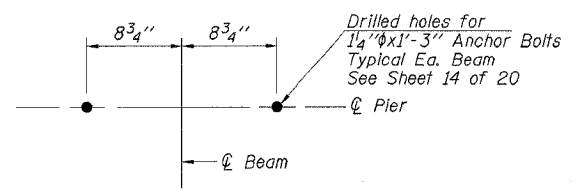
PILE DATA

Type: Steel HP14x73
Capacity: Design-47 Ton/Pile
Drive-70 Ton/Pile
Est. Length: 68 Ft./Pile
No. Required: 9*

* Includes 1 Test Pile to be driven to 105 Ton/Pile in a permanent location.



SECTION C-C



ANCHOR BOLT HOLES

MIN. BAR LAP

#5 1'-4"
#6 1'-7"

BILL OF MATERIAL

BAR	NO.	SIZE	LENGTH	SHAPE
h4(E)	10	#5	26'-4"	—
p1(E)	2	#5	2'-8"	—
p2(E)	10	#6	26'-8"	—
s2(E)	24	#5	10'-3"	□
s3(E)	4	#4	5'-2"	□
s4(E)	4	#5	5'-0"	□
u2(E)	6	#6	8'-2"	U
u3(E)	10	#5	7'-11"	U
v4(E)	68	#5	6'-0"	—

Concrete Structures	Cu. Yd.	19.8
Reinforcement Bars, Epoxy Coated	Pound	1,550
Steel Piles HP14x73	Foot	544
Test Piles Steel HP14x73	Each	1
Underwater Structure Excavation Protection - Location 1	Each	1
Structure Excavation	Cu. Yd.	24
Concrete Encasement	Cu. Yd.	14.6

Reinforcement bars designated (E) shall be Epoxy Coated

PIER 1

SECTION 94-00087-00-BR
COUNTY HIGHWAY 23 - FAS ROUTE 429
HANCOCK COUNTY
STA. 313+34

4440 ASH GROVE SPRINGFIELD, IL, 62711 (217) 793-6600 oasinc@famvid.com	OZYURT AND STONE, INC. CONSULTING ENGINEERS	JOB NO.: 0319 FILE: 0319PIER1.DGN DATE: 10/12/05
---	---	--