

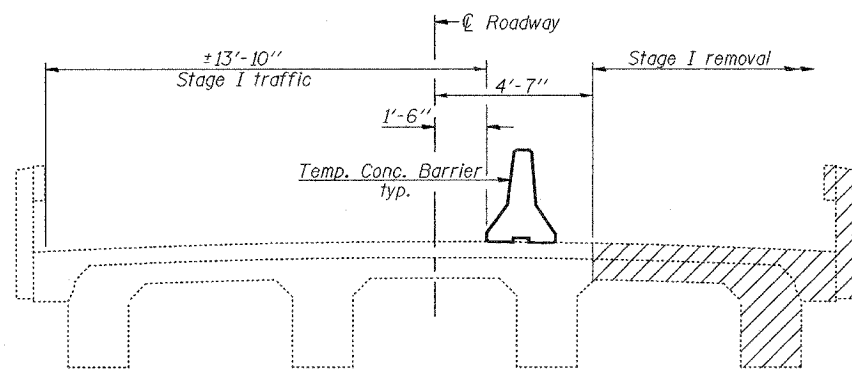
STATE OF ILLINOIS  
DEPARTMENT OF TRANSPORTATION

ROUTE NO.	SECTION	COUNTY	SHEET	SHEET
F.A.P. 781	108B-1	CRAWFORD	38	11
FED. ROAD DIST. NO. 7	ALLIANCE	FED. AID PROJECT-		

SHEET NO. 2

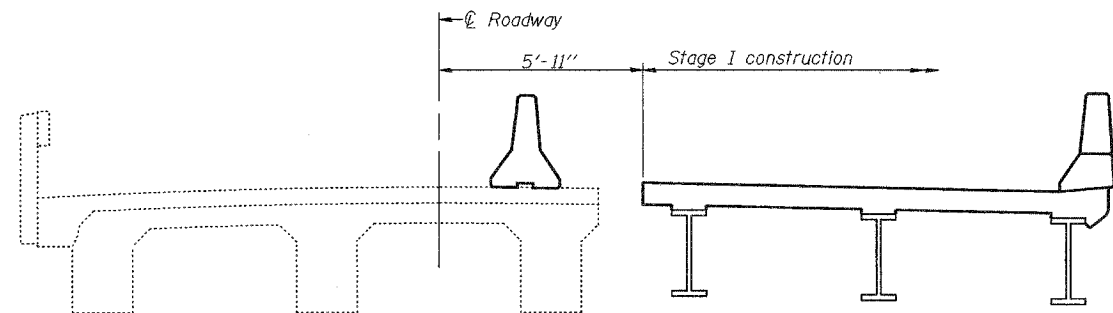
16 SHEETS

Contract #94656

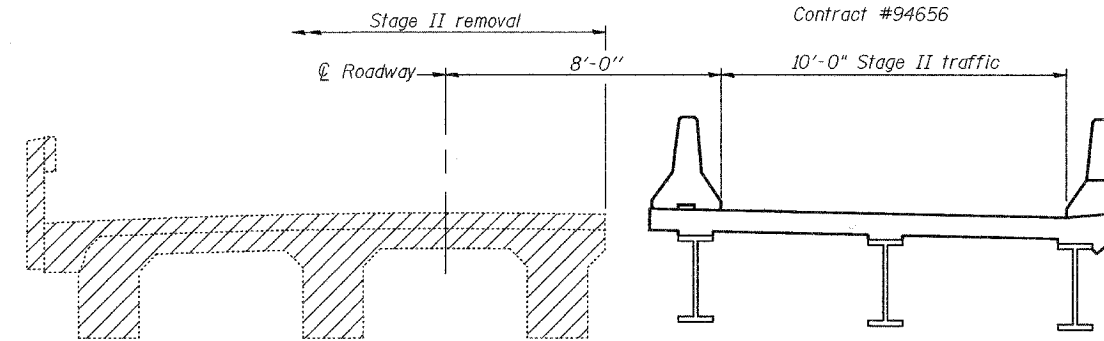


**STAGE I REMOVAL**

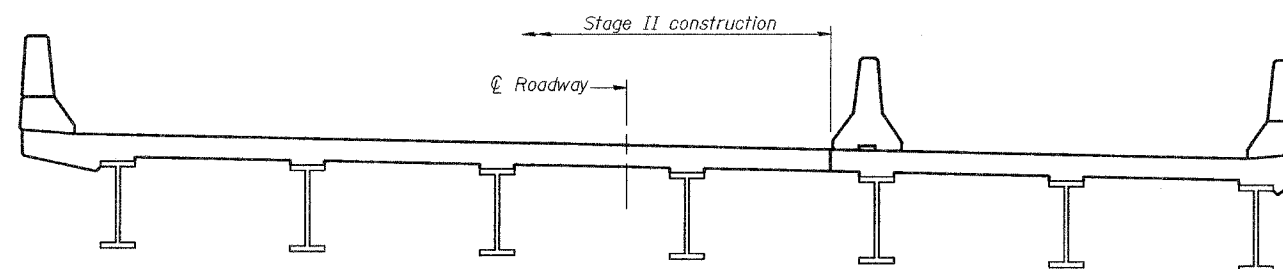
Notes: All staging sections are looking South.  
For quantity of Temporary Concrete Barrier, see roadway plans.  
Hatched area indicates Removal of Existing Structures.  
For details of Temporary Concrete Barrier see sheet 3 of 16.



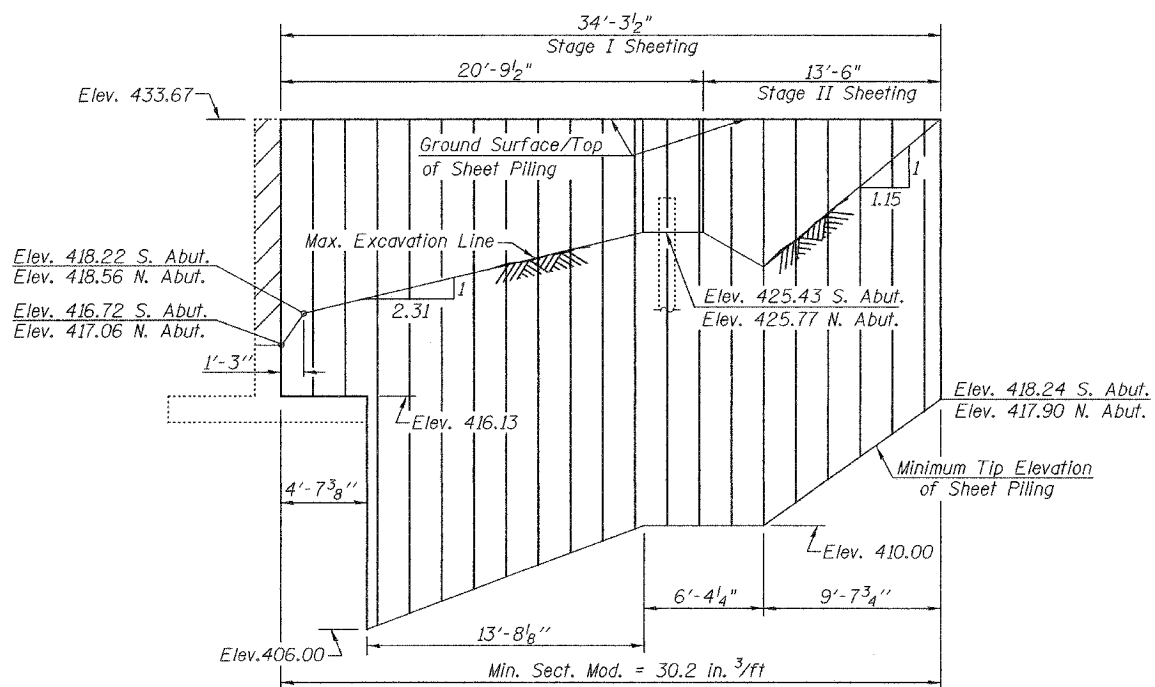
**STAGE I CONSTRUCTION**



**STAGE II REMOVAL**



**STAGE II CONSTRUCTION**

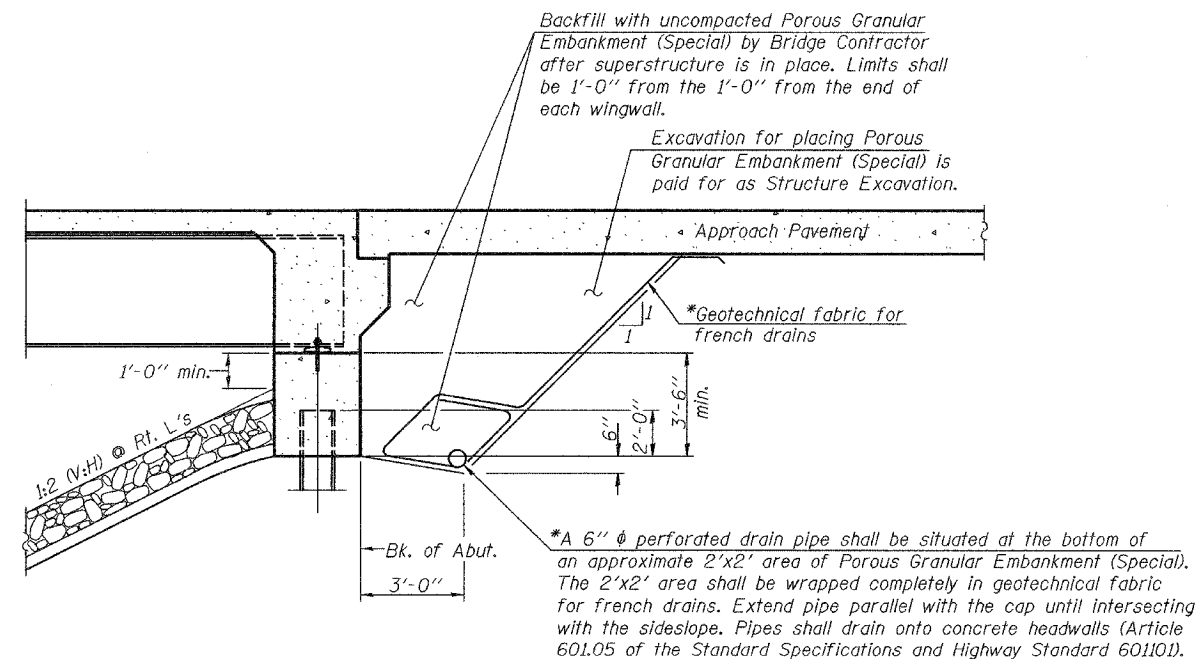


**ELEVATION**

(S. Abut. shown N. Abut. similar)

**TEMPORARY SHEET PILING DETAIL**

Notes: If the Contractor chooses to alter the temporary cantilevered sheet piling design requirements shown on the plans, a design submittal including plan details and calculations will be required for review and acceptance by the Engineer.  
Hard driving may be encountered during the sheet piling installation. The Contractor shall provide the appropriate driving equipment for the soil conditions indicated on the boring logs.  
To ensure stability of sheets driven to the top of the existing footing, the Contractor shall connect the first sheet to the existing abutment wall. This connection shall be approved by the Engineer and the cost included in the pay item "Temporary Sheet Piling."



**SECTION THRU INTEGRAL ABUTMENT**

(Horiz. dim. @ Rt. L's)

**STAGE CONSTRUCTION DETAILS**  
F.A.P. ROUTE 781 - SECTION 108B-1  
CRAWFORD COUNTY  
STATION 545+80.00  
STRUCTURE NO. 017-0030

DESIGNED	W. Beisner
CHECKED	Chi-Cheung Chau
DRAWN	R. Dalsin
CHECKED	C.C.C./S.J.B./S.M.R.

EXAMINED	December 13 2005
PASSED	Thomas J. Demagallibi ENGINEER OF BRIDGE DESIGN
	Ralph E. Anderson ENGINEER OF BRIDGES AND STRUCTURES