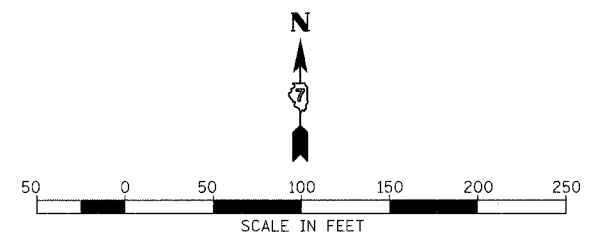
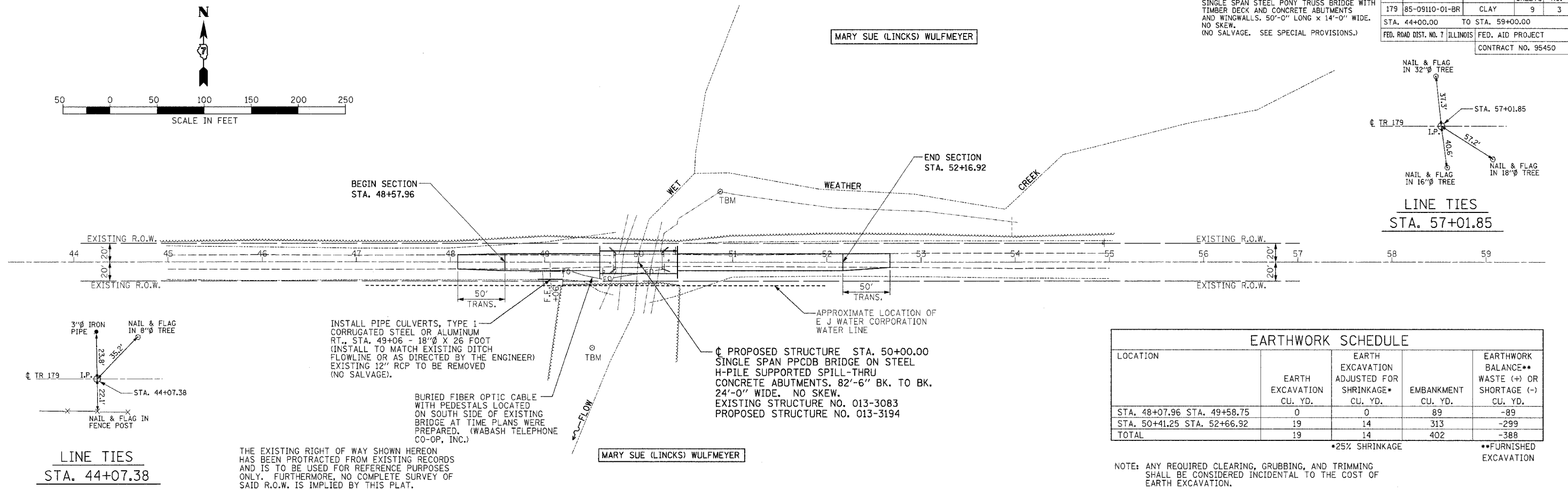


EXISTING STRUCTURE NO. 013-3083;  
SINGLE SPAN STEEL PONY TRUSS BRIDGE WITH  
TIMBER DECK AND CONCRETE ABUTMENTS  
AND WINGWALLS. 50'-0" LONG x 14'-0" WIDE.  
NO SKEW.  
(NO SALVAGE. SEE SPECIAL PROVISIONS.)

TR	SECTION	COUNTY	TOTAL SHEETS	SHEET NO.
179	85-09110-01-BR	CLAY	9	3
STA. 44+00.00		TO STA. 59+00.00		
FED. ROAD DIST. NO. 7		ILLINOIS		FED. AID PROJECT
CONTRACT NO. 95450				



PLAN	DATE
SURVEYED	BY
PLOTTED	BY
CHECKED	BY
REVISIONS	BY
NO. _____	DATE
NOTE BOOK NO. _____	
DATE FILED _____	

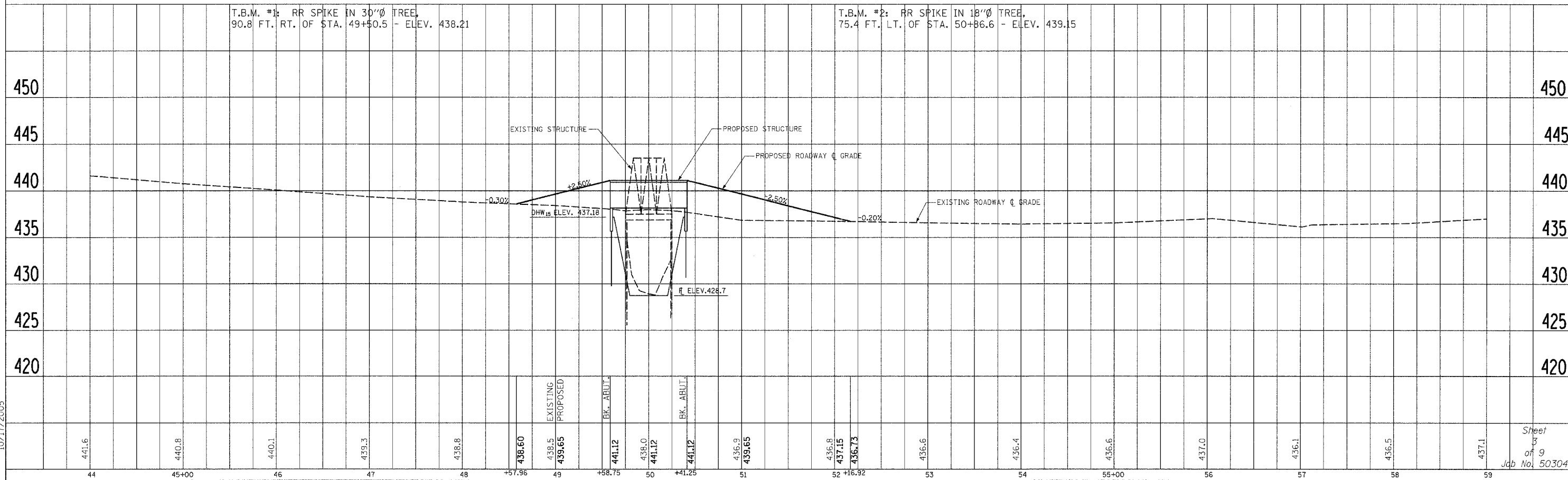


LOCATION	EARTH EXCAVATION CU. YD.	EARTH EXCAVATION ADJUSTED FOR SHRINKAGE* CU. YD.	EMBANKMENT CU. YD.	EARTHWORK BALANCE** WASTE (+) OR SHORTAGE (-) CU. YD.
STA. 48+07.96 STA. 49+58.75	0	0	89	-89
STA. 50+41.25 STA. 52+66.92	19	14	313	-299
TOTAL	19	14	402	-388

\*25% SHRINKAGE      \*\*FURNISHED EXCAVATION

NOTE: ANY REQUIRED CLEARING, GRUBBING, AND TRIMMING SHALL BE CONSIDERED INCIDENTAL TO THE COST OF EARTH EXCAVATION.

PROFILE	DATE
SURVEYED	BY
PLOTTED	BY
CHECKED	BY
REVISIONS	BY
NO. _____	DATE
NOTE BOOK NO. _____	
DATE FILED _____	



10/17/2005