

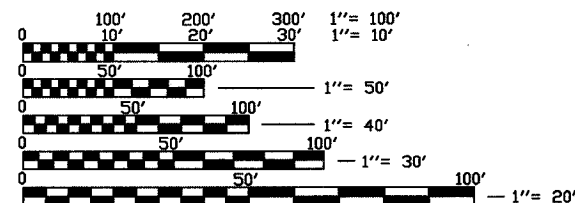
F.A. RTE.	SECTION	COUNTY	TOTAL SHEETS	SHEET NO.
	99-00013-00-HP	JERSEY	17	1
FED. ROAD DIST. NO. ILLINOIS FED. AID PROJECT				
CONTRACT NO. 97262				

STATE OF ILLINOIS  
DEPARTMENT OF TRANSPORTATION  
DIVISION OF HIGHWAYS  
PLANS FOR PROPOSED  
PUBLIC RESTROOM  
CITY OF GRAFTON  
SCENIC BYWAY PROGRAM  
SECTION NO. 99-00013-00-HP  
PROJECT NO. SB-IL-99-9805(002)  
JERSEY COUNTY  
C-98-118-99

INDEX OF SHEETS

1. COVER SHEET
2. G1.0 QUANTITY SHEET
3. A0.0 GENERAL BUILDING SPECIFICATIONS
4. A1.0 COMPOSITE SITE/BUILDING PLAN WITH DOCKS
5. A1.1 ARCHITECTURAL SITE PLAN
6. A1.2 SITE DETAILS
7. A2.0 FLOOR PLAN
8. A2.1 ENLARGED PLAN OF RESTROOM/SHOWER BUILDING AND SCHEDULES
9. A4.0 EXTERIOR ELEVATIONS
10. A4.1 BUILDING SECTION ELEVATION PLAN & DETAILS
11. A5.0 ROOF FRAMING PLAN
12. E1.0 LIGHTING PLAN
13. E1.1 POWER PLAN
14. M1.0 MECHANICAL PLAN
15. P1.0 PLUMBING PLAN
16. MARINA PLATFORM DETAILS *Added 1-11-06*
17. MARINA PLATFORM DETAILS STANDARDS

424001-04  
702001-05



FULL SIZE PLANS HAVE BEEN PREPARED USING STANDARD ARCHITECTURAL SCALES, REDUCED SIZED PLANS WILL NOT CONFORM TO STANDARD SCALES, IN MAKING MEASUREMENTS ON REDUCED PLANS, THE ABOVE SCALES MAY BE USED.

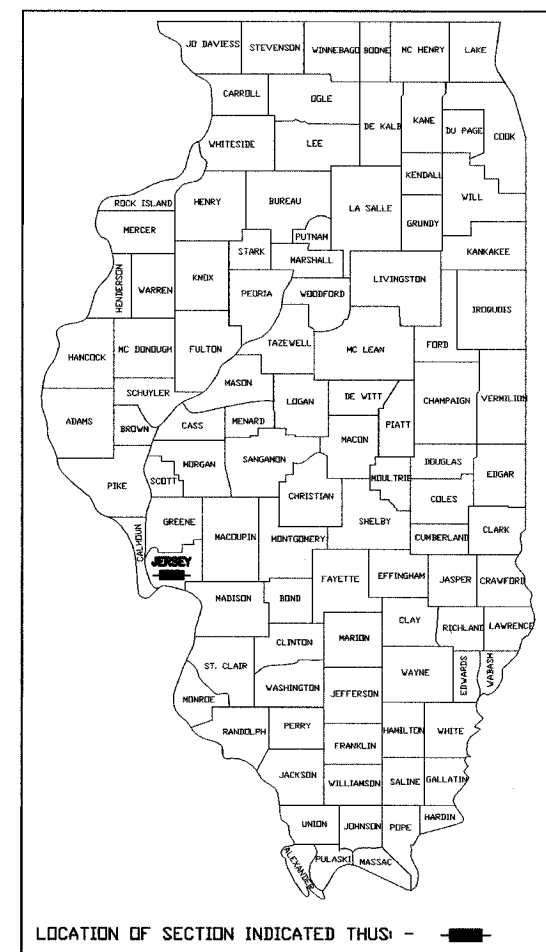
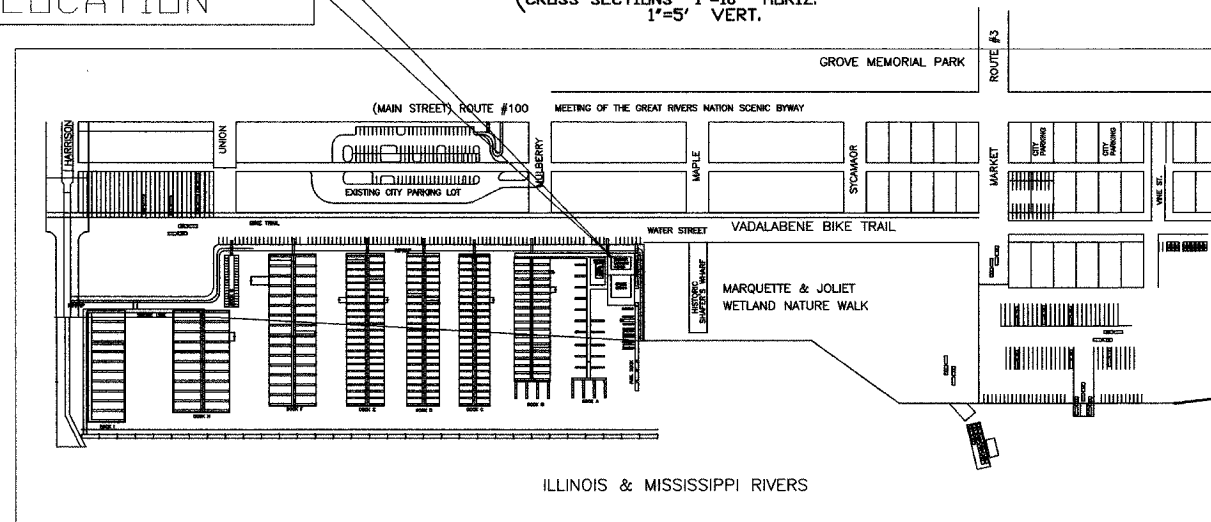
J.U.L.I.E.  
JOINT UTILITY LOCATION INFORMATION FOR EXCAVATION  
1-800-892-0123

DESIGN DESIGNATION  
N/A

CONTRACT NO. 97262

PROJECT LOCATION

SCALES  
 PLAN 1"=20'  
 PROFILE HORIZ. 1"=20'  
 PROFILE VERT. 1"=5'  
 CROSS SECTIONS 1"=10' HORIZ.  
 1"=5' VERT.

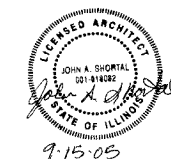


STATE OF ILLINOIS  
DEPARTMENT OF TRANSPORTATION  
DIVISION OF HIGHWAYS

APPROVED SEPT. 20 2005  
*John R. Mack*  
LOCAL AGENCY OFFICIAL

PASSED Sept 26 2005  
*Denise Oberlin*  
LOCAL ROADS AND STREETS ENGINEER

APPROVED 9-26 2005  
*Mary C. Lamie*  
MARY C. LAMIE, P.E.  
DEPUTY DIRECTOR OF HIGHWAYS  
REGION FIVE ENGINEER



LOCATION MAP  
SCALE: 1" = 750'  
GROSS LENGTH OF PROJECT: N/A  
NET LENGTH OF PROJECT: N/A