

| F.A. RTE. | SECTION | COUNTY | TOTAL SHEETS | SHEET NO. |
|-----------|---------|---------|--------------|-----------|
| VAR | VARIOUS | VARIOUS | 42 | 1 |

*D-9 CONT. MAINT. FY 06-3

FOR INDEX OF SHEETS, SEE SHEET NO. 3

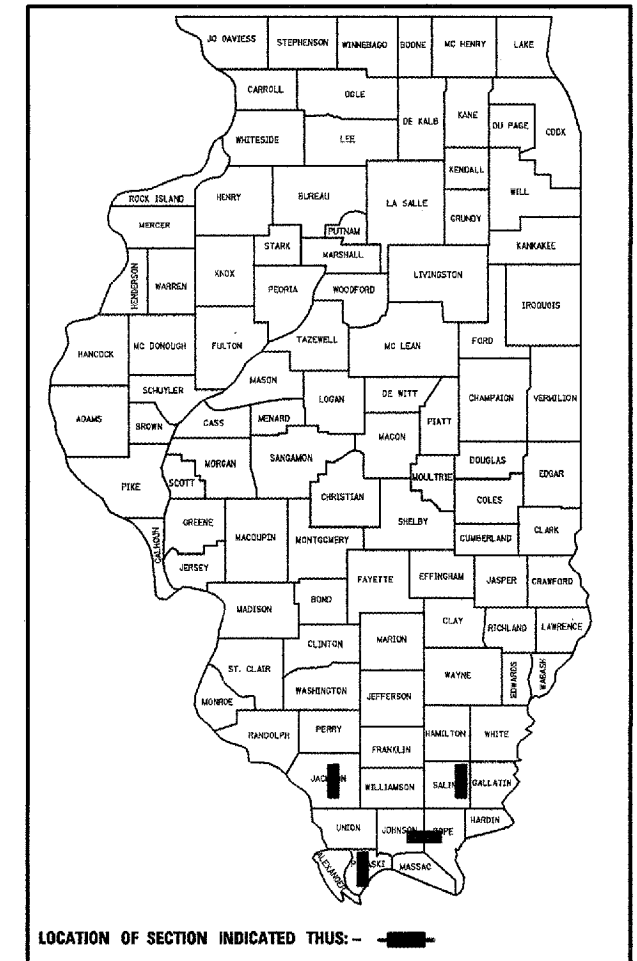
STATE OF ILLINOIS
DEPARTMENT OF TRANSPORTATION
DIVISION OF HIGHWAYS

**PROPOSED
HIGHWAY PLANS**

VARIOUS ROUTES
SECTION D-9 CONT. MAINT. FY 06-3

VARIOUS COUNTIES
C-99-035-05

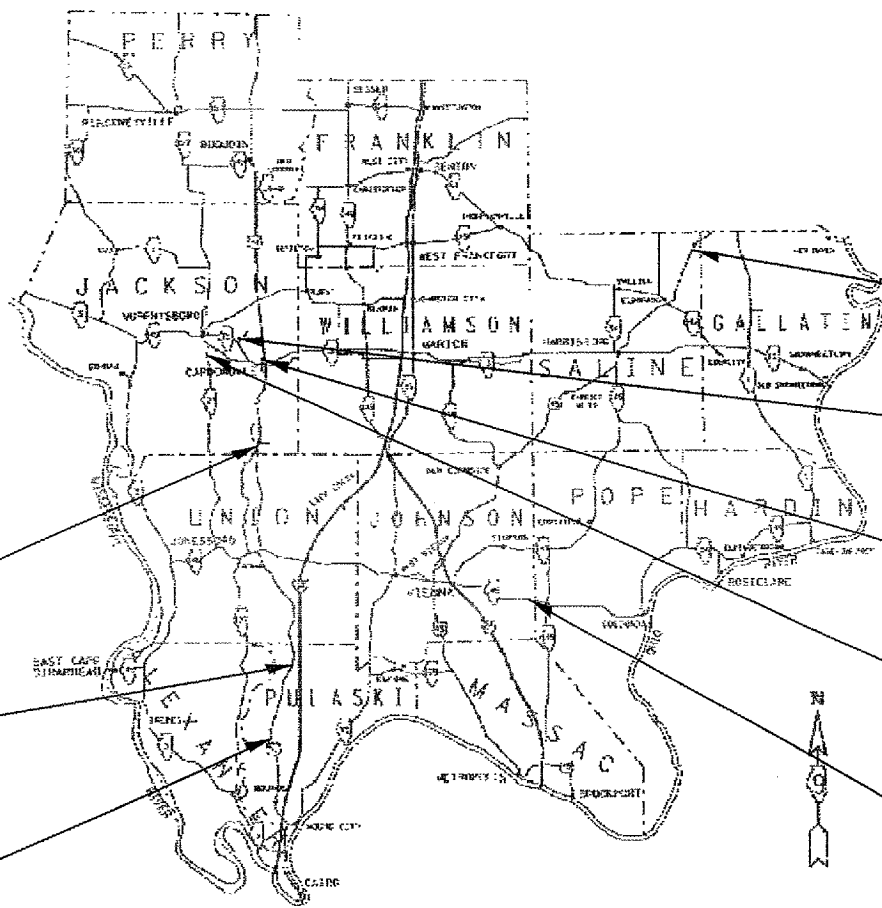
D-99-029-05



LOCATION OF SECTION INDICATED THUS: - [rectangle] -

| | |
|--|---|
| <p>OLD US 51 (FAS 2936) LOCATION #1 TRAFFIC DATA (2003) (2026)</p> <p>PC= 1,050 1,315 SU= 150 190 MU= 50 65 ADT= 1,250 1,570</p> | <p>US 51 (FAP 322) LOCATION #5 TRAFFIC DATA (2003) (2026)</p> <p>PC= 6,975 8,765 SU= 275 345 MU= 150 190 ADT= 7,400 9,300</p> |
| <p>OLD US 51 (FAS 1911) LOCATION #2 TRAFFIC DATA (2002) (2026)</p> <p>PC= 800 1,010 SU= 90 115 MU= 10 15 ADT= 900 1,140</p> | <p>AIRPORT ROAD (FAU 9729) LOCATION #6 TRAFFIC DATA (2002) (2026)</p> <p>PC= 900 1,145 SU= 40 50 MU= 10 15 ADT= 950 1,210</p> |
| <p>US 45 (FAP 332) LOCATION #3 TRAFFIC DATA (2003) (2026)</p> <p>PC= 3,200 4,020 SU= 275 345 MU= 425 535 ADT= 3,900 4,900</p> | <p>IL 146 (FAP 885) LOCATION #7 TRAFFIC DATA (2003) (2026)</p> <p>PC= 1,600 2,250 SU= 60 85 MU= 40 55 ADT= 1,700 2,390</p> |
| <p>OLD US 51 (FAS 2936) LOCATION #4 TRAFFIC DATA (2003) (2026)</p> <p>PC= 900 1,135 SU= 75 95 MU= 25 30 ADT= 1,000 1,260</p> | <p>IL 127 (FAS 1909) LOCATION #8 TRAFFIC DATA (2003) (2026)</p> <p>PC= 1,900 2,680 SU= 160 225 MU= 40 55 ADT= 2,100 2,960</p> |

| COUNTIES: | TOWNSHIPS: | LOCATION: |
|-----------|-------------|-----------|
| JACKSON | MAKANDA | 2 |
| | CARBONDALE | 5 |
| | MURPHYSBORO | 6 |
| | POMONA | 8 |
| JOHNSON | GRANTSBURG | 7 |
| POPE | WEBSTER | 7 |
| | COLUMBUS | 7 |
| PULASKI | ULLIN | 1 |
| | PULASKI | 4 |
| SALINE | RECTOR | 3 |



LOCATION #3
US 45 (FAP 332)
Sta. 723+24 to Sta. 755+24
NET LENGTH: 1,040 FEET (0.20 MILES)
GROSS LENGTH: 3,200 FEET (0.61 MILES)

LOCATION #6
AIRPORT ROAD (FAU 9729)
Sta. 1+40 to Sta. 8+28
Sta. 18+00 to Sta. 39+46
NET LENGTH: 2,834 FEET (0.54 MILES)
GROSS LENGTH: 3,806 FEET (0.72 MILES)

LOCATION #5
US 51 (FAP 322)
Sta. 68+89 to Sta. 71+88
NET LENGTH: 299 FEET (0.06 MILES)
GROSS LENGTH: 299 FEET (0.06 MILES)

LOCATION #8
IL 127 (FAS 1909)
IL 127/Grammer Road Intersection

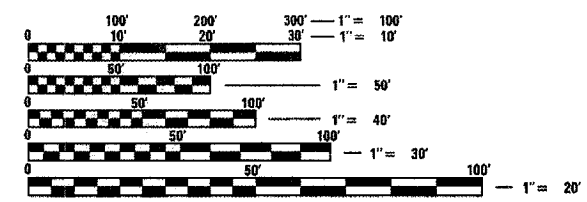
LOCATION #7
IL 146 (FAP 885)
Sta. 533+00 to Sta. 535+50 LT
Sta. 560+20 to Sta. 570+20 LT
Sta. 607+27 to Sta. 612+00 LT
Sta. 626+00 to Sta. 630+00 LT
Sta. 649+00 to Sta. 659+00 RT
Sta. 761+00 to Sta. 777+00 RT
Sta. 876+00 to Sta. 894+50 LT
NET LENGTH: 6,523 FEET (1.24 MILES)
GROSS LENGTH: 36,150 FEET (6.85 MILES)

LOCATION #2
OLD US 51 (FAP 1911)
Sta. 417+40 to Sta. 452+16.8 BK =
Sta. 452+97.5 AH to Sta. 471+42
NET LENGTH: 5,321.3 FEET (1.00 MILES)
GROSS LENGTH: 5,321.3 FEET (1.00 MILES)

LOCATION #1
OLD US 51 (FAP 2936)
Sta. 749+00 to Sta. 768+00
NET LENGTH: 1,700 FEET (0.32 MILES)
GROSS LENGTH: 1,700 FEET (0.32 MILES)

LOCATION #4
OLD US 51 (FAP 2936)
Sta. 980+86 to Sta. 1014+86
NET LENGTH: 3,400 FEET (0.64 MILES)
GROSS LENGTH: 3,400 FEET (0.64 MILES)

NET LENGTH OF PROJECT: 21,117.3 FEET (4.00 MILES)
GROSS LENGTH OF PROJECT: 53,876.3 FEET (10.20 MILES)



FULL SIZE PLANS HAVE BEEN PREPARED USING STANDARD ENGINEERING SCALES. REDUCED SIZED PLANS WILL NOT CONFORM TO STANDARD SCALES. IN MAKING MEASUREMENTS ON REDUCED PLANS, THE ABOVE SCALES MAY BE USED.

J.U.L.I.E.
JOINT UTILITY LOCATION INFORMATION FOR EXCAVATION
1-800-892-0123

CONTRACT NO. 98924

STATE OF ILLINOIS
DEPARTMENT OF TRANSPORTATION
DIVISION OF HIGHWAYS

SUBMITTED Nov 1 20 05

Mary C. Lemie
DEPUTY DIRECTOR OF HIGHWAYS, REGION ENGINEER

December 9, 20 05
Mike Hene/10
ENGINEER OF DESIGN AND ENVIRONMENT

December 9, 20 05
Eric Hain/10
DEPUTY DIRECTOR OF HIGHWAYS, CHIEF ENGINEER

**PRINTED BY THE AUTHORITY
OF THE STATE OF ILLINOIS**