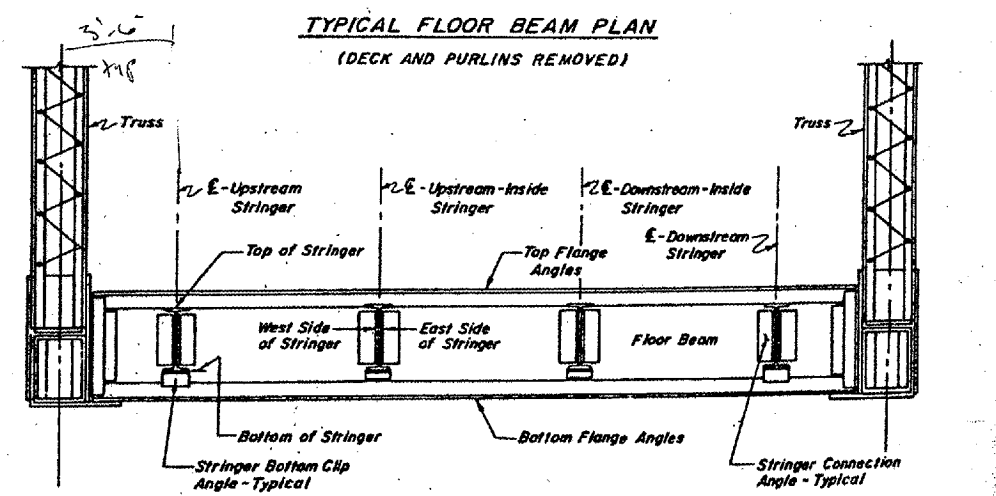
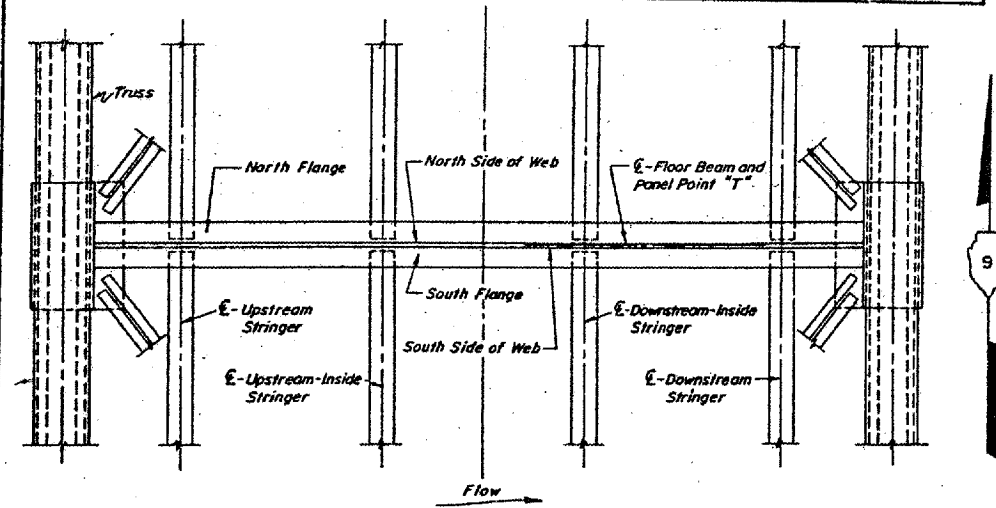


TRUSS SPANS - FLOOR BEAM REPAIR SCHEDULE

FLOOR BEAM AT PANEL POINT NO.	DESCRIPTION	REMARKS	FLOOR BEAM AT PANEL POINT NO.	DESCRIPTION	REMARKS	FLOOR BEAM AT PANEL POINT NO.	DESCRIPTION	REMARKS
1	South bottom flange angle has thin area at several locations along the entire length. See detail (13/45) for repair.	X	30 CONT.	The north side of the web has thin area along the vertical connection angle near the west side of the downstream stringer. See detail (14/45) for repair.	X	87	North top flange angle has thin areas from 0 to 1' of the upstream & downstream ends. Remove angle - See expansion joint details sheets 71, 84 and 85. Also, add cover plate to bottom flange. See detail (13/44) for repair.	X
3	The south side of the web has thin area at the bottom near the west side of the upstream stringer. See Note "1," This Sheet.		34	The south side of the web has thin area at the top and bottom near the east side of the downstream stringer. See detail (14/45) for repair.		92	The north side of the web has thin area at the bottom at several locations for entire length. See Note "1," This Sheet. Also, add cover plate to bottom flange. See detail (13/44) for repair.	
4	The north side of the web has thin area at the bottom near the east side of the downstream stringer. See Note "1," This Sheet.		38	The north side of the web has thin area at the bottom at several locations along the entire length. See Note "1," This Sheet. Also, add a cover plate to bottom flange. See detail (13/44) for repair.		94	The north side of the web has thin area at the top near the downstream-inside stringer. See Note "1," This Sheet.	
6	The south side of the web has thin area at the top near the west side of the upstream stringer. See Note "1," This Sheet.		47	North bottom flange angle has thin areas at all the stringer locations. See detail (13) for repair.		96	The south side of the web has thin area at the bottom near the east side of the upstream stringer. See Note "1," This Sheet.	
14	The north side of the web has thin area at the bottom near the east side of the downstream stringer. See detail (14/45) for repair.		49	The north side of the web has thin area at the top near the upstream stringer. See Note "1," This Sheet.				
15	South bottom flange angle has thin area near mid-span of the floor beam. See detail (13/45) for repair.		55	North top flange angle has thin areas from 1' to 3' of the upstream & downstream ends. Remove angle - See expansion joint details, sheets 71, 84 and 85. The south side of the web has thin area at several locations along the entire length. See Note "1," This Sheet.				
21	North top flange angle has thin areas from 1' to 6' of upstream & downstream ends. South top flange angle has thin areas from 1' to 6' of upstream & downstream ends. See detail (11/45) for repair.		66	South bottom flange angle has thin area at several locations along the entire length. See detail (13/44) for repair.				
	South bottom flange angle has thin areas from 1' to 6' of upstream & downstream ends. See detail (13/45) for repair.		74	The north side of the web has thin area at the bottom near the downstream-inside stringer. See Note "1," This Sheet.				
23	The south side of the web has thin area at the bottom near the bottom flange angle at several locations along the entire length. See Note "1," This Sheet. Also, add a cover plate to bottom flange. See detail (13/44) for repair.		76	The south side of the web has thin area at the top near the upstream stringer. See Note "1," This Sheet.				
26	North top flange angle has thin area from upstream end to mid-span. See detail (10/45) for repair.		78	The north side of the web has thin areas along the vertical connection angle near the east and west sides of the upstream-inside stringer. See detail (14/45) for repair.				
30	The north side of the web has thin area at the top near the east side of the upstream-inside stringer. See Note "1," This Sheet.		79	The south side of the web has thin area at the bottom near the west side of the upstream stringer. See Note "1," This Sheet.				
	The north side of the web has thin area at the top near the west side of the downstream-inside stringer. See Note "1," This Sheet.		83	The north side of the web has thin area at several locations along the entire length. See Note "1," This Sheet.				
	The north side of the web has thin area at the top near the west side of the downstream-inside stringer. See Note "1," This Sheet.			North bottom flange angle has thin area at several locations along the entire length. See detail (13) for repair.				
				The north side of the web has thin area along the vertical connection angle near the east side of the downstream-inside stringer. See detail (14/45) for repair.				



FLOOR BEAM REFERENCE KEY PLAN AND ELEVATION

Note "1":
Contractor to clean the vicinity of all thin and deteriorated areas and remove all rust, foreign material and all old paint down to the bare metal. (Cost incidental to Lump Sum Bid Price for "Cleaning and Painting")

NOTE: Work This Sheet with Sheets 44, 45, 46, 47, 48, 49, 50, 51, 52, 53, 54, 55, 56, 57, 58, 59, 60, 61, 62, 63, 64, 65, 66, 67, 68, 69, 70, 71, 72, 73, 74, 75, 76, 77, 78, 79, 80, 81, 82, 83, 84, 85, 86, 87, 88, 89, 90, 91, 92, 93, 94, 95, 96, 97, 98, 99, 100.

DESIGNED *[Signature]*
CHECKED *[Signature]*
DRAWN *[Signature]*
CHECKED *[Signature]*

Detail Number
Sheet Number
LEGEND

BRIDGE NO. 1
STRUCTURE 002-0005
FOR INFORMATION ONLY

TRUSS SPANS
FLOOR BEAM REPAIR SCHEDULE
F.A.U.S. Rte. 9811 (U.S. 60 & 62)
S.B.I. 150 SECTION 138D-BR
ALEXANDER CO., IL. MISSISSIPPI CO., MO.
STATION 28 + 13.08