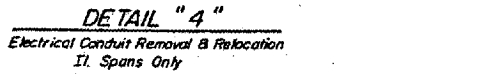
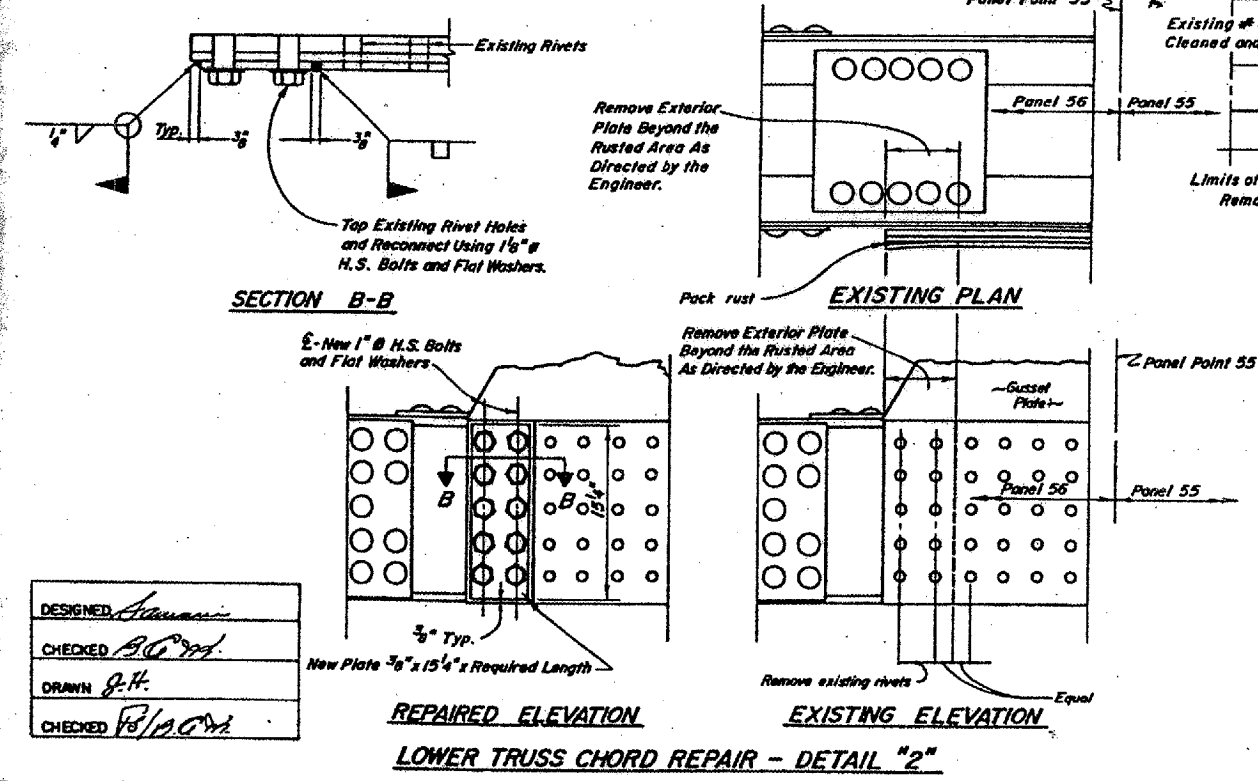
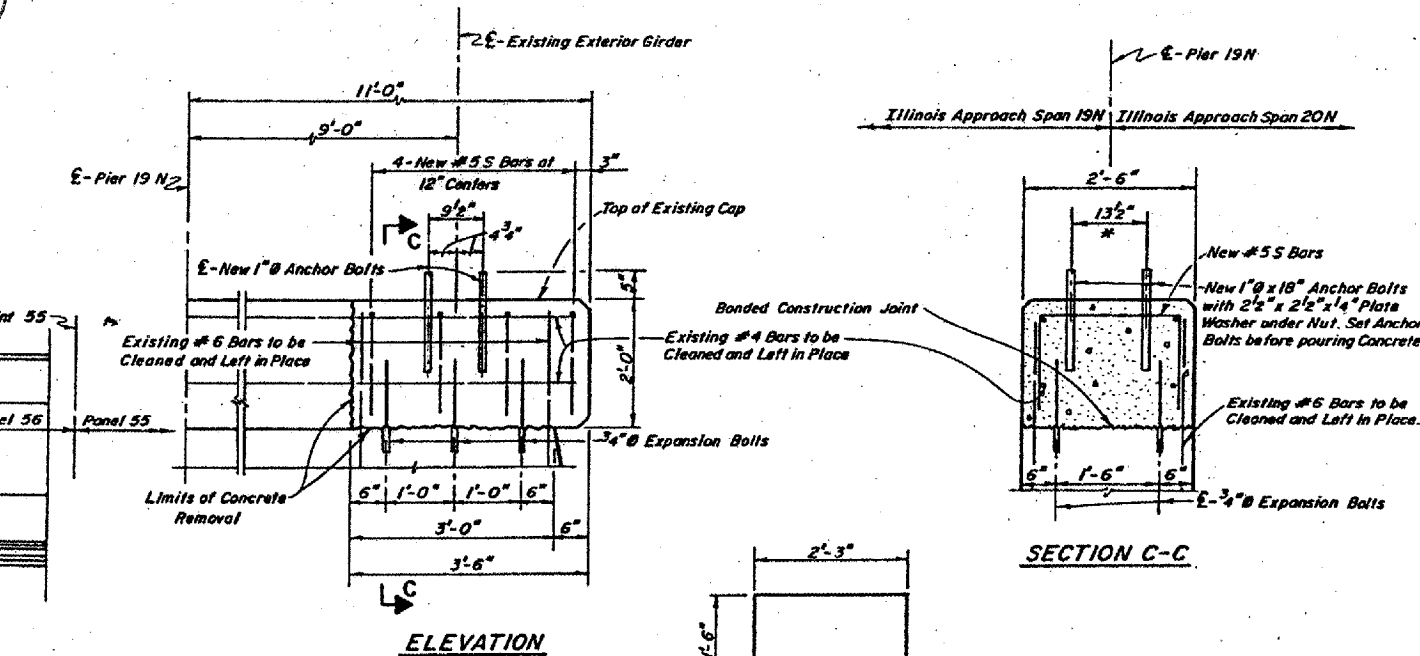
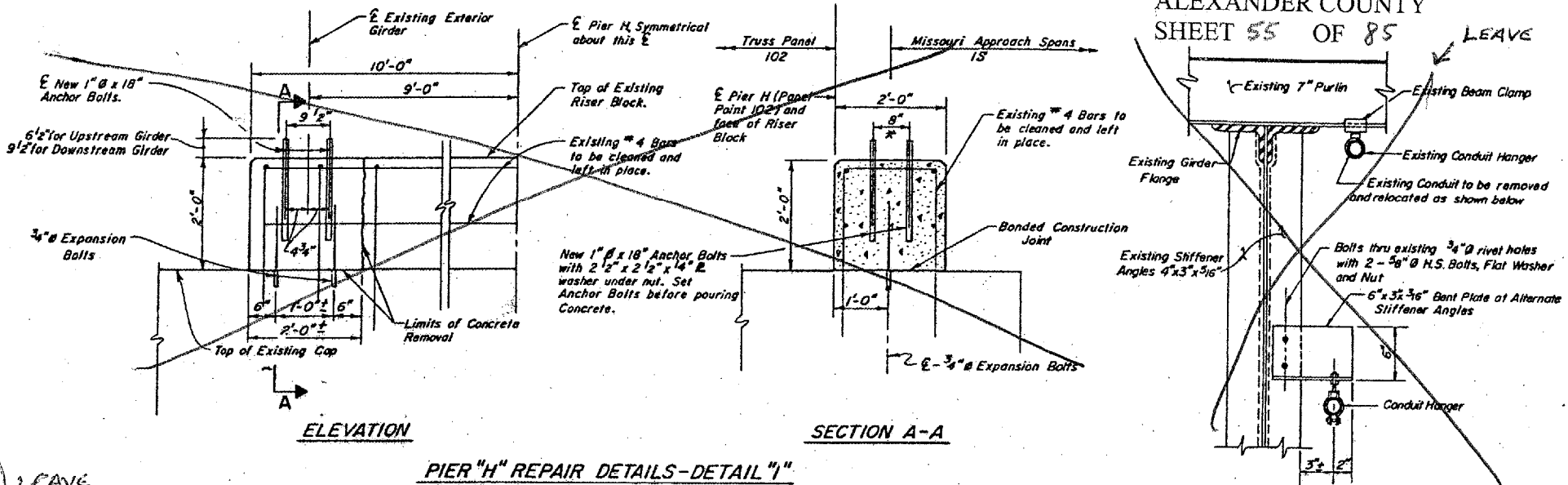


\* This Work Shall Be Paid for by the Lump Sum Bid Price for "Miscellaneous Repair."

STATE OF ILLINOIS  
DEPARTMENT OF TRANSPORTATION

CONTRACT 98939  
U.S. RTE. 60 & U.S. RTE. 62  
(138D-BR) P-1  
ALEXANDER COUNTY  
SHEET 55 OF 85 LEAVE

* MISCELLANEOUS REPAIR SCHEDULE			
SPAN NO. OR PANEL NO.	PIER NO. OR PANEL POINT NO.	DESCRIPTION	REPAIR REQUIREMENTS
15	H	The West and East ends of Concrete Bearing Block for the approach spans are leaching and spalling.	See Detail "1", This Sheet.
1	O	The Electrical Conduit is loose from the North Abutment to Panel Point No. 1.	Reconnect as directed by the Engineer.
24	23	The 2 1/2" Ø Pin of the upstream lower slip chord connection does not have adequate clearance from the edge of 25" x 7 1/2" slot.	Increase the length of slot to the South by 1 1/2".
56	55	Slip Connection at the Upstream side has pack rust between the two outside splice plates.	See Detail "2", This Sheet.
	19N	The West End of the Pier Cap is badly deteriorated.	See Detail "3", This Sheet.
		Conduit Hangers for Navigational Lighting are Broken or Missing.	Provide and Install New Hangers as directed by the Engineer.
		Electrical Conduit is hanging from west end of Existing Purlins. (Note Purlins are being removed.)	Remove and Relocate Existing Conduit. See Detail "4", This Sheet. II. Approach only.



\* May Change - Position Anchor Bolts at Center of Existing 3" Slots of the Expansion Girder End at 50' E.

DESIGNED: *[Signature]*  
CHECKED: *[Signature]*  
DRAWN: *[Signature]*  
CHECKED: *[Signature]*

BRIDGE NO. 1  
STRUCTURE 002-0005  
FOR INFORMATION ONLY

MISCELLANEOUS REPAIR SCHEDULE  
F.A.U.S. Rte. 9811 (U.S. 60 & 62)  
S.B.I. 150 SECTION 138 D-BR  
ALEXANDER CO., IL. MISSISSIPPI CO., MO.  
STATION 28 + 13.08