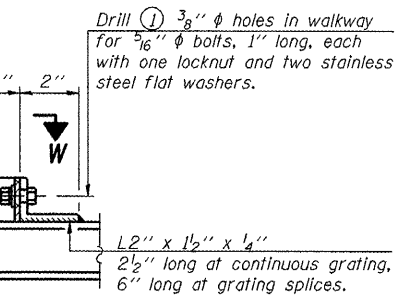
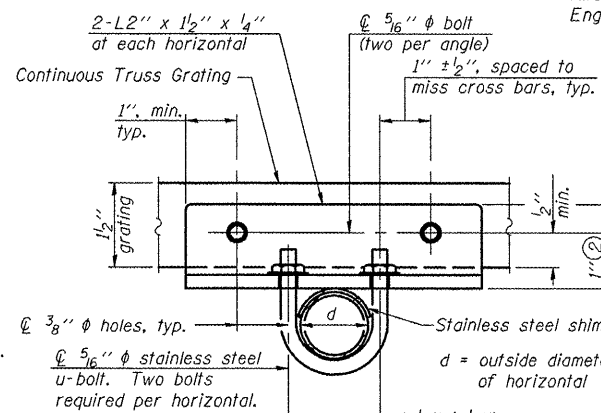


SECTION W-W



DETAIL W

(Walkway grating)



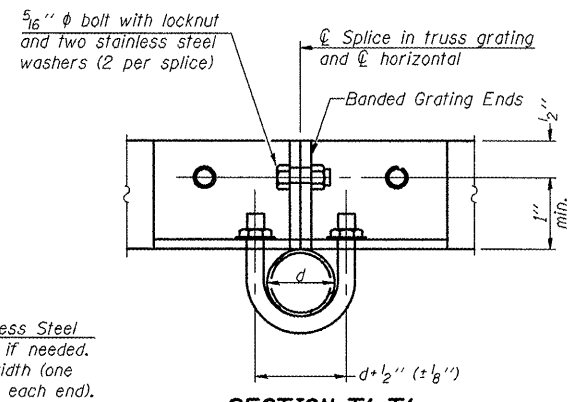
SECTION T-T

**SPECIFICATIONS FOR STANDARD ALUMINUM GRATING**

Main Bearing Bars (MBB) shall be 3/16" x 1 1/2" on 1 3/16" centers and conform to ASTM B221 Alloy 6061-T6.  
 Cross bars (CB) shall be 3/16" x 1 1/2" on 4" centers and conform to ASTM B221 Alloy 6063-T5 or 6061-T6.

OR

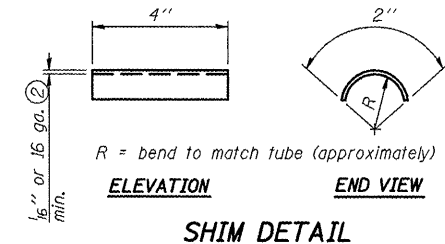
Aluminum Grating with modified "I" sections for main bearing bars shall meet the following requirements:  
 Main bars shall conform to ASTM B221 Alloy 6061-T6 and have a minimum section modulus equal to 0.0705 in.<sup>3</sup> per bar, a depth of 1 1/2", spaced on 1 3/16" centers.  
 Cross bars shall conform to ASTM B221 Alloy 6063-T5 or T-42 and spaced on 4" centers.



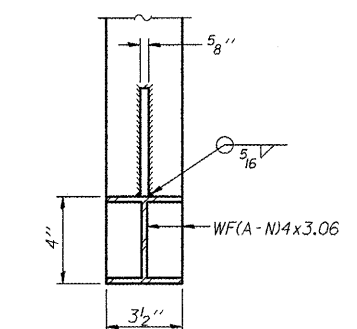
SECTION T'-T'

DETAIL T'

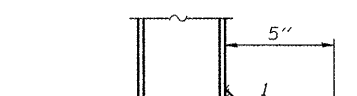
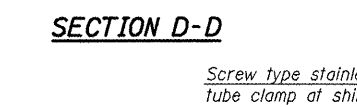
(Truss grating splice)  
 Details not shown same as Detail T.  
 Alternate materials may be used subject to the Engineer's review and approval.



SHIM DETAIL



SECTION B-B



DETAIL D

- Drilling holes in grating may be done in shop or field, based on Contractor's preference and subject to accurate alignment.
- Stainless steel shims shall be placed as shown in Detail T if needed to compensate for alignment variations between horizontal and diagonal pipes beyond adjustment provided by angles. Thicker shims may be used subject to shims performing properly.
- If Handrail Joint present, weld angle to WF(A-N)4 and 1/4" extension bars. (See Base Sheet OSC-A-8.)
- 1/8" x 1/2" x 2" welded to handrail posts to protect locations that contact grating.
- Tube to grating gap may vary from 0 to 1/2", max. to align walkway, allow for camber, etc.
- Based on actual sign height. D<sub>s</sub>, given on OSC-A-1.

Structure Number	Station	A	⑥ B	C	⑥ D *
5 C 092 1074 L208.35	103+10		2'-0"	5'-6"	8'-0"
					& VAR.
5 C 092 1074 R214.25	1923+65		3'-6"	5'-6"	9'-6"
					& VAR.

\*See also "Sign Truss Mounting Details" Sheet 12 for the information needed to determine the variable walkway support and sign support lengths.

OSC-A-7 9-15-11