

SCHEDULE OF QUANTITIES DEWITT COUNTY – INDIVIDUAL LOCATIONS

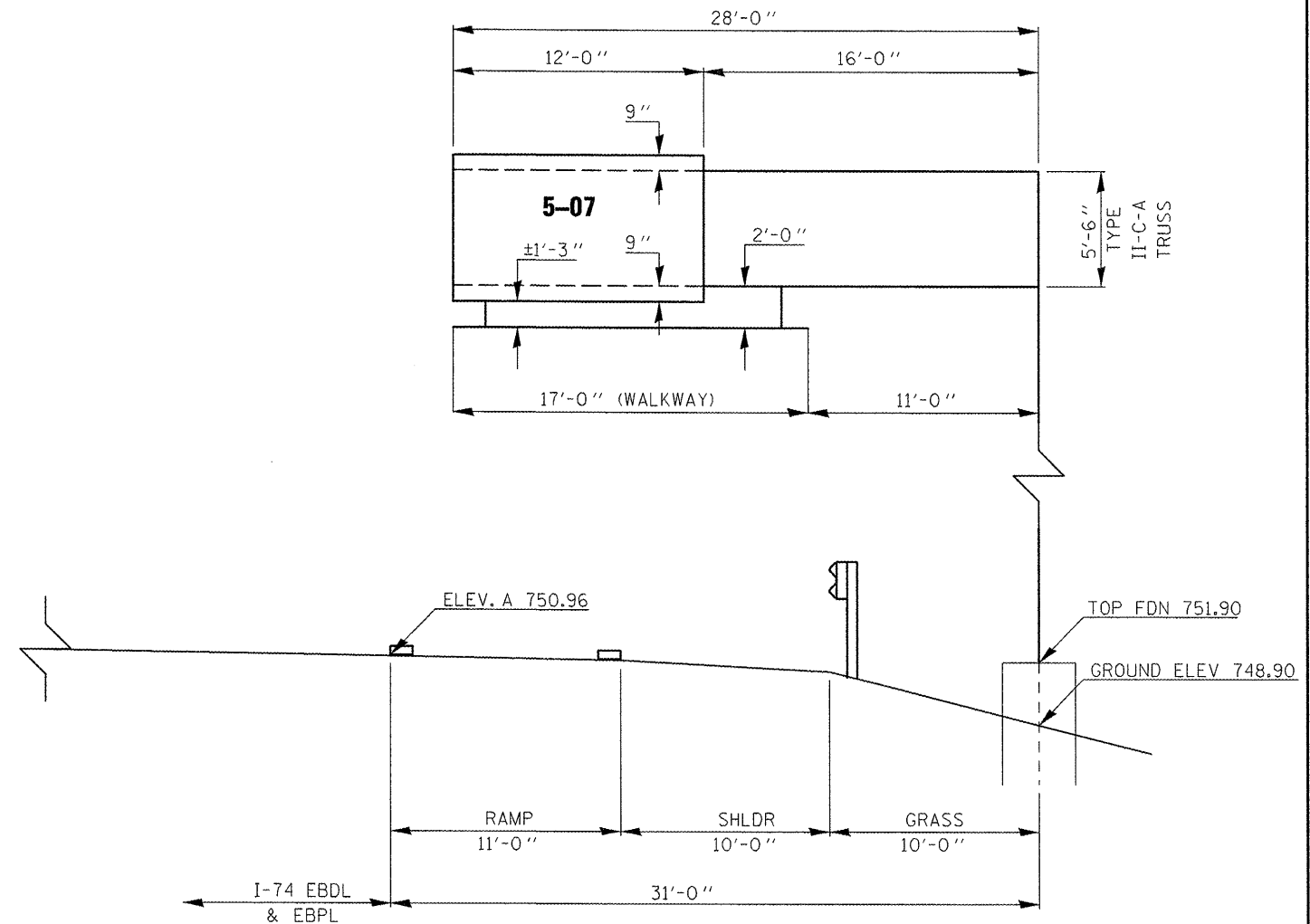
Location No.	5-07		
Structure No.	5 C 020 I074 R155.62		
County / Route	DEWITT CO. - I-74 EB - Farmland Rest Area - West of Farmer City		
Scope of Work	This overhead cantilever is being replaced on a new drilled shaft foundation.		
CODE NUMBER	PAY ITEM	UNIT	QUANTITY
70100205	TRAFFIC CONTROL AND PROTECTION, STANDARD 701401	EACH	1.00
70100420	TRAFFIC CONTROL AND PROTECTION, STANDARD 701411	EACH	1.00
72000300	SIGN PANEL - TYPE 3	SQFT	84.00
72400330	REMOVE SIGN PANEL - TYPE 3	SQFT	47.50
73301840	OVERHEAD SIGN STRUCTURE WALKWAY, CANTILEVER, TYPE A	FOOT	17.00
73302170	OVERHEAD SIGN STRUCTURE - CANTILEVER, TYPE II-C-A (36" X 5'-6")	FOOT	28.00
73400200	DRILLED SHAFT CONCRETE FOUNDATIONS	CUYD	9.00
73600200	REMOVE OVERHEAD SIGN STRUCTURE - CANTILEVER	EACH	1.00
73700300	REMOVE CONCRETE FOUNDATION - OVERHEAD	EACH	1.00
X7015005	CHANGEABLE MESSAGE SIGN	CAL DA	6.00
X8040310	ELECTRICAL SERVICE DISCONNECT	EACH	1.00

Pay Item for CMS is for the advanced interstate notice only. CMS shown on Standards are included in the cost of the Standard.

Location No.	5-08		
Structure No.	5 C 020 I074 L156.44		
County / Route	DEWITT CO. - I-74 WB - Farmland Rest Area - West of Farmer City		
Scope of Work	Replace green sign & remove electrical. Cantilever structure to remain in place. Lights, conduit, & other electrical items to be removed from truss. Cap conduit stub.		
CODE NUMBER	PAY ITEM	UNIT	QUANTITY
70100205	TRAFFIC CONTROL AND PROTECTION, STANDARD 701401	EACH	1.00
70100420	TRAFFIC CONTROL AND PROTECTION, STANDARD 701411	EACH	1.00
72000300	SIGN PANEL - TYPE 3	SQFT	84.00
72400330	REMOVE SIGN PANEL - TYPE 3	SQFT	47.50
X7015005	CHANGEABLE MESSAGE SIGN	CAL DA	3.00
X8040310	ELECTRICAL SERVICE DISCONNECT	EACH	1.00

Pay Item for CMS is for the advanced interstate notice only. CMS shown on Standards are included in the cost of the Standard.

SIGN TRUSS MOUNTING DETAIL – DEWITT COUNTY 5 C 020 I074 R155.62



TEMP. BENCHMARK = CHIS. SQUARE ON SW SIDE OF EXISTING FDN. = 748.50 (FROM 1993 PLANS)

FILE NAME =	USER NAME = ceer-lockjd	DESIGNED - JAL	REVISED -
es:\pwwork\pwwork\ceer-lockjd\02669571\046179-sht-detailed.dgn		DRAWN -	REVISED -
		CHECKED -	REVISED -
		DATE - 04/26/11	REVISED -

**STATE OF ILLINOIS
DEPARTMENT OF TRANSPORTATION**

**SCHEDULE OF QUANTITIES & SIGN TRUSS MOUNTING DETAILS
DEWITT COUNTY**

SCALE: SHEET NO. OF SHEETS STA. TO STA.

F.A. RTE.	SECTION	COUNTY	TOTAL SHEETS	SHEET NO.
•	••	Various	178	46
CONTRACT NO. 46179				
ILLINOIS FED. AID PROJECT				

•VARIOUS COUNTIES
••D-5 OVD SIN STR REPL 2012-06