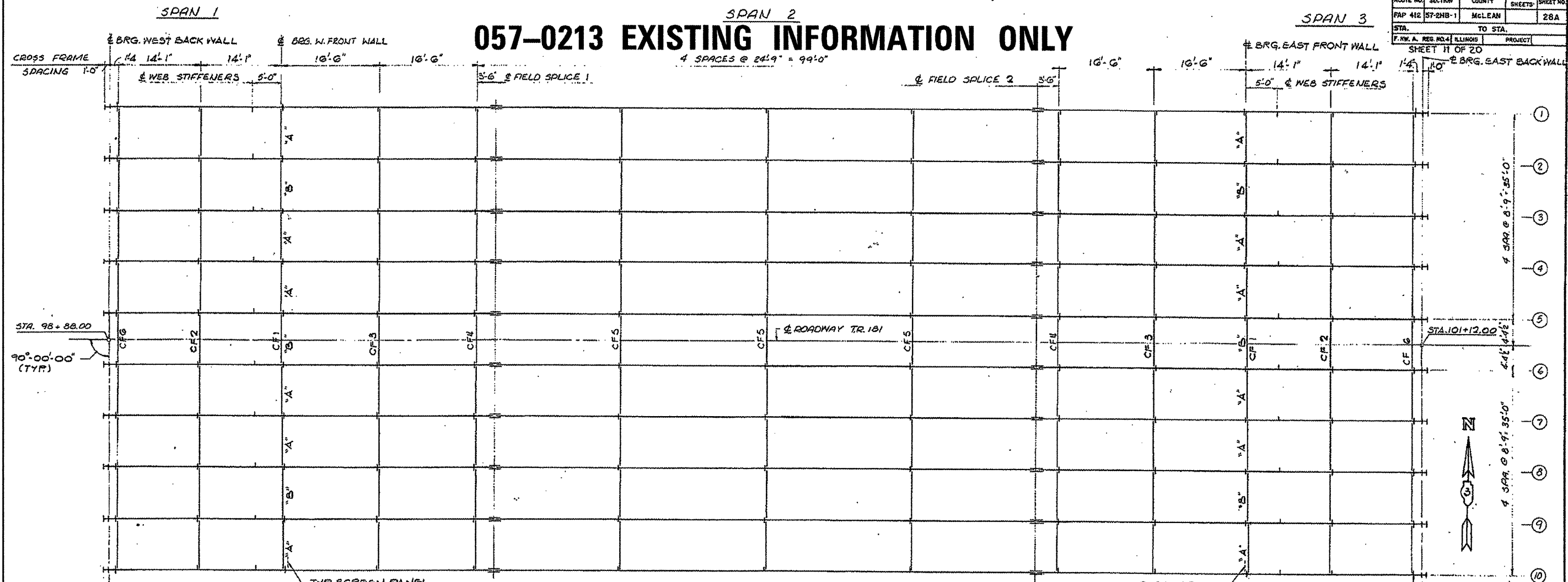


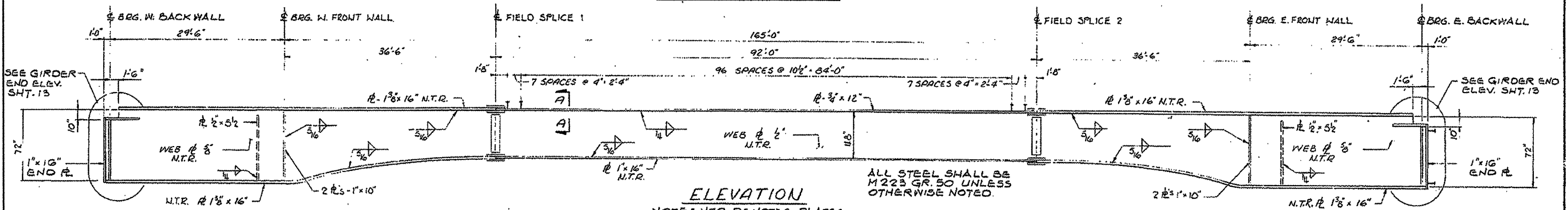
ROUTE NO.	SECTION	COUNTY	TOTAL SHEETS	SHEET NO.
FAP 412	57-2HB-1	McLEAN	178	123

STA.	TO STA.
98+88.00	101+12.00

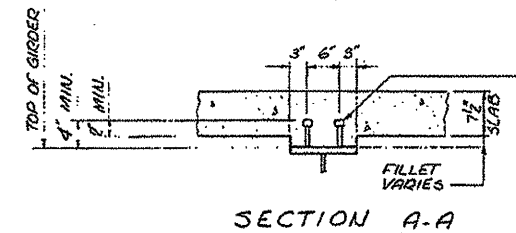
057-0213 EXISTING INFORMATION ONLY



FRAMING PLAN



ELEVATION



SECTION A-A

NOTE: N.T.R. DENOTES PLATES TO WHICH NOTCH TOUGHNESS REQUIREMENTS ARE APPLICABLE.

NOTE: FOR HAUNCH DETAILS SEE SHEET 12.

NOTE: "A" DENOTES PERMANENT SCREEN PANEL. "B" DENOTES ACCESSIBLE SCREEN PANEL. SCREEN PANELS TO BE LOCATED AT FRONT FACE OF CF1 ONLY.

FRAMING PLAN AND GIRDER ELEVATION

TR. 181 OVER FAP ROUTE 412
 F.A.P. ROUTE 412-SEC. 57-2HB-1
 McLEAN COUNTY
 STATION 178+52.88
 STRUCTURE NUMBER 057-0213



FILE NAME =	USER NAME = ceerlockjd	DESIGNED - JAL	REVISED -
ca:\pr.\work\p\dtd\ceerlockjd\0266557\046179-sht-details.dgn		DRAWN -	REVISED -
		CHECKED -	REVISED -
		DATE - 04/26/11	REVISED -

STATE OF ILLINOIS
 DEPARTMENT OF TRANSPORTATION

057-0213 AS-BUILTS
 FOR INFORMATION ONLY

SCALE: SHEET NO. 21 OF 24 SHEETS STA. TO STA.

F.A. RTE.	SECTION	COUNTY	TOTAL SHEETS	SHEET NO.
	**	Various	178	123
			CONTRACT NO. 46179	

•VARIOUS COUNTIES
 •D-5 OVD SIN STR REPL 2012-06

ILLINOIS FED. AID PROJECT