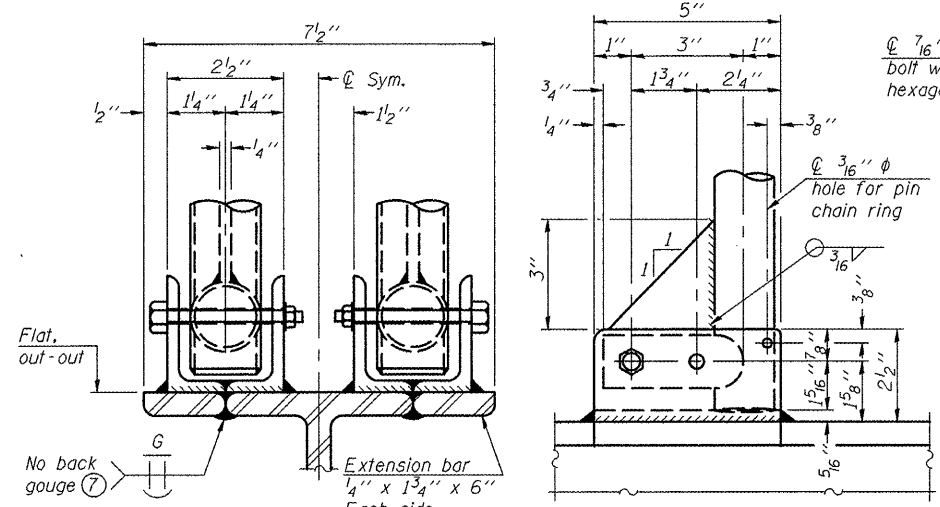
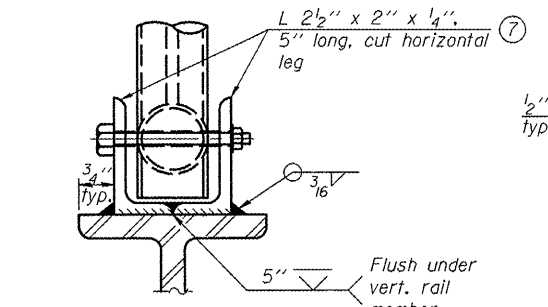


**SECTION F-F  
LIGHTING FIXTURE MOUNTS**  
(If required)

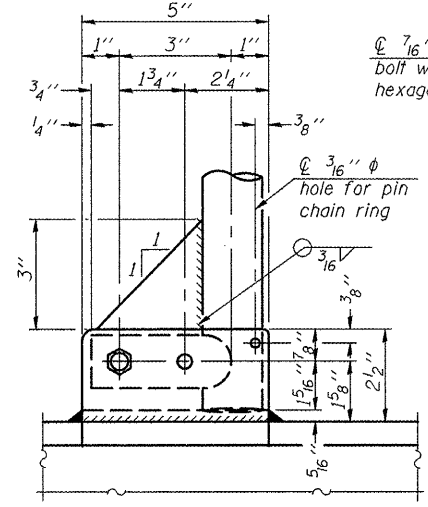
**SIDE ELEVATION DETAIL D HANDRAIL FRONT ELEVATION**



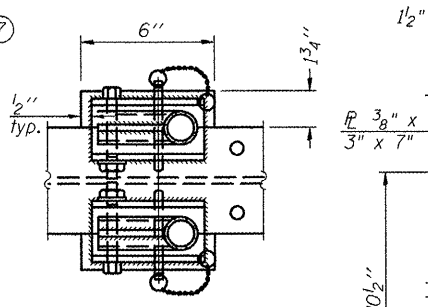
**ELEVATION AT HANDRAIL JOINT**  
(Details not shown same as "FRONT ELEVATION")



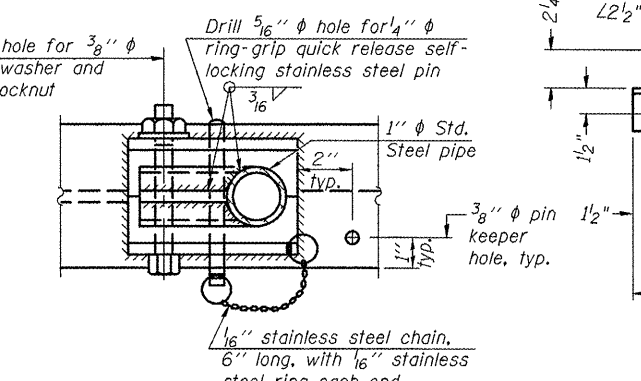
**FRONT ELEVATION**  
(See above Elevations for dimensions.)



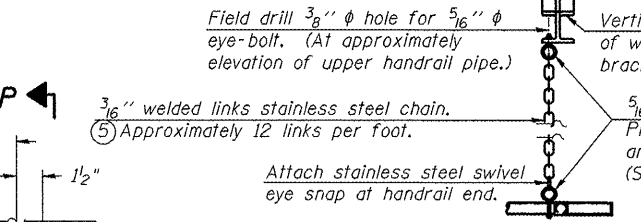
**SIDE ELEVATION**



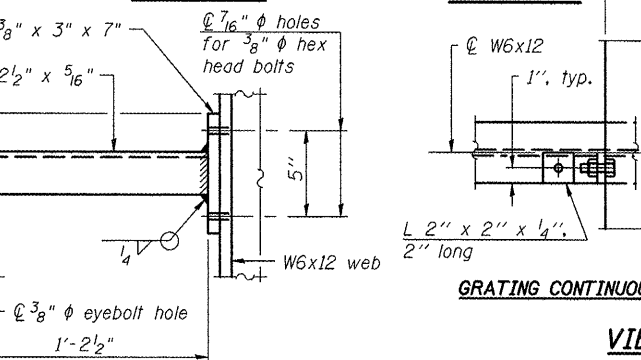
**PLAN AT HANDRAIL JOINT**  
(For Details, see Elevations.)



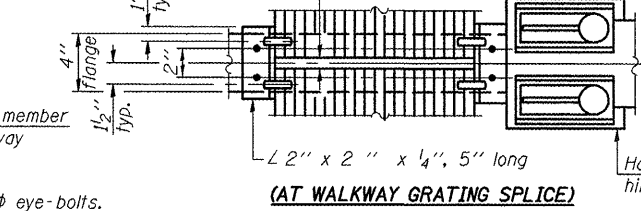
**PLAN AT SINGLE HANDRAIL HINGE  
DETAIL E**



**SAFETY CHAIN ATTACHMENT**  
(With Sign Present)  
Items not shown same as "SIDE ELEVATION" and "SAFETY CHAIN"



**SECTION P-P**



**VIEW W-W**



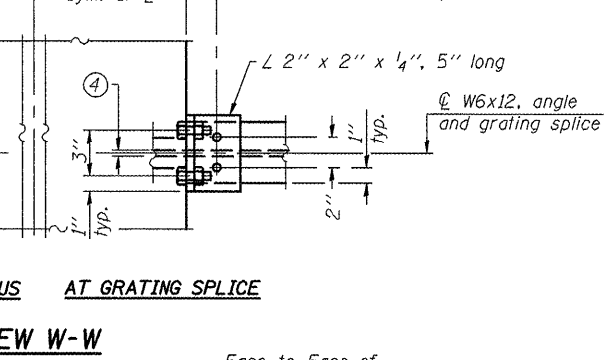
**GRATING CONTINUOUS AT GRATING SPLICE**



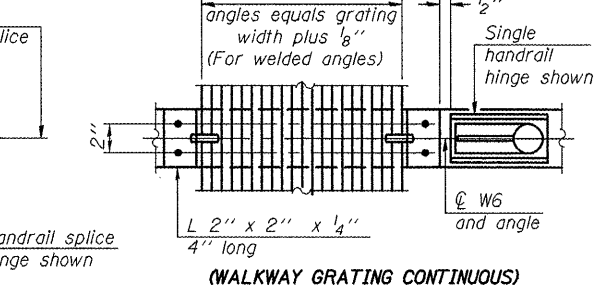
**(AT WALKWAY GRATING SPLICE)**



**(WALKWAY GRATING CONTINUOUS)**

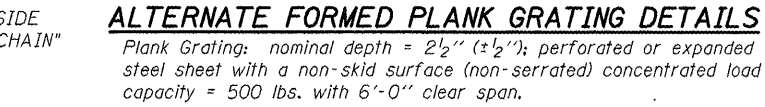


**DETAIL H**  
Welds 3/16" continuous



**DETAIL F**

**DETAIL G**



**ALTERNATE FORMED PLANK GRATING DETAILS**  
Plank Grating: nominal depth = 2 1/2" (± 1/2"); perforated or expanded steel sheet with a non-skid surface (non-serrated) concentrated load capacity = 500 lbs. with 6'-0" clear span.

- NOTES**
- Drilling holes in grating may be done in shop or field, based on Contractor's preference and subject to accurate alignment. Field drilled holes must be touched up with galvanized paint.
  - Horizontal rail member shall be continuous thru 1 1/4 inch pipe. Provide 7/16 inch hole in 1 1/4 inch pipe for 3/8 inch bolt. Field drill 7/16 inch hole in horizontal rail member. Provide washer and locknut for bolt. (Use 5/16 inch eyebolts in 7/16 inch holes on top rail at ends only.)
  - Install standard force-fit end caps or weld 1/2 inch end plates with 1/2 inch c.f.w. and grind smooth. (All rail ends.)
  - 3/8 inch (± 1/4 inch) gap between grating panels at splice.
  - Chain to be type 304L stainless steel suitable for prolonged exterior exposure. Approximately 3'-6" long chain per location. Maximum sag with handrail erected = 4".
  - 1/2 inch x 1/2 inch x 2 inch welded to handrail posts to protect locations that contact grating.
  - Extrusions may be used in lieu of details shown, with approval by Engineer.
  - Field cut ends of light support channels shall be free of burrs or hazardous projections and coated with zinc-rich primer or equivalent.

**BM-4 1-20-11**

FILE NAME =	USER NAME = cealockjd
ci:\pr\work\p\id\cealockjd\026557\046179-sht-detail.dgn	
PLOT SCALE = 48.0000' / 1"	
PLOT DATE = 10/7/2011	

DESIGNED - JAL	REVISED -
DRAWN -	REVISED -
CHECKED -	REVISED -
DATE - 04/26/11	REVISED -

**STATE OF ILLINOIS  
DEPARTMENT OF TRANSPORTATION**

**BRIDGE MOUNT SIGN STRUCTURES  
WALKWAY DETAILS**

SCALE: SHEET NO. 19 OF 24 SHEETS STA. TO STA.

F.A. R.T.E.	SECTION	COUNTY	TOTAL SHEETS	SHEET NO.
			178	127
			CONTRACT NO. 46179	
ILLINOIS FED. AID PROJECT				