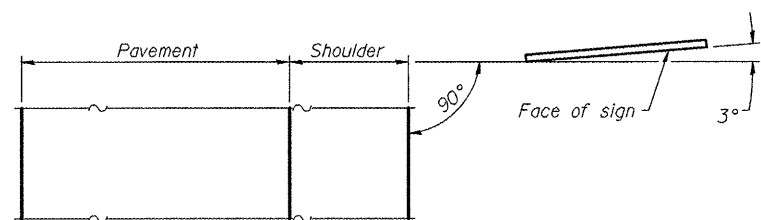
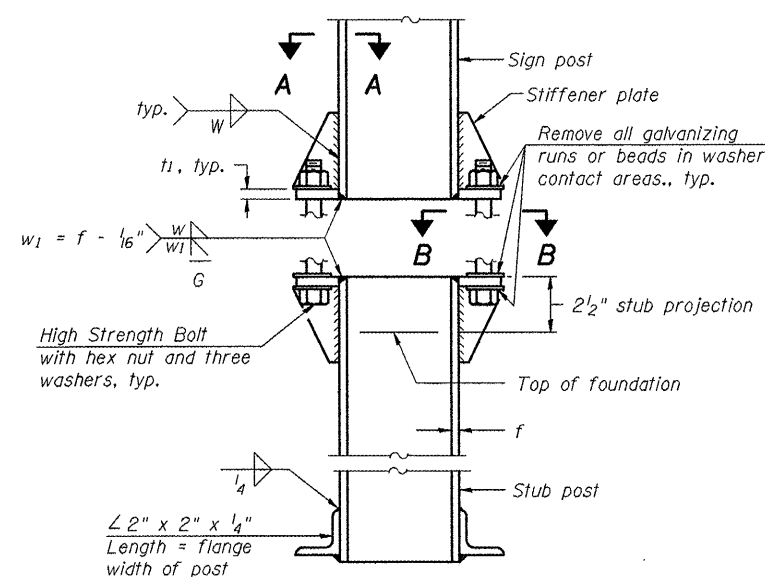


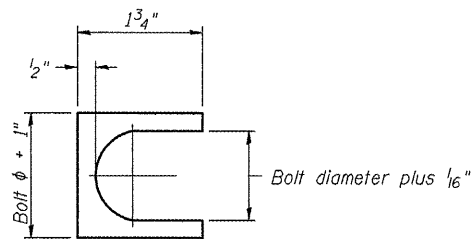
ELEVATION



LOCATION SKETCH

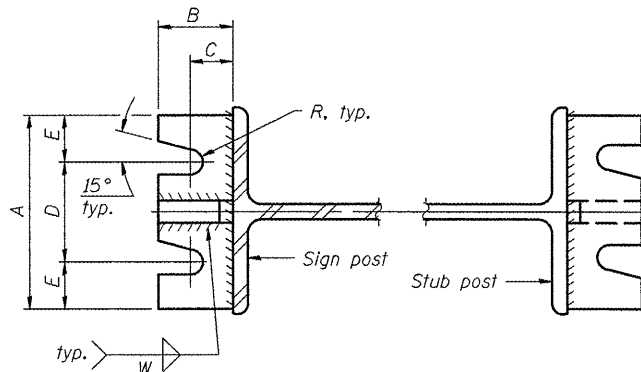


**ELEVATION
SIGN POST & STUB POST**



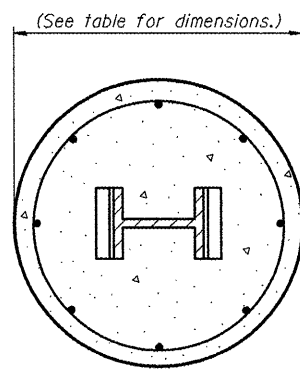
SHIM DETAIL

Furnish two 0.01" thick and two 0.03" thick stainless steel or brass (ASTM B36) shims per post.

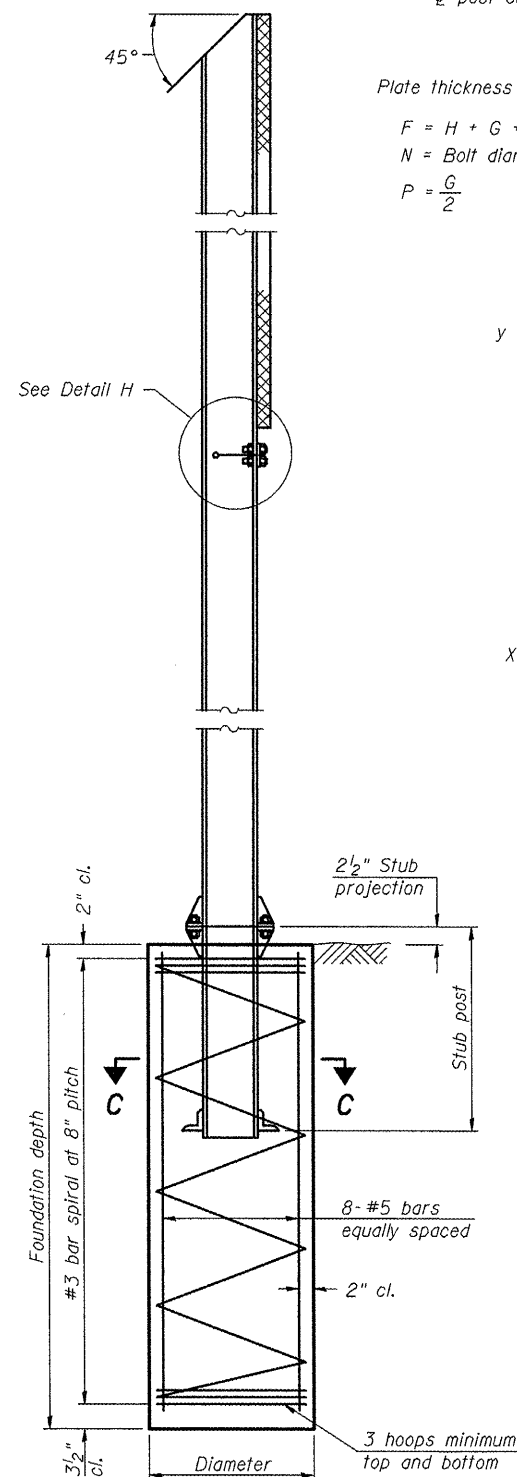


SECTION A-A

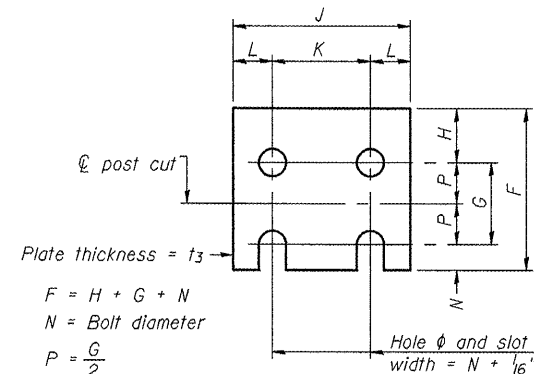
SECTION B-B



SECTION C-C



SECTION D-D



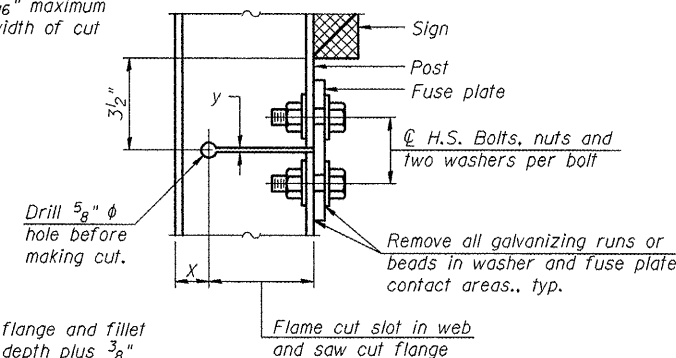
FUSE PLATE DETAIL

(Install with notches down.)

Plate thickness = t_3
 $F = H + G + N$
 $N = \text{Bolt diameter}$
 $P = \frac{G}{2}$

FUSE PLATE DATA		
N = Bolt Diameter	G	H
1/2"	2"	1 1/8"
5/8"	2 1/4"	1 1/4"
3/4"	2 1/2"	1 3/8"
7/8"	2 3/4"	1 1/2"
1"	3"	1 5/8"
1 1/8"	3 1/4"	1 3/4"
1 1/4"	3 1/2"	1 7/8"

$y = 3/16"$ maximum width of cut



DETAIL H

Remove all galvanizing runs or beads in washer and fuse plate contact areas, typ.

STIFFENER PLATE DETAIL

Diameter

GENERAL NOTES

Posts shall be plumbed by using shims with post-to-stub post connection bolts snug tight only. Final tightening of all High Strength Bolts shall be in accordance with Article 727.05 and threads at the junction of the bolt and nut shall be burred or center punched to prevent the nut from loosening.

LOADING: 80 m.p.h. wind with 30% gust factor, normal to sign.

DESIGN STRESSES:
 Structural steel - 20,000 p.s.i.
 Reinforcing steel - 20,000 p.s.i.
 Concrete - 1,400 p.s.i.
 Footing soil pressure - 2,000 p.s.f.

After fabrication, the post, fuse plate and upper 6", min. of the stub post shall be hot-dip galvanized in accordance with AASHTO M111. All bolts, nuts and washers shall be hot-dip galvanized in accordance with AASHTO M232.

Work this sheet with Base Sheet BAW-A-2.

•VARIOUS COUNTIES
 •D-5 OVD SIN STR REPL 2012-06

BAW-A-1

1-20-11

(Sheet 1 of 2)

FILE NAME =	USER NAME = cearlack_jd	DESIGNED - JAL	REVISED -
ca:\pwork\pwidat\cearlack_jd\0266557\046179-sht-details.dgn		DRAWN -	REVISED -
		CHECKED -	REVISED -
		DATE - 04/26/11	REVISED -

STATE OF ILLINOIS
 DEPARTMENT OF TRANSPORTATION

BREAK-AWAY WIDE FLANGE
 STEEL SIGN POST DETAILS

F.A. RTE.	SECTION	COUNTY	TOTAL SHEETS	SHEET NO.
	**	Various	178	129
			CONTRACT NO. 46179	
ILLINOIS FED. AID PROJECT				

SCALE: SHEET NO. 23 OF 24 SHEETS STA. TO STA.