

EXISTING INFORMATION ONLY

STATE OF ILLINOIS
DEPARTMENT OF TRANSPORTATION

* FAP 412, FAI-55, FAP 46 (I.S. RYE, 51)
* 57-4 (HRR-4, YBR, 13), 62R, L, SC & TS

PROJECT NO.	SECTION	COUNTY	TOTAL SHEETS	SHEET NO.
***	***	MCLEAN	319	123

GENERAL NOTES

SPECIFICATIONS:

DESIGN: AASHTO Standard Specifications for Structural Supports for Highway Signs, Luminaires and Traffic Signals... dated January, 1975

CONSTRUCTION: Standard Specifications for Road and Bridge Construction, State of Illinois, (dated October 1, 1983); Supplemental Specifications for Road and Bridge Construction; Standard Specifications for Traffic Control Items (dated Feb 1, 1997) and Special Provisions.

MINIMUM CLEARANCE: Vertical Roadway Clearance = 17'-3" (All Obstructions)

LOADING--80 MPH WIND VELOCITY PLUS 30% GUST FACTOR
WIND LOADING: 35 psf normal to Sign Panel Area as shown below in Wind Loading Diagram plus 48 psf normal to exposed frame members.

WALKWAY LOADING: Dead Load plus 500# concentrated Live Load

MATERIALS:

REINFORCEMENT BARS shall conform to the requirements of AASHTO M31 or M53, Grade 60.

CLASS X CONCRETE shall be used throughout.
STRUCTURAL STEEL: All material for structural chords, verticals, or chord splices shall conform to either ASTM A500, Grade C, AASHTO M222 or AASHTO M223, Grade 50 and shall meet the longitudinal CVN requirements of 15 ft lbs. at 40° F.

Posts shall conform to AASHTO M222 or M223, Grade 50, and shall meet the longitudinal CVN requirements of 15 ft lbs. at 40° F.

HIGH STRENGTH BOLTS shall conform to the requirements of AASHTO M164.

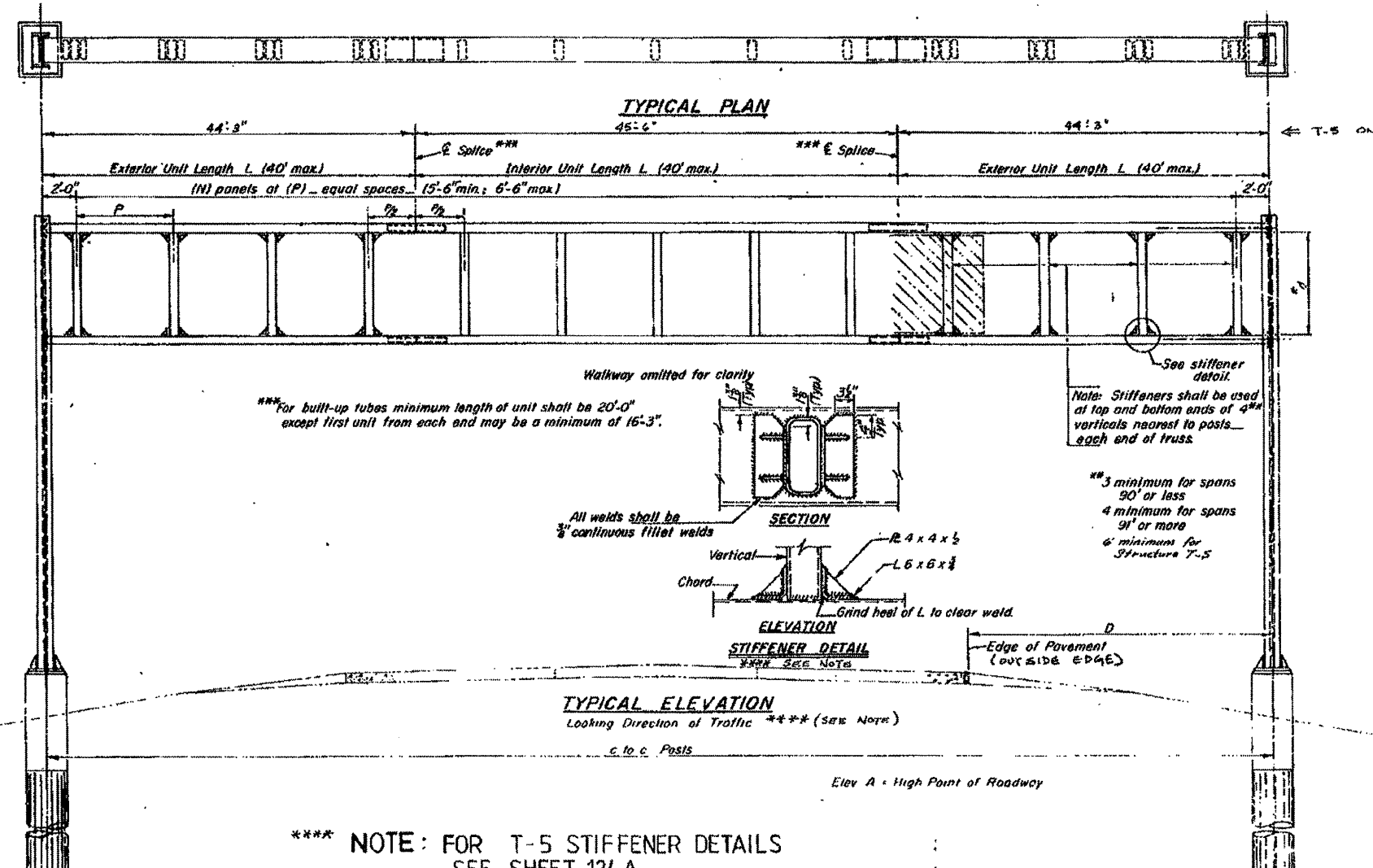
STRUCTURAL SHAPES and PLATES shall conform to the requirements of AASHTO M223, Grade 50, or M222, unless otherwise specified.

PAINTING: The zinc-silicates and vinyl paint system shall be used for shop and field painting of all structural steel. Exterior surfaces of all structural steel that are painted with the high-build vinyl paint shall receive one coat of vinyl enamel. Paint system, including first coat, for the walkway gratings may be done in the shop or just prior to erection. Chords and verticals will require painting on exterior surfaces only.

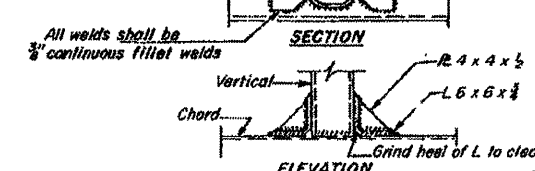
WELDING: All welding shall be in accordance with Article 507.04(s) of the Standard Specifications for Road and Bridge Construction.

TOTAL BILL OF MATERIAL

OVERHEAD SIGN STRUCTURE_SPAN (SPECIAL)	Lin Ft	629
OVERHEAD SIGN STRUCTURE WALKWAY_TYPE S	Lin Ft	415
DRILLED SHAFT CONCRETE FOUNDATIONS	Cu Yds	115.0



*** For built-up tubes minimum length of unit shall be 20'-0" except first unit from each end may be a minimum of 16'-3".



Note: Stiffeners shall be used at top and bottom ends of 4" verticals nearest to posts each end of truss.
#3 minimum for spans 90' or less
#4 minimum for spans 91' or more
#6 minimum for Structure T-5

**** NOTE: FOR T-5 STIFFENER DETAILS SEE SHEET 124 A

Structure No	Station	c to c Posts	Elev A	Dim. D
T1	155+20.0 (FAI-55)	98'-0"	840.03	42'-0"
T2	151+60.0 (FAI-55)	98'-0"	859.29	42'-0"
T3	168+00.0 (FAI-55)	74'-0"	874.31	18'-0"
T4	184+00.0 (FAI-55)	61'-6"	874.58	14'-1"
T5	200+00.0 (FAI-55)	134'-0"	870.24	12'-0"
T6	210+00.0 (FAI-55)	97'-4"	862.90	16'-9"
T7	37+00.0 (U55)	66'-4"	841.73	22'-0"

NOTE 'A'
DESIGN SPAN LENGTHS MAY BE MODIFIED AS REQUIRED TO PROVIDE ACTUAL WIND LOADINGS AS PER STANDARD SPECIFICATIONS.

OVERHEAD SIGN STRUCTURES GENERAL PLAN & ELEVATION

F.A.I.-55 AND U.S. RT.51
F.A.P.412
McLEAN COUNTY

DESIGNED	EXAMINED	1P
CHECKED	PASSED	DESIGNER'S SIGNATURE
DRAWN	APPROVED	ENGINEER'S SIGNATURE AND STAMP
CHECKED		

5 S - S - 1 SPECIAL