

EXISTING INFORMATION ONLY

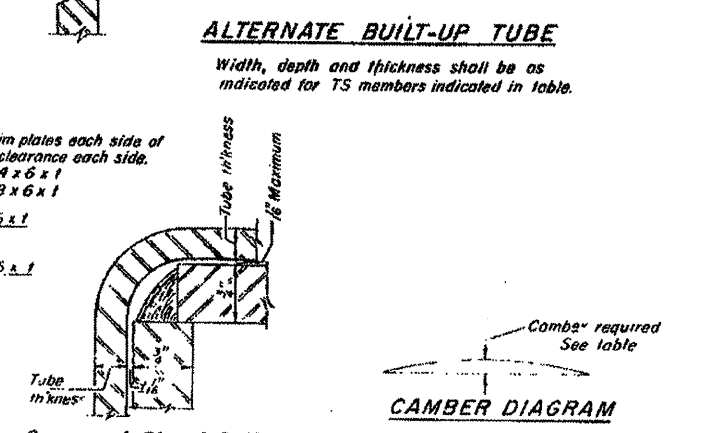
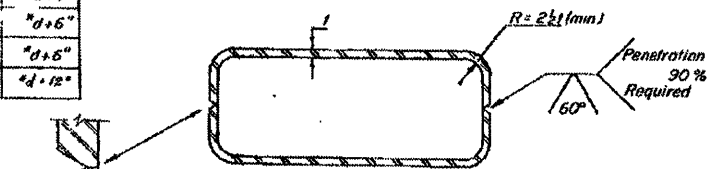
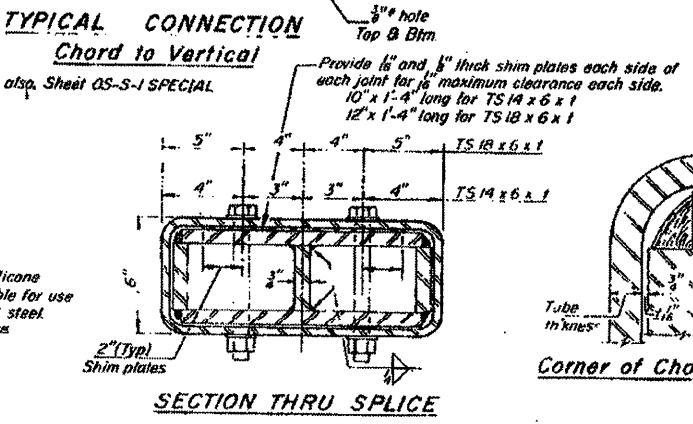
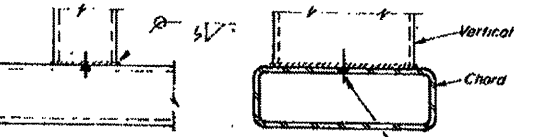
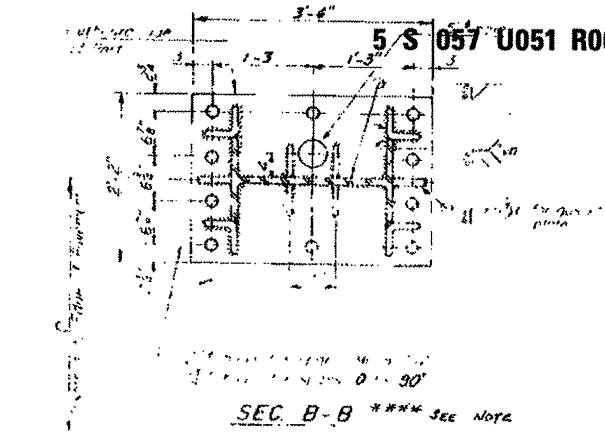
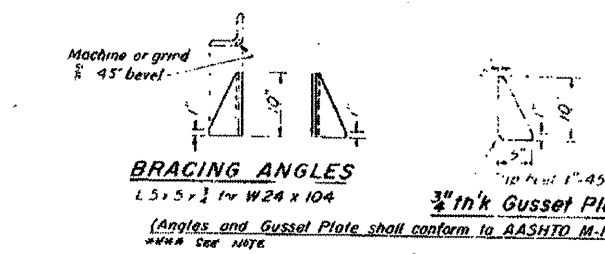
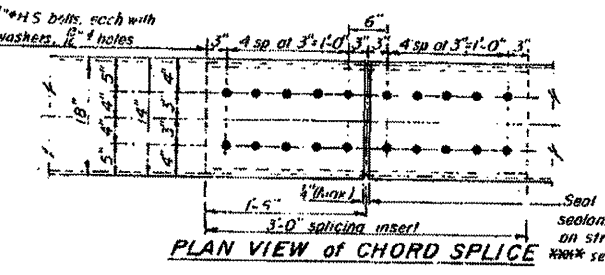
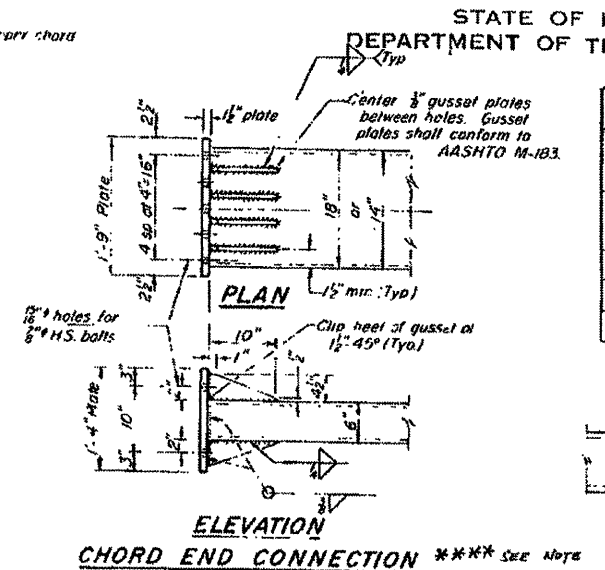
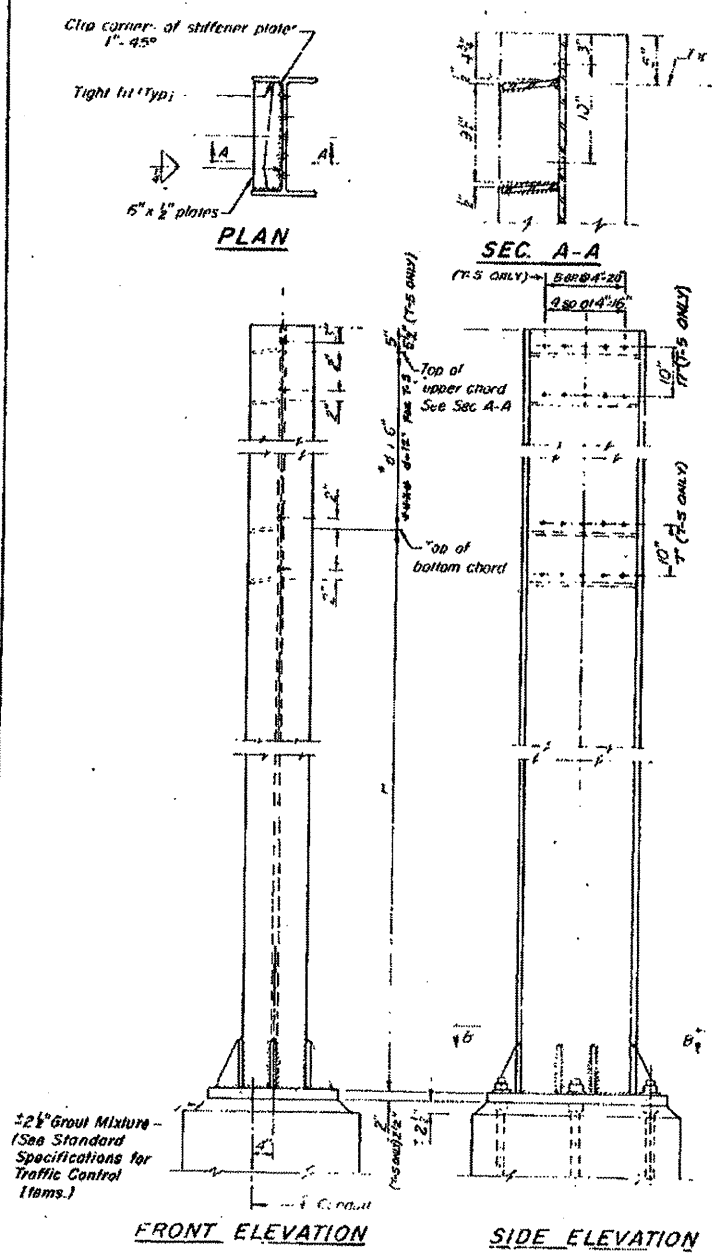
STATE OF ILLINOIS
DEPARTMENT OF TRANSPORTATION

PROJECT NO.	319	124
DATE		
BY		
CHECKED		
APPROVED		

* FAP 412, F.A.I.-55, FAP 46 (I.L.S. D.T.E. 31)
** 37-4 (HBR-4, YBR, 1R3, G2R, L, SG & TS)

Span	Camber of Centerline	Chord	Vertical	Post	C-C (h rds)
0' to 70'	4"	TS14x6x $\frac{3}{8}$	TS10x6x $\frac{3}{8}$	W24x104	"d+6"
71' to 80'	4"	TS14x6x $\frac{3}{8}$	TS10x6x $\frac{3}{8}$	W24x104	"d+6"
81' to 90'	6"	TS18x6x $\frac{3}{8}$	TS14x6x $\frac{3}{8}$	W24x104	"d+6"
91' to 100'	6"	TS18x6x $\frac{3}{8}$	TS14x6x $\frac{3}{8}$	W24x104	"d+6"
101' to 110'	6"	TS18x6x $\frac{3}{8}$	TS14x6x $\frac{3}{8}$	W24x104	"d+6"
111' to 124'	6"	TS18x6x $\frac{3}{8}$	TS14x6x $\frac{3}{8}$	W24x104	"d+6"
124'	6"	TS20x12x $\frac{3}{8}$	TS14x6x $\frac{3}{8}$	W27x178	"d+12"

* d is sign depth + 2"



Structure No	Span	Chamber of E	Exterior Unit Lgth (L)	Interior Unit Lgth (L)	No. of Panels (N)	Panel Lgth (P)	Chord Size	Vertical Size	Post Size	L.H. Post Dim. H	R.H. Post Dim. H		
T1	155+20.0 (R.A.155)	98'0"	14'5"	6"	34'5 1/2"	29'4 1/2"	10	5'10 1/2"	TS18x6x $\frac{3}{8}$	TS14x6x $\frac{3}{8}$	W24x104	20'0"	20'0"
T2	151+60.0 (R.A.156)	98'0"	14'5"	6"	34'5 1/2"	29'4 1/2"	10	5'10 1/2"	TS18x6x $\frac{3}{8}$	TS14x6x $\frac{3}{8}$	W24x104	20'0"	20'0"
T3	108+00.0 (R.A.158)	74'0"	12'5"	4"	22'5"	29'2"	12	5'10"	TS18x6x $\frac{3}{8}$	TS14x6x $\frac{3}{8}$	W24x104	19'0"	19'0"
T4	184+00.0 (R.A.190)	61'0"	13'0"	6"	16'4 1/2"	28'9"	10	5'9"	TS18x6x $\frac{3}{8}$	TS14x6x $\frac{3}{8}$	W24x104	16'4 1/2"	18'10"
T5	205+00.0 (R.A.195)	134'0"	14'0"	6"	44'3"	45'6"	20	6'6"	TS20x12x $\frac{3}{8}$	TS16x6x $\frac{3}{8}$	W27x178	20'5 1/2"	18'4 1/2"
T6	210+00.0 (R.A.196)	97'4"	13'0"	6"	34'11"	29'2"	10	5'10"	TS18x6x $\frac{3}{8}$	TS14x6x $\frac{3}{8}$	W24x104	18'10"	18'10"
T7	27+00.0 (R.A.51)	66'4"	8'5"	4"	21'10"	22'8"	11	5'8"	TS14x6x $\frac{3}{8}$	TS10x6x $\frac{3}{8}$	W24x104	16'0"	19'0"

*** NOTE: SEE SHEET # 124A FOR STRUCTURE # 1-5 DETAILS!

OVERHEAD SIGN STRUCTURES
POST and CHORD DETAILS
F.A.I.-55 AND U.S. RT.51
F.A.P.412
McLEAN COUNTY

DESIGNED	JAL	19
CHECKED		
APPROVED		

CS-5-2 SPECIAL

*VARIOUS COUNTIES
**D-5 OVD SIN STR REPL 2012-06

SCALE: SHEET NO. OF SHEETS STA. TO STA.

ILLINOIS FED. AID PROJECT