

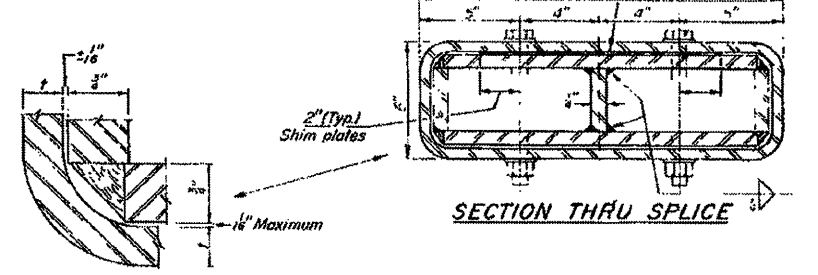
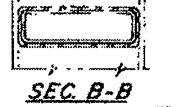
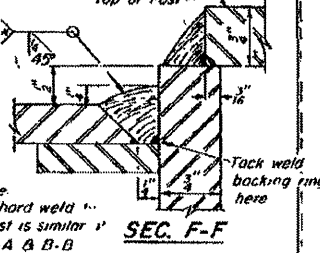
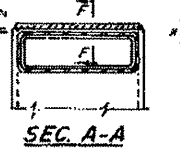
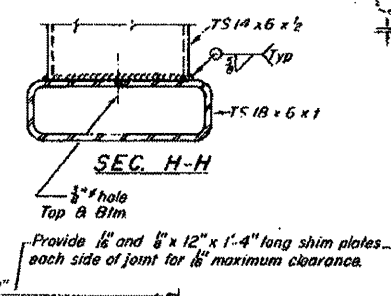
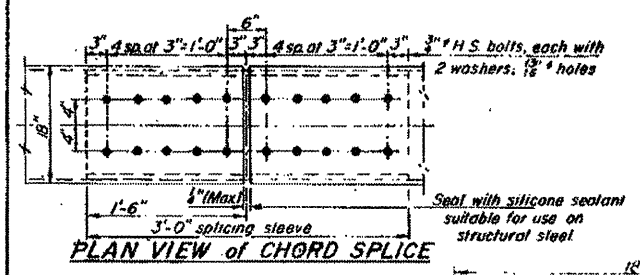
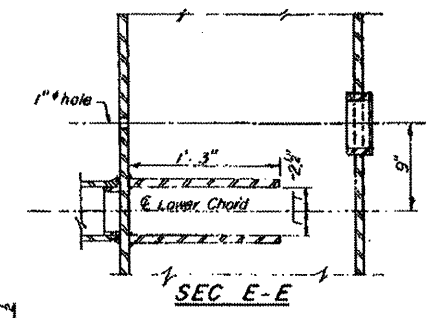
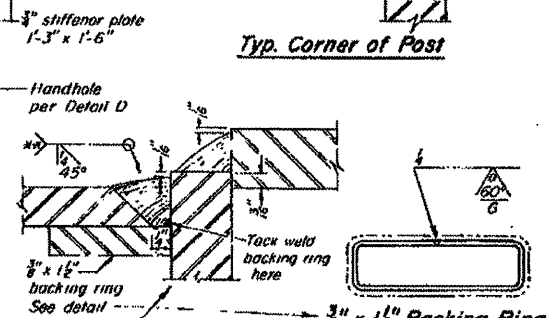
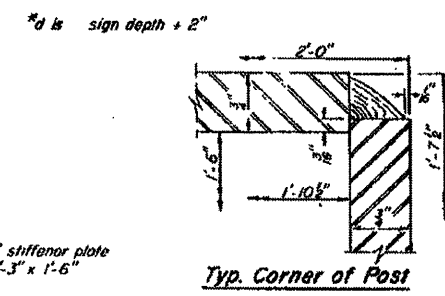
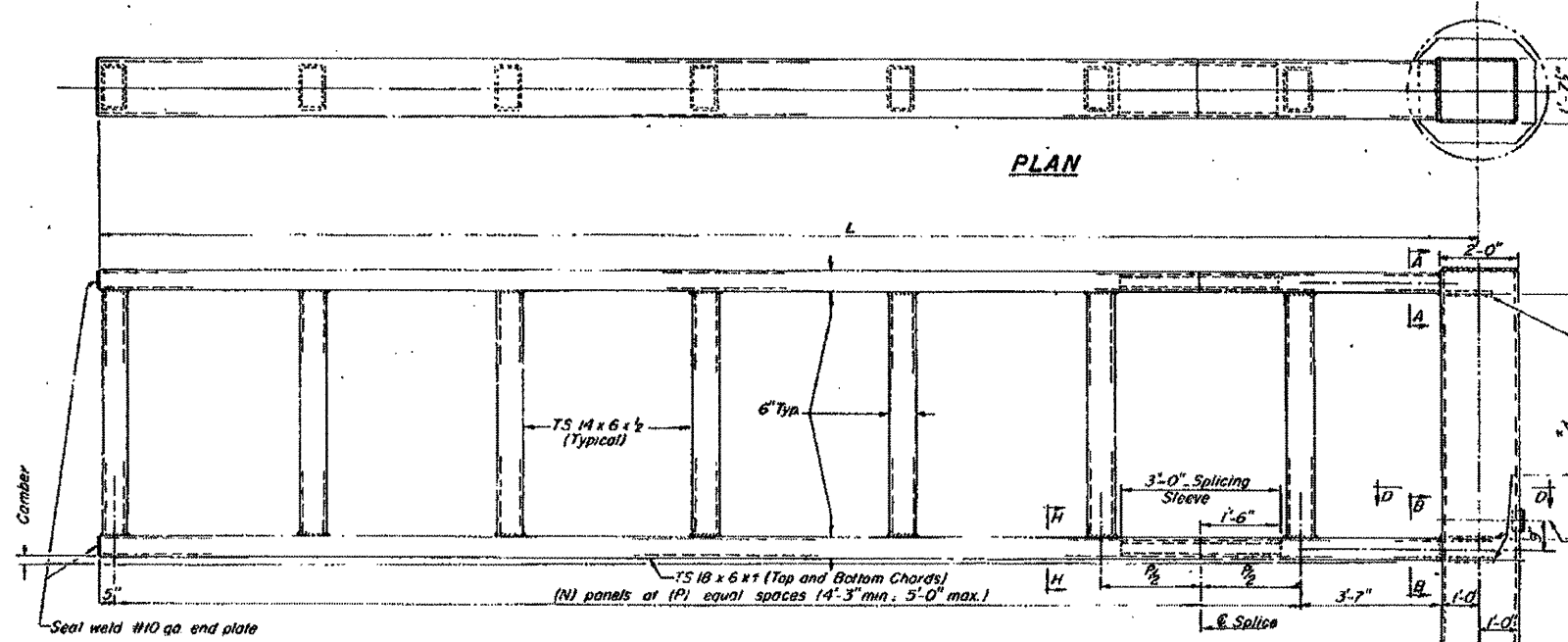
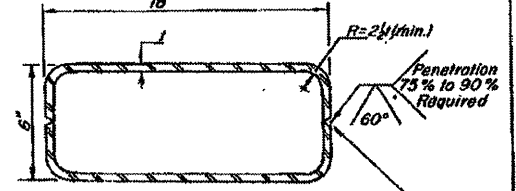
EXISTING INFORMATION ONLY

STATE OF ILLINOIS
DEPARTMENT OF TRANSPORTATION

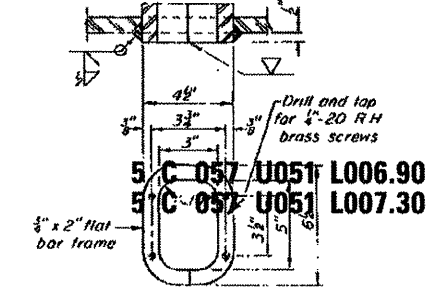
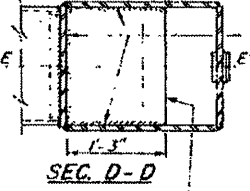
DATE	BY	COUNTY	SHEET NO.	SHEET TOTAL
*	*	McLEAN	919	129

* FAP 412, FAI-55, FAP 46 (U.S. RTE. 51)
* * 57.0 (N&R-4, VBR, 1W, 62R, L, SG & TS)

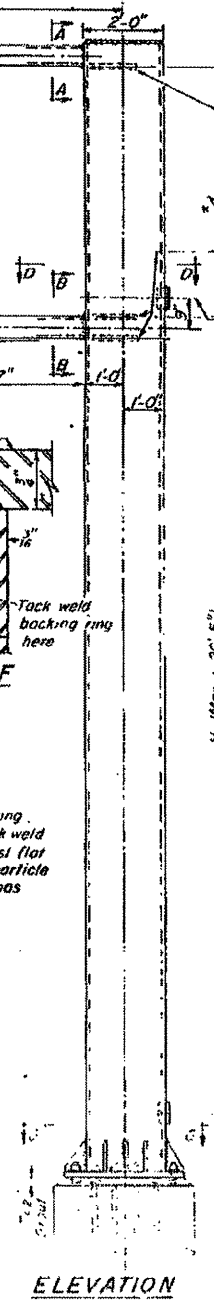
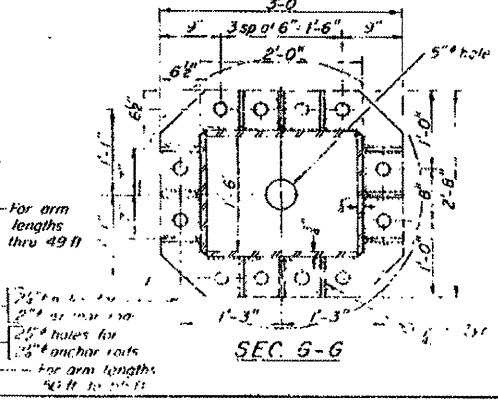
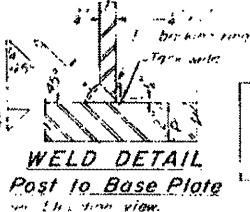
L	Comber	Chord	Vertical	C-C Chords
0' to 35'	3 1/2"	TS 18 x 6 x 1/2	TS 14 x 6 x 1/2	"d + 6"
36' to 40'	4"	TS 18 x 6 x 1/2	TS 14 x 6 x 1/2	"d + 6"
41' to 45'	5 1/2"	TS 18 x 6 x 1/2	TS 14 x 6 x 1/2	"d + 6"
46' to 50'	9"	TS 18 x 6 x 1/2	TS 14 x 6 x 1/2	"d + 6"
51' to 55'	10 1/2"	TS 18 x 6 x 1/2	TS 14 x 6 x 1/2	"d + 6"



* Place tack weld for backing ring inside groove joint. Clean tack weld before welding. Ultrasonic test flat surfaces and use magnetic particle or dye penetrant tests in areas having radii.



Structure No	Station	Dim H
C1	198+00.0 (N.A. 1-50)	17'11 1/2"
C2	48+00.0 (U.S. 51)	16'1 1/2"
C3	87+00.0 (U.S. 51)	17'1 1/2"



OVERHEAD SIGN STRUCTURES - CANTILEVER FRAME and POST DETAILS

FAI-55 AND U.S. RT. 51
F.A.P. 412
McLEAN COUNTY

DESIGNED	EXAMINED	10
CHECKED	PASSED	INCHES OF BRIDGE DISTRICT
DRAWN	APPROVED	INCHES OF BRIDGE DISTRICT
CHECKED		

OSC-S-2- SPECIAL

*VARIOUS COUNTIES
**D-5 OVD SIN STR REPL 2012-06

FILE NAME =	USER NAME = ceerlock_jd	DESIGNED - JAL	REVISED -
ce:\pw\work\pws\d01\ceerlock_jd\02260557\046179-shr-detais.dgn		DRAWN -	REVISED -
PLOT SCALE = 40.0000 / 1"		CHECKED -	REVISED -
PLOT DATE = 9/21/2011		DATE - 04/26/11	REVISED -

STATE OF ILLINOIS
DEPARTMENT OF TRANSPORTATION

SCALE:	SHEET NO. OF SHEETS	STA. TO STA.

F.A. RTE.	SECTION	COUNTY	TOTAL SHEETS	SHEET NO.
*	**	Various	178	160

CONTRACT NO. 46179
ILLINOIS FED. AID PROJECT