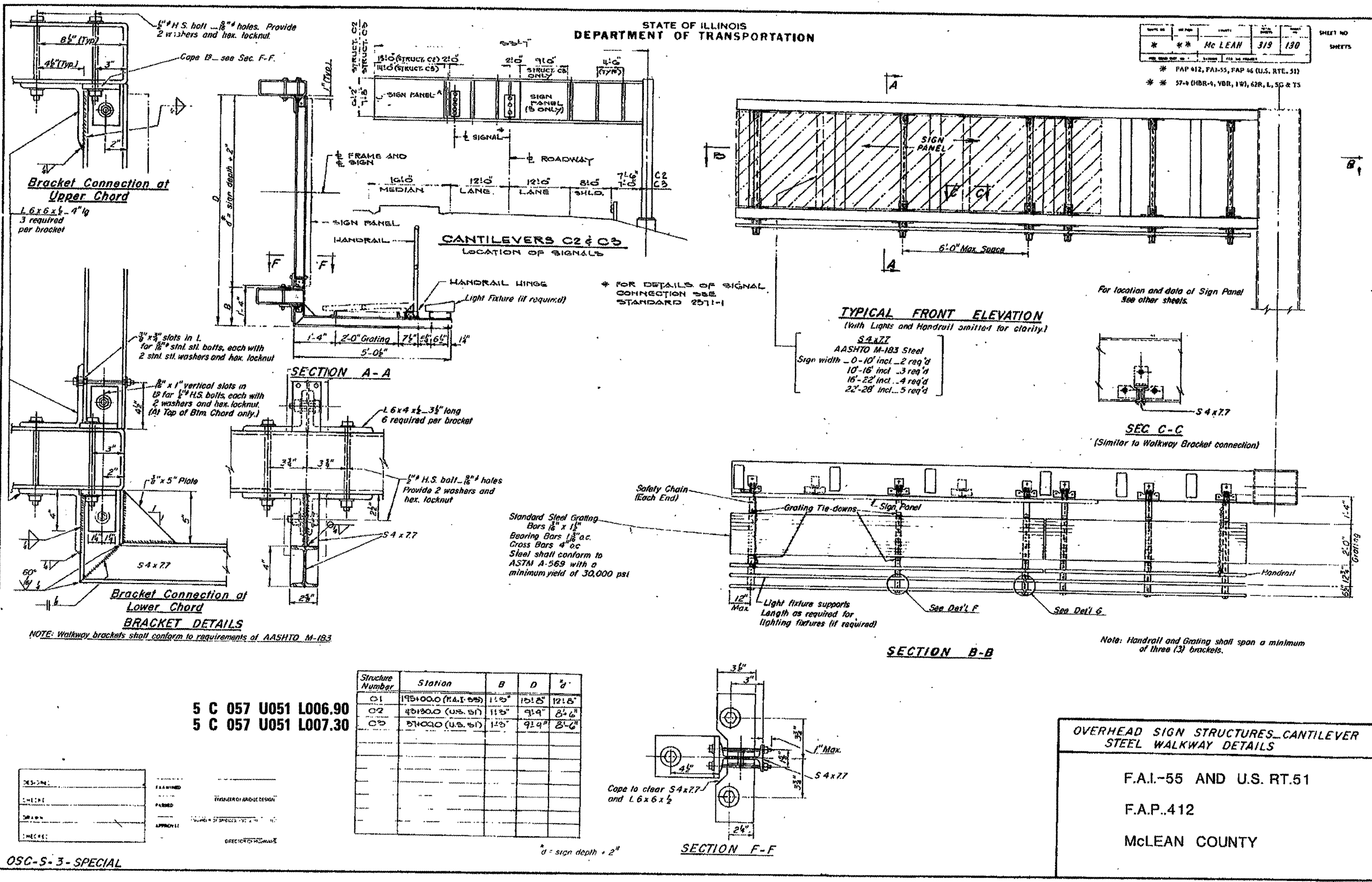


EXISTING INFORMATION ONLY

STATE OF ILLINOIS
DEPARTMENT OF TRANSPORTATION

PROJECT NO.	319	130
CONTRACT NO.	McLEAN	
SECTION	FAP 412, FAP 55, FAP 46 (U.S. RTE. 51)	
DATE	57-4 (HBR-4, YBR, 1W), 62R, L, 5G & TS	

SHEET NO.
SHEETS



Structure Number	Station	B	D	d
C1	195+00.0 (F.A.I. 55)	11'0"	10'8"	12'8"
C2	43+90.0 (U.S. 51)	11'0"	9'9"	8'6"
C3	57+00.0 (U.S. 51)	12'0"	9'9"	8'6"

DESIGNED:	JAL
CHECKED:	
DATE:	04/26/11

OSC-S-3-SPECIAL

5 C 057 U051 L006.90
5 C 057 U051 L007.30

FILE NAME =	USER NAME = ceer-lockjd	DESIGNED - JAL	REVISED -
PROJECT WORK \pvt\dot\ceer-lockjd\0286557-D	46179-shr-detaile.dgn	DRAWN -	REVISED -
PLOT SCALE = 48.0000 / 1 in.		CHECKED -	REVISED -
PLOT DATE = 9/21/2011		DATE - 04/26/11	REVISED -

STATE OF ILLINOIS
DEPARTMENT OF TRANSPORTATION

AS-BUILTS
FOR INFORMATION ONLY
SCALE: SHEET NO. OF SHEETS STA. TO STA.

F.A. RTE.	SECTION	COUNTY	TOTAL SHEETS	SHEET NO.
*	**	Various	178	161
			CONTRACT NO. 46179	
ILLINOIS FED. AID PROJECT				

VARIOUS COUNTIES
D-5 OVD SIN STR REPL 2012-06