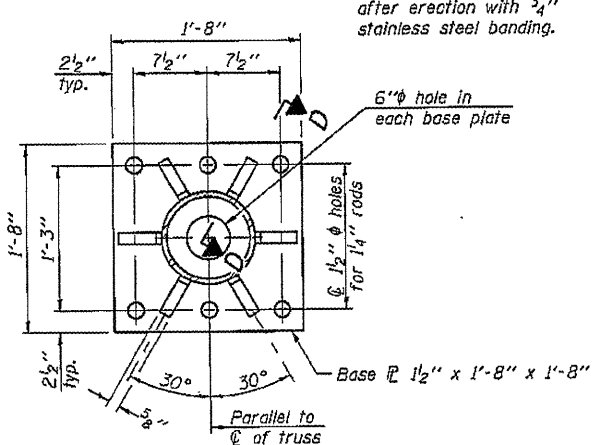
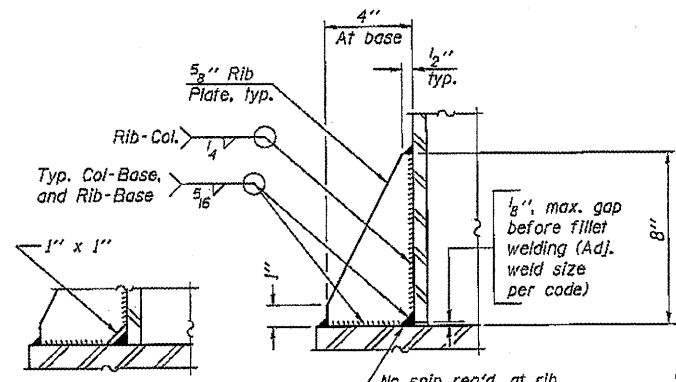


DETAIL B
Ribs shall be cut to fit slope of pipe.

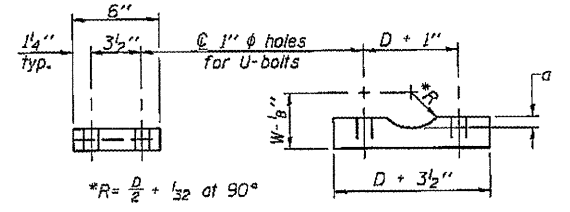


SECTION B-B



SECTION D-D

** Alternate detail if welding col. to base plate first, then snip inside corner of ribs. Terminate weld on rib 1/4" from snip.

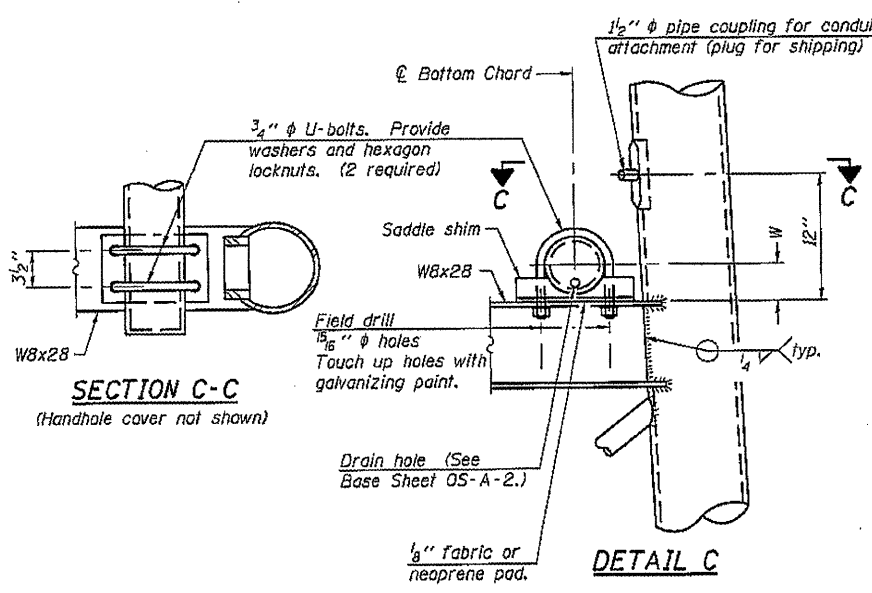


SADDLE SHIM DETAIL

ASTM B26 Alloy 356-F
or
ASTM B209 Alloy 6061-T651
(4 required per sign truss)

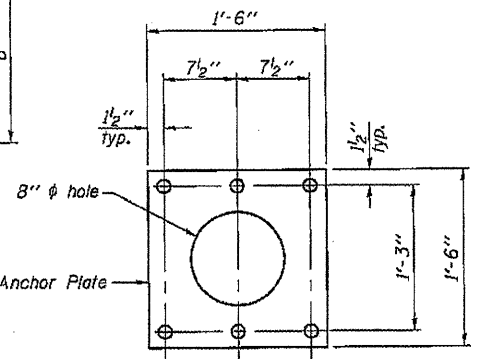
Truss Chord Nominal Dia.	a
5"	3/4"
5 1/2"	13/16"
6"	7/8"
6 1/2"	15/16"
7"	1"

D = Outside Diameter of Chord.
For W, see Base Sheet OS-A-6.

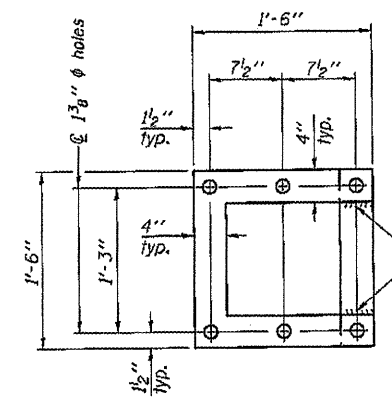


SECTION C-C
(Handhole cover not shown)

DETAIL C



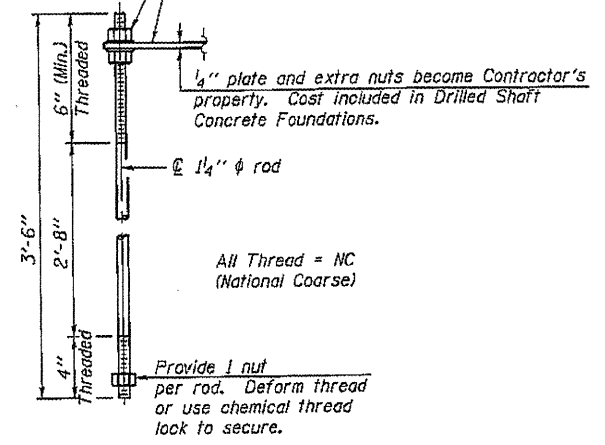
ANCHOR ROD DETAIL
Spread Footing Foundation



POSITIONING PLATE(S)

Optionally may use four (4) separate bars. Weld to maintain perpendicularity.

At each location, provide 1/4" thick positioning plate(s) and six (6) additional nuts to be used with leveling nuts to maintain anchor bolts position during concrete placement.



ANCHOR ROD DETAIL
Drilled Shaft Foundation

Anchor rods shall conform to ASTM F1554 Grade 105. Galvanize upper 12" minimum per AASHTO M232. No welding shall be permitted on rods.

10" ϕ PIPE SUPPORT FRAME DETAILS

OS-A-6A 1-20-11

FILE NAME =	USER NAME = kelleyj	DESIGNED -	REVISED -
Si\Sign Truss Plan Details\46196\46196S1g	Repl.dgn	DRAWN -	REVISED -
PLOT SCALE = 0.1805 ft / in.	CHECKED -	REVISED -	REVISED -
PLOT DATE = Sep-30-2011 10:27:33AM	DATE -	REVISED -	REVISED -

STATE OF ILLINOIS
DEPARTMENT OF TRANSPORTATION

OVERHEAD SIGN STRUCTURES	
SUPPORT FRAME DETAILS - ALUMINUM TRUSS	
SCALE:	SHEET NO. OF SHEETS STA. TO STA.

F.A. RTE.	SECTION	COUNTY	TOTAL SHEETS	SHEET NO.
0-6	OVDSINSTRBEEL12-23	SANGAMON	33	12
				CONTRACT NO. 46196
ILLINOIS FED. AID PROJECT				