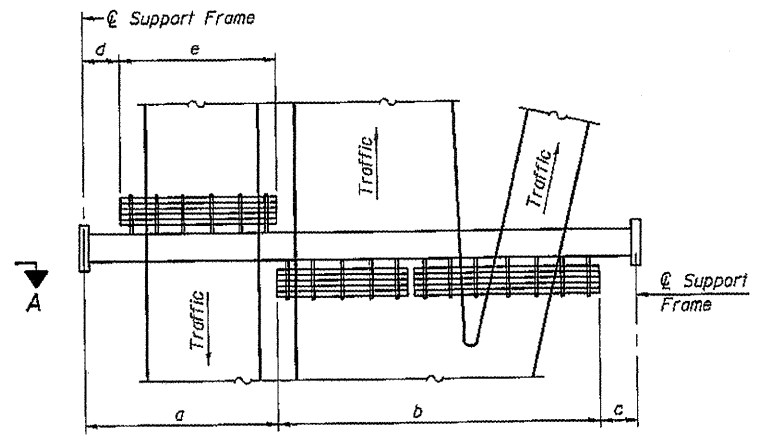


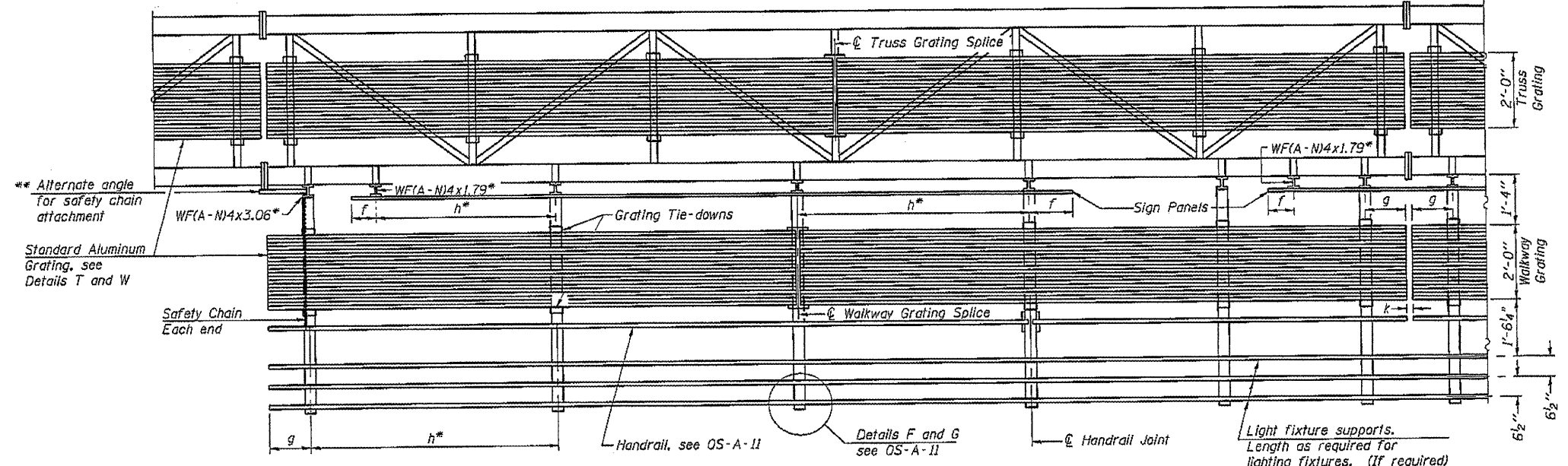
TYPICAL FRONT ELEVATION
 With lights and handrail omitted for clarity.
 For Section B-B, see Base Sheet OS-A-10.



PLAN WALKWAY AND HANDRAIL SKETCH
 (Road plan beneath truss varies)

BRACKET TABLE

WF(A-N)4x1.79 or WF(A-N)4x3.06 ASTM B308, Alloy 6061-T6		
Sign Width		Number Brackets Required
Greater Than	Less Than or Equal To	
	8'-0"	2
	14'-0"	3
	20'-0"	4
	26'-0"	5
	32'-0"	6



SECTION A-A

Handrail and walkway shall span a minimum of three brackets between splices and/or gap joints. Place all sign and walkway brackets as close to panel points as practical. Handrail joints, grating, and light support splices placed as needed.

Notes:
 * Space walkway brackets WF(A-N)4x3.06 and sign brackets WF(A-N)4x1.79 for efficiency and within limits shown:
 f = 12" maximum, 4" minimum (End of sign to center of nearest bracket)
 g = 12" maximum, 4" minimum (End of walkway grating to center of nearest support bracket)
 h = 6'-0" maximum (center to center of sign and/or walkway support brackets, WF(A-N)4x1.79 or WF(A-N)4x3.06)
 k = 2" maximum gap between adjacent walkway grating sections and handrail ends
 ** If walkway bracket at safety chain location is behind sign, add angle to bracket, see Alternate Safety Chain Attachment on Base Sheet OS-A-11.
 For Details T and W, Section B-B and Grating Splice Details see Base Sheet OS-A-10.
 For Handrail Details see Base Sheet OS-A-11.

Structure Number	Station	a	b	c	d	e	Walkway Grating and Handrail Lengths
6S0841055R099.4	624+25	N/A	N/A	N/A	N/A	N/A	37'-0"
6S0841072L104.2	65+00	N/A	N/A	N/A	N/A	N/A	56'-9"

Truss grating to facilitate inspection shall run full length (center to center of support frames) ±12" on overhead trusses. Cost of truss grating is included in "Overhead Sign Structure".

Walkway and Truss Grating width dimensions are nominal and may vary ±1/2" based on available standard widths.

OS-A-9 1-20-11

FILE NAME = S:\Sign Truss Plan Details\46196\46196Sign	USER NAME = k11eyjb	DESIGNED -	REVISED -
Rep1.dgn		DRAWN -	REVISED -
PLOT SCALE = 8,1888 Ft / in.		CHECKED -	REVISED -
PLOT DATE = Sep-20-2011 10:28:05AM		DATE -	REVISED -

STATE OF ILLINOIS
 DEPARTMENT OF TRANSPORTATION

OVERHEAD SIGN STRUCTURES	
ALUMINUM WALKWAY DETAILS	
SCALE: _____	SHEET NO. _____ OF _____ SHEETS STA. _____ TO STA. _____

F.A. RTE.	SECTION	COUNTY	TOTAL SHEETS	SHEET NO.
VAR	D-6_OVDOSINSTRBEE12-23	SANGAMON	33	13
CONTRACT NO. 46196			ILLINOIS FED. AID PROJECT	